

Suspend Tile

Tipo De Producto	Alfombra Modular
Colección	Canopy
Número De Estilo	5T391
Construcción	Patrón Con Bucle Multinivel
Método De Teñido	100% Solution Dyed
Base Primaria	Sintético
Base Secundaria	Base Ecoworx®
Tratamientos	SSP® Shaw Protección Para El Piso
Protectores	

	u.s.	metric
Tamaño Del Producto	9 in x 36 in	23 cm x 91 cm
Área Por Caja	45 ft²	4.18 m²
Piezas Por Caja	20 pcs	
Gauge	1/12 in	47.2 per 10 cm
Puntadas	9.0 per in	36.5 per 10 cm
Espesor De La Fibra Terminada	0.120 in	3.05 mm
Densidad Media	5700 oz/yd³	0.211 g/cm³
Espesor Total	0.252 in	6.4 mm
Peso De La Fibra	19 oz/yd²	644.2 g/m²



Método De Instalación Recomendado



Datos + Pruebas

Panel Radiante (Astm E648)	Class I
Nbs Humo	Less Than 450
Propensión Electrostática	Less Than 3.5 kv
Cri Green Label Plus (Glp)	GLP9968
Prueba De Pastillas (Pill)	Pass*
Ada Compliance	≥0.6, Cumple con las recomendaciones para el coeficiente de fricción estática para superficies transitables ADA y rutas accesibles***

Test Reports may be included or listed by the manufacturing/inventory style number as opposed to the noted selling style number.

Garantías

Vitalicio Limitado A USo Comercial

Productos Que Combinan

Carpet Tile: **Elevate Tile, Balcony Tile, Habitat Tile, Above Tile, Preserve Tile, Weathered Tile, Wildwood Tile, Weathered Color Tile**
Broadloom: **Ground, Below**

Atributos + Certificaciones

Certifications Below Apply Exclusively To The Carpet Tile Rug Itself And Not The Lokworx Tabs Adhesive

Health & Wellbeing

Material Ingredient Transparency

Cradle to Cradle Certified® | Silver Level (Version 4.0)
Health Product Declaration (HPD) | Divulgado 1,000 ppm
Living Building Challenge (LBC) | Libre De Químicos Red List
Declare | Compatible LBC
NSF 140 | Oro
CRI Green Label Plus (GLP) | GLP9968

Indoor Air Quality

Climate Impact

Environmental Product Declaration (EPD)

Certificado Tercerizado De Acuerdo Con La Norma ISO14044, ISO14025 & EN15804
3.73 kg CO₂/m²
Carbon Neutral
57% (Pre-Consumer 57% | Post-Consumer 0%)
100% Reciclable

Embodied Carbon (Cradle to Gate)

Life-Cycle Carbon Emissions

Total Recycled Content

Product Packaging

Global Product Assessment

Singapore Green Label | Certificado
CE Marking (EN 14041) | Certificado Tercerizado
Environmental Guarantee* | Re[turn] Reclamation Program* | Through Our Environmental Guarantee, Shaw Pledges to Transport And Recycle Any Ecoworx Carpet.
Country of Origin | Imported**

Well V2 Contribution Credit

X08 Hazardous Material Reduction Part 1: Limit Hazardous Materials Optimization – 1 pt

C2C Silver Level (Version 4.0)

X10 Volatile Compound Reduction Part 1 (A): Manage Volatile Organic Compounds (VOCs) Optimization – 1 pt

C2C Silver Level (Version 4.0)

X11 Long Term Emissions Control Part 2: Flooring Optimization – 1 pt

Green Label Plus Certification: GLP9968

X13 Enhanced Material Precaution Part 1: Select Optimized Materials Optimization – max 2 pts

C2C Silver Level (Version 4.0)

X14 Material Transparency Part 1: Promote Ingredient Disclosure Optimization – max 2 pts

C2C Silver Level (Version 4.0)

Contribución Para Créditos Leed

Crédito MR: Divulgación y optimización de productos de construcción
Declaraciones ambientales de productos - Opción 1: Declaración ambiental de productos (EPD)

Crédito MR: Divulgación y optimización de productos de construcción
Ingredientes de materiales - Opción 1: Informe de ingredientes de los materiales

Crédito MR: Divulgación y optimización de productos de construcción
Ingredientes de materiales - Opción 2: Optimización de ingredientes de los materiales

Crédito MR: Divulgación y optimización de productos de construcción
Abastecimiento de materias primas - Opción 2: Prácticas en liderazgo de extracción

Crédito EQ: Materiales de baja emisión
Opción 1: Cálculos de categoría de producto

MR Credit: Interiors Life-Cycle Impact Reduction
Option 3: Design for Flexibility

3rd Party Certified in Accordance with ISO 14044, ISO 14025 & EN15804

C2C Silver Level (Version 4.0) or HPD (Version 2.1)

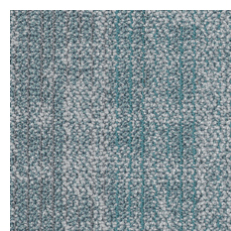
C2C Silver Level (Version 4.0)

Environmental Guarantee: Re[turn] Reclamation Program* | Through Our Environmental Guarantee, Shaw Pledges to Transport And Recycle Any Ecoworx® Carpet.

Green Label Plus Certification: GLP9968

Ecoworx® Tile with Lokdots Installation System

Available Colorways



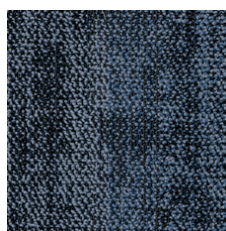
Rain 88327



Greenhouse 88396



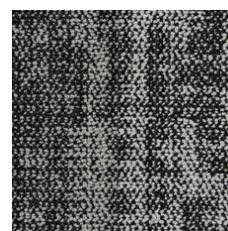
Still 88481



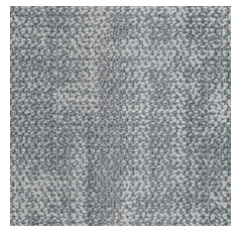
Deep Sky 88485



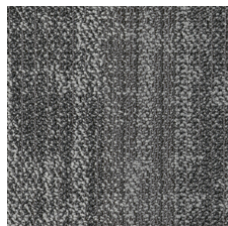
Shadow 88500



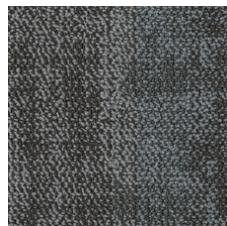
Moonlight 88501



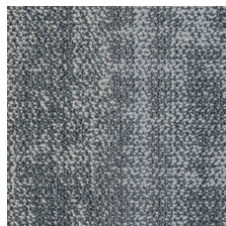
Quiet 88535



Path 88555



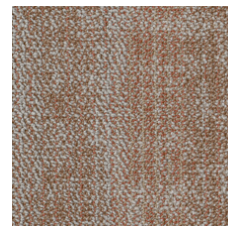
Shade 88557



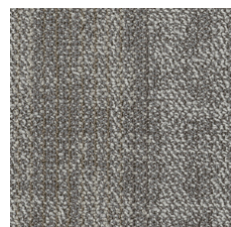
Calm 88595



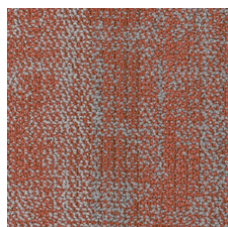
Filter 88596



Clay Pot 88675



Branch 88760



Flora 88865

Quick Ship 2 semanas: hasta 2,500 yardas cuadradas desde EE. UU.

Información Adicional

* To learn more about the recyclability of our products and our re[TURN], please visit shawcontract.com/sustainability.

**Meets or exceeds all local and national regulations in country of manufacture.

***This carpet is manufactured to be ADA compliant, but to be fully ADA compliant, the end-user must ensure the carpet is adhered to the floor and installed as outlined in the ADA standards.

[Installation Guidelines](#)

[Maintenance Guidelines](#)

Specifications are subject to nominal manufacturing variance. Material supply and/or manufacturing processes may necessitate changes without notice.

This product is an exclusive design and may not be duplicated in any manner. Use of this design in the creation of another product design is also strictly prohibited.

Visit shawcontract.com/testing for more information.



PVC-Free

Corporate Headquarters +1 800 257 7429 | +1 706 532 7984 | Atlanta +1 404 853 7429 | Bengaluru +91 80 6773 0202 | Beijing +86 10 6568 588 | Chicago +1 312 467 1331 | Dubai +971 4 584 6956 | Hong Kong +852 2623 0371 | London +44 207 961 4120 | Los Angeles +1 800 233 1614 | Melbourne +61 3 9939 8543 | Mexico City +55 5010 7600 | Mumbai +91 22 6284 5050 | Nantong +86 400 800 7429 | New York +1 212 953 7429 | Paris +33 (0) 1 81 22 44 39 | San Francisco +1 415 955 1920 | Shanghai +86 21 3338 4000 | Singapore +65 6733 1811 | Sydney +61 800 556 302

© 2025 Shaw Industries Group, Inc., a Berkshire Hathaway Company
April 3, 2025

4 of 4