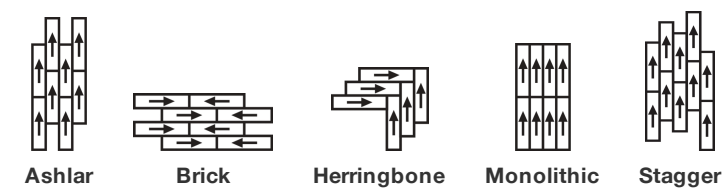


Habitat Tile

Tipo De Producto	Alfombra Modular	
Colección	Canopy	
Número De Estilo	5T390	
Construcción	Patrón Con Bucle Multinivel	
Método De Teñido	100% Solution Dyed	
Base Primaria	Sintético	
Base Secundaria	Base Ecoworx®	
Tratamientos Protectores	SSP® Shaw Protección Para El Piso	
Adhesivo Recomendado	5000 Carpet Tile 4 Gallon, 3000 Carpet Tile 4 Gallon, 3000 Carpet Tile 1 Gallon, 4151 Multi-Use Carpet Tile 4 Gallon, 5000 Carpet Tile 1 Gallon, LokWorx Adhesive Tabs, 3800 Indoor Outdoor Carpet Tile 4 Gallon or LokDots	
	u.s.	metric
Tamaño Del Producto	9 in x 36 in	23 cm x 91 cm
Área Por Caja	45 ft²	4.18 m²
Piezas Por Caja	20 pcs	
Gauge	1/12 in	47.2 per 10 cm
Puntadas	9.0 per in	36.5 per 10 cm
Espesor De La Fibra Terminada	0.118 in	3 mm
Densidad Media	5797 oz/yd³	0.214 g/cm³
Espesor Total	0.248 in	6.3 mm
Peso De La Fibra	19 oz/yd²	644.2 g/m²



Método De Instalación Recomendado



Datos + Pruebas

Panel Radiante (Astm E648)	Class I
Nbs Humo	Less Than 450
Propensión Electrostática	Less Than 3.5 kv
Cri Green Label Plus (Glp)	USA GLP9968 China GLP1263
Prueba De Pastillas (Pill)	Pass*
Ada Compliance	≥0.6, Cumple con las recomendaciones para el coeficiente de fricción estática para superficies transitables ADA y rutas accesibles***
Test Reports may be included or listed by the manufacturing/inventory style number as opposed to the noted selling style number.	

Productos Que Combinan

Carpet Tile: **Elevate Tile, Balcony Tile, Suspend Tile, Above Tile, Preserve Tile, Weathered Tile, Wildwood Tile, Weathered Color Tile**
Broadloom: **Ground, Below**

Atributos + Certificaciones

Certifications Below Apply Exclusively To The Carpet Tile Rug Itself And Not The Lokworx Tabs Adhesive

Health & Wellbeing

Material Ingredient Transparency	Cradle to Cradle Certified® Silver Level (Version 4.0) Health Product Declaration (HPD) Divulgado 1,000 ppm Living Building Challenge (LBC) Libre De Químicos Red List Declare Compatible LBC Declare Compatible LBC NSF 140 Oro
Indoor Air Quality	CRI Green Label Plus (GLP) GLP9968
Climate Impact	
Environmental Product Declaration (EPD)	Certificado Tercerizado De Acuerdo Con La Norma ISO14044, ISO14025 & EN15804
Embodied Carbon (Cradle to Gate)	3.73 kg CO₂/m²
Life-Cycle Carbon Emissions	Carbon Neutral
Total Recycled Content	57% (Pre-Consumer 57% Post-Consumer 0%)
Product Packaging	100% Recyclable
Global Product Assessment	Singapore Green Label Certificado CE Marking (EN 14041) Certificado Tercerizado Environmental Guarantee* Re[turn] Reclamation Program* Through Our Environmental Guarantee, Shaw Pledges to Transport And Recycle Any Ecoworx Carpet. Country of Origin** USA & China

Well V2 Contribution Credit

X08 Hazardous Material Reduction Part 1: Limit Hazardous Materials Optimization – 1 pt	C2C Silver Level (Version 4.0)
X10 Volatile Compound Reduction Part 1 (A): Manage Volatile Organic Compounds (VOCs) Optimization – 1 pt	C2C Silver Level (Version 4.0)
X11 Long Term Emissions Control Part 2: Flooring Optimization – 1 pt	Green Label Plus Certification: GLP9968
X13 Enhanced Material Precaution Part 1: Select Optimized Materials Optimization – max 2 pts	C2C Silver Level (Version 4.0)
X14 Material Transparency Part 1: Promote Ingredient Disclosure Optimization – max 2 pts	C2C Silver Level (Version 4.0)

Contribución Para Créditos Leed

Crédito MR: Divulgación y optimización de productos de construcción
Declaraciones ambientales de productos - Opción 1: Declaración ambiental de productos (EPD)

Crédito MR: Divulgación y optimización de productos de construcción
Ingredientes de materiales - Opción 1: Informe de ingredientes de los materiales

Crédito MR: Divulgación y optimización de productos de construcción
Ingredientes de materiales - Opción 2: Optimización de ingredientes de los materiales

Crédito MR: Divulgación y optimización de productos de construcción
Abastecimiento de materias primas - Opción 2: Prácticas en liderazgo de extracción

Crédito EQ: Materiales de baja emisión
Opción 1: Cálculos de categoría de producto

MR Credit: Interiors Life-Cycle Impact Reduction
Option 3: Design for Flexibility

3rd Party Certified in Accordance with ISO 14044, ISO 14025 & EN15804

C2C Silver Level (Version 4.0) or HPD (Version 2.1)

C2C Silver Level (Version 4.0)

Environmental Guarantee: Re[turn] Reclamation Program* | Through Our Environmental Guarantee, Shaw Pledges to Transport And Recycle Any Ecoworx® Carpet.

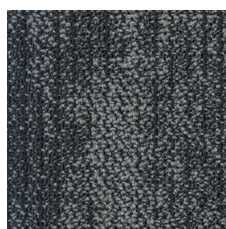
Green Label Plus Certification: GLP9968

Ecoworx® Tile with Lokdots Installation System

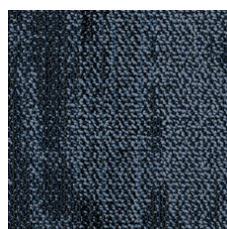
Available Colorways



Greenhouse 88396



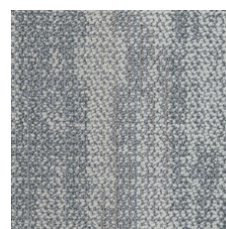
Still 88481



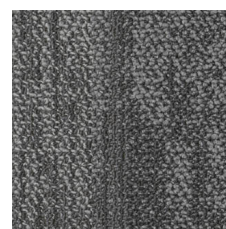
Deep Sky 88485



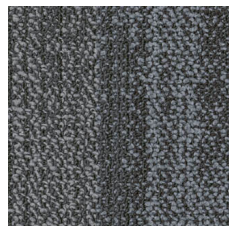
Shadow 88500



Quiet 88535



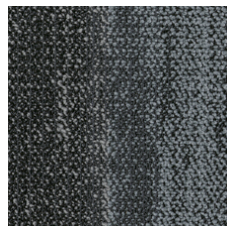
Path 88555



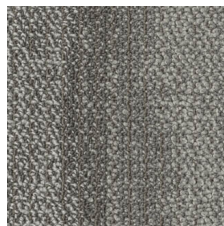
Shade 88557



Calm 88595



Filter 88596



Branch 88760

 **Quick Ship** 2 semanas: hasta 2,500 yardas cuadradas desde EE. UU.

Información Adicional

* To learn more about the recyclability of our products and our re[TURN], please visit shawcontract.com/sustainability.

**Meets or exceeds all local and national regulations in country of manufacture.

***This carpet is manufactured to be ADA compliant, but to be fully ADA compliant, the end-user must ensure the carpet is adhered to the floor and installed as outlined in the ADA standards.

[Installation Guidelines](#)

[Maintenance Guidelines](#)

Specifications are subject to nominal manufacturing variance. Material supply and/or manufacturing processes may necessitate changes without notice.

This product is an exclusive design and may not be duplicated in any manner. Use of this design in the creation of another product design is also strictly prohibited.

Visit shawcontract.com/testing for more information.

