

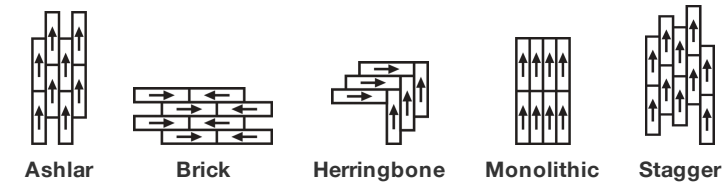
Above Tile

Tipo De Producto	Alfombra Modular
Colección	Canopy
Número De Estilo	5T392
Construcción	Patrón Con Bucle Multinivel
Método De Teñido	100% Solution Dyed
Base Primaria	Sintético
Base Secundaria	Base Ecoworx®
Tratamientos	SSP® Shaw Protección Para El Piso
Protectores	

	u.s.	metric
Tamaño Del Producto	9 in x 36 in	23 cm x 91 cm
Área Por Caja	45 ft²	4.18 m²
Piezas Por Caja	20 pcs	
Gauge	1/12 in	47.2 per 10 cm
Puntadas	9.0 per in	36.5 per 10 cm
Espesor De La Fibra Terminada	0.108 in	2.74 mm
Densidad Media	6333 oz/yd³	0.234 g/cm³
Espesor Total	0.257 in	6.53 mm
Peso De La Fibra	19 oz/yd²	644.2 g/m²



Método De Instalación Recomendado



Datos + Pruebas

Panel Radiante (Astm E648)	Class I
Nbs Humo	Less Than 450
Propensión Electrostática	Less Than 3.5 kv
Cri Green Label Plus (Glp)	USA GLP9968   China GLP1263
Prueba De Pastillas (Pill)	Pass*
Ada Compliance	≥0.6, Cumple con las recomendaciones para el coeficiente de fricción estática para superficies transitables ADA y rutas accesibles***

Test Reports may be included or listed by the manufacturing/inventory style number as opposed to the noted selling style number.

Productos Que Combinan

Carpet Tile: **Elevate Tile, Balcony Tile, Habitat Tile, Suspend Tile, Preserve Tile, Weathered Tile, Wildwood Tile, Weathered Color Tile**  
Broadloom: **Ground, Below**

Atributos + Certificaciones

Certifications Below Apply Exclusively To The Carpet Tile Rug Itself And Not The Lokworx Tabs Adhesive

Health & Wellbeing

Material Ingredient Transparency	<b>Cradle to Cradle Certified®   Silver Level (Version 4.0)</b> <b>Health Product Declaration (HPD)   Divulgado 1,000 ppm</b> <b>Living Building Challenge (LBC)   Libre De Químicos Red List Declare   Compatible LBC</b> <b>Declare   Compatible LBC</b> <b>NSF 140   Oro</b> <b>CRI Green Label Plus (GLP)   GLP9968</b>
Indoor Air Quality	
Climate Impact	
Environmental Product Declaration (EPD)	<b>Certificado Tercerizado De Acuerdo Con La Norma ISO14044, ISO14025 &amp; EN15804</b> <b>3.73 kg CO<sub>2</sub>/m<sup>2</sup></b> <b>Carbon Neutral</b> <b>57% (Pre-Consumer 57%   Post-Consumer 0%)</b> <b>100% Recyclable</b>
Embodied Carbon (Cradle to Gate)	
Life-Cycle Carbon Emissions	
Total Recycled Content	
Product Packaging	
Global Product Assessment	<b>Singapore Green Label   Certificado</b> <b>CE Marking (EN 14041)   Certificado Tercerizado</b> <b>Environmental Guarantee*   Re[turn] Reclamation Program*   Through Our Environmental Guarantee, Shaw Pledges to Transport And Recycle Any Ecoworx Carpet.</b> <b>Country of Origin**   USA &amp; China</b>

Well V2 Contribution Credit

X08 Hazardous Material Reduction Part 1: Limit Hazardous Materials Optimization – 1 pt	<b>C2C Silver Level (Version 4.0)</b>
X10 Volatile Compound Reduction Part 1 (A): Manage Volatile Organic Compounds (VOCs) Optimization – 1 pt	<b>C2C Silver Level (Version 4.0)</b>
X11 Long Term Emissions Control Part 2: Flooring Optimization – 1 pt	<b>Green Label Plus Certification: GLP9968</b>
X13 Enhanced Material Precaution Part 1: Select Optimized Materials Optimization – max 2 pts	<b>C2C Silver Level (Version 4.0)</b>
X14 Material Transparency Part 1: Promote Ingredient Disclosure Optimization – max 2 pts	<b>C2C Silver Level (Version 4.0)</b>

## Contribución Para Créditos Leed

Crédito MR: Divulgación y optimización de productos de construcción  
Declaraciones ambientales de productos - Opción 1: Declaración ambiental de productos (EPD)

Crédito MR: Divulgación y optimización de productos de construcción  
Ingredientes de materiales - Opción 1: Informe de ingredientes de los materiales

Crédito MR: Divulgación y optimización de productos de construcción  
Ingredientes de materiales - Opción 2: Optimización de ingredientes de los materiales

Crédito MR: Divulgación y optimización de productos de construcción  
Abastecimiento de materias primas - Opción 2: Prácticas en liderazgo de extracción

Crédito EQ: Materiales de baja emisión  
Opción 1: Cálculos de categoría de producto

MR Credit: Interiors Life-Cycle Impact Reduction  
Option 3: Design for Flexibility

**3rd Party Certified in Accordance with ISO 14044, ISO 14025 & EN15804**

**C2C Silver Level (Version 4.0) or HPD (Version 2.1)**

**C2C Silver Level (Version 4.0)**

**Environmental Guarantee: Re[turn] Reclamation Program\* | Through Our Environmental Guarantee, Shaw Pledges to Transport And Recycle Any Ecoworx® Carpet.**

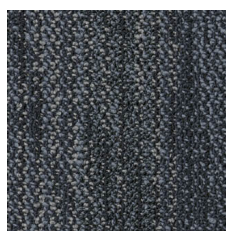
**Green Label Plus Certification: GLP9968**

**Ecoworx® Tile with Lokdots Installation System**

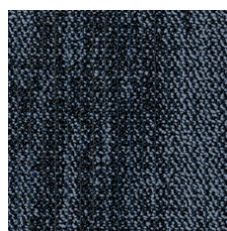
## Available Colorways



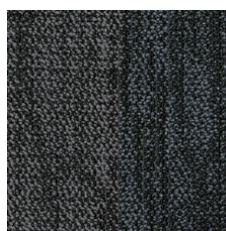
Greenhouse 88396



Still 88481



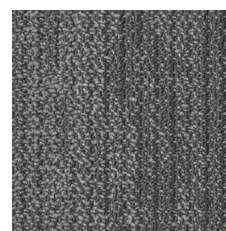
Deep Sky 88485



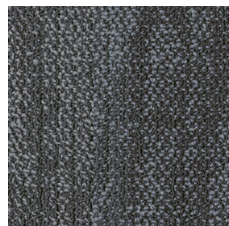
Shadow 88500



Quiet 88535



Path 88555



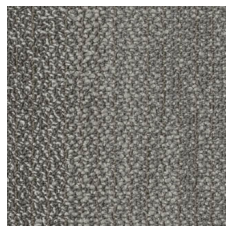
Shade 88557



Calm 88595



Filter 88596



Branch 88760

## Información Adicional

\* To learn more about the recyclability of our products and our re[TURN], please visit [shawcontract.com/sustainability](https://shawcontract.com/sustainability).

\*\*Meets or exceeds all local and national regulations in country of manufacture.

\*\*\*This carpet is manufactured to be ADA compliant, but to be fully ADA compliant, the end-user must ensure the carpet is adhered to the floor and installed as outlined in the ADA standards.

[Installation Guidelines](#)

[Maintenance Guidelines](#)

Specifications are subject to nominal manufacturing variance. Material supply and/or manufacturing processes may necessitate changes without notice.

This product is an exclusive design and may not be duplicated in any manner. Use of this design in the creation of another product design is also strictly prohibited.

Visit [shawcontract.com/testing](https://shawcontract.com/testing) for more information.

