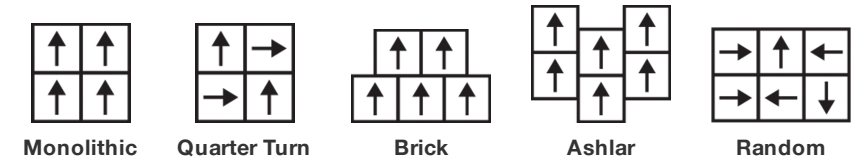


Balcony Tile

产品类别	Carpet Tile	
系列	Canopy	
款型编号	5T389	
结构	高低圈绒	
染色方式	100% 原液染色	
第一层底背	合成的	
第二层底背	Ecoworx®块毯	
防护处理	SSP®萧氏污渍防护成分	
胶粘剂建议	LokDots, 3000 Carpet Tile 4 Gallon, 3000 Carpet Tile 1 Gallon, 4151 Multi-Use Carpet Tile 4 Gallon, 5000 Carpet Tile 1 Gallon, LokWorx Adhesive Tabs, 3800 Indoor Outdoor Carpet Tile 4 Gallon or 5000 Carpet Tile 4 Gallon	
	u.s.	metric
产品尺寸	24 in x 24 in	61 cm x 61 cm
每箱面积	48 ft²	4.46 m²
每盒件数	12 pcs	
隔距	1/12 in	47.2 per 10 cm
针数	8.5 per in	34.5 per 10 cm
成品簇绒厚度	0.103 in	2.62 mm
平均密度	5942 oz/yd³	0.22 g/cm³
总厚度	0.238 in	6.05 mm
簇绒重量	17 oz/yd²	576.4 g/m²



铺装建议



数据 + 测试

辐射板 (astm E648)	Class I
Nbs烟雾	Less Than 450
静电倾向	Less Than 3.5 kv
Cri绿色标签 (glp)	USA GLP9968 China GLP1263
药物测试	Pass*
Ada标准	≥0.5, 符合ADA建议的地面和走廊静摩擦系数***

Test Reports may be included or listed by the manufacturing/inventory style number as opposed to the noted selling style number.

搭配产品

Carpet Tile: **Elevate Tile, Habitat Tile, Suspend Tile, Above Tile, Preserve Tile, Weathered Tile, Wildwood Tile, Weathered Color Tile**

属性+认证

Certifications Below Apply Exclusively To The Carpet Tile Rug Itself And Not The Lokworx Tabs Adhesive

Health & Wellbeing

Material Ingredient Transparency

Cradle to Cradle Certified® | Silver Level (Version 4.0)
Health Product Declaration (HPD) | 1,000 ppm披露
Living Building Challenge (LBC) | 不含红榜化学限制制品
Declare | 符合LBC标准
Declare | 符合LBC标准
NSF 140 | 金
CRI Green Label Plus (GLP) | GLP9968

Indoor Air Quality

Climate Impact

Environmental Product Declaration (EPD)

通过**ISO14044**、**ISO14025**和**EN15804**等第三方认证

Embodied Carbon (Cradle to Gate)

3.69 kg CO₂/m²

Life-Cycle Carbon Emissions

Carbon Neutral

Total Recycled Content

56% (Pre-Consumer 56% | Post-Consumer 0%)

Product Packaging

100%可回收

Global Product Assessment

Singapore Green Label | 认证
CE Marking (EN 14041) | 第三方认证
Environmental Guarantee* | Re[turn] Reclamation Program* | Through Our Environmental Guarantee, Shaw Pledges to Transport And Recycle Any Ecoworx Carpet.
Country of Origin | USA & China**

Well V2 Contribution Credit

X08 Hazardous Material Reduction Part 1: Limit Hazardous Materials Optimization – 1 pt

C2C Silver Level (Version 4.0)

X10 Volatile Compound Reduction Part 1 (A): Manage Volatile Organic Compounds (VOCs) Optimization – 1 pt

C2C Silver Level (Version 4.0)

X11 Long Term Emissions Control Part 2: Flooring Optimization – 1 pt

Green Label Plus Certification: GLP9968

X13 Enhanced Material Precaution Part 1: Select Optimized Materials Optimization – max 2 pts

C2C Silver Level (Version 4.0)

X14 Material Transparency Part 1: Promote Ingredient Disclosure Optimization – max 2 pts

C2C Silver Level (Version 4.0)

绿色leed贡献信用

MR Credit：建立产品披露和优化
环境产品声明-选项1：环境产品声明（EPD）

3rd Party Certified in Accordance with ISO14044, ISO14025 & EN15804

MR Credit：建立产品披露与优化
材料成分-选项1：材料成分报告

C2C Silver Level (Version 4.0) or HPD (Version 2.1)

MR Credit：建立产品披露与优化
材料成分-选项2：材料成分优化

C2C Silver Level (Version 4.0)

MR Credit：建立产品披露与优化
原材料采购-选项2：领导力提取实践

Environmental Guarantee: Re[turn] Reclamation Program* | Through Our Environmental Guarantee, Shaw Pledges to Transport And Recycle Any Ecoworx® Carpet.

Green Label Plus Certification: GLP9968

EQ信用：低排放材料
选项1：产品类别计算

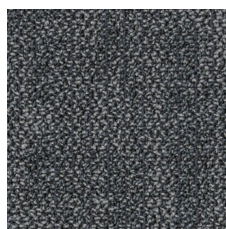
MR Credit: Interiors Life-Cycle Impact Reduction
Option 3: Design for Flexibility

Ecworx® Tile with Lokdots Installation System

Available Colorways



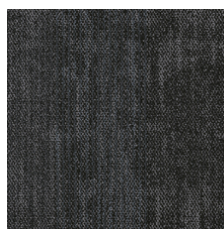
Greenhouse 88396



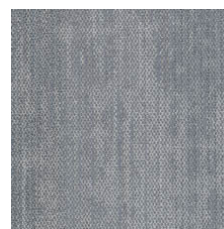
Still 88481



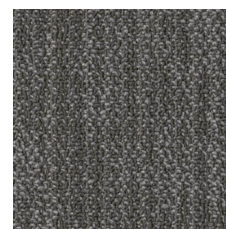
Deep Sky 88485



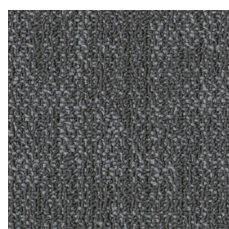
Shadow 88500



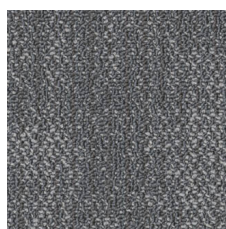
Quiet 88535



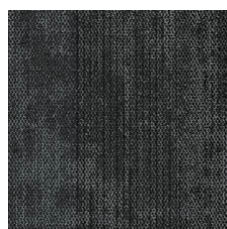
Path 88555



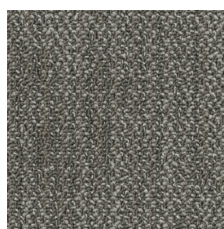
Shade 88557



Calm 88595



Filter 88596



Branch 88760

附加信息

* To learn more about the recyclability of our products and our re[TURN], please visit shawcontract.com/sustainability.

**Meets or exceeds all local and national regulations in country of manufacture.

***This carpet is manufactured to be ADA compliant, but to be fully ADA compliant, the end-user must ensure the carpet is adhered to the floor and installed as outlined in the ADA standards.

[Installation Guidelines](#)

[Maintenance Guidelines](#)

Specifications are subject to nominal manufacturing variance. Material supply and/or manufacturing processes may necessitate changes without notice.

This product is an exclusive design and may not be duplicated in any manner. Use of this design in the creation of another product design is also strictly prohibited.

Visit shawcontract.com/testing for more information.



PVC-Free

Corporate Headquarters +1 800 257 7429 | +1 706 532 7984 | Atlanta +1 404 853 7429 | Bengaluru +91 80 6773 0202 | Beijing +86 10 6568 588 | Chicago +1 312 467 1331 | Dubai +971 4 584 6956 | Hong Kong +852 2623 0371 | London +44 207 961 4120 | Los Angeles +1 800 233 1614 | Melbourne +61 3 9939 8543 | Mexico City +55 5010 7600 | Mumbai +91 22 6284 5050 | Nantong +86 400 800 7429 | New York +1 212 953 7429 | Paris +33 (0) 1 81 22 44 39 | San Francisco +1 415 955 1920 | Shanghai +86 21 3338 4000 | Singapore +65 6733 1811 | Sydney +61 800 556 302

© 2025 Shaw Industries Group, Inc., a Berkshire Hathaway Company
July 17, 2025

3 of 3