

Turn Tile

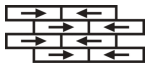
상품 유형	Carpet Tile	
수집	Active	
스타일 번호	5T205	
구성	다중 레벨 루프식	
염료 방법	100% 원착 염색	
기본 백업	합성	
보조 백업	Ecoworx® 타일	
보호 처리	SSP® Shaw 흠먼지 보호	
권장 접착제	LokDots, 3000 Carpet Tile 4 Gallon, 3000 Carpet Tile 1 Gallon, 4151 Multi-Use Carpet Tile 4 Gallon, 5000 Carpet Tile 1 Gallon, LokWorx Adhesive Tabs, 3800 Indoor Outdoor Carpet Tile 4 Gallon or 5000 Carpet Tile 4 Gallon	
	u.s.	metric
제품 크기	12 in x 48 in	30 cm x 122 cm
상자 당 면적	48 ft ²	4.46 m ²
상자 당 조각	12 pcs	
계량기	1/12 in	47.2 per 10 cm
스티치	9.5 per in	37.0 per 10 cm
완성 된 말뚝 두께	0.101 in	2.57 mm
평균 밀도	7129 oz/yd ³	0.264 g/cm ³
킬로 텍스		10.4
총 두께	0.247 in	6.27 mm
슬을다는 무게	20 oz/yd ²	678.1 g/m ²



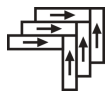
권장 설치 방법



Ashlar



Brick



Herringbone



Monolithic



Stagger

데이터 + 테스트

복사 패널 (Astm E648)

Class I

Nbs 연기

Less Than 450

정전기 성향

Less Than 3.5 kv

Cri 그린 라벨 플러스 (Glp)

GLP9968

알약 테스트

Pass*

Ada 준수

0.6 이상, ADA 보행 노면과 이용 가능한 경로의 권장 마찰계수 충족***

Test Reports may be included or listed by the manufacturing/inventory style number as opposed to the noted selling style number.

보증

중신 상용 제한

코디네이팅 제품

Carpet Tile: **Advance Tile, Dash Tile, Track Tile**

속성 + 인증

Certifications Below Apply Exclusively To The Carpet Tile Rug Itself And Not The Lokworx Tabs Adhesive

Health & Wellbeing

Material Ingredient Transparency

Cradle to Cradle Certified® | Silver Level (Version 4.0)
Health Product Declaration (HPD) | 1,000ppm 노출
Living Building Challenge (LBC) | 적색목록 화학물질 없음
Declare | LBC 규격
NSF 140 | 골드

Indoor Air Quality

CRI Green Label Plus (GLP) | GLP9968

Climate Impact

Environmental Product Declaration (EPD)

ISO 14044, ISO 14025 및 EN15804에 따라 타사 인증 획득

Embodied Carbon (Cradle to Gate)

3.75 kg CO₂/m²

Life-Cycle Carbon Emissions

Carbon Neutral

Total Recycled Content

57% (Pre-Consumer 57% | Post-Consumer 0%)

Product Packaging

100% 재활용 가능

Global Product Assessment

Singapore Green Label | 인증**CE Marking (EN 14041) | 타사 인증 획득**

Environmental Guarantee* | Re[turn] Reclamation Program* | Through
Our Environmental Guarantee, Shaw Pledges to Transport And
Recycle Any Ecoworx Carpet.

Country of Origin | Imported**

Well V2 Contribution Credit

X08 Hazardous Material Reduction Part 1: Limit Hazardous Materials Optimization – 1 pt

C2C Silver Level (Version 4.0)

X10 Volatile Compound Reduction Part 1 (A): Manage Volatile Organic Compounds (VOCs) Optimization – 1 pt

C2C Silver Level (Version 4.0)

X11 Long Term Emissions Control Part 2: Flooring Optimization – 1 pt

Green Label Plus Certification: GLP9968

X13 Enhanced Material Precaution Part 1: Select Optimized Materials Optimization – max 2 pts

C2C Silver Level (Version 4.0)

X14 Material Transparency Part 1: Promote Ingredient Disclosure Optimization – max 2 pts

C2C Silver Level (Version 4.0)

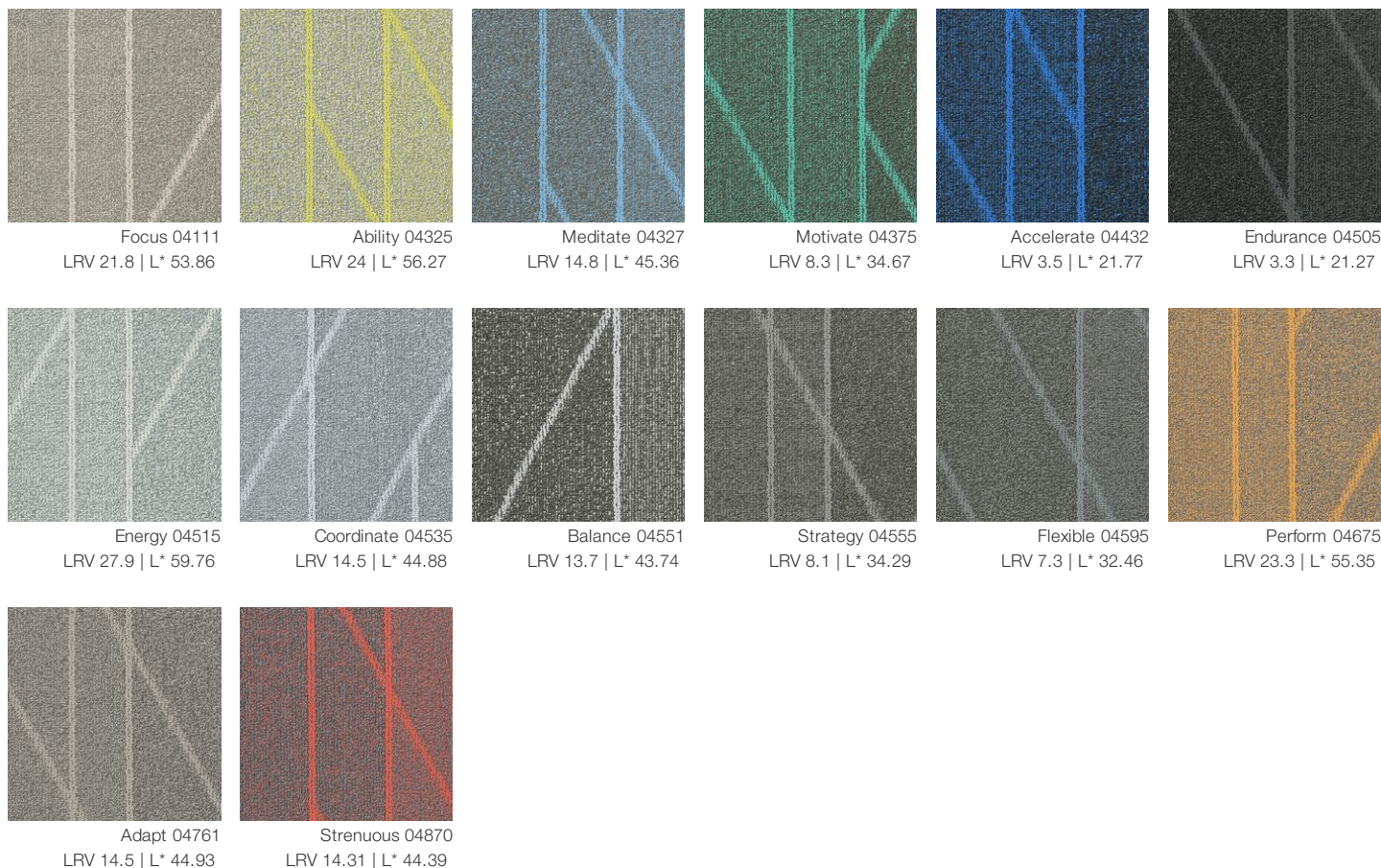
녹색의 공헌 기여 크레딧

MR 크레딧 : 제품 공개 및 최적화 구축
환경 제품 선언-옵션 1 : 환경 제품 선언 (EPD)**3rd Party Certified in Accordance with ISO14044, ISO14025 & EN15804**MR 크레딧 : 제품 공개 및 최적화 구축
재료 성분-옵션 1 : 재료 성분보고**C2C Silver Level (Version 4.0) or HPD (Version 2.1)**MR 크레딧 : 제품 공개 및 최적화 구축
재료 성분-옵션 2 : 재료 성분 최적화**C2C Silver Level (Version 4.0)**MR 크레딧 : 제품 공개 및 최적화 구축
원료 소싱-옵션 2 : 리더십 추출 사례

Environmental Guarantee: Re[turn] Reclamation Program* | Through
Our Environmental Guarantee, Shaw Pledges to Transport And
Recycle Any Ecoworx® Carpet.

Green Label Plus Certification: GLP9968EQ 크레딧 : 저 발광 재료
옵션 1 : 제품 범주 계산**Green Label Plus Certification: GLP9968**MR Credit: Interiors Life-Cycle Impact Reduction
Option 3: Design for Flexibility**Green Label Plus Certification: GLP9968**

Available Colorways



추가 정보

* To learn more about the recyclability of our products and our re[TURN], please visit shawcontract.com/sustainability.

**Meets or exceeds all local and national regulations in country of manufacture.

***This carpet is manufactured to be ADA compliant, but to be fully ADA compliant, the end-user must ensure the carpet is adhered to the floor and installed as outlined in the ADA standards.

[Installation Guidelines](#)

[Maintenance Guidelines](#)

Specifications are subject to nominal manufacturing variance. Material supply and/or manufacturing processes may necessitate changes without notice.

This product is an exclusive design and may not be duplicated in any manner. Use of this design in the creation of another product design is also strictly prohibited.

Visit shawcontract.com/testing for more information.



PVC-Free

Corporate Headquarters +1 800 257 7429 | +1 706 532 7984 | Atlanta +1 404 853 7429 | Bengaluru +91 80 6773 0202 | Beijing +86 10 6568 588 | Chicago +1 312 467 1331 | Dubai +971 4 584 6956 | Hong Kong +852 2623 0371 | London +44 207 961 4120 | Los Angeles +1 800 233 1614 | Melbourne +61 3 9939 8543 | Mexico City +55 5010 7600 | Mumbai +91 22 6284 5050 | Nantong +86 400 800 7429 | New York +1 212 953 7429 | Paris +33 (0) 1 81 22 44 39 | San Francisco +1 415 955 1920 | Shanghai +86 21 3338 4000 | Singapore +65 6733 1811 | Sydney +61 800 556 302

© 2025 Shaw Industries Group, Inc., a Berkshire Hathaway Company
July 1, 2025

3 of 3