

## Dwelling Tile

製品型	<b>Carpet Tile</b>	
コレクション	<b>Haven</b>	
スタイルナンバー	<b>5T239</b>	
建設	マルチレベルパターンループ	
染色法	100% 原液着色	
一次バックイング	合成	
二次バックイング	Ecoworx®タイル	
保護治療	SSP@shaw 土壌保護保証	
推奨接着剤	LokWorx Adhesive Tabs, 3800 Indoor Outdoor Carpet Tile 4 Gallon, 5000 Carpet Tile 4 Gallon, LokDots, 3000 Carpet Tile 4 Gallon, 3000 Carpet Tile 1 Gallon, 4151 Multi-Use Carpet Tile 4 Gallon or 5000 Carpet Tile 1 Gallon	
	u.s.	metric
商品のサイズ	9 in x 36 in	23 cm x 91 cm
ボックスあたりの面積	45 ft <sup>2</sup>	4.18 m <sup>2</sup>
ボックスあたりの個数	20 pcs	
ゲージ	1/12 in	47.2 per 10 cm
ステッチ	8.0 per in	32.0 per 10 cm
完成した杭の厚さ	0.122 in	3.1 mm
平均密度	6492 oz/yd <sup>3</sup>	0.24 g/cm <sup>3</sup>
キロテックス		11.54
総厚	0.279 in	7.09 mm
房状の重量	22 oz/yd <sup>2</sup>	745.9 g/m <sup>2</sup>



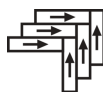
## 推奨インストール方法



Ashlar



Brick



Herringbone



Monolithic



Stagger

## データ + テスト

放射パネル (astm E648)

Nbs煙

静電気の傾向

Cri Green Label Plus (glp)

錠剤テスト

Adaコンプライアンス

Class I

Less Than 450

Less Than 3.5 kv

USA GLP9968 | China GLP1263

Pass\*

&gt;0.6、ADA 歩行面およびアクセス可能ルート用推奨静摩擦係数の基準に合致\*\*\*

Test Reports may be included or listed by the manufacturing/inventory style number as opposed to the noted selling style number.

## 保証

生涯商用限定保証

コーディネート商品

Carpet Tile: **Familiar Tile, Honest Tile, Identity Tile, Nest Tile, Shelter Tile**

属性+認定

Certifications Below Apply Exclusively To The Carpet Tile Rug Itself And Not The Lokworx Tabs Adhesive

Health & Wellbeing

Material Ingredient Transparency

**Cradle to Cradle Certified® | Silver Level (Version 4.0)**  
**Health Product Declaration (HPD) | 1,000 ppm 開示**  
**Living Building Challenge (LBC) | レッドリスト記載化学物質無配合**  
**Declare | LBC 準拠**  
**Declare | LBC 準拠**  
**NSF 140 | ゴールド**

Indoor Air Quality

**CRI Green Label Plus (GLP) | GLP9968**

Climate Impact

Environmental Product Declaration (EPD)

**ISO14044、ISO14025 および EN15804 に基づく 第三者認証取得**

Embodied Carbon (Cradle to Gate)

**3.79 kg CO<sub>2</sub>/m<sup>2</sup>**

Life-Cycle Carbon Emissions

**Carbon Neutral**

Total Recycled Content

**58% (Pre-Consumer 58% | Post-Consumer 0%)**

Product Packaging

**100% リサイクル可能**

Global Product Assessment

**Singapore Green Label | 認証取得**

**CE Marking (EN 14041) | 第三者認証取得**

**Environmental Guarantee\* | Re[turn] Reclamation Program\* | Through Our Environmental Guarantee, Shaw Pledges to Transport And Recycle Any Ecoworx Carpet.**

**Country of Origin\*\* | USA & China**

Well V2 Contribution Credit

X08 Hazardous Material Reduction Part 1: Limit Hazardous Materials Optimization – 1 pt

**C2C Silver Level (Version 4.0)**

X10 Volatile Compound Reduction Part 1 (A): Manage Volatile Organic Compounds (VOCs) Optimization – 1 pt

**C2C Silver Level (Version 4.0)**

X11 Long Term Emissions Control Part 2: Flooring Optimization – 1 pt

**Green Label Plus Certification: GLP9968**

X13 Enhanced Material Precaution Part 1: Select Optimized Materials Optimization – max 2 pts

**C2C Silver Level (Version 4.0)**

X14 Material Transparency Part 1: Promote Ingredient Disclosure Optimization – max 2 pts

**C2C Silver Level (Version 4.0)**

グリーンリード貢献クレジット

MRクレジット：製品の開示と最適化の構築  
環境製品宣言-オプション1：環境製品宣言（EPD）

**3rd Party Certified in Accordance with ISO14044, ISO14025 & EN15804**

MRクレジット：製品の開示と最適化の構築  
材料成分-オプション1：材料成分レポート

**C2C Silver Level (Version 4.0) or HPD (Version 2.1)**

MRクレジット：製品の開示と最適化の構築  
材料成分-オプション2：材料成分の最適化

**C2C Silver Level (Version 4.0)**

MRクレジット：製品の開示と最適化の構築  
原材料の調達-オプション2：リーダーシップの抽出実践

**Environmental Guarantee: Re[turn] Reclamation Program\* | Through Our Environmental Guarantee, Shaw Pledges to Transport And Recycle Any Ecoworx® Carpet.**

EQクレジット：低排出材料  
オプション1：製品カテゴリの計算

**Green Label Plus Certification: GLP9968**

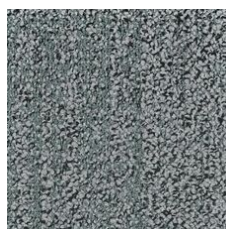
MR Credit: Interiors Life-Cycle Impact Reduction  
Option 3: Design for Flexibility

**Ecoworx® Tile with Lokdots Installation System**

## Available Colorways



Golden 38210  
LRV 19.5 | L\* 51.28



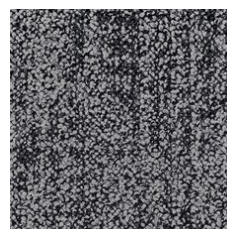
Mint 38327  
LRV 17.6 | L\* 48.96



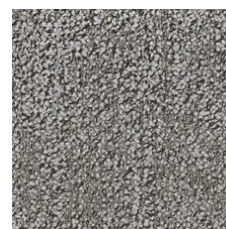
Ivy 38375  
LRV 17.1 | L\* 48.35



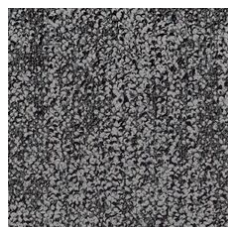
Overdye 38496  
LRV 15.9 | L\* 46.8



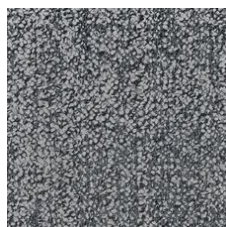
Raven 38505  
LRV 15.5 | L\* 46.35



Greige 38516  
LRV 23.5 | L\* 55.63



Fog 38518  
LRV 16 | L\* 47.02



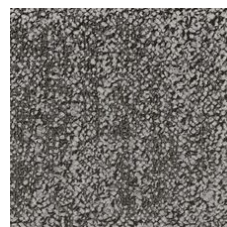
Rainstorm 38535  
LRV 19.9 | L\* 51.75



Espresso 38585  
LRV 13 | L\* 42.82



Apricot 38675  
LRV 18.2 | L\* 49.77



Truffle 38760  
LRV 21.3 | L\* 53.26



Rosewood 38870  
LRV 18 | L\* 49.48

## 追加情報

\* To learn more about the recyclability of our products and our re[TURN], please visit [shawcontract.com/sustainability](https://shawcontract.com/sustainability).

\*\*Meets or exceeds all local and national regulations in country of manufacture.

\*\*\*This carpet is manufactured to be ADA compliant, but to be fully ADA compliant, the end-user must ensure the carpet is adhered to the floor and installed as outlined in the ADA standards.

[Installation Guidelines](#)

[Maintenance Guidelines](#)

Specifications are subject to nominal manufacturing variance. Material supply and/or manufacturing processes may necessitate changes without notice.

This product is an exclusive design and may not be duplicated in any manner. Use of this design in the creation of another product design is also strictly prohibited.

Visit [shawcontract.com/testing](https://shawcontract.com/testing) for more information.



**PVC-Free**