

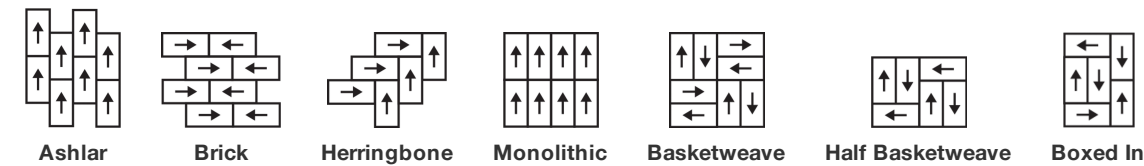
Textile Tile

Product Type	Carpet Tile
Collection	Suited
Style Number	5T279
Construction	Multi-Level Pattern/Cut Loop
Dye Method	100% Solution Dyed
Primary Backing	Synthetic
Secondary Backing	Ecoworx® Tile
Protective Treatments	SSP® Shaw Soil Protection
Recommended Adhesive	LokDots, 3000 Carpet Tile 4 Gallon, 3000 Carpet Tile 1 Gallon, 4151 Multi-Use Carpet Tile 4 Gallon, 5000 Carpet Tile 1 Gallon, LokWorx Adhesive Tabs, 3800 Indoor Outdoor Carpet Tile 4 Gallon or 5000 Carpet Tile 4 Gallon

	u.s.	metric
Product Size	18 in x 36 in	46 cm x 91 cm
Area Per Carton	45 ft²	4.18 m²
Pieces Per Carton	10 pcs	
Gauge	1/10 in	39.4 per 10 cm
Stitches	8.5 per in	34.5 per 10 cm
Finished Pile Thickness	0.124 in	3.15 mm
Average Density	8129 oz/yd³	0.301 g/cm³
Kilotex		8.12
Total Thickness	0.327 in	8.31 mm
Tufted Weight	28 oz/yd²	949.4 g/m²



Recommended Installation Method



Data + Testing

Radiant Panel	Class I
Nbs Smoke	Less Than 450
Electrostatic Propensity	Less Than 3.5 kv
Cri Green Label Plus (Glp)	USA GLP9968 China GLP1263
Pill Test	Pass*
Ada Compliance	>0.6, Meets the recommended static coefficient of friction for ADA walking surfaces and accessible routes***

Test Reports may be included or listed by the manufacturing/inventory style number as opposed to the noted selling style number.

Warranties

Lifetime Commercial Limited

Coordinating Products

Carpet Tile: **Jacquard Tile, Check Tile, Houndstooth Tile**
Broadloom: **Textile**

Material Health & Environmental Certifications

Certifications Below Apply Exclusively To The Carpet Tile Rug Itself And Not The Lokworx Tabs Adhesive

Health & Wellbeing

Material Ingredient Transparency

Cradle to Cradle Certified® | Silver Level (Version 4.0)
Health Product Declaration (HPD) | 1,000 ppm Disclosure
Living Building Challenge (LBC) | Free of Red List Chemicals
Declare | LBC Compliant
Declare | LBC Compliant
NSF 140 | Gold
CRI Green Label Plus (GLP) | GLP9968

Indoor Air Quality

Climate Impact

Environmental Product Declaration (EPD)
Embodied Carbon (Cradle to Gate)
Life-Cycle Carbon Emissions
Total Recycled Content
Product Packaging

3rd Party Certified in Accordance with ISO14044, ISO14025 & EN15804
3.91 kg CO₂/m²
Carbon Neutral
61% (Pre-Consumer 61% | Post-Consumer 0%)
100% Recyclable

Global Product Assessment

Singapore Green Label | Certified
CE Marking (EN 14041) | 3rd Party Certified
Environmental Guarantee* | Re[turn] Reclamation Program* | Through Our Environmental Guarantee, Shaw Pledges to Transport And Recycle Any Ecoworx Carpet.
Country of Origin | USA & China**

Well V2 Contribution Credit

X08 Hazardous Material Reduction Part 1: Limit Hazardous Materials Optimization – 1 pt
X10 Volatile Compound Reduction Part 1 (A): Manage Volatile Organic Compounds (VOCs) Optimization – 1 pt
X11 Long Term Emissions Control Part 2: Flooring Optimization – 1 pt
X13 Enhanced Material Precaution Part 1: Select Optimized Materials Optimization – max 2 pts
X14 Material Transparency Part 1: Promote Ingredient Disclosure Optimization – max 2 pts

C2C Silver Level (Version 4.0)
C2C Silver Level (Version 4.0)
Green Label Plus Certification: GLP9968
C2C Silver Level (Version 4.0)
C2C Silver Level (Version 4.0)

Green Leed Contribution Credit

MR Credit: Building Product Disclosure and Optimization
Environmental Product Declarations - Option 1: Environmental Product Declaration (EPD)

MR Credit: Building Product Disclosure and Optimization
Material Ingredients - Option 1: Material Ingredient Reporting

MR Credit: Building Product Disclosure and Optimization
Material Ingredients - Option 2: Material Ingredient Optimization

MR Credit: Building Product Disclosure and Optimization
Sourcing of Raw Materials - Option 2: Leadership Extraction Practices

EQ Credit: Low Emitting Materials
Option 1: Product Category Calculations

MR Credit: Interiors Life-Cycle Impact Reduction
Option 3: Design for Flexibility

3rd Party Certified in Accordance with ISO 14044, ISO 14025 & EN15804

C2C Silver Level (Version 4.0) or HPD (Version 2.1)

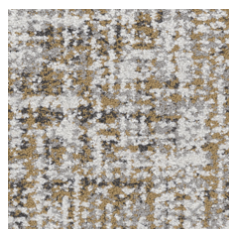
C2C Silver Level (Version 4.0)

Environmental Guarantee: Re[turn] Reclamation Program* | Through Our Environmental Guarantee, Shaw Pledges to Transport And Recycle Any Ecoworx® Carpet.

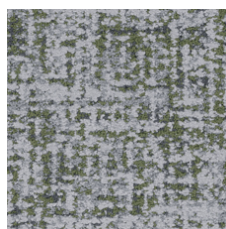
Green Label Plus Certification: GLP9968

Ecoworx® Tile with Lokdots Installation System

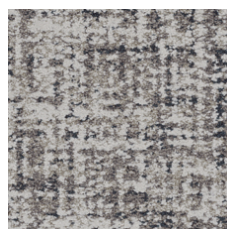
Available Colorways



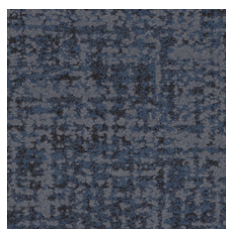
Saffron 79210
LRV 26.2 | L* 58.23



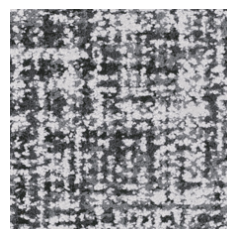
Bamboo 79375
LRV 14.7 | L* 45.17



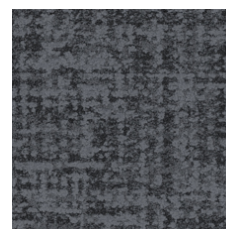
Denim 79485
LRV 18.6 | L* 50.22



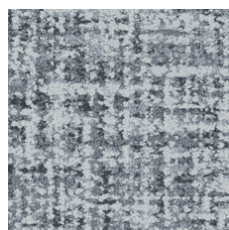
Indigo 79496
LRV 3 | L* 20.08



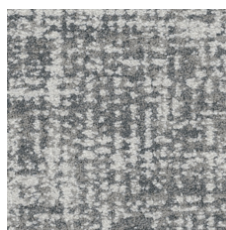
Merino 79500
LRV 15.3 | L* 46.02



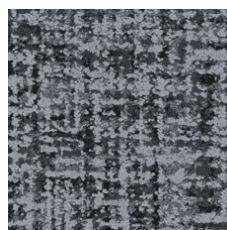
Patent 79505
LRV 3.1 | L* 20.59



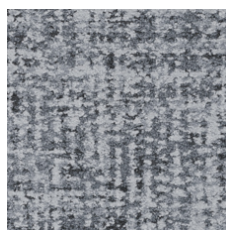
Cotton 79515
LRV 22.7 | L* 54.78



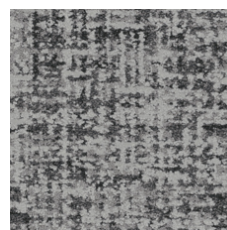
Muslin 79516
LRV 27.5 | L* 59.41



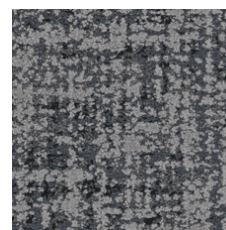
Mohair 79530
LRV 8.6 | L* 35.22



Wool 79535
LRV 13.6 | L* 43.63



Flax 79557
LRV 10.5 | L* 38.76



Angora 79596
LRV 7.2 | L* 32.26

Additional Information

* To learn more about the recyclability of our products and our re[TURN], please visit shawcontract.com/sustainability.

**Meets or exceeds all local and national regulations in country of manufacture.

***This carpet is manufactured to be ADA compliant, but to be fully ADA compliant, the end-user must ensure the carpet is adhered to the floor and installed as outlined in the ADA standards.

[Installation Guidelines](#)

[Maintenance Guidelines](#)

Specifications are subject to nominal manufacturing variance. Material supply and/or manufacturing processes may necessitate changes without notice.

This product is an exclusive design and may not be duplicated in any manner. Use of this design in the creation of another product design is also strictly prohibited.

Visit shawcontract.com/testing for more information.

