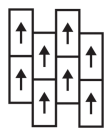


## Textile Tile

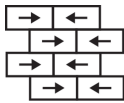
製品型	<b>Carpet Tile</b>	
コレクション	<b>Suited</b>	
スタイルナンバー	<b>5T279</b>	
建設	マルチレベル パターン/カットループ	
ファイバ	エコソリューションQ®ナイロン	
染色法	<b>100%</b> 原液着色	
一次バックキング	合成	
二次バックキング	<b>Ecworx®</b> タイル	
保護治療	<b>SSP®shaw</b> 土壌保護保証	
推奨接着剤	<b>LokDots, 3000 Carpet Tile 4 Gallon, 3000 Carpet Tile 1 Gallon, 4151 Multi-Use Carpet Tile 4 Gallon, 5000 Carpet Tile 1 Gallon, LokWorx Adhesive Tabs, 3800 Indoor Outdoor Carpet Tile 4 Gallon or 5000 Carpet Tile 4 Gallon</b>	
	u.s.	metric
商品のサイズ	<b>18 in x 36 in</b>	<b>46 cm x 91 cm</b>
ボックスあたりの面積	<b>45 ft²</b>	<b>4.18 m²</b>
ボックスあたりの個数	<b>10 pcs</b>	
ゲージ	<b>1/10 in</b>	<b>39.4 per 10 cm</b>
ステッチ	<b>8.5 per in</b>	<b>34.5 per 10 cm</b>
完成した杭の厚さ	<b>0.124 in</b>	<b>3.15 mm</b>
平均密度	<b>8129 oz/yd³</b>	<b>0.301 g/cm³</b>
キロテックス		<b>8.12</b>
総厚	<b>0.290 in</b>	<b>7.37 mm</b>
房状の重量	<b>28 oz/yd²</b>	<b>949.4 g/m²</b>



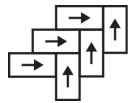
## 推奨インストール方法



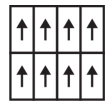
Ashlar



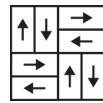
Brick



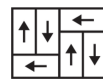
Herringbone



Monolithic



Basketweave



Half Basketweave



Boxed In

## データ + テスト

放射パネル (astm E648)

**Class I**

Nbs煙

**Less Than 450**

静電気の傾向

**Less Than 3.5 kv**

Cri Green Label Plus (glp)

**GLP1263**

錠剤テスト

**Pass\***

Adaコンプライアンス

**>0.6、ADA 歩行面およびアクセス可能ルート用推奨静摩擦係数の基準に合致\*\*\***

Test Reports may be included or listed by the manufacturing/inventory style number as opposed to the noted selling style number.

## 保証

生涯商用限定保証

コーディネート商品

Carpet Tile: **Jacquard Tile, Check Tile, Houndstooth Tile**  
Broadloom: **Textile**

属性+認定

Certifications Below Apply Exclusively To The Carpet Tile Rug Itself And Not The Lokworx Tabs Adhesive

Health & Wellbeing

Material Ingredient Transparency

**Cradle to Cradle Certified® | Silver Level (Version 4.0)**  
**Health Product Declaration (HPD) | 1,000 ppm 開示**  
**Living Building Challenge (LBC) | レッドリスト記載化学物質無配合**  
**Declare | LBC 準拠**  
**NSF 140 | ゴールド**  
**CRI Green Label Plus (GLP) | GLP1263**

Indoor Air Quality

Climate Impact

Environmental Product Declaration (EPD)  
Embodied Carbon (Cradle to Gate)  
Total Recycled Content  
Product Packaging

**ISO14044、ISO14025 および EN15804 に基づく 第三者認証取得**  
**17.17 kg CO<sub>2</sub>/m<sup>2</sup>**  
**61% (Pre-Consumer 61% | Post-Consumer 0%)**  
**100% リサイクル可能**

Global Product Assessment

**Singapore Green Label | 認証取得**  
**CE Marking (EN 14041) | 第三者認証取得**  
**Environmental Guarantee\* | Re[turn] Reclamation Program\* | Through Our Environmental Guarantee, Shaw Pledges to Transport And Recycle Any Ecoworx Carpet.**  
**Country of Origin\*\* | 中国**

Well V2 Contribution Credit

X08 Hazardous Material Reduction Part 1: Limit Hazardous Materials Optimization – 1 pt  
X10 Volatile Compound Reduction Part 1 (A): Manage Volatile Organic Compounds (VOCs) Optimization – 1 pt  
X11 Long Term Emissions Control Part 2: Flooring Optimization – 1 pt  
X13 Enhanced Material Precaution Part 1: Select Optimized Materials Optimization – max 2 pts  
X14 Material Transparency Part 1: Promote Ingredient Disclosure Optimization – max 2 pts

**C2C Silver Level (Version 4.0)**  
**C2C Silver Level (Version 4.0)**  
**Green Label Plus Certification: GLP9968**  
**C2C Silver Level (Version 4.0)**  
**C2C Silver Level (Version 4.0)**

グリーンリード貢献クレジット

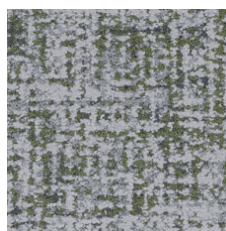
MRクレジット：製品の開示と最適化の構築  
環境製品宣言-オプション1：環境製品宣言（EPD）  
MRクレジット：製品の開示と最適化の構築  
材料成分-オプション1：材料成分レポート  
MRクレジット：製品の開示と最適化の構築  
材料成分-オプション2：材料成分の最適化  
MRクレジット：製品の開示と最適化の構築  
原材料の調達-オプション2：リーダーシップの抽出実践  
EQクレジット：低排出材料  
オプション1：製品カテゴリの計算  
MR Credit: Interiors Life-Cycle Impact Reduction  
Option 3: Design for Flexibility

**3rd Party Certified in Accordance with ISO14044, ISO14025 & EN15804**  
**C2C Silver Level (Version 4.0) or HPD (Version 2.1)**  
**C2C Silver Level (Version 4.0)**  
**Environmental Guarantee: Re[turn] Reclamation Program\* | Through Our Environmental Guarantee, Shaw Pledges to Transport And Recycle Any Ecoworx® Carpet.**  
**Green Label Plus Certification: GLP9968**  
**Ecoworx® Tile with Lokdots Installation System**

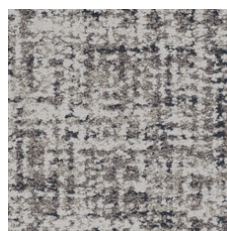
## Available Colorways



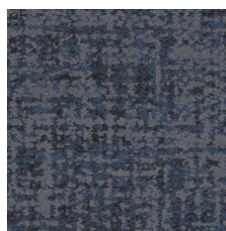
Saffron 79210  
LRV 26.2 | L\* 58.23



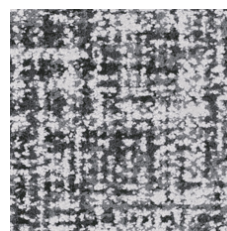
Bamboo 79375  
LRV 14.7 | L\* 45.17



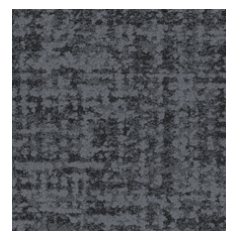
Denim 79485  
LRV 18.6 | L\* 50.22



Indigo 79496  
LRV 3 | L\* 20.08



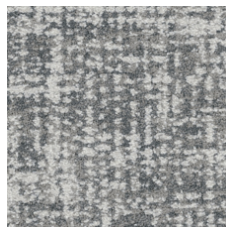
Merino 79500  
LRV 15.3 | L\* 46.02



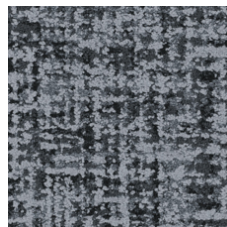
Patent 79505  
LRV 3.1 | L\* 20.59



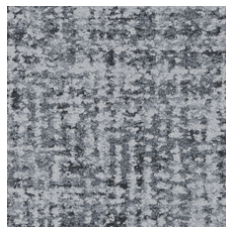
Cotton 79515  
LRV 22.7 | L\* 54.78



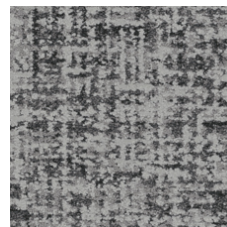
Muslin 79516  
LRV 27.5 | L\* 59.41



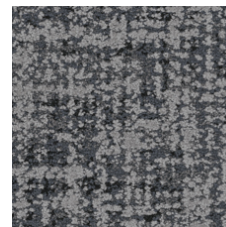
Mohair 79530  
LRV 8.6 | L\* 35.22



Wool 79535  
LRV 13.6 | L\* 43.63



Flax 79557  
LRV 10.5 | L\* 38.76



Angora 79596  
LRV 7.2 | L\* 32.26

## 追加情報

\* To learn more about the recyclability of our products and our re[TURN], please visit [shawcontract.com/sustainability](https://shawcontract.com/sustainability).

\*\*Meets or exceeds all local and national regulations in country of manufacture.

\*\*\*This carpet is manufactured to be ADA compliant, but to be fully ADA compliant, the end-user must ensure the carpet is adhered to the floor and installed as outlined in the ADA standards.

[Installation Guidelines](#)

[Maintenance Guidelines](#)

Specifications are subject to nominal manufacturing variance. Material supply and/or manufacturing processes may necessitate changes without notice.

This product is an exclusive design and may not be duplicated in any manner. Use of this design in the creation of another product design is also strictly prohibited.

Visit [shawcontract.com/testing](https://shawcontract.com/testing) for more information.

