

## Surround 9x36 Tile

상품 유형	Carpet Tile
수집	Space Worx
스타일 번호	5T278
구성	다중 레벨 루프식
섬유	Ecosolution Q® 나일론
염료 방법	100% 원착 염색
기본 백업	합성
보조 백업	Ecworx® 타일
보호 처리	SSP® Shaw 휴먼지 보호

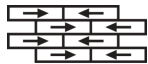
	u.s.	metric
제품 크기	9 in x 36 in	23 cm x 91 cm
상자 당 면적	45 ft <sup>2</sup>	4.18 m <sup>2</sup>
상자 당 조각	20 pcs	
계량기	1/12 in	47.2 per 10 cm
스티치	9.0 per in	36.5 per 10 cm
완성 된 말뚝 두께	0.084 in	2.13 mm
평균 밀도	6429 oz/yd <sup>3</sup>	0.238 g/cm <sup>3</sup>
총 두께	0.222 in	5.64 mm
슬을다는 무게	15 oz/yd <sup>2</sup>	508.6 g/m <sup>2</sup>



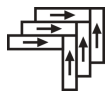
## 권장 설치 방법



Ashlar



Brick



Herringbone

## 데이터 + 테스트

복사 패널 (Astm E648)	Class I
Nbs 연기	Less Than 450
정전기 성향	Less Than 3.5 kv
알약 테스트	Pass*
Ada 준수	0.6 이상, ADA 보행 노면과 이용 가능한 경로의 권장 마찰계수 충족***

## 보증

종신 상용 제한

코디네이팅 제품

Carpet Tile: **Basic Tile, Centric Tile, Primary Tile, Surround Tile, Basic 9x36**

속성 + 인증

Certifications Below Apply Exclusively To The Carpet Tile Rug Itself And Not The Lokworx Tabs Adhesive

Climate Impact

Embodied Carbon (Cradle to Gate)

**10.7 (based upon 19.6 oz face weight) kg CO<sub>2</sub>/m<sup>2</sup>**

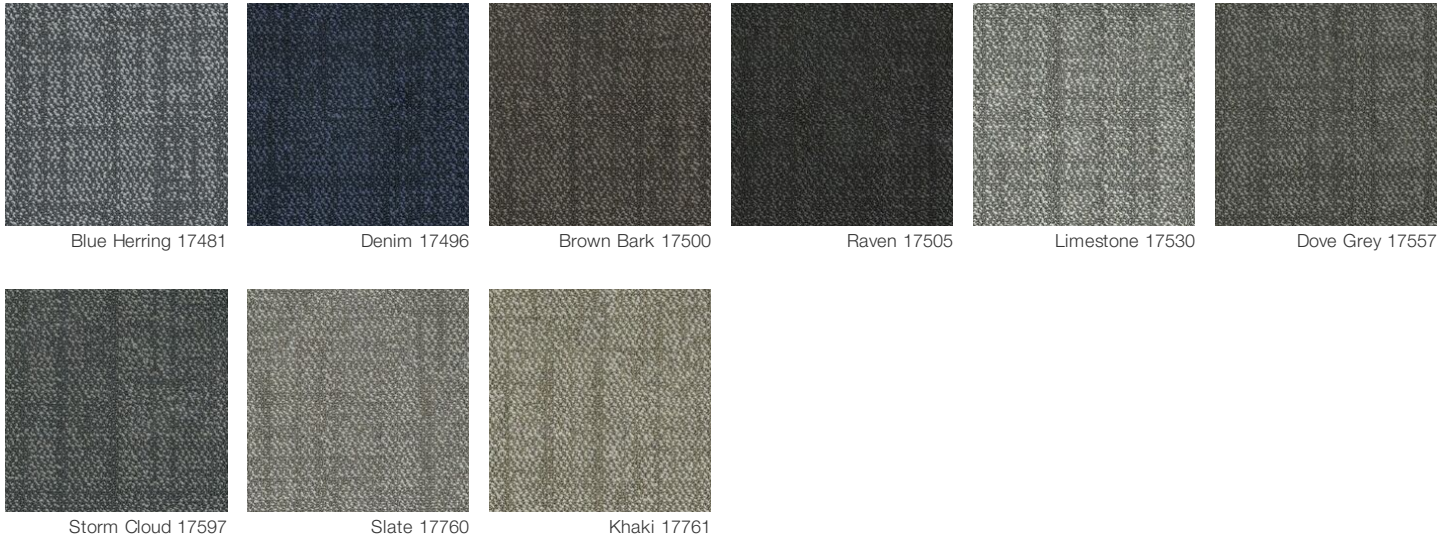
Total Recycled Content

**37% (Pre-Consumer 37% | Post-Consumer 0%)**

Global Product Assessment

**Country of Origin\*\* | Imported**

Available Colorways



추가 정보

\*\*\*This carpet is manufactured to be ADA compliant, but to be fully ADA compliant, the end-user must ensure the carpet is adhered to the floor and installed as outlined in the ADA standards.

Specifications are subject to nominal manufacturing variance. Material supply and/or manufacturing processes may necessitate changes without notice.

This product is an exclusive design and may not be duplicated in any manner. Use of this design in the creation of another product design is also strictly prohibited.

Visit [shawcontract.com/testing](http://shawcontract.com/testing) for more information.