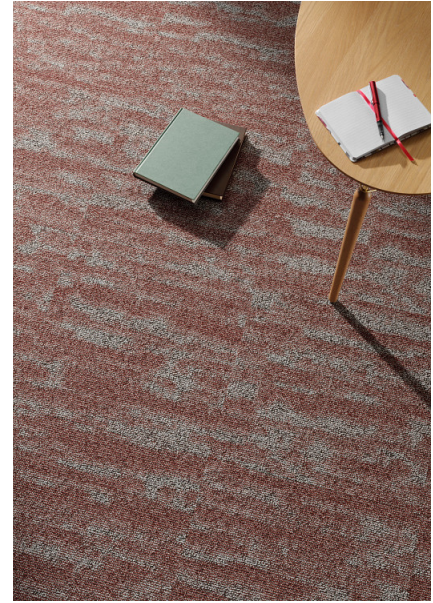


Dream Taskworx® Tile

Style Number	5T262	
Collection	Kindred	
Product Type	Carpet Tile	
Construction	Standard	Data + Performance
Type of Manufacture	ISO 2424	tufted 1/10" 39.4 per 10cm
Aspect	ISO 2424	Multi-Level Pattern Loop
Dye Method	EN 994	100% Solution Dyed
Dimensions	EN 994	50 cm x 50 cm 20 tiles (5 m²) per box
Primary Backing	ISO 2424	Pet Non-Woven
Secondary Backing	ISO 2424	Taskworx® Polymer Modified Bitumen
Pile Fibre Composition	ISO 2424	Ecosolution Q® Polyamide 6
Total Thickness	ISO 1765	6.0 mm
Effective Pile Thickness	ISO 1766	2.8 mm
Total Mass	ISO 8543	4037 g/m2
Nominal Total Pile Mass	ISO 2424	644 g/m²
Effective Pile Mass	ISO 8543	363 g/m²
Pile Density	ISO 8543	0.132 g/m3
Total Recycled Content		49% (pre-consumer 49% post-consumer 0%)

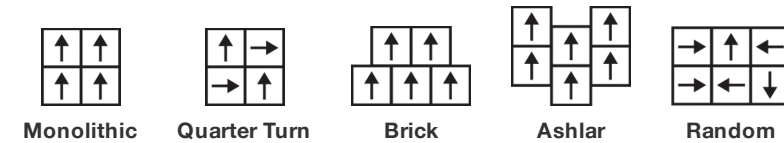


Performance

Number of Tufts	ISO 1763	129,000/m² 32.8 per 10 cm
Electrostatic Propensity	ISO 6356	≤ 2.0 kv (Stroll Test)
Use Classification	EN 1307	33 Commercial Heavy
Luxury Class	EN 1307	LC1
Dimensional Stability	EN 986	≤ 0.2%
Impact Sound Insulation	ISO 10140	26 Db
Sound Absorption Classification	ISO 354/11654	0.15 Aw Class E
Thermal Resistance m² K/W	ISO 8302	0.066 M² K/W Tog 0.66
Dry Slip Resistance	ISO 13893	Pass/No Pulled Loops
Colour Fastness To Light	ISO 105-B02	>6
Flammability	EN 13501-1	Bfl-S1 (Adhered Testing)
Castor Chair	EN 985	≥2.4 Continuous Use

[15 Year Commercial Limited](#) subject to installation in full accordance with manufacturer's instructions and a regular effective cleaning and maintenance programme.

Recommended Installation Method



26 dB

Corporate Headquarters +1 800 257 7429 | +1 706 532 7984 | Atlanta +1 404 853 7429 | Bengaluru +91 80 6773 0202 | Beijing +86 10 6568 588 | Chicago +1 312 467 1331 | Dubai +971 4 584 6956 | Hong Kong +852 2623 0371 | Latin America (Miami) +1 305 827 5912 | London +44 207 961 4120 | Los Angeles +1 800 233 1614 | Melbourne +61 3 9939 8543 | Mexico City +55 5010 7600 | Mumbai +91 22 6284 5050 | Nantong +86 400 800 7429 | New York +1 212 953 7429 | Paris +33 (0) 1 81 22 44 39 | San Francisco +1 415 955 1920 | Santiago +562 2431 5000 x 550 | São Paulo +55 11 3071 1702 | Shanghai +86 21 3338 4000 | Singapore +65 6733 1811 | Sydney +61 800 556 302

Coordinating Products

Carpet Tile: **Memory Comfortworx® Tile, Dream Comfortworx® Tile, Belong Comfortworx® Tile, Together Comfortworx® Tile, Illusion Comfortworx® Tile, Belong Taskworx® Hexagon Tile, Together Hexagon Taskworx® Tile, Belong Taskworx® Tile, Memory Taskworx® Tile, Together Taskworx® Tile, Illusion Taskworx® Tile**

Material Health & Environmental Certifications

Certifications below apply exclusively to the carpet tile rug itself and not the LokWorx Tabs adhesive

Declaration of Performance	EU.DOP/0493/CPR/0621/0422/BT
Cradle to Cradle Certified®	Bronze Level (Version 3.1)
Environmental Product Declaration (EPD)	3rd Party Certified in Accordance with ISO14044, ISO14025 & EN15804
Building Research Establishment (BRE)	A+ Health/A+ Retail 0.301/0.399 Ecopoints
Environmental Guarantee*	Take Back Policy Offered For All Taskworx Products
ISO 9001	Certified
Country of Origin**	United Kingdom
BREEAM Contribution Credit	Certificate of Approval Schools/Offices/Health/Industrial Shed Retail

WELL V2 Contribution Credit

X08 Hazardous Material Reduction Part 1: Limit Hazardous Materials Optimization	C2C Bronze Level (Version 3.1)
X10 Volatile Compound Reduction Part 1 (A): Manage Volatile Organic Compounds (VOCs) Optimization	C2C Bronze Level (Version 3.1)
X10 Volatile Compound Reduction Part 2: Manage Semi-Volatile Organic Compounds (SVOCs) Optimization	C2C Bronze Level (Version 3.1)
X11 Long Term Emissions Control Part 2: Flooring Optimization	M1> Emissions Class For Building Material
X13 Enhanced Material Precaution Part 1: Select Optimized Materials Optimization	C2C Bronze Level (Version 3.1)
X14 Material Transparency Part 1: Promote Ingredient Disclosure Optimization	C2C Bronze Level (Version 3.1)

Leed v4 Contribution Credits

MR Credit: Building Product Disclosure and Optimization Environmental Product Declarations - Option 1: Environmental Product Declaration (EPD)	3rd Party Certified in Accordance with ISO14044, ISO14025 & EN15804
MR Credit: Building Product Disclosure and Optimization Material Ingredients - Option 1: Material Ingredient Reporting	C2C Bronze Level (Version 3.1)
MR Credit: Building Product Disclosure and Optimization Material Ingredients - Option 2: Material Ingredient Optimization	C2C Bronze Level (Version 3.1)

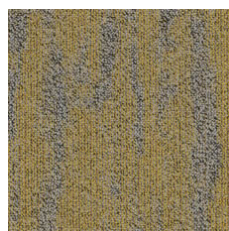
Air Quality

Indoor Air Comfort Gold	Certified
M1	Certified

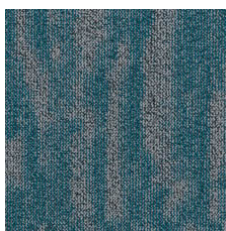
Memberships

WGBC Framework	WGBC Framework
UKGBC	UKGBC
Emirates Green Building Council	Emirates Green Building Council
Chemsec	Chemsec

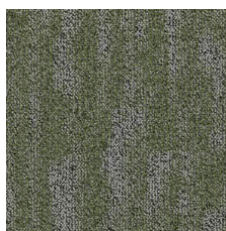
Light Reflectance Value



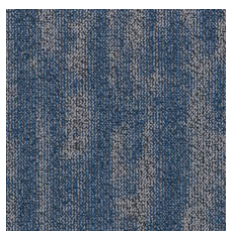
Golden 48211
LRV 21.3 | L* 53.28



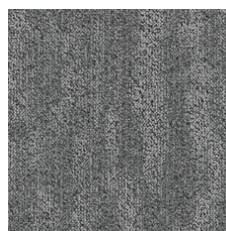
Comfort 48323
LRV 10.9 | L* 39.39



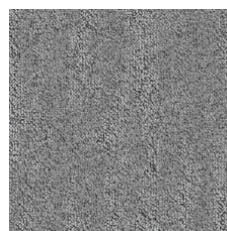
Greenery 48370
LRV 13.9 | L* 44.08



Serene 48486
LRV 11.4 | L* 40.33



Hearten 48515
LRV 13.9 | L* 44.1



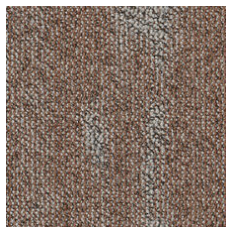
Greige 48516
LRV 22.1 | L* 54.09



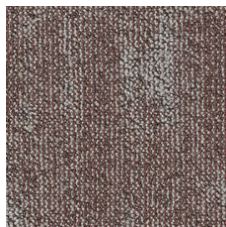
Sense 48535
LRV 12.1 | L* 41.36



Rainstorm 48536
LRV 18.7 | L* 50.36



Apricot 48675
LRV 19.6 | L* 51.37



Rosewood 48870
LRV 16.4 | L* 47.5

Additional Information

**Manufactured in ISO 9001 certified facility. Meets or exceeds all local and national regulations in country of manufacture.

[Installation Guidelines](#)

[Maintenance Guidelines](#)

15 year commercial limited

Specifications are subject to nominal manufacturing variance. Material supply and/or manufacturing processes may necessitate changes without notice.

This product is an exclusive design and may not be duplicated in any manner. Use of this design in the creation of another product design is also strictly prohibited.

Visit shawcontract.com/testing for more information.



Corporate Headquarters +1 800 257 7429 | +1 706 532 7984 | Atlanta +1 404 853 7429 | Bengaluru +91 80 6773 0202 | Beijing +86 10 6568 588 | Chicago +1 312 467 1331 | Dubai +971 4 584 6956 | Hong Kong +852 2623 0371 | Latin America (Miami) +1 305 827 5912 | London +44 207 961 4120 | Los Angeles +1 800 233 1614 | Melbourne +61 3 9939 8543 | Mexico City +55 5010 7600 | Mumbai +91 22 6284 5050 | Nantong +86 400 800 7429 | New York +1 212 953 7429 | Paris +33 (0) 1 81 22 44 39 | San Francisco +1 415 955 1920 | Santiago +562 2431 5000 x 550 | São Paulo +55 11 3071 1702 | Shanghai +86 21 3338 4000 | Singapore +65 6733 1811 | Sydney +61 800 556 302