

Support Tile

Tipo De Produto	Carpete Em Placas	
Coleção	Assembly	
Número Do Produto	5T267	
Construção	Padrão Multinível / Pêlo Cortado/Bouclé	
Método De Tingimento	100% Solution Dyed	
Base Primária	Sintético	
Base Secundária	Base Ecoworx®	
Tratamentos De Proteção	SSP® Shaw Proteção Anti-Manchas	
Adesivo Recomendado	LokDots, 3000 Carpet Tile 4 Gallon, 3000 Carpet Tile 1 Gallon, 4151 Multi-Use Carpet Tile 4 Gallon, 5000 Carpet Tile 1 Gallon, LokWorx Adhesive Tabs, 3800 Indoor Outdoor Carpet Tile 4 Gallon or 5000 Carpet Tile 4 Gallon	
	u.s.	metric
Tamanho Do Produto	12 in x 48 in	30 cm x 122 cm
Área Por Caixa	48 ft²	4.46 m²
Peças Por Caixa	12 pcs	
Calibre	1/12 in	47.2 per 10 cm
Pontos	8.5 per in	34.0 per 10 cm
Espessura Da Fibra Acabada	0.095 in	2.41 mm
Densidade Média	7579 oz/yd³	0.28 g/cm³
Kilotex		11.27
Espessura Total	0.257 in	6.53 mm
Peso Da Fibra	20 oz/yd²	678.1 g/m²



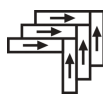
Método De Instalação Recomendado



Ashlar



Brick



Herringbone



Monolithic



Stagger

Dados + Teste

Painel Radiante (Astm E648)

Class I

Nbs Fumaça

Less Than 450

Propensão Eletrostática

Less Than 3.5 kv

Cri Green Label Plus (Bpl)

GLP9968

Teste De Ignição (Pill)

Pass*

Ada Compliance

≥0.6, Atende as recomendações do coeficiente de fricção estático para as superfícies caminháveis ADA e rotas acessíveis***

Test Reports may be included or listed by the manufacturing/inventory style number as opposed to the noted selling style number.

Garantias

Garantia Comercial Vitalícia Limitada

Produtos Coordenados

Carpet Tile: **Establish Tile, Convene Tile**

Atributos + Certificações

Certifications Below Apply Exclusively To The Carpet Tile Rug Itself And Not The Lokworx Tabs Adhesive

Health & Wellbeing

Material Ingredient Transparency

Cradle to Cradle Certified® | Silver Level (Version 4.0)
Health Product Declaration (HPD) | Divulgado 1,000 ppm
Living Building Challenge (LBC) | Livre De Químicos Do Red List
Declare | Compatível LBC
NSF 140 | Ouro
CRI Green Label Plus (GLP) | GLP9968

Indoor Air Quality

Climate Impact

Environmental Product Declaration (EPD)

3rd Party Certified De Acordo Com ISO14044, ISO14025 & EN15804
3.75 kg CO₂/m²
Carbon Neutral
57% (Pre-Consumer 57% | Post-Consumer 0%)
100% Reciclável

Embodied Carbon (Cradle to Gate)

Life-Cycle Carbon Emissions

Total Recycled Content

Product Packaging

Global Product Assessment

Singapore Green Label | Certificado
CE Marking (EN 14041) | Certificado 3rd Party
Environmental Guarantee* | Re[turn] Reclamation Program* | Through Our Environmental Guarantee, Shaw Pledges to Transport And Recycle Any Ecoworx Carpet.
Country of Origin | Imported**

Well V2 Contribution Credit

X08 Hazardous Material Reduction Part 1: Limit Hazardous Materials Optimization – 1 pt

C2C Silver Level (Version 4.0)

X10 Volatile Compound Reduction Part 1 (A): Manage Volatile Organic Compounds (VOCs) Optimization – 1 pt

C2C Silver Level (Version 4.0)

X11 Long Term Emissions Control Part 2: Flooring Optimization – 1 pt

Green Label Plus Certification: GLP9968

X13 Enhanced Material Precaution Part 1: Select Optimized Materials Optimization – max 2 pts

C2C Silver Level (Version 4.0)

X14 Material Transparency Part 1: Promote Ingredient Disclosure Optimization – max 2 pts

C2C Silver Level (Version 4.0)

Crédito De Contribuição

MR Credit: Divulgação e otimização de produtos de construção Declarações ambientais do produto - Opção 1: Declaração ambiental do produto (EPD)

3rd Party Certified in Accordance with ISO14044, ISO14025 & EN15804

MR Credit: Divulgação e otimização de produtos de construção Ingredientes materiais - Opção 1: Relatório de ingredientes materiais

C2C Silver Level (Version 4.0) or HPD (Version 2.1)

MR Credit: Divulgação e otimização de produtos de construção Ingredientes do material - Opção 2: Otimização do ingrediente do material

C2C Silver Level (Version 4.0)

MR Credit: Divulgação e otimização de produtos de construção Fornecimento de matérias-primas - Opção 2: Práticas de extração de liderança

Environmental Guarantee: Re[turn] Reclamation Program* | Through Our Environmental Guarantee, Shaw Pledges to Transport And Recycle Any Ecoworx® Carpet.

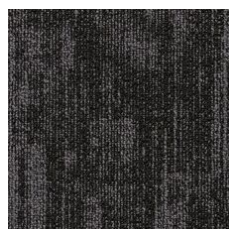
Crédito de EQ: Materiais de baixa emissão Opção 1: cálculos de categoria de produto

Green Label Plus Certification: GLP9968

MR Credit: Interiors Life-Cycle Impact Reduction Option 3: Design for Flexibility

Ecworx® Tile with Lokdots Installation System

Available Colorways



System 67505
LRV 6.6 | L* 30.84



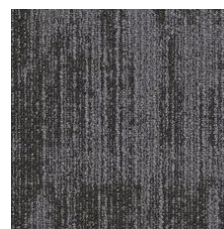
Interaction 67515
LRV 19.6 | L* 51.34



Network 67535
LRV 16.5 | L* 47.64



Link 67555
LRV 9.7 | L* 37.21



Foundation 67580
LRV 9.8 | L* 37.43

Informação Adicional

* To learn more about the recyclability of our products and our re[TURN], please visit shawcontract.com/sustainability.

**Meets or exceeds all local and national regulations in country of manufacture.

***This carpet is manufactured to be ADA compliant, but to be fully ADA compliant, the end-user must ensure the carpet is adhered to the floor and installed as outlined in the ADA standards.

[Installation Guidelines](#)

[Maintenance Guidelines](#)

Specifications are subject to nominal manufacturing variance. Material supply and/or manufacturing processes may necessitate changes without notice.

This product is an exclusive design and may not be duplicated in any manner. Use of this design in the creation of another product design is also strictly prohibited.

Visit shawcontract.com/testing for more information.



Corporate Headquarters +1 800 257 7429 | +1 706 532 7984 | Atlanta +1 404 853 7429 | Bengaluru +91 80 6773 0202 | Beijing +86 10 6568 588 | Chicago +1 312 467 1331 | Dubai +971 4 584 6956 | Hong Kong +852 2623 0371 | London +44 207 961 4120 | Los Angeles +1 800 233 1614 | Melbourne +61 3 9939 8543 | Mexico City +55 5010 7600 | Mumbai +91 22 6284 5050 | Nantong +86 400 800 7429 | New York +1 212 953 7429 | Paris +33 (0) 1 81 22 44 39 | San Francisco +1 415 955 1920 | Shanghai +86 21 3338 4000 | Singapore +65 6733 1811 | Sydney +61 800 556 302

© 2025 Shaw Industries Group, Inc., a Berkshire Hathaway Company
July 1, 2025

3 of 3