

## Textile Taskworx® Tile

Style Number	<b>5T291</b>	
Collection	<b>Suited</b>	
Product Type	<b>Carpet Tile</b>	
Construction	Standard	Data + Performance
Type of Manufacture	<b>ISO 2424</b>	<b>tufted 1/10"   39.4 per 10cm</b>
Aspect	<b>ISO 2424</b>	<b>Multi-Level Pattern Loop</b>
Dye Method	<b>EN 994</b>	<b>100% Solution Dyed</b>
Dimensions	<b>EN 994</b>	<b>50 cm x 100 cm   10 tiles (5 m²) per box</b>
Primary Backing	<b>ISO 2424</b>	<b>Pet Non-Woven</b>
Secondary Backing	<b>ISO 2424</b>	<b>Taskworx®   Polymer Modified Bitumen</b>
Pile Fibre Composition	<b>ISO 2424</b>	<b>Eco Solution Q100™ Polyamide 6   Contains 100% Recycled Content</b>
Total Thickness	<b>ISO 1765</b>	<b>7.9mm*</b>
Effective Pile Thickness	<b>ISO 1766</b>	<b>2.3 mm*</b>
Total Mass	<b>ISO 8543</b>	<b>4686 g/m²*</b>
Nominal Total Pile Mass	<b>ISO 2424</b>	<b>949 g/m²</b>
Effective Pile Mass	<b>ISO 8543</b>	<b>303 g/m²*</b>
Pile Density	<b>ISO 8543</b>	<b>0.133 g/cm³*</b>
Total Recycled Content		<b>66% (pre-consumer 66%   post-consumer 0%)</b>

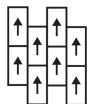


### Performance

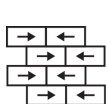
Number of Tufts	<b>ISO 1763</b>	<b>156,000/m²   39.8 per 10cm</b>
Protective Treatments		<b>SSP® Shaw Soil Protection</b>
Electrostatic Propensity	<b>ISO 6356</b>	<b>≤ 2.0 kv (Stroll Test)</b>
Use Classification	<b>EN 1307</b>	<b>33 Commercial Heavy</b>
Luxury Class	<b>EN 1307</b>	<b>LC2</b>
Dimensional Stability	<b>EN 986</b>	<b>≤ 0.2%</b>
Impact Sound Insulation	<b>ISO 10140</b>	<b>26db*</b>
Sound Absorption Classification	<b>ISO 354/11654</b>	<b>0.20 Aw   Class E*</b>
Thermal Resistance m² K/W	<b>ISO 8302</b>	<b>0.089 M² K/W Tog 0.89</b>
Dry Slip Resistance	<b>ISO 13893</b>	<b>Pass/No Pulled Loops</b>
Colour Fastness To Light	<b>ISO 105-B02</b>	<b>&gt;6</b>
Flammability	<b>EN 13501-1</b>	<b>Bfl-S1 (Adhered Testing)</b>
Castor Chair	<b>EN 985</b>	<b>≥2.4 Continuous Use</b>

**15 Year Commercial Limited** subject to installation in full accordance with manufacturer's instructions and a regular effective cleaning and maintenance programme.

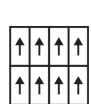
### Recommended Installation Method



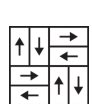
Ashlar



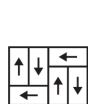
Brick



Monolithic



Basketweave



Half Basketweave



Boxed In



26dB

Corporate Headquarters +1 800 257 7429 | +1 706 532 7984 | Atlanta +1 404 853 7429 | Bengaluru +91 80 6773 0202 | Beijing +86 10 6568 588 | Chicago +1 312 467 1331 | Dubai +971 4 584 6956 | Hong Kong +852 2623 0371 | Latin America (Miami) +1 305 827 5912 | London +44 207 961 4120 | Los Angeles +1 800 233 1614 | Melbourne +61 3 9939 8543 | Mexico City +55 5010 7600 | Mumbai +91 22 6284 5050 | Nantong +86 400 800 7429 | New York +1 212 953 7429 | Paris +33 (0) 1 81 22 44 39 | San Francisco +1 415 955 1920 | Santiago +562 2431 5000 x 550 | São Paulo +55 11 3071 1702 | Shanghai +86 21 3338 4000 | Singapore +65 6733 1811 | Sydney +61 800 556 302

Coordinating Products

Carpet Tile: **Beam Comfortworx® Tile, Braid Comfortworx® Tile, Textile Comfortworx® Tile, Check Comfortworx® Tile, Jacquard Comfortworx® Tile, Houndstooth Comfortworx® Tile, Houndstooth Taskworx® Tile, Check Taskworx® Tile, Jacquard Taskworx® Tile, Beam Taskworx® Tile, Braid Taskworx® Tile**

Material Health & Environmental Certifications

Certifications below apply exclusively to the carpet tile rug itself and not the LokWorx Tabs adhesive

Declaration of Performance	EU.DOP/0493/CPR/0621/0422/BT
Cradle to Cradle Certified®	Bronze Level (Version 3.1)
Environmental Product Declaration (EPD)	3rd Party Certified in Accordance with ISO14044, ISO14025 & EN15804
Embodied Carbon (Cradle to Gate)	4.37 kg CO <sub>2</sub> /m <sup>2</sup>
Life-Cycle Carbon Emissions	Low Embodied Carbon
Building Research Establishment (BRE)	A+ Health/A+ Retail 0.34/0.453 Ecopoints
Environmental Guarantee*	Take Back Policy Offered For All Taskworx Products
ISO 9001	Certified
Country of Origin**	United Kingdom
BREEAM Contribution Credit	Certificate of Approval Schools/Offices/Health/Industrial Shed Retail

WELL V2 Contribution Credit

X08 Hazardous Material Reduction Part 1: Limit Hazardous Materials Optimization	C2C Bronze Level (Version 3.1)
X10 Volatile Compound Reduction Part 1 (A): Manage Volatile Organic Compounds (VOCs) Optimization	C2C Bronze Level (Version 3.1)
X11 Long Term Emissions Control Part 2: Flooring Optimization	M1> Emissions Class For Building Material
X13 Enhanced Material Precaution Part 1: Select Optimized Materials Optimization	C2C Bronze Level (Version 3.1)
X14 Material Transparency Part 1: Promote Ingredient Disclosure Optimization	C2C Bronze Level (Version 3.1)

Leed v4 Contribution Credits

MR Credit: Building Product Disclosure and Optimization Environmental Product Declarations - Option 1: Environmental Product Declaration (EPD)	3rd Party Certified in Accordance with ISO14044, ISO14025 & EN15804
MR Credit: Building Product Disclosure and Optimization Material Ingredients - Option 1: Material Ingredient Reporting	C2C Bronze Level (Version 3.1)
MR Credit: Building Product Disclosure and Optimization Material Ingredients - Option 2: Material Ingredient Optimization	C2C Bronze Level (Version 3.1)

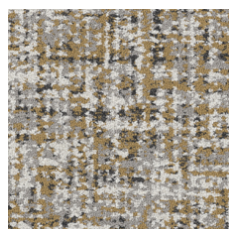
Air Quality

Indoor Air Comfort Gold	Certified
M1	Certified

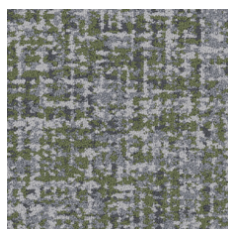
Memberships

WGBC Framework	WGBC Framework
UKGBC	UKGBC
Emirates Green Building Council	Emirates Green Building Council
Chemsec	Chemsec

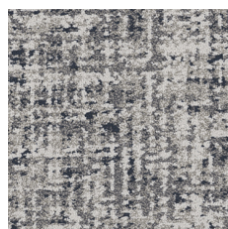
## Light Reflectance Value



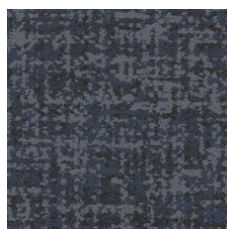
Saffron 79210  
LRV 26.2 | L\* 58.23



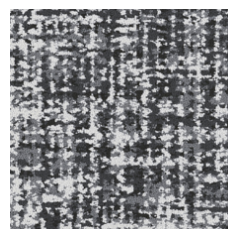
Bamboo 79375  
LRV 14.7 | L\* 45.17



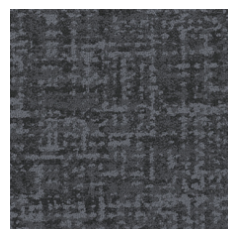
Denim 79485  
LRV 18.6 | L\* 50.22



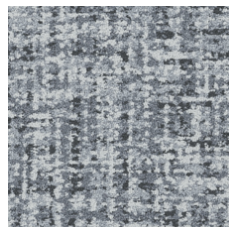
Indigo 79496  
LRV 3 | L\* 20.08



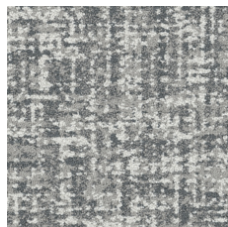
Merino 79500  
LRV 15.3 | L\* 46.02



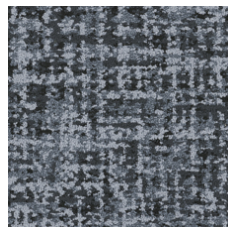
Patent 79505  
LRV 3.1 | L\* 20.59



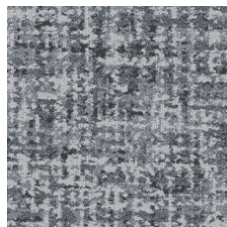
Cotton 79515  
LRV 22.7 | L\* 54.78



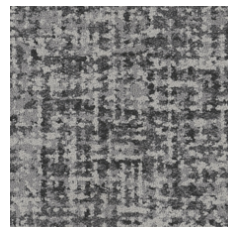
Muslin 79516  
LRV 27.5 | L\* 59.41



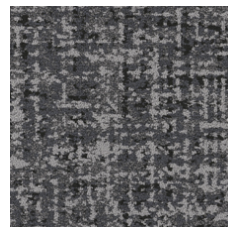
Mohair 79530  
LRV 8.6 | L\* 35.22



Wool 79535  
LRV 13.6 | L\* 43.63



Flax 79557  
LRV 10.5 | L\* 38.76



Angora 79596  
LRV 7.2 | L\* 32.26

## Additional Information

\*\*Manufactured in ISO 9001 certified facility. Meets or exceeds all local and national regulations in country of manufacture.

[Installation Guidelines](#)

[Maintenance Guidelines](#)

15 year commercial limited

Specifications are subject to nominal manufacturing variance. Material supply and/or manufacturing processes may necessitate changes without notice.

This product is an exclusive design and may not be duplicated in any manner. Use of this design in the creation of another product design is also strictly prohibited.

Visit [shawcontract.com/testing](https://shawcontract.com/testing) for more information.



Corporate Headquarters +1 800 257 7429 | +1 706 532 7984 | Atlanta +1 404 853 7429 | Bengaluru +91 80 6773 0202 | Beijing +86 10 6568 588 | Chicago +1 312 467 1331 | Dubai +971 4 584 6956 | Hong Kong +852 2623 0371 | Latin America (Miami) +1 305 827 5912 | London +44 207 961 4120 | Los Angeles +1 800 233 1614 | Melbourne +61 3 9939 8543 | Mexico City +55 5010 7600 | Mumbai +91 22 6284 5050 | Nantong +86 400 800 7429 | New York +1 212 953 7429 | Paris +33 (0) 1 81 22 44 39 | San Francisco +1 415 955 1920 | Santiago +562 2431 5000 x 550 | São Paulo +55 11 3071 1702 | Shanghai +86 21 3338 4000 | Singapore +65 6733 1811 | Sydney +61 800 556 302