



Textile Taskworx® Tile

| Style Number | 5T291 | |
|--------------------------|--------------------|--|
| Collection | Suited | |
| Product Type | Carpet Tile | |
| Construction | Standard | Data + Performance |
| Type of Manufacture | ISO 2424 | tufted 1/10" 39.4 per 10cm |
| Aspect | ISO 2424 | Multi-Level Pattern Loop |
| Dye Method | EN 994 | 100% Solution Dyed |
| Dimensions | EN 994 | 50 cm x 100 cm 10 tiles (5 m²) per box |
| Primary Backing | ISO 2424 | Pet Non-Woven |
| Secondary Backing | ISO 2424 | Taskworx® Tile Polymer Modified Bitumen |
| Pile Fibre Composition | ISO 2424 | Eco Solution Q100® Polyamide 6 Contains 100% Recycled Content |
| Total Thickness | ISO 1765 | 7.9mm* |
| Effective Pile Thickness | ISO 1766 | 2.3 mm* |
| Total Mass | ISO 8543 | 4686 g/m²* |
| Nominal Total Pile Mass | ISO 2424 | 949 g/m² |
| Effective Pile Mass | ISO 8543 | 303 g/m²* |
| Pile Density | ISO 8543 | 0.133 g/cm³* |
| Total Recycled Content | | 46% (pre-consumer 46% post-consumer 0%) |

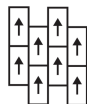


Performance

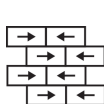
| | | |
|---------------------------------|----------------------|-----------------------------------|
| Number of Tufts | ISO 1763 | 156,000/m² 39.8 per 10cm |
| Protective Treatments | | SSP® Shaw Soil Protection |
| Electrostatic Propensity | ISO 6356 | ≤ 2.0 kv (Stroll Test) |
| Use Classification | EN 1307 | 33 Commercial Heavy |
| Luxury Class | EN 1307 | LC2 |
| Dimensional Stability | EN 986 | ≤ 0.2% |
| Impact Sound Insulation | ISO 10140 | 26db* |
| Sound Absorption Classification | ISO 354/11654 | 0.20 Aw Class E* |
| Thermal Resistance m² K/W | ISO 8302 | 0.089 M² K/W Tog 0.89 |
| Dry Slip Resistance | ISO 13893 | Pass/No Pulled Loops |
| Colour Fastness To Light | ISO 105-B02 | >6 |
| Flammability | EN 13501-1 | Bfl-S1 (Adhered Testing) |
| Castor Chair | EN 985 | ≥2.4 Continuous Use |

15 Year Commercial Limited Warranty subject to installation in full accordance with the manufacturer's instructions and a regular effective cleaning and maintenance programme. Second location warranties are available with the use of non-adhesive IOBAC Magtabs and Tabit accessories.

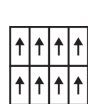
Recommended Installation Method



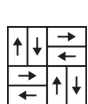
Ashlar



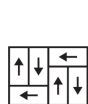
Brick



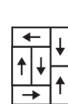
Monolithic



Basketweave



Half Basketweave



Boxed In



26dB



EU.DOP/0493/CPR/0621/0422/BT
OOSTERHOUT SHOWROOM, VAARTWEG 10, 4905
BL NETHERLANDS (NLD)
Notified Body 2895



UK.DOP/0338/CPR/1220/0422/BT
SHAW EUROPE LIMITED BLACKADDIE RD,
SANQUHAR DG4 6DB, UNITED KINGDOM
Approved Body 0338



EN14041:2004/AC:2006

For use as an indoor floor covering as specified by the manufacturer

Coordinating Products

Carpet Tile: **Beam Comfortworx® Tile, Braid Comfortworx® Tile, Textile Comfortworx® Tile, Check Comfortworx® Tile, Jacquard Comfortworx® Tile, Houndstooth Comfortworx® Tile, Houndstooth Taskworx® Tile, Check Taskworx® Tile, Jacquard Taskworx® Tile, Beam Taskworx® Tile, Braid Taskworx® Tile**

Product Transparency

Shaw Contract is dedicated to providing clients with a building chemistry that's safe and dependable. Working together, we will help you meet your goals as they pertain to material health. TaskWorx® products are Cradle to Cradle Certified® Bronze and assessed for impacts on human health and the environment. This product can be recycled. When it's time to replace, we can collect through our re-[TURN] scheme in EMEA.

Material Health & Environmental Certifications

Certifications below apply exclusively to the carpet tile rug itself and not the LokWorx Tabs adhesive

| | |
|---|---|
| Declaration of Performance | EU.DOP/0493/CPR/0621/0422/BT |
| Cradle to Cradle Certified® | Bronze Level (Version 3.1) |
| Environmental Product Declaration (EPD) | 3rd Party Certified in Accordance with ISO14044, ISO14025 & EN15804 |
| Embodied Carbon (Cradle to Gate) | 4.37 kg CO ₂ /m ² |
| Life-Cycle Carbon Emissions | Carbon Neutral |
| Building Research Establishment (BRE) | A+ Health/A+ Retail 0.34/0.453 Ecopoints |
| Environmental Guarantee* | Take Back Policy Offered For All Taskworx Products |
| ISO 9001 | Certified |
| Country of Origin** | United Kingdom |
| BREEAM Contribution Credit | Certificate of Approval Schools/Offices/Health/Industrial Shed Retail |

WELL V2 Contribution Credit

| | |
|--|---|
| X08 Hazardous Material Reduction Part 1: Limit Hazardous Materials Optimization | C2C Bronze Level (Version 3.1) |
| X10 Volatile Compound Reduction Part 1 (A): Manage Volatile Organic Compounds (VOCs) Optimization | C2C Bronze Level (Version 3.1) |
| X11 Long Term Emissions Control Part 2: Flooring Optimization | M1> Emissions Class For Building Material |
| X13 Enhanced Material Precaution Part 1: Select Optimized Materials Optimization | C2C Bronze Level (Version 3.1) |
| X14 Material Transparency Part 1: Promote Ingredient Disclosure Optimization | C2C Bronze Level (Version 3.1) |

Leed v4 Contribution Credits

| | |
|---|---|
| MR Credit: Building Product Disclosure and Optimization Environmental Product Declarations - Option 1: Environmental Product Declaration (EPD) | 3rd Party Certified in Accordance with ISO14044, ISO14025 & EN15804 |
| MR Credit: Building Product Disclosure and Optimization Material Ingredients - Option 1: Material Ingredient Reporting | C2C Bronze Level (Version 3.1) |
| MR Credit: Building Product Disclosure and Optimization Material Ingredients - Option 2: Material Ingredient Optimization | C2C Bronze Level (Version 3.1) |
| EQ Credit: Low Emitting Materials Option 1: Product Category Calculations | Certified |

Air Quality

Indoor Air Comfort Gold
M1

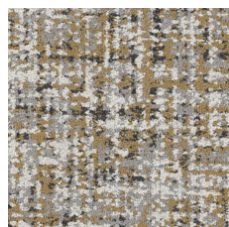
Certified
Certified

Memberships

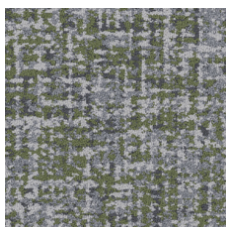
WGBC Framework
UKGBC
Emirates Green Building Council
Chemsec

WGBC Framework
UKGBC
Emirates Green Building Council
Chemsec

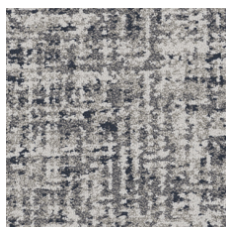
Light Reflectance Value



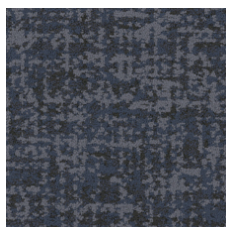
Saffron 79210
LRV 26.2 | L* 58.23



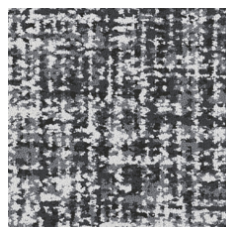
Bamboo 79375
LRV 14.7 | L* 45.17



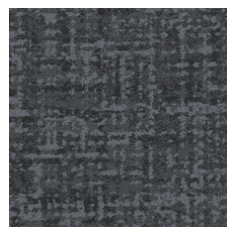
Denim 79485
LRV 18.6 | L* 50.22



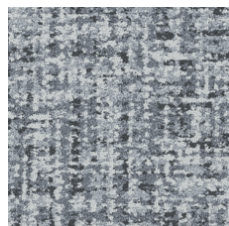
Indigo 79496
LRV 3 | L* 20.08



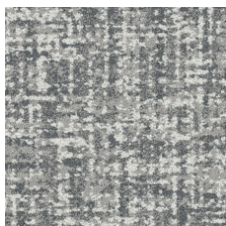
Merino 79500
LRV 15.3 | L* 46.02



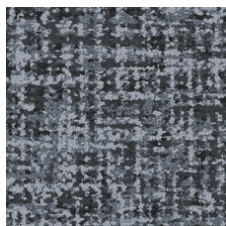
Patent 79505
LRV 3.1 | L* 20.59



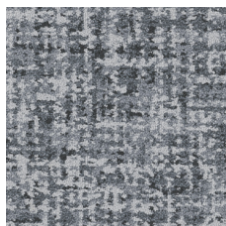
Cotton 79515
LRV 22.7 | L* 54.78



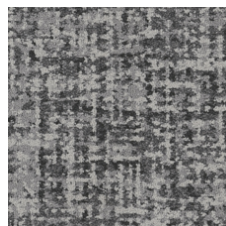
Muslin 79516
LRV 27.5 | L* 59.41



Mohair 79530
LRV 8.6 | L* 35.22



Wool 79535
LRV 13.6 | L* 43.63



Flax 79557
LRV 10.5 | L* 38.76



Angora 79596
LRV 7.2 | L* 32.26

Additional Information

**Manufactured in ISO 9001 certified facility. Meets or exceeds all local and national regulations in country of manufacture.

[Installation Guidelines](#)

[Maintenance Guidelines](#)

[15 Year Commercial Limited warranty](#)

Specifications are subject to nominal manufacturing variance. Material supply and/or manufacturing processes may necessitate changes without notice.

This product is an exclusive design and may not be duplicated in any manner. Use of this design in the creation of another product design is also strictly prohibited.

Visit shawcontract.com/testing for more information.

