

Coördinerende Producten

Carpet Tile: **Beam Comfortworx® Tile, Braid Comfortworx® Tile, Textile Comfortworx® Tile, Check Comfortworx® Tile, Houndstooth Taskworx® Tile, Check Taskworx® Tile, Jacquard Taskworx® Tile, Beam Taskworx® Tile, Braid Taskworx® Tile**

Kenmerken + Certificeringen

Certifications Below Apply Exclusively To The Carpet Tile Rug Itself And Not The Lokworx Tabs Adhesive

Declaration of Performance	EU.DOP/0493/CPR/0621/0422/BT
Cradle to Cradle gecertificeerd™	Bronzen Vlak (Versie 3.1)
Environmental Product Declaration (EPD)	3de Partij Gecertificeerd in Overeenstemming Met ISO14044, ISO14025 & EN15804
Embodied Carbon (Cradle to Gate)	4.37 kg CO ₂ /m ²
Life-Cycle Carbon Emissions	Carbon Neutral
Building Research Establishment (BRE)	A+ Health/A+ Retail 0.34/0.453 Ecopoints
milieugarantie	Terugnamebeleid Aangeboden Voor Alle Taskworx Producten
ISO 9001	Gecertificeerd
land van herkomst	Verenigd Koninkrijk
BREEAM Contribution Credit	Certificate of Approval Schools/Offices/Health/Industrial Shed Retail

Well V2 Contribution Credit

X08 Reductie gevaarlijke stoffen Deel 1: Beperking Optimalisatie Gevaarlijke Materialen - 1 pt	C2C Bronze Level (Version 3.1)
X10 Reductie van vluchtige stoffen Deel 1 (A): Beheer Vluchtige Organische Stoffen (VOS) Optimalisatie - 1 pt	C2C Bronze Level (Version 3.1)
X11 Langetermijn-emissiebeheersing - deel 2: Optimalisering van vloeren - 1 pt	M1> Emissions Class For Building Material
X13 Verbeterde materiaalvoorzorgsmaatregelen Deel 1: Optimaliseren van materiaalkeuze - max 2 punten	C2C Bronze Level (Version 3.1)
X14 Transparantie van materialen Deel 1: Optimalisatie: Bevorderen van ingrediëntenopenbaarmaking - max 2 punten	C2C Bronze Level (Version 3.1)

Groen Leed Bijdragekrediet

"MR-krediet: openbaarmaking en optimalisering van bouwproducten Milieuproductverklaringen - Optie 1: Milieuproductverklaring (EPD)"	3rd Party Certified in Accordance with ISO14044, ISO14025 & EN15804
"MR-krediet: Openbaarmaking en optimalisering van bouwproducten Materiaalingrediënten - Optie 1: Rapportage materiaalingrediënten"	C2C Bronze Level (Version 3.1)
"MR-krediet: openbaarmaking en optimalisering van bouwproducten Materiaalingrediënten - Optie 2: Optimalisering van materiaalingrediënten"	C2C Bronze Level (Version 3.1)

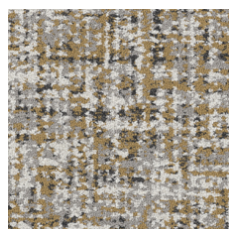
Air Quality

Indoor Air Comfort Gold	Certified
M1	Certified

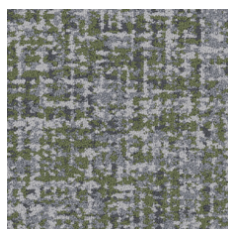
Memberships

WGBC Framework	WGBC Framework
UKGBC	UKGBC
Emirates Green Building Council	Emirates Green Building Council
Chemsec	Chemsec

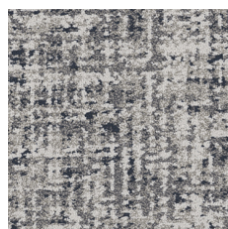
Lichtreflectiewaarde



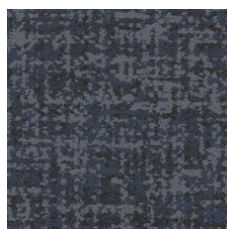
Saffron 79210
LRV 26.2 | L* 58.23



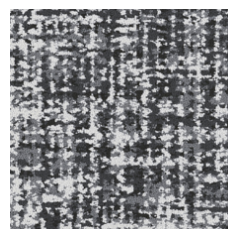
Bamboo 79375
LRV 14.7 | L* 45.17



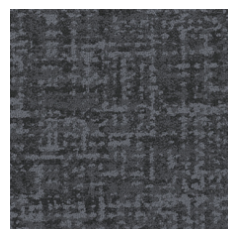
Denim 79485
LRV 18.6 | L* 50.22



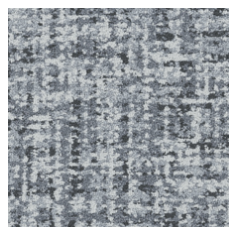
Indigo 79496
LRV 3 | L* 20.08



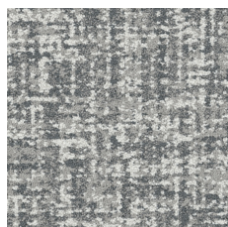
Merino 79500
LRV 15.3 | L* 46.02



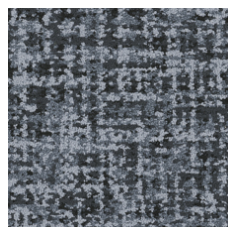
Patent 79505
LRV 3.1 | L* 20.59



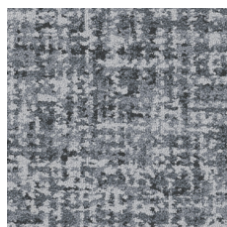
Cotton 79515
LRV 22.7 | L* 54.78



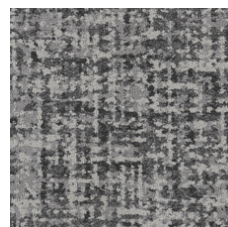
Muslin 79516
LRV 27.5 | L* 59.41



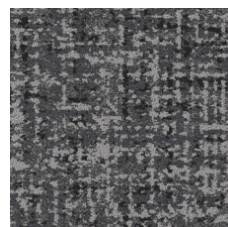
Mohair 79530
LRV 8.6 | L* 35.22



Wool 79535
LRV 13.6 | L* 43.63



Flax 79557
LRV 10.5 | L* 38.76



Angora 79596
LRV 7.2 | L* 32.26

Aanvullende Informatie

**Manufactured in ISO 9001 certified facility. Meets or exceeds all local and national regulations in country of manufacture.

[Installation Guidelines](#)

[Maintenance Guidelines](#)

[15 jaar commercieel beperkt](#)

Specifications are subject to nominal manufacturing variance. Material supply and/or manufacturing processes may necessitate changes without notice.

This product is an exclusive design and may not be duplicated in any manner. Use of this design in the creation of another product design is also strictly prohibited.

Visit shawcontract.com/testing for more information.



Corporate Headquarters +1 800 257 7429 | +1 706 532 7984 | Atlanta +1 404 853 7429 | Bengaluru +91 80 6773 0202 | Beijing +86 10 6568 588 | Chicago +1 312 467 1331 | Dubai +971 4 584 6956 | Hong Kong +852 2623 0371 | Latin America (Miami) +1 305 827 5912 | London +44 207 961 4120 | Los Angeles +1 800 233 1614 | Melbourne +61 3 9939 8543 | Mexico City +55 5010 7600 | Mumbai +91 22 6284 5050 | Nantong +86 400 800 7429 | New York +1 212 953 7429 | Paris +33 (0) 1 81 22 44 39 | San Francisco +1 415 955 1920 | Santiago +562 2431 5000 x 550 | São Paulo +55 11 3071 1702 | Shanghai +86 21 3338 4000 | Singapore +65 6733 1811 | Sydney +61 800 556 302

© 2024 Shaw Industries Group, Inc., a Berkshire Hathaway Company
December 22, 2024

3 of 3