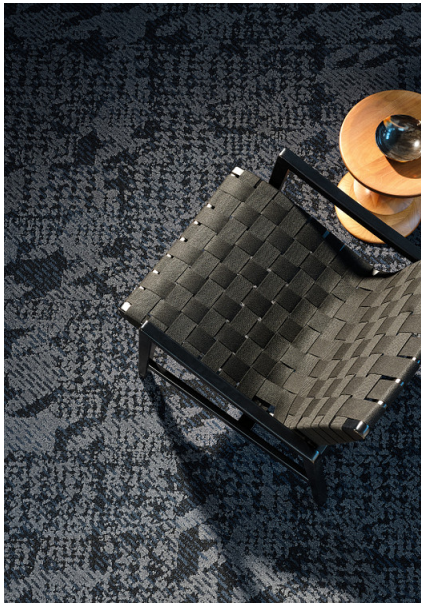




Houndstooth Taskworx® Tile

Numéro Du Style	5T289	
Collection	Suited	
Type De Produit	Dalles De Moquette	
Construction	Standard	Data + Performance
Type De Fabrication	ISO 2424	tufted 1/10" 39.4 per 10cm
Construction	ISO 2424	Tufté Structuré Bouclé à Motif
Méthode De Coloration	EN 994	100% Solution Teinte
Dimensions Du Produit	EN 994	50 cm x 100 cm 10 tiles (5 m²) per box
Sous-couche Primaire	ISO 2424	Pet Non-Woven
Sous-couche Secondaire	ISO 2424	Taskworx® Tile Bitume Modifié Par Polymère
Epaisseur Du Velours	ISO 1765	7.9 mm
Épaisseur Du Velours Fini	ISO 1766	2.2 mm
Poids Total	ISO 8543	4675 g/m²
Poids Tufté	ISO 2424	949 g/m²
Poids Du Velours Utile	ISO 8543	306 g/m²
Densité Du Velours	ISO 8543	0.136 g/cm³
Contenu Recyclé Total	46% (pre-consumer 46% post-consumer 0%)	

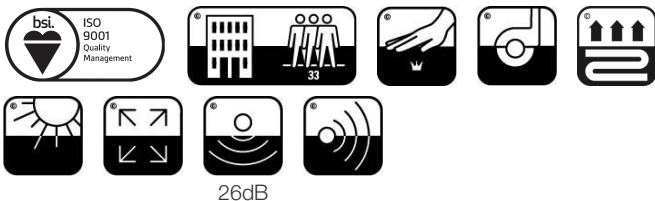
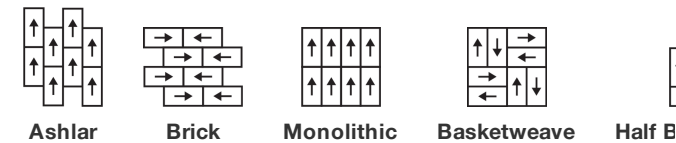


Données

Points	ISO 1763	142,000/m² 36.1 per 10cm
Traitements Protecteurs	SSP® Shaw Protection Du Sol	
Propension Electrostatique	ISO 6356	≤ 2.0 kv (Stroll Test)
Classification d'Utilisation	EN 1307	33 Commercial Heavy
Classification Luxe	EN 1307	LC1
Stabilité Dimensionnelle	EN 986	≤ 0.2%
Isolation Acoustique	ISO 10140	26db*
Classification d'Absorption Sonore	ISO 354/11654	0.20 Aw Class E*
Résistance Thermique m² K/w	ISO 8302	0.090 M² K/W Tog 0.90*
Dry Slip Resistance	ISO 13893	Pass/No Pulled Loops*
Résistance De La Couleur À La Lumière	ISO 105-B02	>6
Inflammabilité	EN 13501-1	Bfl-S1 (Adhered Testing)
Chaise À Roulette	EN 985	≥2.4 Continuous USE

Limitée Commerciale De 15 Ans subject to installation in full accordance with the manufacturer's instructions and a regular effective cleaning and maintenance programme. Second location warranties are available with the use of non-adhesive IOBAC Magtabs and Tabit accessories.

Méthodes d'Installation Conseillées



CE
17

EU.DOP/0493/CPR/0621/0422/BT
OOSTERHOUT SHOWROOM, VAARTWEG 10, 4905
BL NETHERLANDS (NLD)
Notified Body 2895

UK
CA
22

UK.DOP/0338/CPR/1220/0422/BT
SHAW EUROPE LIMITED BLACKADDIE RD,
SANQUHAR DG4 6DB, UNITED KINGDOM
Approved Body 0338

E1
HCHO

Bfl-s1

EN14041:2004/AC:2006
For use as an indoor floor covering as specified by the manufacturer

Coordination Des Produits

Carpet Tile: **Beam Comfortworx® Tile, Braid Comfortworx® Tile, Textile Comfortworx® Tile, Check Comfortworx® Tile, Houndstooth Comfortworx® Tile, Check Taskworx® Tile, Textile Taskworx® Tile, Jacquard Taskworx® Tile, Beam Taskworx® Tile, Braid Taskworx® Tile**

Attributs + Certifications

Certifications Below Apply Exclusively To The Carpet Tile Rug Itself And Not The Lokworx Tabs Adhesive

Declaration of Performance	EU.DOP/0493/CPR/0621/0422/BT
Certification Cradle to Cradle™ (C2C)	Bronze Level (Version 3.1)
Déclaration environnementale de produit (EPD)	Certifié Par Un Organisme Tiers Conformément Aux Normes ISO14044, ISO 14025 & EN15804
Embodied Carbon (Cradle to Gate)	4.37 kg CO ₂ /m ²
Life-Cycle Carbon Emissions	Carbon Neutral
Building Research Establishment (BRE)	A+ Health/A+ Retail 0.34/0.453 Ecopoints
garantie environnementale	Take Back Policy Offered For All Taskworx Products
ISO 9001	Certifié
pays d'origine	United Kingdom
BREEAM Contribution Credit	Certificate of Approval Schools/Offices/Health/Industrial Shed Retail

Well V2 Contribution Credit

X08 Réduction des matières dangereuses Partie 1 : Optimiser la limitation des matières dangereuses – 1 pt	C2C Bronze Level (Version 3.1)
X10 Réduction des composés volatils Partie 1 (A) : Optimisation de la gestion des composés organiques volatils (COV) – 1 pt	C2C Bronze Level (Version 3.1)
X11 Contrôle des émissions à long terme Partie 2 : Optimisation des revêtements de sol – 1 pt	M1> Emissions Class For Building Material
X13 Précaution accrue à l'égard des matériaux Partie 1 : Choisir des matériaux optimisés – max 2 pts	C2C Bronze Level (Version 3.1)
X14 Transparence des matériaux Partie 1 : Promouvoir l'optimisation de la divulgation des composants – max 2 pts	C2C Bronze Level (Version 3.1)

Contribution À La Certification Leed

MR Credit: Building Product Disclosure and Optimisation Environmental Product Declarations - Option 1: Environmental Product Declaration (EPD)	3rd Party Certified in Accordance with ISO14044, ISO14025 & EN15804
MR Credit: Building Product Disclosure and Optimisation Material Ingredients - Option 1: Material Ingredient Reporting	C2C Bronze Level (Version 3.1)
MR Credit: Building Product Disclosure and Optimisation Material Ingredients - Option 2: Material Ingredient Optimization	C2C Bronze Level (Version 3.1)
"Crédit EQ : matériaux faibles émissions Option 1 : calculs par catégorie de produit"	Certified

Air Quality

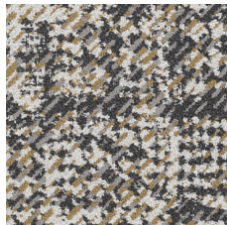
Indoor Air Comfort Gold	Certified
M1	Certified

Memberships

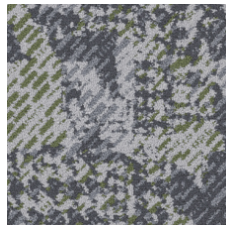
WGBC Framework
UKGBC
Emirates Green Building Council
Chemsec

WGBC Framework
UKGBC
Emirates Green Building Council
Chemsec

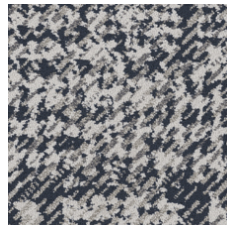
Indice De Réflexion Lumineuse



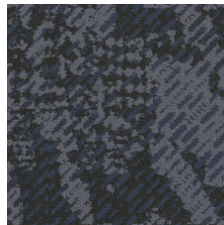
Saffron 79210
LRV 27 | L* 58.96



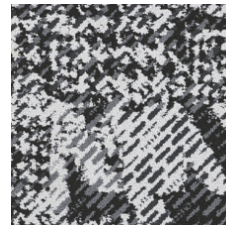
Bamboo 79375
LRV 12 | L* 41.16



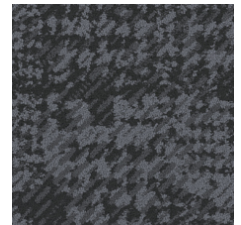
Denim 79485
LRV 16.5 | L* 47.67



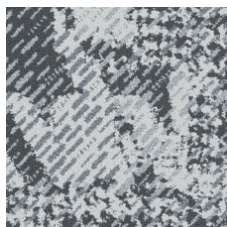
Indigo 79496
LRV 3.6 | L* 22.21



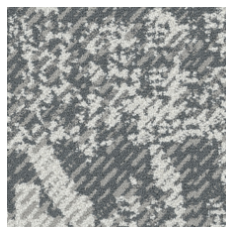
Merino 79500
LRV 18.8 | L* 50.45



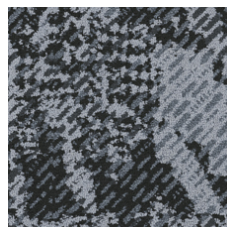
Patent 79505
LRV 3.4 | L* 21.74



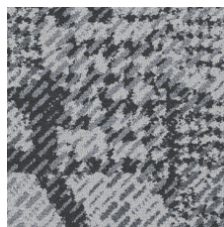
Cotton 79515
LRV 22.1 | L* 54.13



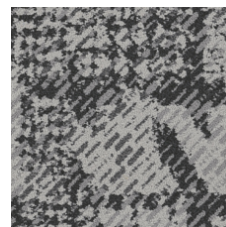
Muslin 79516
LRV 26.5 | L* 58.48



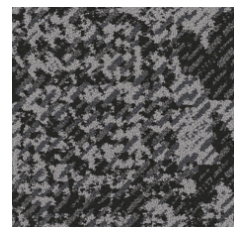
Mohair 79530
LRV 9.6 | L* 37.16



Wool 79535
LRV 15.9 | L* 46.79



Flax 79557
LRV 16.4 | L* 47.48



Angora 79596
LRV 6.6 | L* 30.76

Informations Supplémentaires

**Manufactured in ISO 9001 certified facility. Meets or exceeds all local and national regulations in country of manufacture.

[Installation Guidelines](#)

[Maintenance Guidelines](#)

[Limitée commerciale de 15 ans](#)

Specifications are subject to nominal manufacturing variance. Material supply and/or manufacturing processes may necessitate changes without notice.

This product is an exclusive design and may not be duplicated in any manner. Use of this design in the creation of another product design is also strictly prohibited.

Visit shawcontract.com/testing for more information.



Corporate Headquarters +1 800 257 7429 | +1 706 532 7984 | Atlanta +1 404 853 7429 | Bengaluru +91 80 6773 0202 | Beijing +86 10 6568 588 | Chicago +1 312 467 1331 | Dubai +971 4 584 6956 | Hong Kong +852 2623 0371 | London +44 207 961 4120 | Los Angeles +1 800 233 1614 | Melbourne +61 3 9939 8543 | Mexico City +55 5010 7600 | Mumbai +91 22 6284 5050 | Nantong +86 400 800 7429 | New York +1 212 953 7429 | Paris +33 (0) 1 81 22 44 39 | San Francisco +1 415 955 1920 | Shanghai +86 21 3338 4000 | Singapore +65 6733 1811 | Sydney +61 800 556 302

© 2025 Shaw Industries Group, Inc., a Berkshire Hathaway Company
April 19, 2025

3 of 3