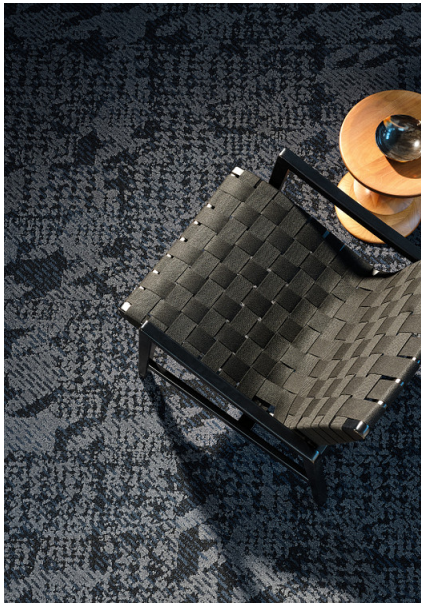




Houndstooth Taskworx® Tile

Stijlnummer	5T289	
Collectie	Suited	
Producttype	Tapijttegel	
Construction	Standard	Data + Performance
Type Fabricage	ISO 2424	tufted 1/10" 39.4 per 10cm
Uitzicht	ISO 2424	Multilevel-Patroonlus
Verfmethode	EN 994	100% In Oplossing Geverfd
Productformaat	EN 994	50 cm x 100 cm 10 tiles (5 m²) per box
Primaire Backing	ISO 2424	Pet Nonwoven
Secundaire Backing	ISO 2424	Taskworx® Tegel Polymeer Gemodificeerd Bitumen
Totale Dikte	ISO 1765	7.9 mm
Afgewerkte Pooldikte	ISO 1766	2.2 mm
Totale Massa	ISO 8543	4675 g/m²
Getuft Gewicht	ISO 2424	949 g/m²
Effectieve Poolmassa	ISO 8543	306 g/m²
Pooldichtheid	ISO 8543	0.136 g/cm³
Totaal Gerecycleerde Inhoud		68% (pre-consumer 68% post-consumer 0%)

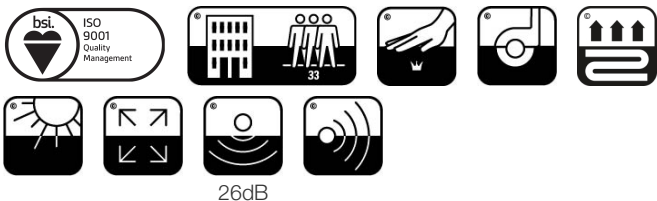
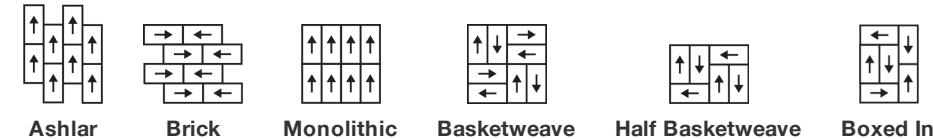


Gegevens

Steken	ISO 1763	142,000/m² 36.1 per 10cm
Beschermende Behandelingen		SSP® Shaw Grondbescherming
Elektrostatische Weerstand	ISO 6356	≤ 2.0 kv (Stroll Test)
Gebruik Classificatie	EN 1307	33 Commercial Heavy
Luxeklasse	EN 1307	LC1
Dimensionale Stabiliteit	EN 986	≤ 0.2%
Contactgeluidsisolatie	ISO 10140	26db*
Geluidsabsorptieclassificatie	ISO 354/11654	0.20 Aw Class E*
Warmteweerstand m² K/w	ISO 8302	0.090 M² K/W Tog 0.90*
Weerstand Tegen Droog Uitglijden	ISO 13893	Pass/No Pulled Loops*
Kleurvastheid Voor Licht	ISO 105-B02	>6
Ontvlambaarheid	EN 13501-1	Bfl-S1 (Adhered Testing)
Stoel Met Wieltjes	EN 985	≥2.4 Continuous Use

[15 Jaar Commercieel Beperkt](#) subject to installation in full accordance with the manufacturer's instructions and a regular effective cleaning and maintenance programme. Second location warranties are available with the use of non-adhesive IOBAC Magtabs and Tabit accessories.

Aanbevolen Installatiemethode



CE
17

EU.DOP/0493/CPR/0621/0422/BT
OOSTERHOUT SHOWROOM, VAARTWEG 10, 4905
BL NETHERLANDS (NLD)
Notified Body 2895

UK
CA
22

UK.DOP/0338/CPR/1220/0422/BT
SHAW EUROPE LIMITED BLACKADDIE RD,
SANQUHAR DG4 6DB, UNITED KINGDOM
Approved Body 0338

E1
HCHO

Bfl-s1

EN14041:2004/AC:2006
For use as an indoor floor covering as specified by the manufacturer

Coördinerende Producten

Carpet Tile: **Beam Comfortworx® Tile, Braid Comfortworx® Tile, Textile Comfortworx® Tile, Check Comfortworx® Tile, Check Taskworx® Tile, Textile Taskworx® Tile, Jacquard Taskworx® Tile, Beam Taskworx® Tile, Braid Taskworx® Tile**

Kenmerken + Certificeringen

Certifications Below Apply Exclusively To The Carpet Tile Rug Itself And Not The Lokworx Tabs Adhesive

Declaration of Performance	EU.DOP/0493/CPR/0621/0422/BT
Cradle to Cradle gecertificeerd™	Bronzen Vlak (Versie 3.1)
Environmental Product Declaration (EPD)	3de Partij Gecertificeerd in Overeenstemming Met ISO14044, ISO14025 & EN15804
Embodied Carbon (Cradle to Gate)	4.37 kg CO₂/m²
Life-Cycle Carbon Emissions	Carbon Neutral
Building Research Establishment (BRE)	A+ Health/A+ Retail 0.34/0.453 Ecopoints
milieugarantie	Terugnamebeleid Aangeboden Voor Alle Taskworx Producten
ISO 9001	Gecertificeerd
land van herkomst	Verenigd Koninkrijk
BREEAM Contribution Credit	Certificate of Approval Schools/Offices/Health/Industrial Shed Retail

Well V2 Contribution Credit

X08 Reductie gevaarlijke stoffen Deel 1: Beperking Optimalisatie Gevaarlijke Materialen - 1 pt	C2C Bronze Level (Version 3.1)
X10 Reductie van vluchtige stoffen Deel 1 (A): Beheer Vluchtige Organische Stoffen (VOS) Optimalisatie - 1 pt	C2C Bronze Level (Version 3.1)
X11 Langetermijn-emissiebeheersing - deel 2: Optimalisering van vloeren - 1 pt	M1> Emissions Class For Building Material
X13 Verbeterde materiaalvoorzorgsmaatregelen Deel 1: Optimaliseren van materiaalkeuze - max 2 punten	C2C Bronze Level (Version 3.1)
X14 Transparantie van materialen Deel 1: Optimalisatie: Bevorderen van ingrediëntenopenbaarmaking - max 2 punten	C2C Bronze Level (Version 3.1)

Groen Leed Bijdragekrediet

"MR-krediet: openbaarmaking en optimalisering van bouwproducten Milieuproductverklaringen - Optie 1: Milieuproductverklaring (EPD)"	3rd Party Certified in Accordance with ISO14044, ISO14025 & EN15804
"MR-krediet: Openbaarmaking en optimalisering van bouwproducten Materiaalingrediënten - Optie 1: Rapportage materiaalingrediënten"	C2C Bronze Level (Version 3.1)
"MR-krediet: openbaarmaking en optimalisering van bouwproducten Materiaalingrediënten - Optie 2: Optimalisering van materiaalingrediënten"	C2C Bronze Level (Version 3.1)

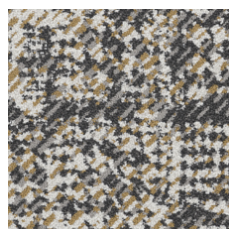
Air Quality

Indoor Air Comfort Gold	Certified
M1	Certified

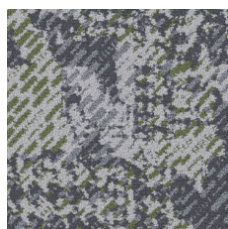
Memberships

WGBC Framework	WGBC Framework
UKGBC	UKGBC
Emirates Green Building Council	Emirates Green Building Council
Chemsec	Chemsec

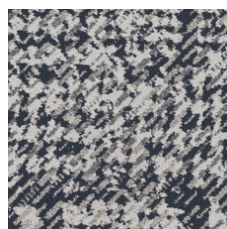
Lichtreflectiewaarde



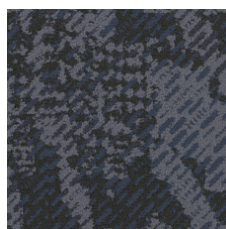
Saffron 79210
LRV 27 | L* 58.96



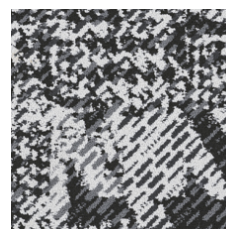
Bamboo 79375
LRV 12 | L* 41.16



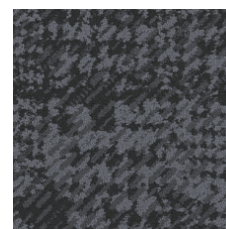
Denim 79485
LRV 16.5 | L* 47.67



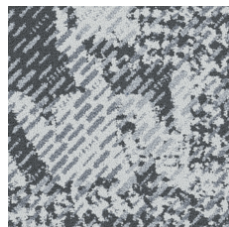
Indigo 79496
LRV 3.6 | L* 22.21



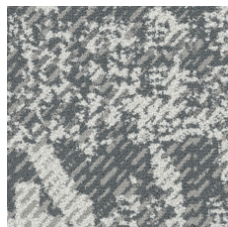
Merino 79500
LRV 18.8 | L* 50.45



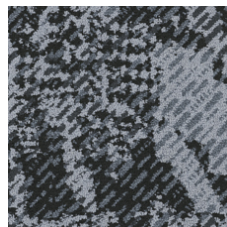
Patent 79505
LRV 3.4 | L* 21.74



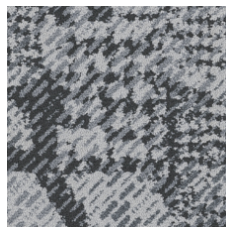
Cotton 79515
LRV 22.1 | L* 54.13



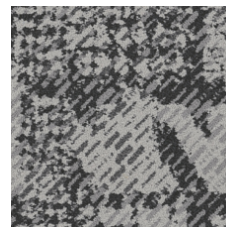
Muslin 79516
LRV 26.5 | L* 58.48



Mohair 79530
LRV 9.6 | L* 37.16



Wool 79535
LRV 15.9 | L* 46.79



Flax 79557
LRV 16.4 | L* 47.48



Angora 79596
LRV 6.6 | L* 30.76

Aanvullende Informatie

**Manufactured in ISO 9001 certified facility. Meets or exceeds all local and national regulations in country of manufacture.

[Installation Guidelines](#)

[Maintenance Guidelines](#)

15 jaar commercieel beperkt

Specifications are subject to nominal manufacturing variance. Material supply and/or manufacturing processes may necessitate changes without notice.

This product is an exclusive design and may not be duplicated in any manner. Use of this design in the creation of another product design is also strictly prohibited.

Visit shawcontract.com/testing for more information.

