

French Knot Tile

|                       |                                                                                                                                                                                                                             |
|-----------------------|-----------------------------------------------------------------------------------------------------------------------------------------------------------------------------------------------------------------------------|
| Product Type          | Carpet Tile                                                                                                                                                                                                                 |
| Collection            | Connected Threads                                                                                                                                                                                                           |
| Style Number          | 5T517                                                                                                                                                                                                                       |
| Construction          | Multi-Level Pattern Loop                                                                                                                                                                                                    |
| Fiber                 | Ecosolution Q100® Nylon                                                                                                                                                                                                     |
| Dye Method            | 100% Solution Dyed                                                                                                                                                                                                          |
| Primary Backing       | Synthetic                                                                                                                                                                                                                   |
| Secondary Backing     | Ecworx® Tile                                                                                                                                                                                                                |
| Protective Treatments | SSP® Shaw Soil Protection                                                                                                                                                                                                   |
| Recommended Adhesive  | LokDots, 3000 Carpet Tile 4 Gallon, 3000 Carpet Tile 1 Gallon, 4151 Multi-Use Carpet Tile 4 Gallon, 5000 Carpet Tile 1 Gallon, LokWorx Adhesive Tabs, 3800 Indoor Outdoor Carpet Tile 4 Gallon or 5000 Carpet Tile 4 Gallon |

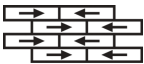
|                         |              |                |
|-------------------------|--------------|----------------|
|                         | u.s.         | metric         |
| Product Size            | 9 in x 36 in | 23 cm x 91 cm  |
| Area per Carton         | 45 ft²       | 4.18 m²        |
| Pieces per Carton       | 20 pcs       |                |
| Gauge                   | 1/12 in      | 47.2 per 10 cm |
| Stitches                | 8.5 per in   | 34.5 per 10 cm |
| Finished Pile Thickness | 0.115 in     | 2.92 mm        |
| Average Density         | 5948 oz/yd³  | 0.22 g/cm³     |
| Kilotex                 |              | 10.06          |
| Total Thickness         | 0.255 in     | 6.48 mm        |
| Tufted Weight           | 19 oz/yd²    | 644.2 g/m²     |



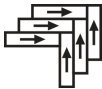
Recommended Installation Method



Ashlar



Brick



Herringbone



Monolithic



Stagger

Performance + Testing

|                            |                                                                                                              |
|----------------------------|--------------------------------------------------------------------------------------------------------------|
| Radiant Panel              | Class I                                                                                                      |
| NBS Smoke                  | Less Than 450                                                                                                |
| Electrostatic Propensity   | Less Than 3.5 kv                                                                                             |
| CRI Green Label Plus (GLP) | GLP9968                                                                                                      |
| Pill Test                  | Pass*                                                                                                        |
| ADA Compliance             | >0.6, meets the recommended static coefficient of friction for ADA walking surfaces and accessible routes*** |

Test Reports may be included or listed by the manufacturing/inventory style number as opposed to the noted selling style number.

Warranties

Lifetime Commercial Limited Warranty

Coordinating Products

Carpet Tile: **Hand Stitch Tile, Quilted Tile, Drop Stitch Strataworx® Tile, Knitted Strataworx® Tile, Pleated Strataworx® Tile**

Diversity & Inclusion

We promote supplier participation that is reflective of Shaw Industries' diverse customer base and local community. We believe having a strong Supplier Diversity Program is strategic for bringing more innovation to our businesses and opening new markets for growth.

Material Health & Environmental Certifications

Certifications below apply exclusively to the carpet tile rug itself and not the LokWorx Tabs adhesive

Health & Wellbeing

|                                         |                                                                                                                                                                                                                                                                                                        |
|-----------------------------------------|--------------------------------------------------------------------------------------------------------------------------------------------------------------------------------------------------------------------------------------------------------------------------------------------------------|
| Material Ingredient Transparency        | <b>Cradle to Cradle Certified®   Silver Level (Version 4.0)</b><br><b>Health Product Declaration (HPD)   1,000 ppm Disclosure</b><br><b>Living Building Challenge (LBC)   Free of Red List Chemicals</b><br><b>Declare   LBC Compliant</b><br><b>NSF 140   Gold</b>                                    |
| Indoor Air Quality                      | <b>CRI Green Label Plus (GLP)   GLP9968</b>                                                                                                                                                                                                                                                            |
| Climate Impact                          |                                                                                                                                                                                                                                                                                                        |
| Environmental Product Declaration (EPD) | <b>3rd Party Certified in Accordance with ISO14044, ISO14025 &amp; EN15804</b>                                                                                                                                                                                                                         |
| Embodied Carbon (Cradle to Gate)        | <b>3.73 kg CO<sub>2</sub>/m<sup>2</sup></b>                                                                                                                                                                                                                                                            |
| Life-Cycle Carbon Emissions             | <b>Carbon Neutral</b>                                                                                                                                                                                                                                                                                  |
| Total Recycled Content                  | <b>57% (Pre-Consumer 57%   Post-Consumer 0%)</b>                                                                                                                                                                                                                                                       |
| Product Packaging                       | <b>100% Recyclable</b>                                                                                                                                                                                                                                                                                 |
| Global Product Assessment               | <b>Singapore Green Label   Certified</b><br><b>CE Marking (EN 14041)   3rd Party Certified</b><br><b>Environmental Guarantee*   Re[turn] Reclamation Program*   Through Our Environmental Guarantee, Shaw Pledges to Transport And Recycle Any Ecoworx Carpet.</b><br><b>Country of Origin**   USA</b> |

WELL V2 Contribution Credit

|                                                                                                      |                                                |
|------------------------------------------------------------------------------------------------------|------------------------------------------------|
| X08 Hazardous Material Reduction<br>Part 1: Limit Hazardous Materials Optimization                   | <b>C2C Silver Level (Version 4.0)</b>          |
| X10 Volatile Compound Reduction<br>Part 1 (A): Manage Volatile Organic Compounds (VOCs) Optimization | <b>C2C Silver Level (Version 4.0)</b>          |
| X11 Long Term Emissions Control<br>Part 2: Flooring Optimization                                     | <b>Green Label Plus Certification: GLP9968</b> |
| X13 Enhanced Material Precaution<br>Part 1: Select Optimized Materials Optimization                  | <b>C2C Silver Level (Version 4.0)</b>          |
| X14 Material Transparency<br>Part 1: Promote Ingredient Disclosure Optimization                      | <b>C2C Silver Level (Version 4.0)</b>          |

## Leed v4 Contribution Credits

MR Credit: Building Product Disclosure and Optimization  
Environmental Product Declarations - Option 1: Environmental Product Declaration (EPD)

MR Credit: Building Product Disclosure and Optimization  
Material Ingredients - Option 1: Material Ingredient Reporting

MR Credit: Building Product Disclosure and Optimization  
Material Ingredients - Option 2: Material Ingredient Optimization

MR Credit: Building Product Disclosure and Optimization  
Sourcing of Raw Materials - Option 2: Leadership Extraction Practices

EQ Credit: Low Emitting Materials  
Option 1: Product Category Calculations

MR Credit: Interiors Life-Cycle Impact Reduction  
Option 3: Design for Flexibility

**3rd Party Certified in Accordance with ISO14044, ISO14025 & EN15804**

**C2C Silver Level (Version 4.0) or HPD (Version 2.1)**

**C2C Silver Level (Version 4.0)**

**Environmental Guarantee: Re[turn] Reclamation Program\* | Through Our Environmental Guarantee, Shaw Pledges to Transport And Recycle Any Ecoworx Carpet.**

**Green Label Plus Certification: GLP9968**

**Ecoworx Tile with Lokdots Installation System**

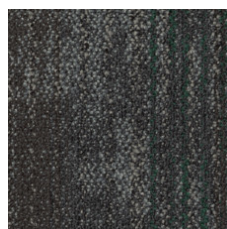
## Available Colorways



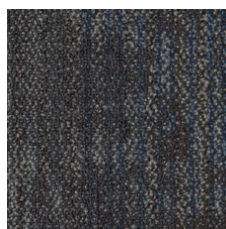
Cozy 16111



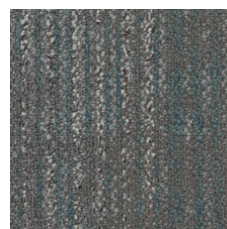
Mended 16500



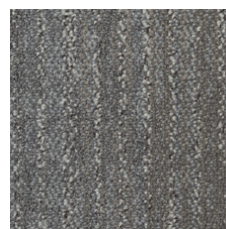
Mended Emerald 16503



Mended Denim 16504



Repurpose Teal 16554



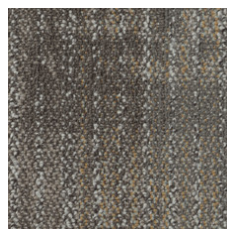
Repurpose 16555



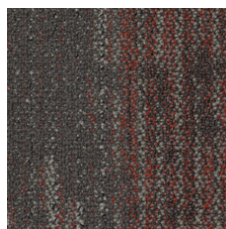
Vintage 16760



Heritage 16761



Vintage Gold 16762



Heritage Red 16768



Heritage Plum 16769

## Additional Information

\* To learn more about the recyclability of our products and our re[TURN], please visit [shawcontract.com/sustainability](https://shawcontract.com/sustainability).

\*\*Meets or exceeds all local and national regulations in country of manufacture.

\*\*\*This carpet is manufactured to be ADA compliant, but to be fully ADA compliant, the end-user must ensure the carpet is adhered to the floor and installed as outlined in the ADA standards.

[Installation Guidelines](#)

[Maintenance Guidelines](#)

Specifications are subject to nominal manufacturing variance. Material supply and/or manufacturing processes may necessitate changes without notice.

This product is an exclusive design and may not be duplicated in any manner. Use of this design in the creation of another product design is also strictly prohibited.

Visit [shawcontract.com/testing](https://shawcontract.com/testing) for more information.



**PVC-Free**

Corporate Headquarters +1 800 257 7429 | +1 706 532 7984 | Atlanta +1 404 853 7429 | Bengaluru +91 80 6773 0202 | Beijing +86 10 6568 588 | Chicago +1 312 467 1331 | Dubai +971 4 584 6956 | Hong Kong +852 2623 0371 | London +44 207 961 4120 | Los Angeles +1 800 233 1614 | Melbourne +61 3 9939 8543 | Mexico City +55 5010 7600 | Mumbai +91 22 6284 5050 | Nantong +86 400 800 7429 | New York +1 212 953 7429 | Paris +33 (0) 1 81 22 44 39 | San Francisco +1 415 955 1920 | Shanghai +86 21 3338 4000 | Singapore +65 6733 1811 | Sydney +61 800 556 302

© 2025 Shaw Industries Group, Inc., a Berkshire Hathaway Company  
July 17, 2025

3 of 3