

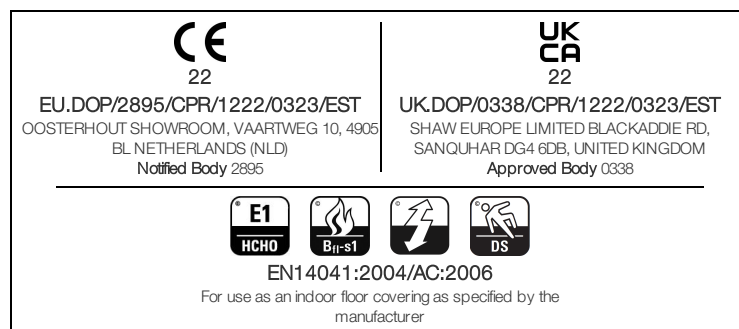
Stijlnummer	5T505	
Collectie	Floor Architecture III	
Producttype	Tapijttegels	
Construction	Standard	Data + Performance
Type Fabricage	ISO 2424	tufted 1/12" 47.2 per 10cm
Uitzicht	ISO 2424	Multilevel-Patroonlus
Vermethode	EN 994	100% In Oplossing Geverfd
Productformaat	EN 994	50 cm x 50 cm 20 tiles (5 m²) per box
Primaire Backing	ISO 2424	Pet Nonwoven
Secundaire Backing	ISO 2424	Ecoworx S® Polyolefin Plastomer
Totale Dikte	ISO 1765	5.5 mm
Afgewerkte Pooldikte	ISO 1766	1.7 mm
Totale Massa	ISO 8543	2632 g/m²
Getuft Gewicht	ISO 2424	634 g/m²
Effectieve Poolmassa	ISO 8543	207 g/m²
Pooldichtheid	ISO 8543	0.118 g/cm³
Totaal Gerecycleerde Inhoud		53% (pre-consumer 53% post-consumer 0%)



Steken	ISO 1763	188,000/m ² 40 per 10cm
Elektrostatische Weerstand	ISO 6356	≤ 2.0 kv (Stroll Test)
Gebruik Classificatie	EN 1307	33 Commercial Heavy
Luxeklasse	EN 1307	LC1
Dimensionale Stabiliteit	EN 986	≤ 0.2%
Contactgeluidsisolatie	ISO 10140	26 Db
Geluidsabsorptieclassificatie	ISO 354/11654	0.20 Aw Class E
Warmteweerstand m ² K/w	ISO 8302	0.065 M ² K/W Tog 0.65
Weerstand Tegen Droog Uitglijden	ISO 13893	Pass / No Pulled Loops
Kleurvastheid Voor Licht	ISO 105-B02	>6
Ontvlambaarheid	EN 13501-1	Bfl-S1 (Adhered Testing)
Stoel Met Wieltes	EN 985	>2.4 Continuous Use

The diagram illustrates five types of network topologies, each represented by a grid of nodes (squares) with arrows indicating the direction of connections between them:

- Monolithic:** A 2x2 grid where all four nodes are interconnected in a fully meshed manner.
- Quarter Turn:** A 2x2 grid where nodes are connected in a circular fashion, with each node connected to two other nodes (e.g., top-left to top-right and bottom-left).
- Brick:** A 2x3 grid where nodes are connected in a brickwork pattern, with horizontal connections within each row and vertical connections between corresponding nodes in adjacent columns.
- Ashlar:** A 2x3 grid where nodes are connected in a staggered pattern, with vertical connections within each column and horizontal connections between corresponding nodes in adjacent columns.
- Random:** A 2x3 grid where connections are made between nodes in a random, non-regular pattern.



Coördinerende Producten

Carpet Tile: **Stone Comfortworx® Tile, Fragment Comfortworx® Tile, Formation Colours Comfortworx® Tile, Fragment Colours Comfortworx® Tile, Stone Colours Comfortworx® Tile, Formation Comfortworx® Tile, Fragment Taskworx® Tile, Stone Taskworx® Tile, Formation Colours Ecoworx S® Tile, Formation Colours Taskworx® Tile, Fragment Colours Taskworx® Tile, Fragment Ecoworx S® Tile, Stone Ecoworx S® Tile, Formation Taskworx® Tile, Formation Ecoworx S® Tile, Stone Colours Taskworx® Tile, Stone Colours Ecoworx S® Tile**

Kenmerken + Certificeringen

Certifications Below Apply Exclusively To The Carpet Tile Rug Itself And Not The Lokworx Tabs Adhesive

Declaration of Performance

EU.DOP/2895/CPR/1222/0323/EST

Cradle to Cradle gecertificeerd™

Zilver Niveau (Versie 3.1)

Environmental Product Declaration (EPD)

3de Partij Gecertificeerd in Overeenstemming Met ISO 14044, ISO 14025 & EN15804

Embodied Carbon (Cradle to Gate)

4.14 kg CO₂/m²

Life-Cycle Carbon Emissions

Carbon Neutral

milieugarantie

Take Back Policy Offered For All Ecoworx S® Products

land van herkomst

Verenigd Koninkrijk

BREEAM Contribution Credit

**Certificate of Approval
Schools/Offices/Health/Industrial Shed
Retail**

Well V2 Contribution Credit

X08 Reductie gevaarlijke stoffen Deel 1: Beperking Optimalisatie Gevaarlijke Materialen - 1 pt

C2C Silver Level (Version 3.1)

X10 Reductie van vluchtige stoffen Deel 1 (A): Beheer Vluchtige Organische Stoffen (VOS) Optimalisatie - 1 pt

C2C Silver Level (Version 3.1)

X11 Langetermijn-emissiebeheersing - deel 2: Optimalisering van vloeren - 1 pt

M1> Emissions Class For Building Material

X13 Verbeterde materiaalvoorzorgsmaatregelen Deel 1: Optimaliseren van materiaalkeuze - max 2 punten

C2C Silver Level (Version 3.1)

X14 Transparantie van materialen Deel 1: Optimalisatie: Bevorderen van ingrediëntenopenbaarmaking - max 2 punten

C2C Silver Level (Version 3.1)

Groen Leed Bijdragekrediet

"MR-krediet: Openbaarmaking en optimalisering van bouwproducten Materiaalingrediënten - Optie 1: Rapportage materiaalingrediënten"

C2C Silver Level (Version 3.1)

"MR-krediet: openbaarmaking en optimalisering van bouwproducten Materiaalingrediënten - Optie 2: Optimalisering van materiaalingrediënten"

C2C Silver Level (Version 3.1)

Memberships

WGBC Framework

WGBC Framework

UKGBC

UKGBC

Emirates Green Building Council

Emirates Green Building Council

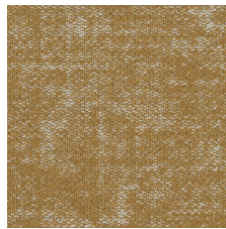
Chemsec

Chemsec

Lichtreflectiewaarde



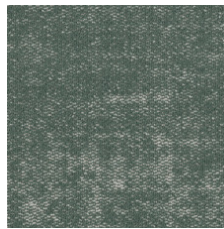
Oatmeal 04111
LRV 27 | L* 58.98



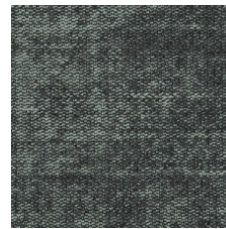
Brushed Gold 04210
LRV 22.4 | L* 54.44



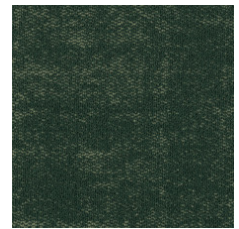
Midnight Brushed Gold
04211
LRV 6.9 | L* 31.52



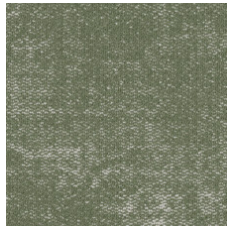
Mineral 04327
LRV 17.9 | L* 49.42



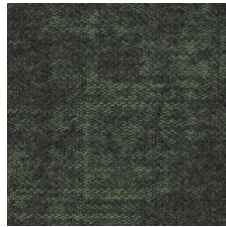
Midnight Mineral 04328
LRV 8.3 | L* 34.63



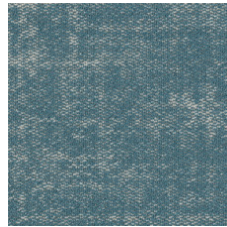
Racing Green 04334
LRV 5.3 | L* 27.67



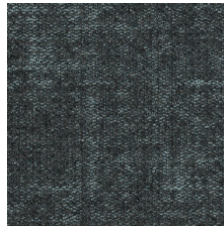
Sage 04375
LRV 19.3 | L* 51.02



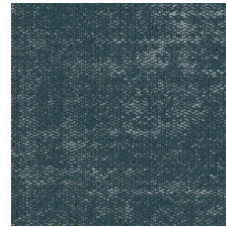
Midnight Sage 04376
LRV 6.4 | L* 30.37



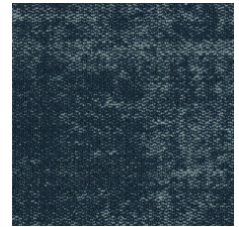
Sky 04411
LRV 18.8 | L* 50.5



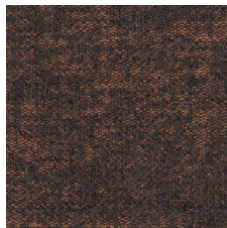
Midnight Sky 04412
LRV 6.8 | L* 31.43



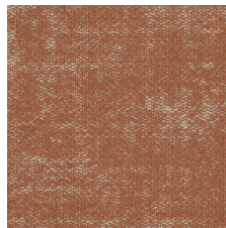
Steel Blue 04447
LRV 12.3 | L* 41.66



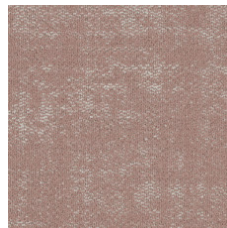
Denim 04486
LRV 5.2 | L* 27.29



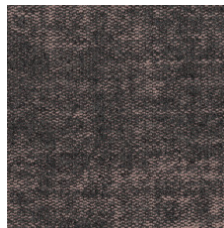
Midnight Apricot 04674
LRV 7 | L* 31.79



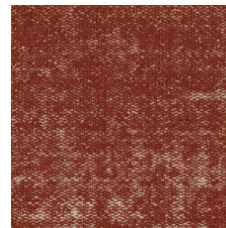
Apricot 04675
LRV 18.4 | L* 50.03



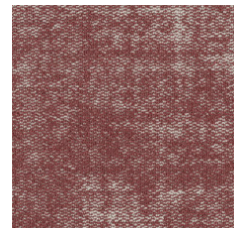
Powder Pink 04800
LRV 24.1 | L* 56.17



Midnight Powder Pink
04801
LRV 8.4 | L* 34.83



Copper 04865
LRV 12.1 | L* 41.43



Rosewood 04870
LRV 13.4 | L* 43.39

Aanvullende Informatie

**Manufactured in ISO 9001 certified facility. Meets or exceeds all local and national regulations in country of manufacture.

[Installation Guidelines](#)

[Maintenance Guidelines](#)

[lifetime commercial limited](#)

Specifications are subject to nominal manufacturing variance. Material supply and/or manufacturing processes may necessitate changes without notice.

This product is an exclusive design and may not be duplicated in any manner. Use of this design in the creation of another product design is also strictly prohibited.

Visit shawcontract.com/testing for more information.



Corporate Headquarters +1 800 257 7429 | +1 706 532 7984 | Atlanta +1 404 853 7429 | Bengaluru +91 80 6773 0202 | Beijing +86 10 6568 588 | Chicago +1 312 467 1331 | Dubai +971 4 584 6956 | Hong Kong +852 2623 0371 | London +44 207 961 4120 | Los Angeles +1 800 233 1614 | Melbourne +61 3 9939 8543 | Mexico City +55 5010 7600 | Mumbai +91 22 6284 5050 | Nantong +86 400 800 7429 | New York +1 212 953 7429 | Paris +33 (0) 1 81 22 44 39 | San Francisco +1 415 955 1920 | Shanghai +86 21 3338 4000 | Singapore +65 6733 1811 | Sydney +61 800 556 302

© 2025 Shaw Industries Group, Inc., a Berkshire Hathaway Company
July 18, 2025

3 of 3