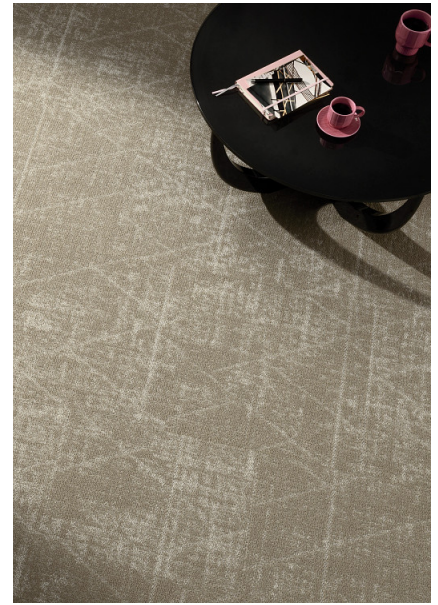
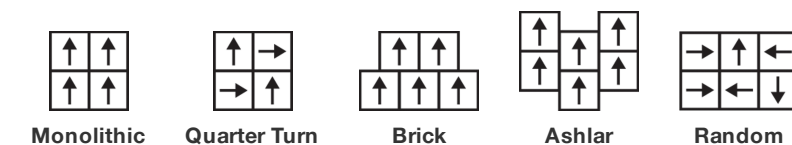


Style Number	5T504	
Collection	Floor Architecture III	
Product Type	Carpet Tile	
Construction	Standard	Data + Performance
Type of Manufacture	ISO 2424	tufted 1/12"   47.2 per 10cm
Aspect	ISO 2424	Multi-Level Pattern Loop
Dye Method	EN 994	100% Solution Dyed
Dimensions	EN 994	50 cm x 50 cm   20 tiles (5 m²) per box
Primary Backing	ISO 2424	Pet Non-Woven
Secondary Backing	ISO 2424	Ecoworx S® Polyolefin Plastomer
Pile Fibre Composition	ISO 2424	Eco Solution Q100® Polyamide 6   Contains 100% Recycled Content
Total Thickness	ISO 1765	5.8 mm
Effective Pile Thickness	ISO 1766	2.1 mm
Total Mass	ISO 8543	2736 g/m²
Nominal Total Pile Mass	ISO 2424	670 g/m²
Effective Pile Mass	ISO 8543	235 g/m²
Pile Density	ISO 8543	0.113 g/cm³
Total Recycled Content		53% (pre-consumer 53%   post-consumer 0%)



Number of Tufts	ISO 1763	193,000/m²   41 per 10cm
Electrostatic Propensity	ISO 6356	≤ 2.0 kv (Stroll Test)
Use Classification	EN 1307	33 Commercial Heavy
Luxury Class	EN 1307	LC1
Dimensional Stability	EN 986	≤ 0.2%
Impact Sound Insulation	ISO 10140	26 Db
Sound Absorption Classification	ISO 354/11654	0.20 Aw   Class E
Thermal Resistance m² K/W	ISO 8302	0.067 M² K/W Tog 0.67
Dry Slip Resistance	ISO 13893	Pass / No Pulled Loops
Colour Fastness To Light	ISO 105-B02	>6
Flammability	EN 13501-1	Bfl-S1 (Adhered Testing)
Castor Chair	EN 985	≥2.4 Continuous USE

## Recommended Installation Method



<p><b>CE</b> 22</p> <p>EU.DOP/2895/CPVR/1222/0323/EST</p> <p>OOSTERHOUT SHOWROOM, VAARTWEG 10, 4905 BL, NETHERLANDS (NLD)</p> <p>Notified Body 2895</p>	<p><b>UK CA</b> 22</p> <p>UK.DOP/0338/CPVR/1222/0323/EST</p> <p>SHAW EUROPE LIMITED BLACKADDIE RD, SANQUHAR DG4 6DB, UNITED KINGDOM</p> <p>Approved Body 0338</p>
-----------------------------------------------------------------------------------------------------------------------------------------------------------------	-------------------------------------------------------------------------------------------------------------------------------------------------------------------------------

Coordinating Products

Carpet Tile: **Stone Comfortworx® Tile, Fragment Comfortworx® Tile, Formation Colours Comfortworx® Tile, Fragment Colours Comfortworx® Tile, Stone Colours Comfortworx® Tile, Formation Comfortworx® Tile, Fragment Taskworx® Tile, Stone Taskworx® Tile, Fragment Colours Ecoworx S® Tile, Formation Colours Taskworx® Tile, Fragment Colours Taskworx® Tile, Fragment Ecoworx S® Tile, Stone Ecoworx S® Tile, Formation Taskworx® Tile, Formation Ecoworx S® Tile, Stone Colours Taskworx® Tile, Stone Colours Ecoworx S® Tile**

Product Transparency

Shaw Contract is dedicated to providing clients with a building chemistry that's safe and dependable. Working together, we will help you meet your goals as they pertain to material health. Ecoworx S® products are Cradle to Cradle Certified® Silver and assessed for impacts on human health and the environment. This product can be recycled. When it's time to replace, we can collect through our re-[TURN] scheme in EMEA.

Material Health & Environmental Certifications

Certifications below apply exclusively to the carpet tile rug itself and not the LokWorx Tabs adhesive

Declaration of Performance	EU.DOP/2895/CPR/1222/0323/EST
Cradle to Cradle Certified®	Silver Level (Version 3.1)
Environmental Product Declaration (EPD)	3rd Party Certified in Accordance with ISO14044, ISO14025 & EN15804
Embodied Carbon (Cradle to Gate)	4.21 kg CO <sub>2</sub> /m <sup>2</sup>
Life-Cycle Carbon Emissions	Carbon Neutral
Environmental Guarantee*	Take Back Policy Offered For All Ecoworx S® Products
Country of Origin**	United Kingdom
BREEAM Contribution Credit	Certificate of Approval Schools/Offices/Health/Industrial Shed Retail

WELL V2 Contribution Credit

X08 Hazardous Material Reduction Part 1: Limit Hazardous Materials Optimization	C2C Silver Level (Version 3.1)
X10 Volatile Compound Reduction Part 1 (A): Manage Volatile Organic Compounds (VOCs) Optimization	C2C Silver Level (Version 3.1)
X11 Long Term Emissions Control Part 2: Flooring Optimization	M1> Emissions Class For Building Material
X13 Enhanced Material Precaution Part 1: Select Optimized Materials Optimization	C2C Silver Level (Version 3.1)
X14 Material Transparency Part 1: Promote Ingredient Disclosure Optimization	C2C Silver Level (Version 3.1)

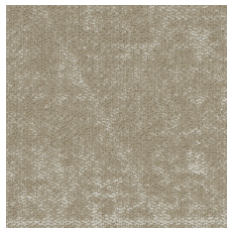
Leed v4 Contribution Credits

MR Credit: Building Product Disclosure and Optimization Material Ingredients - Option 1: Material Ingredient Reporting	C2C Silver Level (Version 3.1)
MR Credit: Building Product Disclosure and Optimization Material Ingredients - Option 2: Material Ingredient Optimization	C2C Silver Level (Version 3.1)

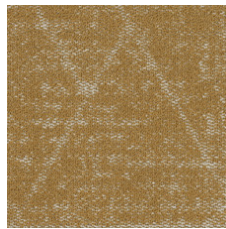
Memberships

WGBC Framework	WGBC Framework
UKGBC	UKGBC
Emirates Green Building Council	Emirates Green Building Council
Chemsec	Chemsec

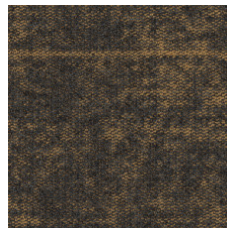
### Light Reflectance Value



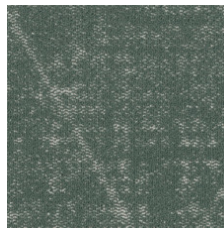
Oatmeal 04111  
LRV 26.9 | L\* 58.91



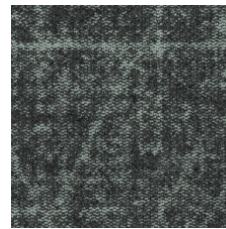
Brushed Gold 04210  
LRV 20.8 | L\* 52.78



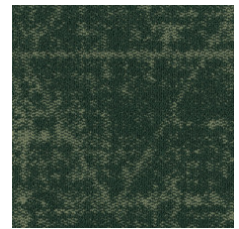
Midnight Brushed Gold  
04211  
LRV 7 | L\* 31.86



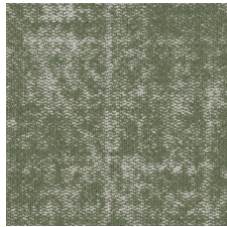
Mineral 04327  
LRV 18.5 | L\* 50.09



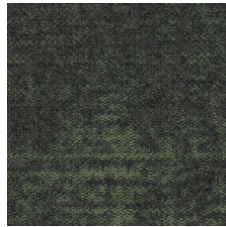
Midnight Mineral 04328  
LRV 10.7 | L\* 39.05



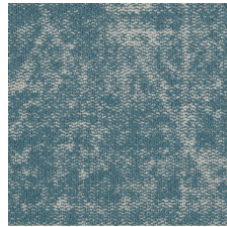
Racing Green 04334  
LRV 5.5 | L\* 28.23



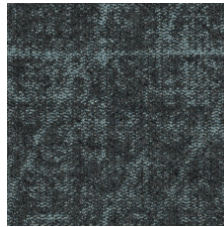
Sage 04375  
LRV 17.4 | L\* 48.8



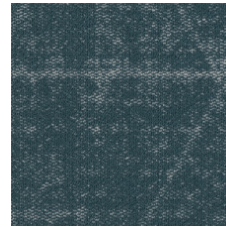
Midnight Sage 04376  
LRV 6.3 | L\* 30.22



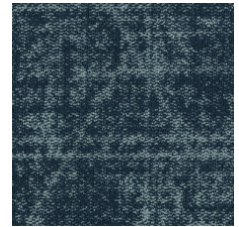
Sky 04411  
LRV 18.8 | L\* 50.51



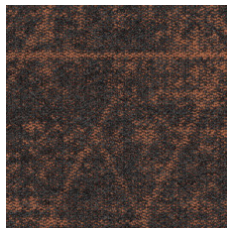
Midnight Sky 04412  
LRV 6.5 | L\* 30.61



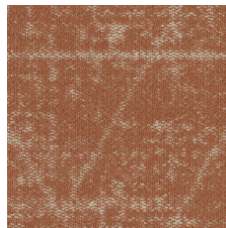
Steel Blue 04447  
LRV 12 | L\* 41.21



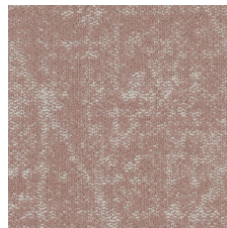
Denim 04486  
LRV 4.8 | L\* 26.26



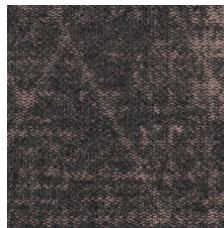
Midnight Apricot 04674  
LRV 6.3 | L\* 30.22



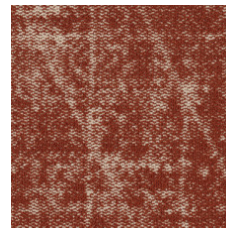
Apricot 04675  
LRV 20.2 | L\* 52.09



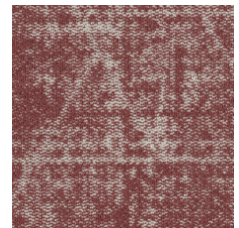
Powder Pink 04800  
LRV 25.5 | L\* 57.57



Midnight Powder Pink  
04801  
LRV 7.1 | L\* 32.02



Copper 04865  
LRV 9.8 | L\* 37.41



Rosewood 04870  
LRV 12.6 | L\* 42.16

### Additional Information

\*\*Manufactured in ISO 9001 certified facility. Meets or exceeds all local and national regulations in country of manufacture.

[Installation Guidelines](#)

[Maintenance Guidelines](#)

[lifetime commercial limited](#)

Specifications are subject to nominal manufacturing variance. Material supply and/or manufacturing processes may necessitate changes without notice.

This product is an exclusive design and may not be duplicated in any manner. Use of this design in the creation of another product design is also strictly prohibited.

Visit [shawcontract.com/testing](http://shawcontract.com/testing) for more information.

