



Upbeat Ecoworx S® Tile

Style Number	5T509	
Collection	New Path	
Product Type	Carpet Tile	
Construction	Standard	Data + Performance
Type of Manufacture	ISO 2424	tufted 1/10"   39.4 per 10cm
Aspect	ISO 2424	Multi-Level Pattern Loop
Dye Method	EN 994	100% Solution Dyed
Dimensions	EN 994	50 cm x 50 cm   20 tiles (5 m²) per box
Primary Backing	ISO 2424	Pet Non-Woven
Secondary Backing	ISO 2424	Ecoworx S® Polyolefin Plastomer
Pile Fibre Composition	ISO 2424	Eco Solution Q100® Polyamide 6   Contains 100% Recycled Content
Total Thickness	ISO 1765	5.5 mm
Effective Pile Thickness	ISO 1766	1.9 mm
Total Mass	ISO 8543	2272 g/m²
Nominal Total Pile Mass	ISO 2424	640 g/m²
Effective Pile Mass	ISO 8543	236 g/m²
Pile Density	ISO 8543	0.124 g/cm³
Total Recycled Content		53% (pre-consumer 53%   post-consumer 0%)

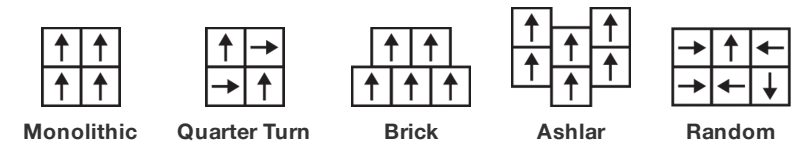


Performance

Number of Tufts	ISO 1763	169,000/m²   43 per 10cm
Electrostatic Propensity	ISO 6356	≤ 2.0 kv (Stroll Test)
Use Classification	EN 1307	33 Commercial Heavy
Luxury Class	EN 1307	LC1
Dimensional Stability	EN 986	≤ 0.2%
Impact Sound Insulation	ISO 10140	26 Db
Sound Absorption Classification	ISO 354/11654	0.20 Aw   Class E
Thermal Resistance m² K/W	ISO 8302	0.069 M² K/W Tog 0.69
Dry Slip Resistance	ISO 13893	Pass / No Pulled Loops
Colour Fastness To Light	ISO 105-B02	>6
Flammability	EN 13501-1	Bfl-S1 (Adhered Testing)
Castor Chair	EN 985	≥2.4 Continuous Use

Lifetime Commercial Limited subject to installation in full accordance with the manufacturer's instructions and a regular effective cleaning and maintenance programme. Second location warranties are available with the use of non-adhesive IOBAC Magtabs and Tabit accessories.

Recommended Installation Method



22

EU.DOP/2895/CPR/1222/0323/EST

OOSTERHOUT SHOWROOM, VAARTWEG 10, 4905  
BL NETHERLANDS (NLD)

Notified Body 2895

22

UK.DOP/0338/CPR/1222/0323/EST

SHAW EUROPE LIMITED BLACKADDIE RD,  
SANQUHAR DG4 6DB, UNITED KINGDOM

Approved Body 0338

EN14041:2004/AC:2006

For use as an indoor floor covering as specified by the manufacturer

Coordinating Products

Carpet Tile: **Positive Ecoworx S® Tile, Poised Ecoworx S® Tile**

Product Transparency

Shaw Contract is dedicated to providing clients with a building chemistry that's safe and dependable. Working together, we will help you meet your goals as they pertain to material health. Ecoworx S® products are Cradle to Cradle Certified® Silver and assessed for impacts on human health and the environment. This product can be recycled. When it's time to replace, we can collect through our re-[TURN] scheme in EMEA.

Material Health & Environmental Certifications

Certifications below apply exclusively to the carpet tile rug itself and not the LokWorx Tabs adhesive

Declaration of Performance	<b>EU.DOP/2895/CPR/1222/0323/EST</b>
Cradle to Cradle Certified®	<b>Silver Level (Version 3.1)</b>
Health Product Declaration (HPD)	<b>1000 ppm Disclosure</b>
Environmental Product Declaration (EPD)	<b>3rd Party Certified in Accordance with ISO14044, ISO14025 &amp; EN15804</b>
Embodied Carbon (Cradle to Gate)	<b>4.14 kg CO<sub>2</sub>/m<sup>2</sup></b>
Life-Cycle Carbon Emissions	<b>Carbon Neutral</b>
Environmental Guarantee*	<b>Take Back Policy Offered For All Ecoworx S® Products</b>
Country of Origin**	<b>United Kingdom</b>
BREEAM Contribution Credit	<b>Certificate of Approval Schools/Offices/Health/Industrial Shed Retail</b>

WELL V2 Contribution Credit

X08 Hazardous Material Reduction Part 1: Limit Hazardous Materials Optimization	<b>C2C Silver Level (Version 3.1)</b>
X10 Volatile Compound Reduction Part 1 (A): Manage Volatile Organic Compounds (VOCs) Optimization	<b>C2C Silver Level (Version 3.1)</b>
X11 Long Term Emissions Control Part 2: Flooring Optimization	<b>M1&gt; Emissions Class For Building Material</b>
X13 Enhanced Material Precaution Part 1: Select Optimized Materials Optimization	<b>C2C Silver Level (Version 3.1)</b>
X14 Material Transparency Part 1: Promote Ingredient Disclosure Optimization	<b>C2C Silver Level (Version 3.1)</b>

Leed v4 Contribution Credits

MR Credit: Building Product Disclosure and Optimization Material Ingredients - Option 1: Material Ingredient Reporting	<b>C2C Silver Level (Version 3.1)</b>
MR Credit: Building Product Disclosure and Optimization Material Ingredients - Option 2: Material Ingredient Optimization	<b>C2C Silver Level (Version 3.1)</b>
EQ Credit: Low Emitting Materials Option 1: Product Category Calculations	<b>Certified</b>

Air Quality

Indoor Air Comfort Gold	<b>Certified</b>
M1	<b>Certified</b>

## Memberships

WGBC Framework  
UKGBC  
Emirates Green Building Council  
Chemsec

WGBC Framework  
UKGBC  
Emirates Green Building Council  
Chemsec

## Light Reflectance Value



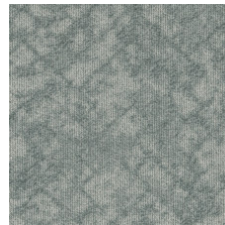
Bubbly 10100  
LRV 30.8 | L\* 62.38



Warmth 10101  
LRV 33.3 | L\* 64.42



Optimistic 10210  
LRV 24.6 | L\* 56.67



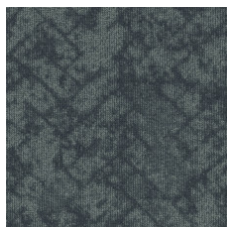
Considered 10327  
LRV 29.2 | L\* 60.93



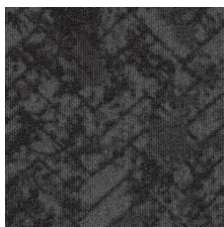
Observe 10375  
LRV 8.8 | L\* 35.6



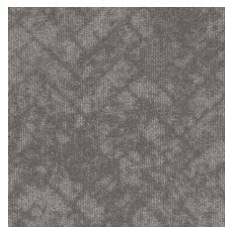
Enthusiasm 10411  
LRV 30.1 | L\* 61.71



Confident 10480  
LRV 10.3 | L\* 38.42



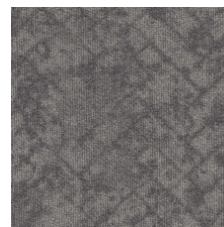
Contemplate 10500  
LRV 5.9 | L\* 29.09



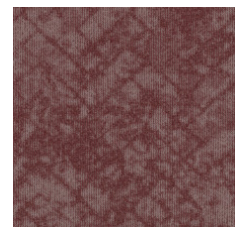
Satisfied 10515  
LRV 16.4 | L\* 47.52



Solace 10580  
LRV 13.9 | L\* 44.05



Grateful 10760  
LRV 14 | L\* 44.28



Cheeky 10870  
LRV 11.9 | L\* 41.13

## Additional Information

\*\*Manufactured in ISO 9001 certified facility. Meets or exceeds all local and national regulations in country of manufacture.

[Installation Guidelines](#)

[Maintenance Guidelines](#)

[lifetime commercial limited](#)

Specifications are subject to nominal manufacturing variance. Material supply and/or manufacturing processes may necessitate changes without notice.

This product is an exclusive design and may not be duplicated in any manner. Use of this design in the creation of another product design is also strictly prohibited.

Visit [shawcontract.com/testing](http://shawcontract.com/testing) for more information.



Corporate Headquarters +1 800 257 7429 | +1 706 532 7984 | Atlanta +1 404 853 7429 | Bengaluru +91 80 6773 0202 | Beijing +86 10 6568 588 | Chicago +1 312 467 1331 | Dubai +971 4 584 6956 | Hong Kong +852 2623 0371 | London +44 207 961 4120 | Los Angeles +1 800 233 1614 | Melbourne +61 3 9939 8543 | Mexico City +55 5010 7600 | Mumbai +91 22 6284 5050 | Nantong +86 400 800 7429 | New York +1 212 953 7429 | Paris +33 (0) 1 81 22 44 39 | San Francisco +1 415 955 1920 | Shanghai +86 21 3338 4000 | Singapore +65 6733 1811 | Sydney +61 800 556 302

© 2025 Shaw Industries Group, Inc., a Berkshire Hathaway Company  
May 9, 2025

3 of 3