

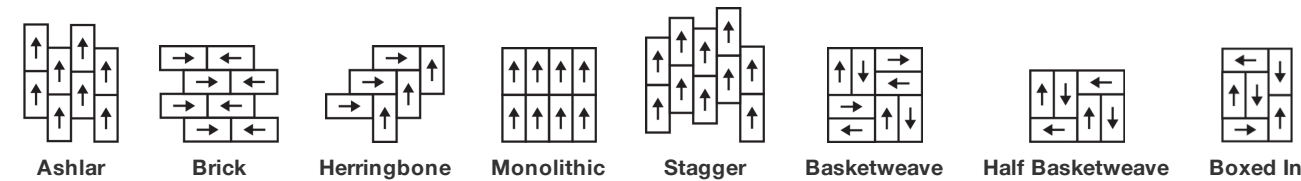
Sierra Tile

Tipo De Producto	Alfombra Modular
Colección	Cultura
Número De Estilo	5T524
Construcción	Patrón Multi Niveles Cortado/Buclé
Método De Teñido	100% Solution Dyed
Base Secundaria	Base Ecoworx®
Tratamientos Protectores	SSP® Shaw Protección Para El Piso
Adhesivo Recomendado	LokDots, 3000 Carpet Tile 4 Gallon, 3000 Carpet Tile 1 Gallon, 4151 Multi-Use Carpet Tile 4 Gallon, 5000 Carpet Tile 1 Gallon, LokWorx Adhesive Tabs, 3800 Indoor Outdoor Carpet Tile 4 Gallon or 5000 Carpet Tile 4 Gallon

	u.s.	metric
Tamaño Del Producto	18 in x 36 in	46 cm x 91 cm
Área Por Caja	45 ft²	4.18 m²
Piezas Por Caja	10 pcs	
Gauge	1/10 in	39.4 per 10 cm
Puntadas	9.0 per in	36.5 per 10 cm
Espesor De La Fibra Terminada	0.134 in	3.4 mm
Densidad Media	6448 oz/yd³	0.239 g/cm³
Kilotex		8.69
Espesor Total	0.315 in	8 mm
Peso De La Fibra	24 oz/yd²	813.7 g/m²



Método De Instalación Recomendado



Datos + Pruebas

Panel Radiante (Astm E648)	Class I
Nbs Humo	Less Than 450
Propensión Electrostática	Less Than 3.5 kv
Cri Green Label Plus (Glp)	GLP9968
Prueba De Pastillas (Pill)	Pass*
Ada Compliance	≥0.6, Cumple con las recomendaciones para el coeficiente de fricción estática para superficies transitables ADA y rutas accesibles***

Test Reports may be included or listed by the manufacturing/inventory style number as opposed to the noted selling style number.

Garantías

Vitalicio Limitado A USO Comercial

Productos Que Combinan

LVT: **In Unison 5.0, Crossing Paths 5.0, In Unison 2.5, Crossing Paths 2.5**
Carpet Tile: **Alban Tile, Hand Woven Tile, Local Tile, Casa Tile, Cross Weave Tile**
Broadloom: **Braided Broadloom, Valle Broadloom**

Atributos + Certificaciones

Certifications Below Apply Exclusively To The Carpet Tile Rug Itself And Not The Lokworx Tabs Adhesive

Health & Wellbeing

Material Ingredient Transparency

Cradle to Cradle Certified® | Silver Level (Version 4.0)
Health Product Declaration (HPD) | Divulgado 1,000 ppm
Living Building Challenge (LBC) | Libre De Químicos Red List
Declare | Compatible LBC
NSF 140 | Oro

Indoor Air Quality

CRI Green Label Plus (GLP) | GLP9968

Climate Impact

Environmental Product Declaration (EPD)

Certificado Tercerizado De Acuerdo Con La Norma ISO14044, ISO14025 & EN15804

Embodied Carbon (Cradle to Gate)

3.83 kg CO₂/m²

Life-Cycle Carbon Emissions

Carbon Neutral

Total Recycled Content

59% (Pre-Consumer 59% | Post-Consumer 0%)

Product Packaging

100% Recyclable

Global Product Assessment

Singapore Green Label | Certificado
CE Marking (EN 14041) | Certificado Tercerizado
Environmental Guarantee* | Re[turn] Reclamation Program* | Through Our Environmental Guarantee, Shaw Pledges to Transport And Recycle Any Ecoworx Carpet.
Country of Origin | Imported**

Well V2 Contribution Credit

X08 Hazardous Material Reduction Part 1: Limit Hazardous Materials Optimization – 1 pt
X10 Volatile Compound Reduction Part 1 (A): Manage Volatile Organic Compounds (VOCs) Optimization – 1 pt
X11 Long Term Emissions Control Part 2: Flooring Optimization – 1 pt
X13 Enhanced Material Precaution Part 1: Select Optimized Materials Optimization – max 2 pts
X14 Material Transparency Part 1: Promote Ingredient Disclosure Optimization – max 2 pts

C2C Silver Level (Version 4.0)
C2C Silver Level (Version 4.0)
Green Label Plus Certification: GLP9968
C2C Silver Level (Version 4.0)
C2C Silver Level (Version 4.0)

Contribución Para Créditos Leed

Crédito MR: Divulgación y optimización de productos de construcción
Declaraciones ambientales de productos - Opción 1: Declaración ambiental de productos (EPD)

Crédito MR: Divulgación y optimización de productos de construcción
Ingredientes de materiales - Opción 1: Informe de ingredientes de los materiales

Crédito MR: Divulgación y optimización de productos de construcción
Ingredientes de materiales - Opción 2: Optimización de ingredientes de los materiales

Crédito MR: Divulgación y optimización de productos de construcción
Abastecimiento de materias primas - Opción 2: Prácticas en liderazgo de extracción

Crédito EQ: Materiales de baja emisión
Opción 1: Cálculos de categoría de producto

MR Credit: Interiors Life-Cycle Impact Reduction
Option 3: Design for Flexibility

3rd Party Certified in Accordance with ISO14044, ISO14025 & EN15804

C2C Silver Level (Version 4.0) or HPD (Version 2.1)

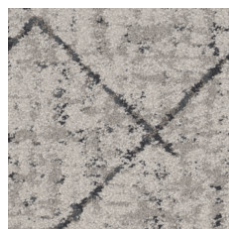
C2C Silver Level (Version 4.0)

Environmental Guarantee: Re[turn] Reclamation Program* | Through Our Environmental Guarantee, Shaw Pledges to Transport And Recycle Any Ecoworx® Carpet.

Green Label Plus Certification: GLP9968

Ecoworx® Tile with Lokdots Installation System

Available Colorways



Cobblestone 21100
LRV 37.6 | L* 67.74



Native 21105
LRV 37.9 | L* 67.97



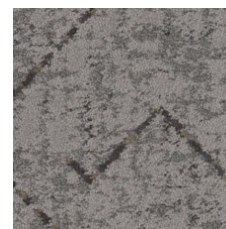
Maiz 21111
LRV 41.6 | L* 70.6



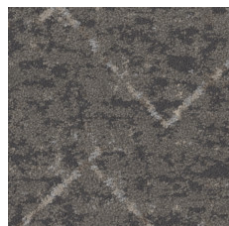
Mole 21505
LRV 4.8 | L* 26.2



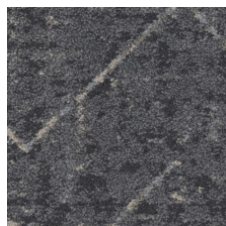
Tejate 21518
LRV 20.1 | L* 51.94



Agave 21535
LRV 19.1 | L* 50.85



Immerse 21555
LRV 11.8 | L* 40.88



Retreat 21580
LRV 10.5 | L* 38.66

Información Adicional

* To learn more about the recyclability of our products and our re[TURN], please visit shawcontract.com/sustainability.

**Meets or exceeds all local and national regulations in country of manufacture.

***This carpet is manufactured to be ADA compliant, but to be fully ADA compliant, the end-user must ensure the carpet is adhered to the floor and installed as outlined in the ADA standards.

[Installation Guidelines](#)

[Maintenance Guidelines](#)

Specifications are subject to nominal manufacturing variance. Material supply and/or manufacturing processes may necessitate changes without notice.

This product is an exclusive design and may not be duplicated in any manner. Use of this design in the creation of another product design is also strictly prohibited.

Visit shawcontract.com/testing for more information.

