

## Identity Ecoworx S® Tile

Style Number	<b>5T557</b>	
Collection	<b>Haven</b>	
Product Type	<b>Carpet Tile</b>	
Construction	<b>Standard</b>	<b>Data + Performance</b>
Type of Manufacture	<b>ISO 2424</b>	<b>tufted 1/10"   39.4 per 10cm</b>
Aspect	<b>ISO 2424</b>	<b>Multi-Level Pattern Loop</b>
Dye Method	<b>EN 994</b>	<b>100% Solution Dyed</b>
Dimensions	<b>EN 994</b>	<b>250 cm x 100 cm   20 tiles (5 m<sup>2</sup>) per box</b>
Primary Backing	<b>ISO 2424</b>	<b>Pet Non-Woven</b>
Secondary Backing	<b>ISO 2424</b>	<b>Ecoworx S® Polyolefin Plastomer</b>
Pile Fibre Composition	<b>ISO 2424</b>	<b>Eco Solution Q100® Polyamide 6   Contains 100% Recycled Content</b>
Total Thickness	<b>ISO 1765</b>	<b>7.5 mm</b>
Effective Pile Thickness	<b>ISO 1766</b>	<b>2.2 mm</b>
Total Mass	<b>ISO 8543</b>	<b>3471 g/m<sup>2</sup></b>
Nominal Total Pile Mass	<b>ISO 2424</b>	<b>881 g/m<sup>2</sup></b>
Effective Pile Mass	<b>ISO 8543</b>	<b>282 g/m<sup>2</sup></b>
Pile Density	<b>ISO 8543</b>	<b>0.127 g/cm<sup>3</sup></b>
Total Recycled Content		<b>56% (pre-consumer 56%   post-consumer 0%)</b>



### Performance

Number of Tufts	<b>ISO 1763</b>	<b>129,000/m<sup>2</sup>   32.8 per 10cm</b>
Electrostatic Propensity	<b>ISO 6356</b>	<b>≤ 2.0 kv (Stroll Test)</b>
Use Classification	<b>EN 1307</b>	<b>33 Commercial Heavy</b>
Luxury Class	<b>EN 1307</b>	<b>LC1</b>
Dimensional Stability	<b>EN 986</b>	<b>≤ 0.2%</b>
Impact Sound Insulation	<b>ISO 10140</b>	<b>28 Db</b>
Sound Absorption Classification	<b>ISO 354/11654</b>	<b>0.15 Aw   Class E</b>
Thermal Resistance m <sup>2</sup> K/W	<b>ISO 8302</b>	<b>0.084 M<sup>2</sup> K/W Tog 0.84</b>
Dry Slip Resistance	<b>ISO 13893</b>	<b>Failed</b>
Colour Fastness To Light	<b>ISO 105-B02</b>	<b>&gt;6</b>
Flammability	<b>EN 13501-1</b>	<b>Bfl-S1 (Adhered Testing)</b>
Castor Chair	<b>EN 985</b>	<b>≥2.4 Continuous Use</b>

**Lifetime Commercial Limited Warranty** subject to installation in full accordance with the manufacturer's instructions and a regular effective cleaning and maintenance programme. Second location warranties are available with the use of non-adhesive IOBAC Magtabs and Tabit accessories.

### Recommended Installation Method



Ashlar



Brick



Herringbone



Monolithic



Stagger



28 dB

## Coordinating Products

Carpet Tile: **Honest Comfortworx® Tile, Familiar Comfortworx® Tile, Identity Comfortworx® Tile, Honest Taskworx® Tile, Identity Taskworx® Tile, Familiar Taskworx® Tile, Familiar Ecoworx S® Tile, Honest Ecoworx S® Tile**

## Product Transparency

Shaw Contract is dedicated to providing clients with a building chemistry that's safe and dependable. Working together, we will help you meet your goals as they pertain to material health. Ecoworx S® products are Cradle to Cradle Certified® Silver and assessed for impacts on human health and the environment. This product can be recycled. When it's time to replace, we can collect through our re-[TURN] scheme in EMEA.

## Material Health &amp; Environmental Certifications

Certifications below apply exclusively to the carpet tile rug itself and not the LokWorx Tabs adhesive

Cradle to Cradle Certified®	<b>Silver Level (Version 3.1)</b>
Environmental Product Declaration (EPD)	<b>3rd Party Certified in Accordance with ISO14044, ISO14025 &amp; EN15804</b>
Embodied Carbon (Cradle to Gate)	<b>4.55 kg CO<sub>2</sub>/m<sup>2</sup></b>
Life-Cycle Carbon Emissions	<b>Carbon Neutral</b>
Environmental Guarantee*	<b>Take Back Policy Offered For All Ecoworx S® Products</b>
Country of Origin**	<b>United Kingdom</b>
BREEAM Contribution Credit	<b>Certificate of Approval Schools/Offices/Health/Industrial Shed Retail</b>

## WELL V2 Contribution Credit

X08 Hazardous Material Reduction Part 1: Limit Hazardous Materials Optimization	<b>C2C Silver Level (Version 3.1)</b>
X10 Volatile Compound Reduction Part 1 (A): Manage Volatile Organic Compounds (VOCs) Optimization	<b>C2C Silver Level (Version 3.1)</b>
X11 Long Term Emissions Control Part 2: Flooring Optimization	<b>M1&gt; Emissions Class For Building Material</b>
X13 Enhanced Material Precaution Part 1: Select Optimized Materials Optimization	<b>C2C Silver Level (Version 3.1)</b>
X14 Material Transparency Part 1: Promote Ingredient Disclosure Optimization	<b>C2C Silver Level (Version 3.1)</b>

## Leed v4 Contribution Credits

MR Credit: Building Product Disclosure and Optimization Material Ingredients - Option 1: Material Ingredient Reporting	<b>C2C Silver Level (Version 3.1)</b>
MR Credit: Building Product Disclosure and Optimization Material Ingredients - Option 2: Material Ingredient Optimization	<b>C2C Silver Level (Version 3.1)</b>
EQ Credit: Low Emitting Materials Option 1: Product Category Calculations	<b>Certified</b>

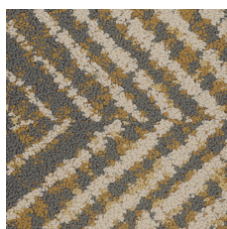
## Air Quality

M1	<b>Certified</b>
----	------------------

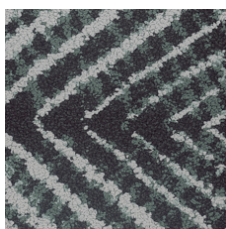
## Memberships

WGBC Framework	<b>WGBC Framework</b>
UKGBC	<b>UKGBC</b>
Emirates Green Building Council	<b>Emirates Green Building Council</b>
Chemsec	<b>Chemsec</b>

## Light Reflectance Value



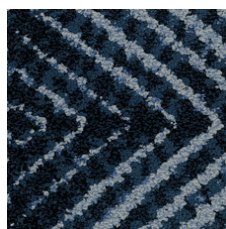
Golden 35210  
LRV 23.3 | L\* 55.33



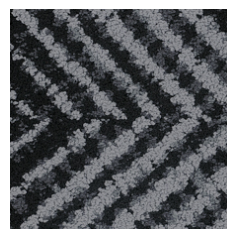
Mint 35327



Ivy 35375  
LRV 15.4 | L\* 46.19



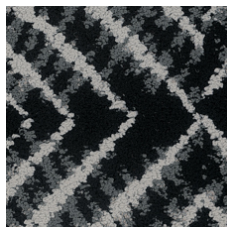
Overdye 35496  
LRV 11.4 | L\* 40.29



Raven 35505  
LRV 8.4 | L\* 34.8



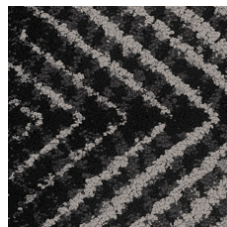
Greige 35516  
LRV 32.5 | L\* 63.76



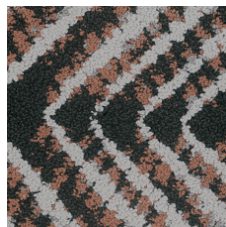
Fog 35518  
LRV 18.8 | L\* 50.42



Rainstorm 35535  
LRV 14.9 | L\* 45.54



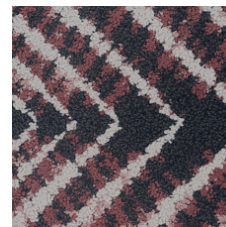
Espresso 35585  
LRV 10.9 | L\* 39.37



Apricot 35675  
LRV 18.9 | L\* 50.53



Truffle 35760  
LRV 12.5 | L\* 41.93



Rosewood 35870  
LRV 20.0 | L\* 51.89

## Additional Information

\*\*Manufactured in ISO 9001 certified facility. Meets or exceeds all local and national regulations in country of manufacture.

[Installation Guidelines](#)

[Maintenance Guidelines](#)

[Lifetime Commercial Limited warranty](#)

Specifications are subject to nominal manufacturing variance. Material supply and/or manufacturing processes may necessitate changes without notice.

This product is an exclusive design and may not be duplicated in any manner. Use of this design in the creation of another product design is also strictly prohibited.

Visit [shawcontract.com/testing](https://shawcontract.com/testing) for more information.

