

## For reference purposes only if printed or downloaded.

## Coordination Des Produits

Carpet Tile: **Stone Comfortworx® Tile, Fragment Comfortworx® Tile, Formation Colours Comfortworx® Tile, Fragment Colours Comfortworx® Tile, Stone Colours Comfortworx® Tile, Formation Comfortworx® Tile, Fragment Taskworx® Tile, Stone Taskworx® Tile, Formation Colours Ecworx S® Tile, Fragment Colours Ecworx S® Tile, Formation Colours Taskworx® Tile, Fragment Colours Taskworx® Tile, Stone Ecworx S® Tile, Formation Taskworx® Tile, Formation Ecworx S® Tile, Stone Colours Taskworx® Tile, Stone Colours Ecworx S® Tile**

## Attributs + Certifications

Certifications Below Apply Exclusively To The Carpet Tile Rug Itself And Not The Lokworx Tabs Adhesive

Certification Cradle to Cradle™ (C2C)

Déclaration environnementale de produit (EPD)

Embodied Carbon (Cradle to Gate)

Life-Cycle Carbon Emissions

garantie environnementale

pays d'origine

BREEAM Contribution Credit

**Silver Level (Version 3.1)**

**Certifié Par Un Organisme Tiers Conformément Aux Normes ISO14044, ISO 14025 & EN15804**

**4.14 kg CO<sub>2</sub>/m<sup>2</sup>**

**Carbon Neutral**

**Take Back Policy Offered For All Ecworx S® Products**

**United Kingdom**

**Certificate of Approval  
Schools/Offices/Health/Industrial Shed  
Retail**

## Well V2 Contribution Credit

X08 Réduction des matières dangereuses Partie 1 : Optimiser la limitation des matières dangereuses – 1 pt

**C2C Silver Level (Version 3.1)**

X10 Réduction des composés volatils Partie 1 (A) : Optimisation de la gestion des composés organiques volatils (COV) – 1 pt

**C2C Silver Level (Version 3.1)**

X11 Contrôle des émissions à long terme Partie 2 : Optimisation des revêtements de sol – 1 pt

**M1> Emissions Class For Building Material**

X13 Précaution accrue à l'égard des matériaux Partie 1 : Choisir des matériaux optimisés – max 2 pts

**C2C Silver Level (Version 3.1)**

X14 Transparence des matériaux Partie 1 : Promouvoir l'optimisation de la divulgation des composants – max 2 pts

**C2C Silver Level (Version 3.1)**

## Contribution À La Certification Leed

MR Credit: Building Product Disclosure and Optimisation  
Material Ingredients - Option 1: Material Ingredient Reporting

**C2C Silver Level (Version 3.1)**

MR Credit: Building Product Disclosure and Optimisation  
Material Ingredients - Option 2: Material Ingredient Optimization

**C2C Silver Level (Version 3.1)**

## Memberships

WGBC Framework

**WGBC Framework**

UKGBC

**UKGBC**

Emirates Green Building Council

**Emirates Green Building Council**

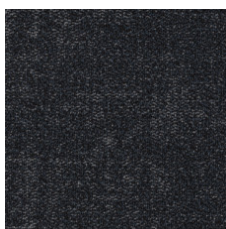
Chemsec

**Chemsec**

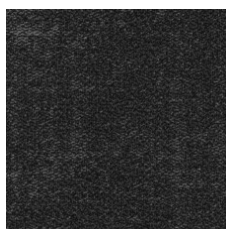
### Available Colorways



Marble 53100



Azurite 53485



Granite 53500



Mica 53518



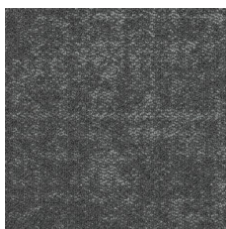
Mortar 53530



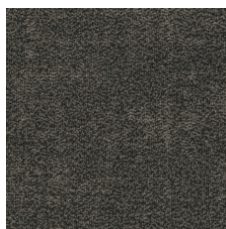
Limestone 53535



Anthracite 53555



Chromite 53580



Mix 53597

### Informations Supplémentaires

\*\*Manufactured in ISO 9001 certified facility. Meets or exceeds all local and national regulations in country of manufacture.

[Installation Guidelines](#)

[Maintenance Guidelines](#)

[lifetime commercial limited](#)

Specifications are subject to nominal manufacturing variance. Material supply and/or manufacturing processes may necessitate changes without notice.

This product is an exclusive design and may not be duplicated in any manner. Use of this design in the creation of another product design is also strictly prohibited.

Visit [shawcontract.com/testing](http://shawcontract.com/testing) for more information.



Corporate Headquarters +1 800 257 7429 | +1 706 532 7984 | Atlanta +1 404 853 7429 | Bengaluru +91 80 6773 0202 | Beijing +86 10 6568 588 | Chicago +1 312 467 1331 | Dubai +971 4 584 6956 | Hong Kong +852 2623 0371 | London +44 207 961 4120 | Los Angeles +1 800 233 1614 | Melbourne +61 3 9939 8543 | Mexico City +55 5010 7600 | Mumbai +91 22 6284 5050 | Nantong +86 400 800 7429 | New York +1 212 953 7429 | Paris +33 (0) 1 81 22 44 39 | San Francisco +1 415 955 1920 | Shanghai +86 21 3338 4000 | Singapore +65 6733 1811 | Sydney +61 800 556 302

© 2025 Shaw Industries Group, Inc., a Berkshire Hathaway Company  
July 18, 2025

3 of 3