

Fragment Ecoworx S® Tile

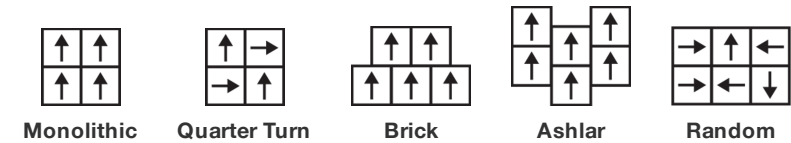
|                             |                        |   |
|-----------------------------|------------------------|---|
| Stijlnummer                 | 5T579                  |   |
| Collectie                   | Floor Architecture III |   |
| Producttype                 | Tapijttegel            |   |
| Construction                | Standard               | Data + Performance                        |
| Type Fabricage              | ISO 2424               | tufted 1/12"   47.2 per 10cm              |
| Uitzicht                    | ISO 2424               | Multilevel-Patroonlus                     |
| Verfmethode                 | EN 994                 | 100% In Oplossing Geverfd                 |
| Productformaat              | EN 994                 | 50 cm x 50 cm   20 tiles (5 m²) per box   |
| Primaire Backing            | ISO 2424               | Pet Nonwoven                              |
| Secundaire Backing          | ISO 2424               | Ecoworx S® Polyolefin Plastomer           |
| Totale Dikte                | ISO 1765               | 5.6 mm                                    |
| Afgewerkte Pooldikte        | ISO 1766               | 1.7 mm                                    |
| Totale Massa                | ISO 8543               | 2287 g/m²                                 |
| Getuft Gewicht              | ISO 2424               | 630 g/m²                                  |
| Effectieve Poolmassa        | ISO 8543               | 201 g/m²                                  |
| Pooldichtheid               | ISO 8543               | 0.115 g/cm³                               |
| Totaal Gerecycleerde Inhoud |                        | 53% (pre-consumer 53%   post-consumer 0%) |



Gegevens

|                                  |               |                          |
|----------------------------------|---------------|--------------------------|
| Steken                           | ISO 1763      | 193,000/m²   41 per 10cm |
| Elektrostatische Weerstand       | ISO 6356      | ≤ 2.0 kv (Stroll Test)   |
| Gebruik Classificatie            | EN 1307       | 33 Commercial Heavy      |
| Luxeklasse                       | EN 1307       | LC1                      |
| Dimensionale Stabiliteit         | EN 986        | ≤ 0.2%                   |
| Contactgeluidsisolatie           | ISO 10140     | 26 Db                    |
| Geluidsabsorptieclassificatie    | ISO 354/11654 | 0.20 Aw   Class E        |
| Warmteweerstand m² K/w           | ISO 8302      | 0.069 M² K/W Tog 0.69    |
| Weerstand Tegen Droog Uitglijden | ISO 13893     | Pass / No Pulled Loops   |
| Kleurvastheid Voor Licht         | ISO 105-B02   | >6                       |
| Ontvlambaarheid                  | EN 13501-1    | Bfl-S1 (Adhered Testing) |
| Stoel Met Wieltjes               | EN 985        | ≥2.4 Continuous Use      |

Aanbevolen Installatiemethode



## Coördinerende Producten

Carpet Tile: **Stone Comfortworx® Tile, Fragment Comfortworx® Tile, Formation Colours Comfortworx® Tile, Fragment Colours Comfortworx® Tile, Stone Colours Comfortworx® Tile, Formation Comfortworx® Tile, Fragment Taskworx® Tile, Stone Taskworx® Tile, Formation Colours Ecoworx S® Tile, Fragment Colours Ecoworx S® Tile, Formation Colours Taskworx® Tile, Fragment Colours Taskworx® Tile, Stone Ecoworx S® Tile, Formation Taskworx® Tile, Formation Ecoworx S® Tile, Stone Colours Taskworx® Tile, Stone Colours Ecoworx S® Tile**

## Kenmerken + Certificeringen

Certifications Below Apply Exclusively To The Carpet Tile Rug Itself And Not The Lokworx Tabs Adhesive

Cradle to Cradle gecertificeerd™

Environmental Product Declaration (EPD)

Embodied Carbon (Cradle to Gate)

Life-Cycle Carbon Emissions

milieugarantie

land van herkomst

BREEAM Contribution Credit

**Zilver Niveau (Versie 3.1)**

**3de Partij Gecertificeerd in Overeenstemming Met ISO14044, ISO14025 & EN15804**

**4.14 kg CO<sub>2</sub>/m<sup>2</sup>**

**Carbon Neutral**

**Take Back Policy Offered For All Ecoworx S® Products**

**Verenigd Koninkrijk**

**Certificate of Approval  
Schools/Offices/Health/Industrial Shed  
Retail**

## Well V2 Contribution Credit

X08 Reductie gevaarlijke stoffen Deel 1: Beperking Optimalisatie Gevaarlijke Materialen - 1 pt **C2C Silver Level (Version 3.1)**

X10 Reductie van vluchtige stoffen Deel 1 (A): Beheer Vluchtige Organische Stoffen (VOS) Optimalisatie - 1 pt **C2C Silver Level (Version 3.1)**

X11 Langetermijn-emissiebeheersing - deel 2: Optimalisering van vloeren - 1 pt **M1> Emissions Class For Building Material**

X13 Verbeterde materiaalvoorzorgsmaatregelen Deel 1: Optimaliseren van materiaalkeuze - max 2 punten **C2C Silver Level (Version 3.1)**

X14 Transparantie van materialen Deel 1: Optimalisatie: Bevorderen van ingrediëntenopenbaarmaking - max 2 punten **C2C Silver Level (Version 3.1)**

## Groen Leed Bijdragekrediet

"MR-krediet: Openbaarmaking en optimalisering van bouwproducten Materiaalingrediënten - Optie 1: Rapportage materiaalingrediënten" **C2C Silver Level (Version 3.1)**

"MR-krediet: openbaarmaking en optimalisering van bouwproducten Materiaalingrediënten - Optie 2: Optimalisering van materiaalingrediënten" **C2C Silver Level (Version 3.1)**

## Memberships

WGBC Framework

UKGBC

Emirates Green Building Council

Chemsec

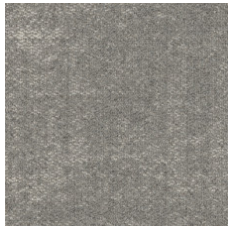
**WGBC Framework**

**UKGBC**

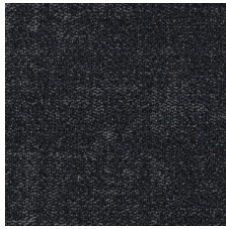
**Emirates Green Building Council**

**Chemsec**

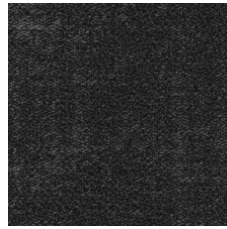
### Available Colorways



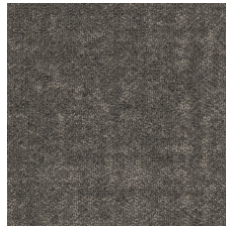
Marble 53100



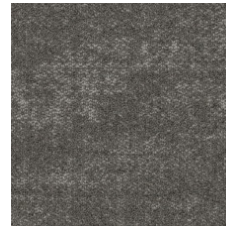
Azurite 53485



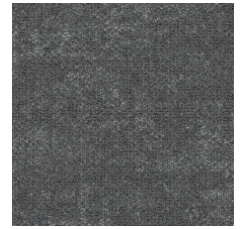
Granite 53500



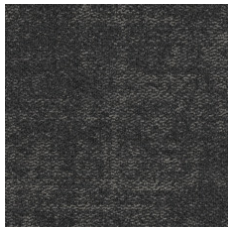
Mica 53518



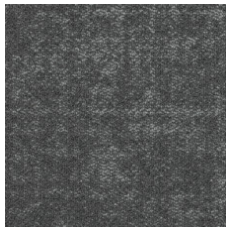
Mortar 53530



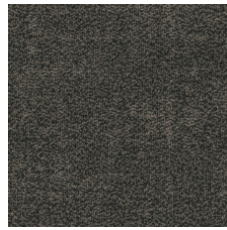
Limestone 53535



Anthracite 53555



Chromite 53580



Mix 53597

### Aanvullende Informatie

\*\*Manufactured in ISO 9001 certified facility. Meets or exceeds all local and national regulations in country of manufacture.

[Installation Guidelines](#)

[Maintenance Guidelines](#)

[lifetime commercial limited](#)

Specifications are subject to nominal manufacturing variance. Material supply and/or manufacturing processes may necessitate changes without notice.

This product is an exclusive design and may not be duplicated in any manner. Use of this design in the creation of another product design is also strictly prohibited.

Visit [shawcontract.com/testing](http://shawcontract.com/testing) for more information.



Corporate Headquarters +1 800 257 7429 | +1 706 532 7984 | Atlanta +1 404 853 7429 | Bengaluru +91 80 6773 0202 | Beijing +86 10 6568 588 | Chicago +1 312 467 1331 | Dubai +971 4 584 6956 | Hong Kong +852 2623 0371 | London +44 207 961 4120 | Los Angeles +1 800 233 1614 | Melbourne +61 3 9939 8543 | Mexico City +55 5010 7600 | Mumbai +91 22 6284 5050 | Nantong +86 400 800 7429 | New York +1 212 953 7429 | Paris +33 (0) 1 81 22 44 39 | San Francisco +1 415 955 1920 | Shanghai +86 21 3338 4000 | Singapore +65 6733 1811 | Sydney +61 800 556 302

© 2025 Shaw Industries Group, Inc., a Berkshire Hathaway Company  
July 18, 2025

3 of 3