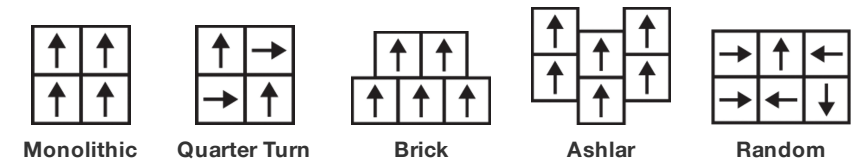


Ponder Tile

Product Type	Carpet Tile	
Collection	Creative Zone	
Style Number	5T596	
Construction	Multi-Level Pattern Loop	
Dye Method	100% Solution Dyed	
Secondary Backing	Ecworx® Tile	
Protective Treatments	SSP® Shaw Soil Protection	
Recommended Adhesive	LokDots, 3000 Carpet Tile 1 Gallon, 4151 Multi-Use Carpet Tile 4 Gallon, 5000 Carpet Tile 1 Gallon, LokWorx Adhesive Tabs, 3800 Indoor Outdoor Carpet Tile 4 Gallon or 5000 Carpet Tile 4 Gallon	
	u.s.	metric
Product Size	24 in x 24 in	61 cm x 61 cm
Area Per Carton	48 ft²	4.46 m²
Pieces Per Carton	12 pcs	
Gauge	1/12 in	47.2 per 10 cm
Stitches	9.0 per in	36.0 per 10 cm
Finished Pile Thickness	0.088 in	2.24 mm
Average Density	7364 oz/yd³	0.272 g/cm³
Kilotex		10.06
Total Thickness	0.238 in	6.05 mm
Tufted Weight	18 oz/yd²	610.3 g/m²



Recommended Installation Method



Data + Testing

Radiant Panel	Class I
Nbs Smoke	Less Than 450
Electrostatic Propensity	Less Than 3.5 kv
Cri Green Label Plus (Glp)	GLP9968
Pill Test	Pass*
Ada Compliance	>0.6, Meets the recommended static coefficient of friction for ADA walking surfaces and accessible routes***

Test Reports may be included or listed by the manufacturing/inventory style number as opposed to the noted selling style number.

Warranties

Lifetime Commercial Limited

Coordinating Products

Carpet Tile: **Daydreamer Tile, Imagine Tile, Mindscape Tile**

Material Health & Environmental Certifications

Certifications Below Apply Exclusively To The Carpet Tile Rug Itself And Not The Lokworx Tabs Adhesive

Health & Wellbeing

Material Ingredient Transparency

**Cradle to Cradle Certified® | Silver Level (Version 4.0)**  
**Health Product Declaration (HPD) | 1,000 ppm Disclosure**  
**Living Building Challenge (LBC) | Free of Red List Chemicals**  
**Declare | LBC Compliant**  
**NSF 140 | Gold**  
**CRI Green Label Plus (GLP) | GLP9968**

Indoor Air Quality

Climate Impact

Environmental Product Declaration (EPD)

**3rd Party Certified in Accordance with ISO14044, ISO14025 & EN15804**

Embodied Carbon (Cradle to Gate)

**3.71 kg CO<sub>2</sub>/m<sup>2</sup>**

Life-Cycle Carbon Emissions

**Carbon Neutral**

Total Recycled Content

**57% (Pre-Consumer 57% | Post-Consumer 0%)**

Product Packaging

**100% Recyclable**

Global Product Assessment

**Singapore Green Label | Certified**  
**CE Marking (EN 14041) | 3rd Party Certified**  
**Environmental Guarantee\* | Re[turn] Reclamation Program\* | Through Our Environmental Guarantee, Shaw Pledges to Transport And Recycle Any Ecoworx Carpet.**  
**Country of Origin\*\* | USA**

Well V2 Contribution Credit

X08 Hazardous Material Reduction Part 1: Limit Hazardous Materials Optimization – 1 pt

**C2C Silver Level (Version 4.0)**

X10 Volatile Compound Reduction Part 1 (A): Manage Volatile Organic Compounds (VOCs) Optimization – 1 pt

**C2C Silver Level (Version 4.0)**

X11 Long Term Emissions Control Part 2: Flooring Optimization – 1 pt

**Green Label Plus Certification: GLP9968**

X13 Enhanced Material Precaution Part 1: Select Optimized Materials Optimization – max 2 pts

**C2C Silver Level (Version 4.0)**

X14 Material Transparency Part 1: Promote Ingredient Disclosure Optimization – max 2 pts

**C2C Silver Level (Version 4.0)**

Green Leed Contribution Credit

MR Credit: Building Product Disclosure and Optimization  
Environmental Product Declarations - Option 1: Environmental Product Declaration (EPD)

**3rd Party Certified in Accordance with ISO14044, ISO14025 & EN15804**

MR Credit: Building Product Disclosure and Optimization  
Material Ingredients - Option 1: Material Ingredient Reporting

**C2C Silver Level (Version 4.0) or HPD (Version 2.1)**

MR Credit: Building Product Disclosure and Optimization  
Material Ingredients - Option 2: Material Ingredient Optimization

**C2C Silver Level (Version 4.0)**

MR Credit: Building Product Disclosure and Optimization  
Sourcing of Raw Materials - Option 2: Leadership Extraction Practices

**Environmental Guarantee: Re[turn] Reclamation Program\* | Through Our Environmental Guarantee, Shaw Pledges to Transport And Recycle Any Ecoworx® Carpet.**

EQ Credit: Low Emitting Materials  
Option 1: Product Category Calculations

**Green Label Plus Certification: GLP9968**

MR Credit: Interiors Life-Cycle Impact Reduction  
Option 3: Design for Flexibility

**Ecoworx® Tile with Lokdots Installation System**

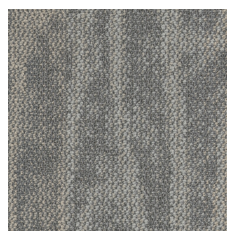
## Available Colorways



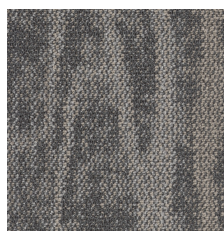
Brainstorm 93500  
LRV 7.6 | L\* 33.08



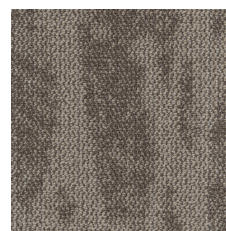
Thoughtful 93515  
LRV 19.3 | L\* 51.04



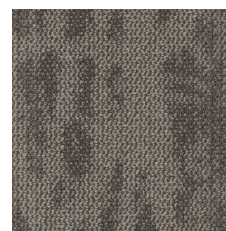
Reset 93535  
LRV 23.3 | L\* 55.34



Cultivate 93580  
LRV 13.7 | L\* 43.82



Peptalk 93760  
LRV 16 | L\* 46.92



Reveal 93761  
LRV 14.2 | L\* 44.54

## Additional Information

\* To learn more about the recyclability of our products and our re[TURN], please visit [shawcontract.com/sustainability](https://shawcontract.com/sustainability).

\*\*Meets or exceeds all local and national regulations in country of manufacture.

\*\*\*This carpet is manufactured to be ADA compliant, but to be fully ADA compliant, the end-user must ensure the carpet is adhered to the floor and installed as outlined in the ADA standards.

[Installation Guidelines](#)

[Maintenance Guidelines](#)

Specifications are subject to nominal manufacturing variance. Material supply and/or manufacturing processes may necessitate changes without notice.

This product is an exclusive design and may not be duplicated in any manner. Use of this design in the creation of another product design is also strictly prohibited.

Visit [shawcontract.com/testing](https://shawcontract.com/testing) for more information.



**PVC-Free**

Corporate Headquarters +1 800 257 7429 | +1 706 532 7984 | Atlanta +1 404 853 7429 | Bengaluru +91 80 6773 0202 | Beijing +86 10 6568 588 | Chicago +1 312 467 1331 | Dubai +971 4 584 6956 | Hong Kong +852 2623 0371 | London +44 207 961 4120 | Los Angeles +1 800 233 1614 | Melbourne +61 3 9939 8543 | Mexico City +55 5010 7600 | Mumbai +91 22 6284 5050 | Nantong +86 400 800 7429 | New York +1 212 953 7429 | Paris +33 (0) 1 81 22 44 39 | San Francisco +1 415 955 1920 | Shanghai +86 21 3338 4000 | Singapore +65 6733 1811 | Sydney +61 800 556 302