

Stone Ecoworx S® Tile

Numéro Du Style	5T580	
Collection	Floor Architecture III	
Type De Produit	Dalles De Moquette	
Construction	Standard	Data + Performance
Type De Fabrication	ISO 2424	tufted 1/10" 39.4 per 10cm
Construction	ISO 2424	Tufté Structuré Bouclé à Motif
Méthode De Coloration	EN 994	100% Solution Teinte
Dimensions Du Produit	EN 994	50 cm x 50 cm 20 tiles (5 m²) per box
Sous-couche Primaire	ISO 2424	Pet Non-Woven
Sous-couche Secondaire	ISO 2424	Ecoworx S® Polyolefin Plastomer
Epaisseur Du Velours	ISO 1765	6.0 mm
Épaisseur Du Velours Fini	ISO 1766	1.9 mm
Poids Total	ISO 8543	2380 g/m²
Poids Tufté	ISO 2424	630 g/m²
Poids Du Velours Utile	ISO 8543	238 g/m²
Densité Du Velours	ISO 8543	0.123 g/cm³
Contenu Recyclé Total	53% (pre-consumer 53% post-consumer 0%)	



Données

Points	ISO 1763	165,000/m² 42 per 10cm
Propension Electrostatique	ISO 6356	≤ 2.0 kv (Stroll Test)
Classification d'Utilisation	EN 1307	33 Commercial Heavy
Classification Luxe	EN 1307	LC1
Stabilité Dimensionnelle	EN 986	≤ 0.2%
Isolation Acoustique	ISO 10140	26 Db
Classification d'Absorption Sonore	ISO 354/11654	0.20 Aw Class E
Résistance Thermique m² K/w	ISO 8302	0.074 M² K/W Tog 0.74
Dry Slip Resistance	ISO 13893	Pass / No Pulled Loops
Résistance De La Couleur À La Lumière	ISO 105-B02	>6
Inflammabilité	EN 13501-1	Bfl-S1 (Adhered Testing)
Chaise À Roulette	EN 985	≥2.4 Continuous USE

Méthodes d'Installation Conseillées

Monolithic

Quarter Turn

Brick

Ashlar

Random

26 dB

Coordination Des Produits

Carpet Tile: **Stone Comfortworx® Tile, Fragment Comfortworx® Tile, Formation Colours Comfortworx® Tile, Fragment Colours Comfortworx® Tile, Stone Colours Comfortworx® Tile, Formation Comfortworx® Tile, Fragment Taskworx® Tile, Stone Taskworx® Tile, Formation Colours Ecoworx S® Tile, Fragment Colours Ecoworx S® Tile, Formation Colours Taskworx® Tile, Fragment Colours Taskworx® Tile, Fragment Ecoworx S® Tile, Formation Taskworx® Tile, Formation Ecoworx S® Tile, Stone Colours Taskworx® Tile, Stone Colours Ecoworx S® Tile**

Attributs + Certifications

Certifications Below Apply Exclusively To The Carpet Tile Rug Itself And Not The Lokworx Tabs Adhesive

Certification Cradle to Cradle™ (C2C)

Déclaration environnementale de produit (EPD)

Embodied Carbon (Cradle to Gate)

Life-Cycle Carbon Emissions

garantie environnementale

pays d'origine

BREEAM Contribution Credit

Silver Level (Version 3.1)

Certifié Par Un Organisme Tiers Conformément Aux Normes ISO14044, ISO 14025 & EN15804

4.14 kg CO₂/m²

Carbon Neutral

Take Back Policy Offered For All Ecoworx S® Products

United Kingdom

**Certificate of Approval
Schools/Offices/Health/Industrial Shed
Retail**

Well V2 Contribution Credit

X08 Réduction des matières dangereuses Partie 1 : Optimiser la limitation des matières dangereuses – 1 pt

C2C Silver Level (Version 3.1)

X10 Réduction des composés volatils Partie 1 (A) : Optimisation de la gestion des composés organiques volatils (COV) – 1 pt

C2C Silver Level (Version 3.1)

X11 Contrôle des émissions à long terme Partie 2 : Optimisation des revêtements de sol – 1 pt

M1> Emissions Class For Building Material

X13 Précaution accrue à l'égard des matériaux Partie 1 : Choisir des matériaux optimisés – max 2 pts

C2C Silver Level (Version 3.1)

X14 Transparence des matériaux Partie 1 : Promouvoir l'optimisation de la divulgation des composants – max 2 pts

C2C Silver Level (Version 3.1)

Contribution À La Certification Leed

MR Credit: Building Product Disclosure and Optimisation
Material Ingredients - Option 1: Material Ingredient Reporting

C2C Silver Level (Version 3.1)

MR Credit: Building Product Disclosure and Optimisation
Material Ingredients - Option 2: Material Ingredient Optimization

C2C Silver Level (Version 3.1)

Memberships

WGBC Framework

WGBC Framework

UKGBC

UKGBC

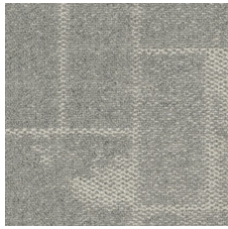
Emirates Green Building Council

Emirates Green Building Council

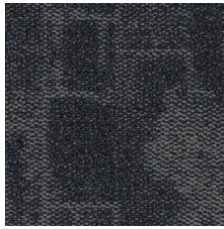
Chemsec

Chemsec

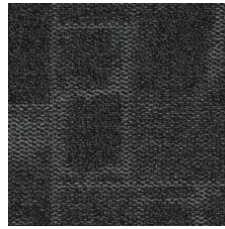
Available Colorways



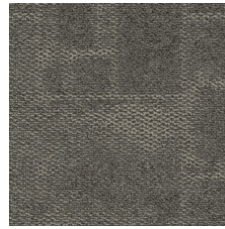
Marble 53100



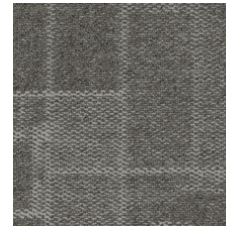
Azurite 53485



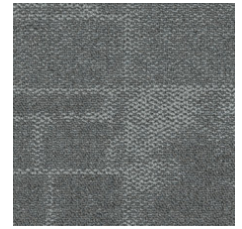
Granite 53500



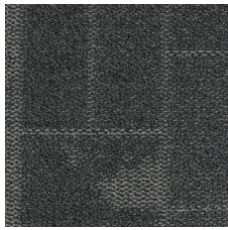
Mica 53518



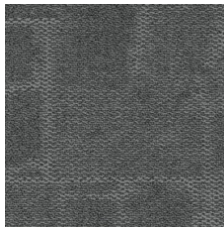
Mortar 53530



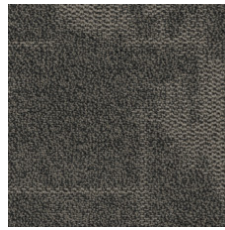
Limestone 53535



Anthracite 53555



Chromite 53580



Mix 53597

Informations Supplémentaires

**Manufactured in ISO 9001 certified facility. Meets or exceeds all local and national regulations in country of manufacture.

[Installation Guidelines](#)

[Maintenance Guidelines](#)

[lifetime commercial limited](#)

Specifications are subject to nominal manufacturing variance. Material supply and/or manufacturing processes may necessitate changes without notice.

This product is an exclusive design and may not be duplicated in any manner. Use of this design in the creation of another product design is also strictly prohibited.

Visit shawcontract.com/testing for more information.



Corporate Headquarters +1 800 257 7429 | +1 706 532 7984 | Atlanta +1 404 853 7429 | Bengaluru +91 80 6773 0202 | Beijing +86 10 6568 588 | Chicago +1 312 467 1331 | Dubai +971 4 584 6956 | Hong Kong +852 2623 0371 | London +44 207 961 4120 | Los Angeles +1 800 233 1614 | Melbourne +61 3 9939 8543 | Mexico City +55 5010 7600 | Mumbai +91 22 6284 5050 | Nantong +86 400 800 7429 | New York +1 212 953 7429 | Paris +33 (0) 1 81 22 44 39 | San Francisco +1 415 955 1920 | Shanghai +86 21 3338 4000 | Singapore +65 6733 1811 | Sydney +61 800 556 302

© 2025 Shaw Industries Group, Inc., a Berkshire Hathaway Company
July 18, 2025

3 of 3