

Stijlnummer	5T584	
Collectie	Floor Architecture III	
Producttype	Tapijttegel	
Construction	Standard	Data + Performance
Type Fabricage	ISO 2424	tufted 1/12" 47.2 per 10cm
Uitzicht	ISO 2424	Multilevel-Patroonlus
Verfmethode	EN 994	100% In Oplossing Geverfd
Productformaat	EN 994	50 cm x 50 cm 20 tiles (5 m²) per box
Primaire Backing	ISO 2424	Pet Nonwoven
Secundaire Backing	ISO 2424	Taskworx® Tegel Polymeer Gemodificeerd Bitumen
Vezel	ISO 2424	Ecosolution Q® Polyamide 6
Totale Dikte	ISO 1765	6.3 mm
Afgewerkte Pooldikte	ISO 1766	1.9 mm
Totale Massa	ISO 8543	4067 g/m²
Getuft Gewicht	ISO 2424	630 g/m²
Effectieve Poolmassa	ISO 8543	190 g/m²
Pooldichtheid	ISO 8543	0.100 g/cm³
Totaal Gerecycleerde Inhoud		50% (pre-consumer 50% post-consumer 0%)

Gegevens

Steken	ISO 1763	193,000/m² 41 per 10cm
Elektrostatische Weerstand	ISO 6356	≤ 2.0 kv (Stroll Test)
Gebruik Classificatie	EN 1307	33 Commercial Heavy
Luxeklasse	EN 1307	LC1
Dimensionale Stabiliteit	EN 986	≤ 0.2%
Contactgeluidsisolatie	ISO 10140	26db
Geluidsabsorptieclassificatie	ISO 354/11654	0.15 Aw Class E
Warmteweerstand m² K/w	ISO 8302	0.065 M² K/W Tog 0.65
Weerstand Tegen Droog Uitglijden	ISO 13893	Pass / No Pulled Loops
Kleurvastheid Voor Licht	ISO 105-B02	>6
Ontvlambaarheid	EN 13501-1	Bfl-S1 (Adhered Testing)
Stoel Met Wieltjes	EN 985	≥2.4 Continuous USe

15 Jaar Commercieel Beperkt subject to installation in full accordance with the manufacturer's instructions and a regular effective cleaning and maintenance programme. Second location warranties are available with the use of non-adhesive IOBAC Magtabs and Tabit accessories.

Aanbevolen Installatiemethode

Monolithic

Quarter Turn

Brick

Ashlar

Random

26dB

Coördinerende Producten

Carpet Tile: **Stone Comfortworx® Tile, Fragment Comfortworx® Tile, Formation Colours Comfortworx® Tile, Fragment Colours Comfortworx® Tile, Stone Colours Comfortworx® Tile, Formation Comfortworx® Tile, Fragment Taskworx® Tile, Stone Taskworx® Tile, Formation Colours Ecoworx S® Tile, Fragment Colours Ecoworx S® Tile, Formation Colours Taskworx® Tile, Fragment Colours Taskworx® Tile, Fragment Ecoworx S® Tile, Stone Ecoworx S® Tile, Formation Ecoworx S® Tile, Stone Colours Taskworx® Tile, Stone Colours Ecoworx S® Tile**

Kenmerken + Certificeringen

Certifications Below Apply Exclusively To The Carpet Tile Rug Itself And Not The Lokworx Tabs Adhesive

Cradle to Cradle gecertificeerd™

Environmental Product Declaration (EPD)

milieugarantie

ISO 9001

land van herkomst

BREEAM Contribution Credit

Bronzen Vlak (Versie 3.1)

3de Partij Gecertificeerd in Overeenstemming Met ISO14044, ISO14025 & EN15804

Terugnamebeleid Aangeboden Voor Alle Taskworx Producten

Gecertificeerd

Verenigd Koninkrijk

Certificate of Approval

**Schools/Offices/Health/Industrial Shed
Retail**

Well V2 Contribution Credit

X08 Reductie gevaarlijke stoffen Deel 1: Beperking Optimalisatie Gevaarlijke Materialen - 1 pt **C2C Bronze Level (Version 3.1)**

X10 Reductie van vluchtige stoffen Deel 1 (A): Beheer Vluchtige Organische Stoffen (VOS) Optimalisatie - 1 pt **C2C Bronze Level (Version 3.1)**

X10 Volatile Compound Reduction
Part 2: Manage Semi-Volatile Organic Compounds (SVOCs) Optimization **C2C Bronze Level (Version 3.1)**

X11 Langetermijn-emissiebeheersing - deel 2: Optimalisering van vloeren - 1 pt **M1> Emissions Class For Building Material**

X13 Verbeterde materiaalvoorzorgsmaatregelen Deel 1: Optimaliseren van materiaalkeuze - max 2 punten **C2C Bronze Level (Version 3.1)**

X14 Transparantie van materialen Deel 1: Optimalisatie: Bevorderen van ingrediëntenopenbaarmaking - max 2 punten **C2C Bronze Level (Version 3.1)**

Groen Leed Bijdragekrediet

"MR-krediet: openbaarmaking en optimalisering van bouwproducten Milieuproductverklaringen - Optie 1: Milieuproductverklaring (EPD)"

3rd Party Certified in Accordance with ISO14044, ISO14025 & EN15804

"MR-krediet: Openbaarmaking en optimalisering van bouwproducten Materiaalingrediënten - Optie 1: Rapportage materiaalingrediënten"

C2C Bronze Level (Version 3.1)

"MR-krediet: openbaarmaking en optimalisering van bouwproducten Materiaalingrediënten - Optie 2: Optimalisering van materiaalingrediënten"

C2C Bronze Level (Version 3.1)

Air Quality

M1

Certified

Memberships

WGBC Framework

WGBC Framework

UKGBC

UKGBC

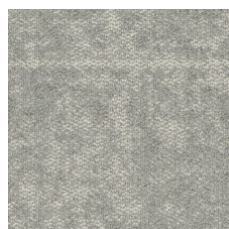
Emirates Green Building Council

Emirates Green Building Council

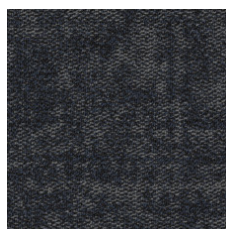
Chemsec

Chemsec

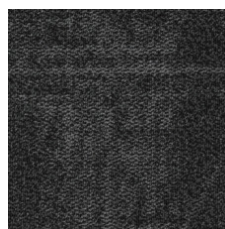
Lichtreflectiewaarde



Marble 53100
LRV 27.4 | L* 59.35



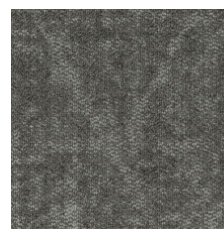
Azurite 53485
LRV 3.3 | L* 21.22



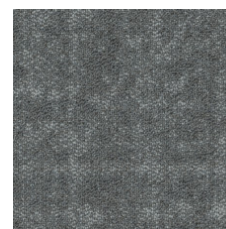
Granite 53500
LRV 3.4 | L* 21.73



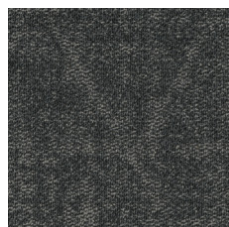
Mica 53518
LRV 9.4 | L* 36.74



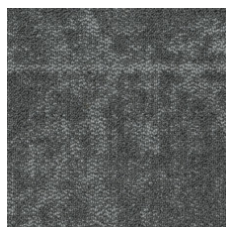
Mortar 53530
LRV 13 | L* 42.74



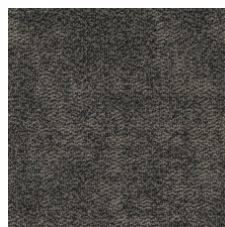
Limestone 53535
LRV 13.1 | L* 42.86



Anthracite 53555
LRV 6.5 | L* 30.68



Chromite 53580
LRV 10 | L* 37.93



Mix 53597

Aanvullende Informatie

**Manufactured in ISO 9001 certified facility. Meets or exceeds all local and national regulations in country of manufacture.

[Installation Guidelines](#)

[Maintenance Guidelines](#)

[15 jaar commercieel beperkt](#)

Specifications are subject to nominal manufacturing variance. Material supply and/or manufacturing processes may necessitate changes without notice.

This product is an exclusive design and may not be duplicated in any manner. Use of this design in the creation of another product design is also strictly prohibited.

Visit shawcontract.com/testing for more information.



Corporate Headquarters +1 800 257 7429 | +1 706 532 7984 | Atlanta +1 404 853 7429 | Bengaluru +91 80 6773 0202 | Beijing +86 10 6568 588 | Chicago +1 312 467 1331 | Dubai +971 4 584 6956 | Hong Kong +852 2623 0371 | London +44 207 961 4120 | Los Angeles +1 800 233 1614 | Melbourne +61 3 9939 8543 | Mexico City +55 5010 7600 | Mumbai +91 22 6284 5050 | Nantong +86 400 800 7429 | New York +1 212 953 7429 | Paris +33 (0) 1 81 22 44 39 | San Francisco +1 415 955 1920 | Shanghai +86 21 3338 4000 | Singapore +65 6733 1811 | Sydney +61 800 556 302

© 2025 Shaw Industries Group, Inc., a Berkshire Hathaway Company
June 1, 2025

3 of 3