

Numéro Du Style	5T586	
Collection	Floor Architecture III	
Type De Produit	Dalles De Moquette	
Construction	Standard	Data + Performance
Type De Fabrication	ISO 2424	tufted 1/10"   39.4 per 10cm
Construction	ISO 2424	Tufté Structuré Bouclé à Motif
Méthode De Coloration	EN 994	100% Solution Teinte
Dimensions Du Produit	EN 994	50 cm x 50 cm   20 tiles (5 m²) per box
Sous-couche Primaire	ISO 2424	Pet Non-Woven
Sous-couche Secondaire	ISO 2424	Taskworx® Tile   Bitume Modifié Par Polymère
Fibre	ISO 2424	Ecosolution Q® Polyamide 6
Epaisseur Du Velours	ISO 1765	6.8 mm
Épaisseur Du Velours Fini	ISO 1766	2.7 mm
Poids Total	ISO 8543	3825 g/m²
Poids Tufté	ISO 2424	630 g/m²
Poids Du Velours Utile	ISO 8543	297 g/m²
Densité Du Velours	ISO 8543	0.108 g/cm³
Contenu Recyclé Total		51% (pre-consumer 51%   post-consumer 0%)

Données

Points	ISO 1763	165,000/m²   42 per 10cm
Propension Electrostatique	ISO 6356	≤ 2.0 kv (Stroll Test)
Classification d'Utilisation	EN 1307	33 Commercial Heavy
Classification Luxe	EN 1307	LC1
Stabilité Dimensionnelle	EN 986	≤ 0.2%
Isolation Acoustique	ISO 10140	26db
Classification d'Absorption Sonore	ISO 354/11654	0.15 Aw   Class E
Résistance Thermique m² K/w	ISO 8302	0.077 M² K/W Tog 0.77
Dry Slip Resistance	ISO 13893	Pass / No Pulled Loops
Résistance De La Couleur À La Lumière	ISO 105-B02	>6
Inflammabilité	EN 13501-1	Bfl-S1 (Adhered Testing)
Chaise À Roulette	EN 985	≥2.4 Continuous USe

Limitée Commerciale De 15 Ans subject to installation in full accordance with the manufacturer's instructions and a regular effective cleaning and maintenance programme. Second location warranties are available with the use of non-adhesive IOBAC Magtabs and Tabit accessories.

Méthodes d'Installation Conseillées

Monolithic

Quarter Turn

Brick

Ashlar

Random

26dB

## Coordination Des Produits

Carpet Tile: **Stone Comfortworx® Tile, Fragment Comfortworx® Tile, Formation Colours Comfortworx® Tile, Fragment Colours Comfortworx® Tile, Stone Colours Comfortworx® Tile, Formation Comfortworx® Tile, Fragment Taskworx® Tile, Stone Taskworx® Tile, Formation Colours Ecworx S® Tile, Fragment Colours Ecworx S® Tile, Formation Colours Taskworx® Tile, Fragment Colours Taskworx® Tile, Fragment Ecworx S® Tile, Stone Ecworx S® Tile, Formation Taskworx® Tile, Formation Ecworx S® Tile, Stone Colours Ecworx S® Tile**

## Attributs + Certifications

Certifications Below Apply Exclusively To The Carpet Tile Rug Itself And Not The Lokworx Tabs Adhesive

Certification Cradle to Cradle™ (C2C)

Déclaration environnementale de produit (EPD)

garantie environnementale

ISO 9001

pays d'origine

BREEAM Contribution Credit

**Bronze Level (Version 3.1)**

**Certifié Par Un Organisme Tiers Conformément Aux Normes ISO14044, ISO 14025 & EN15804**

**Take Back Policy Offered For All Taskworx Products**

**Certifié**

**United Kingdom**

**Certificate of Approval  
Schools/Offices/Health/Industrial Shed  
Retail**

## Well V2 Contribution Credit

X08 Réduction des matières dangereuses Partie 1 : Optimiser la limitation des matières dangereuses – 1 pt

**C2C Bronze Level (Version 3.1)**

X10 Réduction des composés volatils Partie 1 (A) : Optimisation de la gestion des composés organiques volatils (COV) – 1 pt

**C2C Bronze Level (Version 3.1)**

X10 Volatile Compound Reduction  
Part 2: Manage Semi-Volatile Organic Compounds (SVOCs) Optimization

**C2C Bronze Level (Version 3.1)**

X11 Contrôle des émissions à long terme Partie 2 : Optimisation des revêtements de sol – 1 pt

**M1> Emissions Class For Building Material**

X13 Précaution accrue à l'égard des matériaux Partie 1 : Choisir des matériaux optimisés – max 2 pts

**C2C Bronze Level (Version 3.1)**

X14 Transparence des matériaux Partie 1 : Promouvoir l'optimisation de la divulgation des composants – max 2 pts

**C2C Bronze Level (Version 3.1)**

## Contribution À La Certification Leed

MR Credit: Building Product Disclosure and Optimisation  
Environmental Product Declarations - Option 1: Environmental Product Declaration (EPD)

**3rd Party Certified in Accordance with ISO14044, ISO14025 & EN15804**

MR Credit: Building Product Disclosure and Optimisation  
Material Ingredients - Option 1: Material Ingredient Reporting

**C2C Bronze Level (Version 3.1)**

MR Credit: Building Product Disclosure and Optimisation  
Material Ingredients - Option 2: Material Ingredient Optimization

**C2C Bronze Level (Version 3.1)**

"Crédit EQ : matériaux faibles émissions  
Option 1 : calculs par catégorie de produit"

**Certified**

## Air Quality

M1

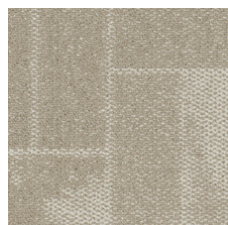
**Certified**

## Memberships

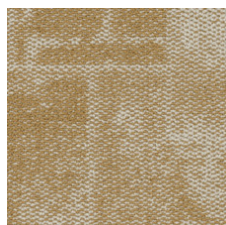
WGBC Framework  
UKGBC  
Emirates Green Building Council  
Chemsec

**WGBC Framework**  
**UKGBC**  
**Emirates Green Building Council**  
**Chemsec**

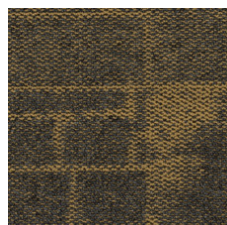
## Indice De Réflexion Lumineuse



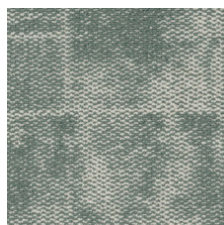
Oatmeal 04111  
LRV 31.9 | L\* 63.25



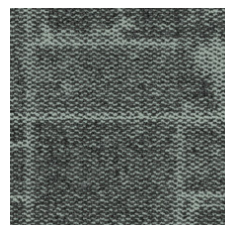
Brushed Gold 04210  
LRV 24.6 | L\* 56.69



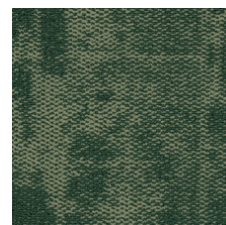
Midnight Brushed Gold  
04211  
LRV 8.1 | L\* 34.2



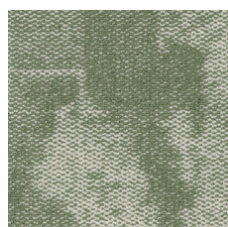
Mineral 04327  
LRV 22.9 | L\* 54.94



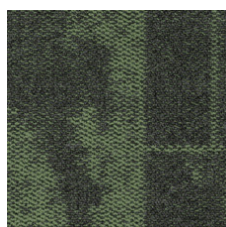
Midnight Mineral 04328  
LRV 12.5 | L\* 42.02



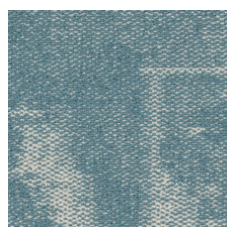
Racing Green 04334  
LRV 6.2 | L\* 29.9



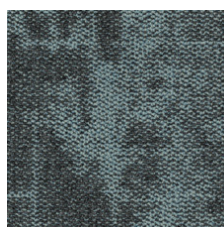
Sage 04375  
LRV 22.3 | L\* 54.39



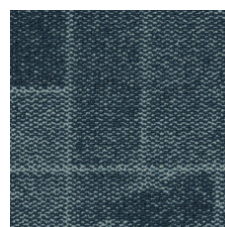
Midnight Sage 04376  
LRV 7.5 | L\* 32.97



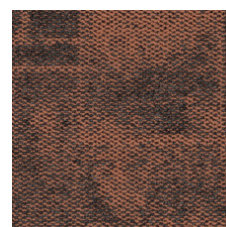
Sky 04411  
LRV 24.9 | L\* 56.96



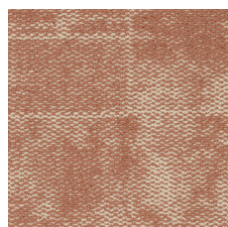
Midnight Sky 04412  
LRV 9.6 | L\* 37.08



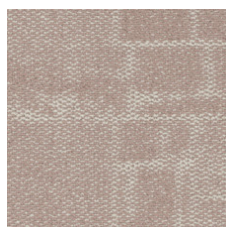
Denim 04486  
LRV 10 | L\* 37.8



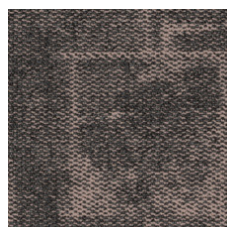
Midnight Apricot 04674  
LRV 7.8 | L\* 33.46



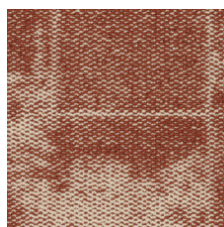
Apricot 04675  
LRV 23.4 | L\* 55.49



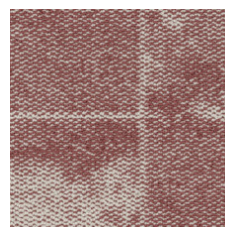
Powder Pink 04800  
LRV 30.1 | L\* 61.73



Midnight Powder Pink  
04801  
LRV 11.4 | L\* 40.3



Copper 04865  
LRV 18.9 | L\* 50.61



Rosewood 04870  
LRV 18.8 | L\* 50.47

## Informations Supplémentaires

\*\*Manufactured in ISO 9001 certified facility. Meets or exceeds all local and national regulations in country of manufacture.

[Installation Guidelines](#)

[Maintenance Guidelines](#)

[Limitée commerciale de 15 ans](#)

Specifications are subject to nominal manufacturing variance. Material supply and/or manufacturing processes may necessitate changes without notice.

This product is an exclusive design and may not be duplicated in any manner. Use of this design in the creation of another product design is also strictly prohibited.

Visit [shawcontract.com/testing](http://shawcontract.com/testing) for more information.

