

Translate Tile

Product Type	Carpet Tile	
Collection	Dialogue	
Style Number	5T408	
Construction	Multi-Level Pattern Loop	
Dye Method	100% Solution Dyed	
Primary Backing	Synthetic	
Secondary Backing	Ecoworx® Tile	
Protective Treatments	SSP® Shaw Soil Protection	
Recommended Adhesive	LokDots, 3000 Carpet Tile 4 Gallon, 3000 Carpet Tile 1 Gallon, 4151 Multi-Use Carpet Tile 4 Gallon, 5000 Carpet Tile 1 Gallon, LokWorx Adhesive Tabs, 3800 Indoor Outdoor Carpet Tile 4 Gallon or 5000 Carpet Tile 4 Gallon	
	u.s.	metric
Product Size	9 in x 36 in	23 cm x 91 cm
Area Per Box	45 ft²	4.18 m²
Pieces Per Box	20 pcs	
Gauge	1/10 in	39.4 per 10 cm
Stitches	9.0 per in	36.5 per 10 cm
Finished Pile Thickness	0.092 in	2.34 mm
Average Density	7826 oz/yd³	0.29 g/cm³
Total Thickness	0.266 in	6.76 mm
Tufted Weight	20 oz/yd²	678.1 g/m²



Recommended Installation Method



Data + Testing

Radiant Panel (Astm E648)	Class I
Nbs Smoke	Less Than 450
Electrostatic Propensity	Less Than 3.5 kv
Cri Green Label Plus (Glp)	GLP9968
Pill Test	Pass*
Ada Compliance	>0.6, Meets the recommended static coefficient of friction for ADA walking surfaces and accessible routes***

Test Reports may be included or listed by the manufacturing/inventory style number as opposed to the noted selling style number.

Warranties

Lifetime Commercial Limited

Coordinating Products

LVT: **Type, Coded**
Carpet Tile: **Face To Face Tile, Spoken Tile, Written Tile, Subtext Tile**

Attributes + Certifications

Certifications Below Apply Exclusively To The Carpet Tile Rug Itself And Not The Lokworx Tabs Adhesive

Health & Wellbeing

Material Ingredient Transparency	Cradle to Cradle Certified® Silver Level (Version 4.0) Health Product Declaration (HPD) 1,000 ppm Disclosure Living Building Challenge (LBC) Free of Red List Chemicals Declare LBC Compliant NSF 140 Gold
Indoor Air Quality	CRI Green Label Plus (GLP) GLP9968

Climate Impact

Environmental Product Declaration (EPD)	3rd Party Certified in Accordance with ISO14044, ISO14025 & EN15804
Embodied Carbon (Cradle to Gate)	3.75 kg CO₂/m²
Life-Cycle Carbon Emissions	Carbon Neutral
Total Recycled Content	57% (Pre-Consumer 57% Post-Consumer 0%)
Product Packaging	100% Recyclable

Global Product Assessment

Singapore Green Label | Certified
CE Marking (EN 14041) | 3rd Party Certified
Environmental Guarantee* | Re[turn] Reclamation Program* | Through Our Environmental Guarantee, Shaw Pledges to Transport And Recycle Any Ecoworx Carpet.
Country of Origin | USA**

Well V2 Contribution Credit

X08 Hazardous Material Reduction Part 1: Limit Hazardous Materials Optimization – 1 pt	C2C Silver Level (Version 4.0)
X10 Volatile Compound Reduction Part 1 (A): Manage Volatile Organic Compounds (VOCs) Optimization – 1 pt	C2C Silver Level (Version 4.0)
X11 Long Term Emissions Control Part 2: Flooring Optimization – 1 pt	Green Label Plus Certification: GLP9968
X13 Enhanced Material Precaution Part 1: Select Optimized Materials Optimization – max 2 pts	C2C Silver Level (Version 4.0)
X14 Material Transparency Part 1: Promote Ingredient Disclosure Optimization – max 2 pts	C2C Silver Level (Version 4.0)

Green Leed Contribution Credit

MR Credit: Building Product Disclosure and Optimization
Environmental Product Declarations - Option 1: Environmental Product Declaration (EPD)

MR Credit: Building Product Disclosure and Optimization
Material Ingredients - Option 1: Material Ingredient Reporting

MR Credit: Building Product Disclosure and Optimization
Material Ingredients - Option 2: Material Ingredient Optimization

MR Credit: Building Product Disclosure and Optimization
Sourcing of Raw Materials - Option 2: Leadership Extraction Practices

EQ Credit: Low Emitting Materials
Option 1: Product Category Calculations

MR Credit: Interiors Life-Cycle Impact Reduction
Option 3: Design for Flexibility

3rd Party Certified in Accordance with ISO 14044, ISO 14025 & EN15804

C2C Silver Level (Version 4.0) or HPD (Version 2.1)

C2C Silver Level (Version 4.0)

Environmental Guarantee: Re[turn] Reclamation Program* | Through Our Environmental Guarantee, Shaw Pledges to Transport And Recycle Any Ecoworx® Carpet.

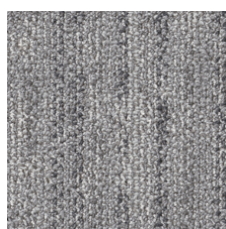
Green Label Plus Certification: GLP9968

Ecoworx® Tile with Lokdots Installation System

Available Colorways



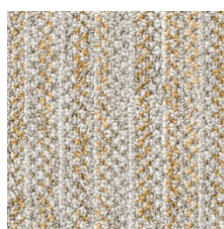
Listen 05100
LRV 28.5 | L* 61.2



Connection 05105
LRV 20.1 | L* 51.94



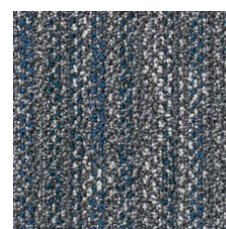
Story 05111
LRV 14.1 | L* 44.31



Script 05210
LRV 31 | L* 62.48



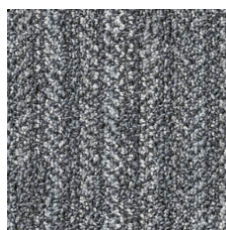
Verse 05375
LRV 5.9 | L* 29.13



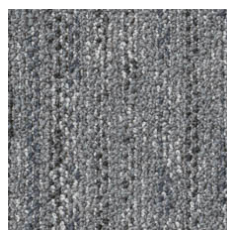
Quip 05485
LRV 10.7 | L* 39



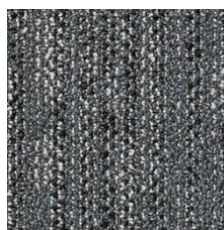
Exclaim 05500
LRV 6.5 | L* 30.63



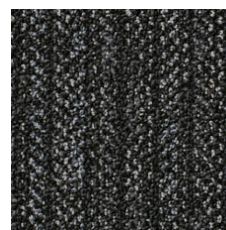
Phrase 05510
LRV 12.8 | L* 42.44



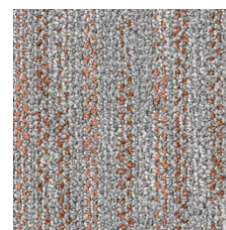
Message 05515
LRV 15.8 | L* 46.79



Express 05580
LRV 10.9 | L* 39.39



Correspond 05585
LRV 5.8 | L* 28.84



Narrative 05675
LRV 20.9 | L* 52.82

Additional Information

* To learn more about the recyclability of our products and our re[TURN], please visit shawcontract.com/sustainability.

**Meets or exceeds all local and national regulations in country of manufacture.

***This carpet is manufactured to be ADA compliant, but to be fully ADA compliant, the end-user must ensure the carpet is adhered to the floor and installed as outlined in the ADA standards.

[Installation Guidelines](#)

[Maintenance Guidelines](#)

Specifications are subject to nominal manufacturing variance. Material supply and/or manufacturing processes may necessitate changes without notice.

This product is an exclusive design and may not be duplicated in any manner. Use of this design in the creation of another product design is also strictly prohibited.

Visit shawcontract.com/testing for more information.

