

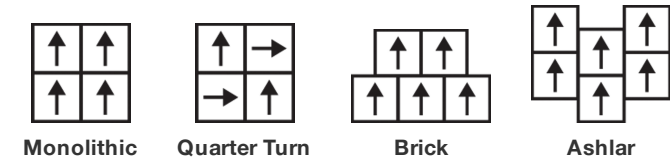
## Embark Tile

상품 유형	Carpet Tile
수집	Material Matters
스타일 번호	5T433
구성	다중 레벨 루프식
섬유	Ecosolution Q® 나일론
기본 백업	합성
보조 백업	Ecoworx® 타일
보호 처리	SSP® Shaw 흠먼지 보호

	u.s.	metric
제품 크기	24 in x 24 in	61 cm x 61 cm
상자 당 면적	48 ft <sup>2</sup>	4.46 m <sup>2</sup>
상자 당 조각	12 pcs	
계량기	1/12 in	47.2 per 10 cm
스티치	9.0 per in	35.0 per 10 cm
완성 된 말뚝 두께	0.105 in	2.67 mm
평균 밀도	5829 oz/yd <sup>3</sup>	0.216 g/cm <sup>3</sup>
총 두께	0.247 in	6.27 mm
슬을다는 무게	17 oz/yd <sup>2</sup>	576.4 g/m <sup>2</sup>



## 권장 설치 방법



## 데이터 + 테스트

복사 패널 (Astm E648)	<b>Class I</b>
Nbs 연기	<b>Less Than 450</b>
정전기 성향	<b>Less Than 3.5 kv</b>
Cri 그린 라벨 플러스 (Glp)	<b>GLP1263</b>
알약 테스트	<b>Pass*</b>
Ada 준수	<b>0.6 이상, ADA 보행 노면과 이용 가능한 경로의 권장 마찰계수 충족***</b>

Test Reports may be included or listed by the manufacturing/inventory style number as opposed to the noted selling style number.

## 보증

종신 상용 제한

코디네이팅 제품

Carpet Tile: **Wander Tile, Vapor Tile, Haze Tile, Fog Tile**

속성 + 인증

Certifications Below Apply Exclusively To The Carpet Tile Rug Itself And Not The Lokworx Tabs Adhesive

Health & Wellbeing

Material Ingredient Transparency

Cradle to Cradle Certified® | Silver Level (Version 4.0)  
Health Product Declaration (HPD) | 1,000ppm 노출  
Living Building Challenge (LBC) | 적색목록 화학물질 없음  
Declare | LBC 규격  
NSF 140 | 골드  
Greenhealth Approved | Yes  
CRI Green Label Plus (GLP) | GLP1263

Indoor Air Quality

Climate Impact

Environmental Product Declaration (EPD)

ISO14044, ISO14025 및 EN15804에 따라 타사 인증 획득

Total Recycled Content

37% (Pre-Consumer 37% | Post-Consumer 0%)

Product Packaging

100% 재활용 가능

Global Product Assessment

Singapore Green Label | 인증  
CE Marking (EN 14041) | 타사 인증 획득  
Environmental Guarantee\* | Re[turn] Reclamation Program\* | Through Our Environmental Guarantee, Shaw Pledges to Transport And Recycle Any Ecoworx Carpet.  
Country of Origin\*\* | Imported

녹색의 공헌 기여 크레딧

MR 크레딧 : 제품 공개 및 최적화 구축  
환경 제품 선언-옵션 1 : 환경 제품 선언 (EPD)

3rd Party Certified in Accordance with ISO14044, ISO14025 & EN15804

MR 크레딧 : 제품 공개 및 최적화 구축  
재료 성분-옵션 1 : 재료 성분보고

HPD (Version 2.1) or C2C Silver Level (Version 4.0)

MR 크레딧 : 제품 공개 및 최적화 구축  
재료 성분-옵션 2 : 재료 성분 최적화

C2C Silver Level (Version 4.0)

MR Credit: Building Product Disclosure and Optimization  
Sourcing of Raw Materials - Option 2: Leadership Extraction Practices

Environmental Guarantee: Re[turn] Reclamation Program\* | Through Our Environmental Guarantee, Shaw Pledges to Transport And Recycle Any Ecoworx Carpet.

EQ 크레딧 : 저 발광 재료  
옵션 1 : 제품 범주 계산

Green Label Plus Certification: GLP9968

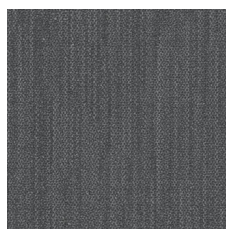
MR Credit: Interiors Life-Cycle Impact Reduction  
Option 3: Design for Flexibility

Ecoworx Tile with Lokdots Installation System

## Available Colorways



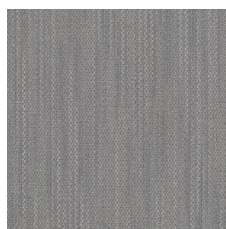
Whisper 37111



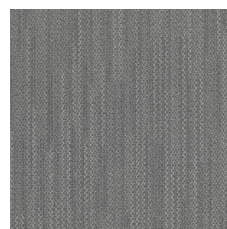
Dreamy 37481



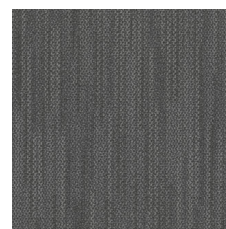
Myth 37505



Delicate 37515



Airy 37530



Smoke 37557

## 추가 정보

\* To learn more about the recyclability of our products and our re[TURN], please visit [shawcontract.com/sustainability](https://shawcontract.com/sustainability).

\*\*Meets or exceeds all local and national regulations in country of manufacture.

\*\*\*This carpet is manufactured to be ADA compliant, but to be fully ADA compliant, the end-user must ensure the carpet is adhered to the floor and installed as outlined in the ADA standards.

[Installation Guidelines](#)

[Maintenance Guidelines](#)

Specifications are subject to nominal manufacturing variance. Material supply and/or manufacturing processes may necessitate changes without notice.

This product is an exclusive design and may not be duplicated in any manner. Use of this design in the creation of another product design is also strictly prohibited.

Visit [shawcontract.com/testing](https://shawcontract.com/testing) for more information.



**Declare.**



**PVC-Free**



Corporate Headquarters +1 800 257 7429 | +1 706 532 7984 | Atlanta +1 404 853 7429 | Bengaluru +91 80 6773 0202 | Beijing +86 10 6568 588 | Chicago +1 312 467 1331 | Dubai +971 4 584 6956 | Hong Kong +852 2623 0371 | Latin America (Miami) +1 305 827 5912 | London +44 207 961 4120 | Los Angeles +1 800 233 1614 | Melbourne +61 3 9939 8543 | Mexico City +55 5010 7600 | Mumbai +91 22 6284 5050 | Nantong +86 400 800 7429 | New York +1 212 953 7429 | Paris +33 (0) 1 81 22 44 39 | San Francisco +1 415 955 1920 | Santiago +562 2431 5000 x 550 | São Paulo +55 11 3071 1702 | Shanghai +86 21 3338 4000 | Singapore +65 6733 1811 | Sydney +61 800 556 302