

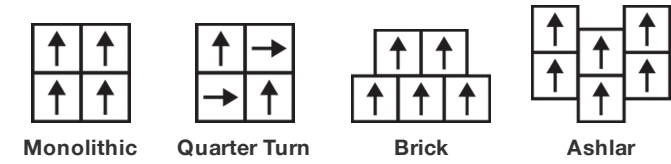
Wander Tile

产品类别	Carpet Tile
系列	Material Matters
款型编号	5T434
结构	高低圈绒
纤维	Ecosolution Q®尼龙
第一层底背	合成的
第二层底背	Ecoworx®块毯
防护处理	SSP®萧氏污渍防护成分

	u.s.	metric
产品尺寸	24 in x 24 in	61 cm x 61 cm
每箱面积	48 ft²	4.46 m²
每盒件数	12 pcs	
隔距	1/12 in	47.2 per 10 cm
针数	9.0 per in	35.0 per 10 cm
成品簇绒厚度	0.102 in	2.59 mm
平均密度	6000 oz/yd³	0.222 g/cm³
总厚度	0.237 in	6.02 mm
簇绒重量	17 oz/yd²	576.4 g/m²



铺装建议



数据 + 测试

辐射板 (astm E648)	Class I
Nbs烟雾	Less Than 450
静电倾向	Less Than 3.5 kv
Cri绿色标签 (glp)	GLP1263
药物测试	Pass*
Ada标准	≥0.5, 符合ADA建议的地面和走廊静摩擦系数***

Test Reports may be included or listed by the manufacturing/inventory style number as opposed to the noted selling style number.

质保

终身商用有限质保

搭配产品

Carpet Tile: **Embark Tile, Vapor Tile, Haze Tile, Fog Tile**

属性+认证

Certifications Below Apply Exclusively To The Carpet Tile Rug Itself And Not The Lokworx Tabs Adhesive

Health & Wellbeing

Material Ingredient Transparency

Cradle to Cradle Certified® | Silver Level (Version 4.0)
Health Product Declaration (HPD) | 1,000 ppm披露
Living Building Challenge (LBC) | 不含红榜化学限制品
Declare | 符合LBC标准
NSF 140 | 金
CRI Green Label Plus (GLP) | GLP1263

Indoor Air Quality

Climate Impact

Environmental Product Declaration (EPD)

通过ISO14044、ISO14025和EN15804等第三方认证
10.7 (based upon 19.6 oz face weight) kg CO₂/m²
37% (Pre-Consumer 37% | Post-Consumer 0%)
100%可回收

Embodied Carbon (Cradle to Gate)

Total Recycled Content

Product Packaging

Global Product Assessment

Singapore Green Label | 认证
CE Marking (EN 14041) | 第三方认证
Environmental Guarantee* | Re[turn] Reclamation Program* | Through Our Environmental Guarantee, Shaw Pledges to Transport And Recycle Any Ecoworx Carpet.
Country of Origin | 中国**

Well V2 Contribution Credit

X08 Hazardous Material Reduction Part 1: Limit Hazardous Materials Optimization – 1 pt

C2C Silver Level (Version 4.0)

X10 Volatile Compound Reduction Part 1 (A): Manage Volatile Organic Compounds (VOCs) Optimization – 1 pt

C2C Silver Level (Version 4.0)

X11 Long Term Emissions Control Part 2: Flooring Optimization – 1 pt

Green Label Plus Certification: GLP9968

X13 Enhanced Material Precaution Part 1: Select Optimized Materials Optimization – max 2 pts

C2C Silver Level (Version 4.0)

X14 Material Transparency Part 1: Promote Ingredient Disclosure Optimization – max 2 pts

C2C Silver Level (Version 4.0)

绿色leed贡献信用

MR Credit：建立产品披露和优化
环境产品声明-选项1：环境产品声明（EPD）

3rd Party Certified in Accordance with ISO14044, ISO14025 & EN15804

MR Credit：建立产品披露与优化
材料成分-选项1：材料成分报告

HPD (Version 2.1) or C2C Silver Level (Version 4.0)

MR Credit：建立产品披露与优化
材料成分-选项2：材料成分优化

C2C Silver Level (Version 4.0)

MR Credit：建立产品披露与优化
原材料采购-选项2：领导力提取实践

Environmental Guarantee: Re[turn] Reclamation Program* | Through Our Environmental Guarantee, Shaw Pledges to Transport And Recycle Any Ecoworx® Carpet.

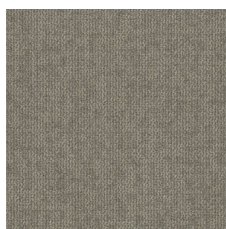
EQ信用：低排放材料
选项1：产品类别计算

Green Label Plus Certification: GLP9968

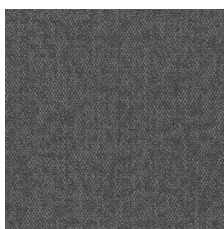
MR Credit: Interiors Life-Cycle Impact Reduction
Option 3: Design for Flexibility

Ecoworx® Tile with Lokdots Installation System

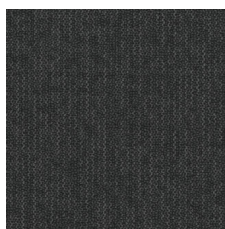
Available Colorways



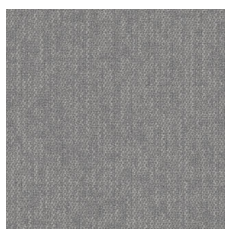
Whisper 37111



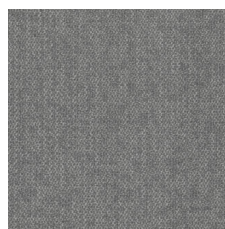
Dreamy 37481



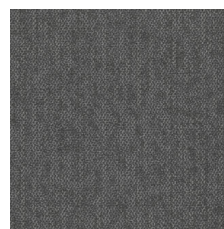
Myth 37505



Delicate 37515



Airy 37530



Smoke 37557

附加信息

* To learn more about the recyclability of our products and our re[TURN], please visit shawcontract.com/sustainability.

**Meets or exceeds all local and national regulations in country of manufacture.

***This carpet is manufactured to be ADA compliant, but to be fully ADA compliant, the end-user must ensure the carpet is adhered to the floor and installed as outlined in the ADA standards.

[Installation Guidelines](#)

[Maintenance Guidelines](#)

Specifications are subject to nominal manufacturing variance. Material supply and/or manufacturing processes may necessitate changes without notice.

This product is an exclusive design and may not be duplicated in any manner. Use of this design in the creation of another product design is also strictly prohibited.

Visit shawcontract.com/testing for more information.



Declare.



PVC-Free