

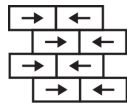
Haze Tile

상품 유형	Carpet Tile
수집	Material Matters
스타일 번호	5T436
구성	다중 레벨 루프식
섬유	Ecosolution Q® 나일론
기본 백업	합성
보조 백업	Ecoworx® 타일
보호 처리	SSP® Shaw 흠먼지 보호

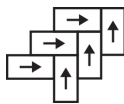
	u.s.	metric
제품 크기	18 in x 36 in	46 cm x 91 cm
상자 당 면적	45 ft ²	4.18 m ²
상자 당 조각	10 pcs	
계량기	1/12 in	47.2 per 10 cm
스티치	10.0 per in	39.0 per 10 cm
완성 된 말뚝 두께	0.098 in	2.49 mm
평균 밀도	6612 oz/yd ³	0.245 g/cm ³
총 두께	0.244 in	6.2 mm
슬을다는 무게	18 oz/yd ²	610.3 g/m ²



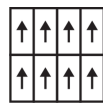
권장 설치 방법



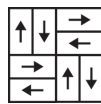
Brick



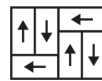
Herringbone



Monolithic



Basketweave



Half Basketweave



Boxed In

데이터 + 테스트

복사 패널 (Astm E648)

Class I

Nbs 연기

Less Than 450

정전기 성향

Less Than 3.5 kv

Cri 그린 라벨 플러스 (Glp)

GLP1263

알약 테스트

Pass*

Ada 준수

0.6 이상, ADA 보행 노면과 이용 가능한 경로의 권장 마찰계수 충족***

Test Reports may be included or listed by the manufacturing/inventory style number as opposed to the noted selling style number.

보증

중신 상용 제한

코디네이팅 제품

Carpet Tile: **Embark Tile, Wander Tile, Vapor Tile, Fog Tile**

속성 + 인증

Certifications Below Apply Exclusively To The Carpet Tile Rug Itself And Not The Lokworx Tabs Adhesive

Health & Wellbeing

Material Ingredient Transparency

Cradle to Cradle Certified® | Silver Level (Version 4.0)
Health Product Declaration (HPD) | 1,000ppm 노출
Living Building Challenge (LBC) | 적색목록 화학물질 없음
Declare | LBC 규격
NSF 140 | 골드

Indoor Air Quality

CRI Green Label Plus (GLP) | GLP1263

Climate Impact

Environmental Product Declaration (EPD)

ISO 14044, ISO 14025 및 EN15804에 따라 타사 인증 획득

Embodied Carbon (Cradle to Gate)

10.7 (based upon 19.6 oz face weight) kg CO₂/m²

Total Recycled Content

36% (Pre-Consumer 36% | Post-Consumer 0%)

Product Packaging

100% 재활용 가능

Global Product Assessment

Singapore Green Label | 인증**CE Marking (EN 14041) | 타사 인증 획득**

Environmental Guarantee* | Re[turn] Reclamation Program* | Through Our Environmental Guarantee, Shaw Pledges to Transport And Recycle Any Ecoworx Carpet.

Country of Origin | Imported**

Well V2 Contribution Credit

X08 Hazardous Material Reduction Part 1: Limit Hazardous Materials Optimization – 1 pt

C2C Silver Level (Version 4.0)

X10 Volatile Compound Reduction Part 1 (A): Manage Volatile Organic Compounds (VOCs) Optimization – 1 pt

C2C Silver Level (Version 4.0)

X11 Long Term Emissions Control Part 2: Flooring Optimization – 1 pt

Green Label Plus Certification: GLP9968

X13 Enhanced Material Precaution Part 1: Select Optimized Materials Optimization – max 2 pts

C2C Silver Level (Version 4.0)

X14 Material Transparency Part 1: Promote Ingredient Disclosure Optimization – max 2 pts

C2C Silver Level (Version 4.0)

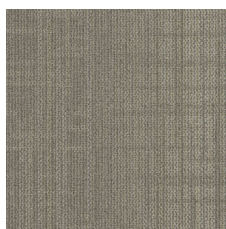
녹색의 공헌 기여 크레딧

MR 크레딧 : 제품 공개 및 최적화 구축
환경 제품 선언-옵션 1 : 환경 제품 선언 (EPD)**3rd Party Certified in Accordance with ISO14044, ISO14025 & EN15804**MR 크레딧 : 제품 공개 및 최적화 구축
재료 성분-옵션 1 : 재료 성분보고**HPD (Version 2.1) or C2C Silver Level (Version 4.0)**MR 크레딧 : 제품 공개 및 최적화 구축
재료 성분-옵션 2 : 재료 성분 최적화**C2C Silver Level (Version 4.0)**MR 크레딧 : 제품 공개 및 최적화 구축
원료 소싱-옵션 2 : 리더십 추출 사례

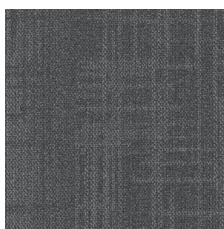
Environmental Guarantee: Re[turn] Reclamation Program* | Through Our Environmental Guarantee, Shaw Pledges to Transport And Recycle Any Ecoworx® Carpet.

Green Label Plus Certification: GLP9968EQ 크레딧 : 저 발광 재료
옵션 1 : 제품 범주 계산**Ecworx® Tile with Lokdots Installation System**MR Credit: Interiors Life-Cycle Impact Reduction
Option 3: Design for Flexibility

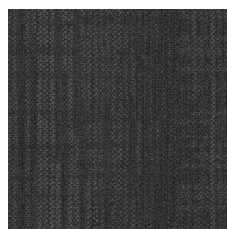
Available Colorways



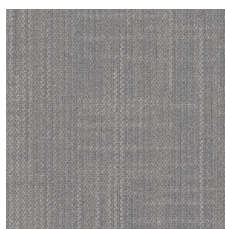
Whisper 37111



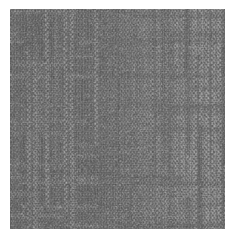
Dreamy 37481



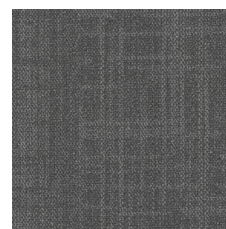
Myth 37505



Delicate 37515



Airy 37530



Smoke 37557

추가 정보

* To learn more about the recyclability of our products and our re[TURN], please visit shawcontract.com/sustainability.

**Meets or exceeds all local and national regulations in country of manufacture.

***This carpet is manufactured to be ADA compliant, but to be fully ADA compliant, the end-user must ensure the carpet is adhered to the floor and installed as outlined in the ADA standards.

[Installation Guidelines](#)

[Maintenance Guidelines](#)

Specifications are subject to nominal manufacturing variance. Material supply and/or manufacturing processes may necessitate changes without notice.

This product is an exclusive design and may not be duplicated in any manner. Use of this design in the creation of another product design is also strictly prohibited.

Visit shawcontract.com/testing for more information.



PVC-Free