

Collective I Tile

Product Type	Carpet Tile
Collection	Collective
Style Number	5T438
Construction	Multi-Level Pattern Loop
Dye Method	100% Solution Dyed
Primary Backing	Synthetic
Secondary Backing	Ecoworx® Tile
Protective Treatments	SSP® Shaw Soil Protection
Recommended Adhesive	LokDots, 3000 Carpet Tile 4 Gallon, 3000 Carpet Tile 1 Gallon, 4151 Multi-Use Carpet Tile 4 Gallon, 5000 Carpet Tile 1 Gallon, LokWorx Adhesive Tabs, 3800 Indoor Outdoor Carpet Tile 4 Gallon or 5000 Carpet Tile 4 Gallon

	u.s.	metric
Product Size	9 in x 36 in	23 cm x 91 cm
Area Per Box	45 ft²	4.18 m²
Pieces Per Box	20 pcs	
Gauge	1/12 in	47.2 per 10 cm
Stitches	8.5 per in	33.0 per 10 cm
Finished Pile Thickness	0.087 in	2.21 mm
Average Density	7862 oz/yd³	0.291 g/cm³
Total Thickness	0.252 in	6.4 mm
Tufted Weight	19 oz/yd²	644.2 g/m²



Recommended Installation Method



Data + Testing

Radiant Panel (Astm E648)	Class I
Nbs Smoke	Less Than 450
Electrostatic Propensity	Less Than 3.5 kv
Cri Green Label Plus (Glp)	USA GLP9968   China GLP1263
Pill Test	Pass*
Ada Compliance	>0.6, Meets the recommended static coefficient of friction for ADA walking surfaces and accessible routes***

Test Reports may be included or listed by the manufacturing/inventory style number as opposed to the noted selling style number.

Warranties

Lifetime Commercial Limited

Coordinating Products

Carpet Tile: **Collective II Tile, Collective III Tile, Collective IV Tile, Collective V Tile, Hand In Hand Tile, In Common Tile, Side By Side Tile, All Together Tile, Alongside Tile, In Tune Tile**

Attributes + Certifications

Certifications Below Apply Exclusively To The Carpet Tile Rug Itself And Not The Lokworx Tabs Adhesive

Health & Wellbeing

Material Ingredient Transparency	<a href="#">Cradle to Cradle Certified®   Silver Level (Version 4.0)</a> <a href="#">Health Product Declaration (HPD)   1,000 ppm Disclosure</a> <a href="#">Living Building Challenge (LBC)   Free of Red List Chemicals Declare   LBC Compliant</a> <a href="#">Declare   LBC Compliant</a> <a href="#">NSF 140   Gold</a> <a href="#">CRI Green Label Plus (GLP)   GLP9968</a>
Indoor Air Quality	

Climate Impact

Environmental Product Declaration (EPD)	<a href="#">3rd Party Certified in Accordance with ISO14044, ISO14025 &amp; EN15804</a>
Embodied Carbon (Cradle to Gate)	<a href="#">3.73 kg CO<sub>2</sub>/m<sup>2</sup></a>
Life-Cycle Carbon Emissions	<a href="#">Carbon Neutral</a>
Total Recycled Content	<a href="#">57% (Pre-Consumer 57%   Post-Consumer 0%)</a>
Product Packaging	<a href="#">100% Recyclable</a>

Global Product Assessment

	<a href="#">Singapore Green Label   Certified</a> <a href="#">CE Marking (EN 14041)   3rd Party Certified</a> <a href="#">Environmental Guarantee*   Re[turn] Reclamation Program*   Through Our Environmental Guarantee, Shaw Pledges to Transport And Recycle Any Ecoworx Carpet.</a> <a href="#">Country of Origin**   USA &amp; China</a>
--	--

Well V2 Contribution Credit

X08 Hazardous Material Reduction Part 1: Limit Hazardous Materials Optimization – 1 pt	<a href="#">C2C Silver Level (Version 4.0)</a>
X10 Volatile Compound Reduction Part 1 (A): Manage Volatile Organic Compounds (VOCs) Optimization – 1 pt	<a href="#">C2C Silver Level (Version 4.0)</a>
X11 Long Term Emissions Control Part 2: Flooring Optimization – 1 pt	<a href="#">Green Label Plus Certification: GLP9968</a>
X13 Enhanced Material Precaution Part 1: Select Optimized Materials Optimization – max 2 pts	<a href="#">C2C Silver Level (Version 4.0)</a>
X14 Material Transparency Part 1: Promote Ingredient Disclosure Optimization – max 2 pts	<a href="#">C2C Silver Level (Version 4.0)</a>

## Green Leed Contribution Credit

MR Credit: Building Product Disclosure and Optimization  
Environmental Product Declarations - Option 1: Environmental Product Declaration (EPD)

MR Credit: Building Product Disclosure and Optimization  
Material Ingredients - Option 1: Material Ingredient Reporting

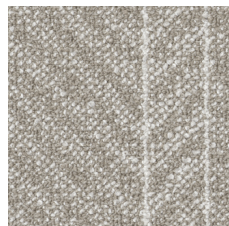
MR Credit: Building Product Disclosure and Optimization  
Material Ingredients - Option 2: Material Ingredient Optimization

MR Credit: Building Product Disclosure and Optimization  
Sourcing of Raw Materials - Option 2: Leadership Extraction Practices

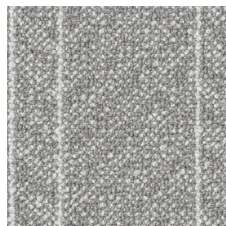
EQ Credit: Low Emitting Materials  
Option 1: Product Category Calculations

MR Credit: Interiors Life-Cycle Impact Reduction  
Option 3: Design for Flexibility

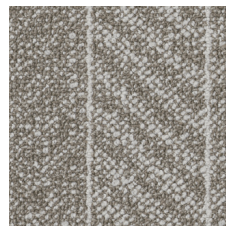
## Available Colorways



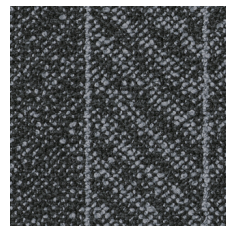
Beige 38100  
LRV 29.1 | L\* 60.87



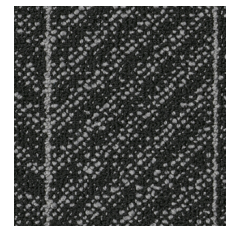
Greige 38105  
LRV 29.1 | L\* 60.91



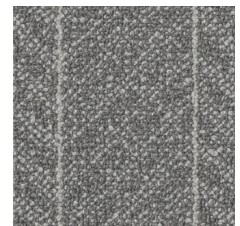
Tan 38111  
LRV 18.4 | L\* 50



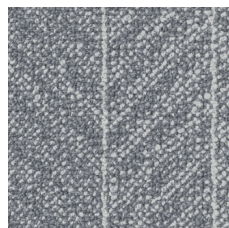
Charcoal 38500  
LRV 5.5 | L\* 28.04



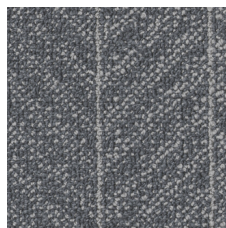
Black 38505  
LRV 6.1 | L\* 29.75



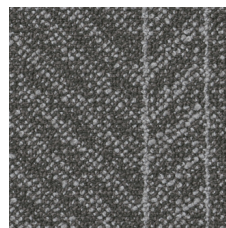
Warm Grey 38518  
LRV 16.7 | L\* 47.92



Cool Grey 38535  
LRV 19.9 | L\* 51.74



Grey 38580  
LRV 11.7 | L\* 40.78



Taupe 38761  
LRV 8.9 | L\* 35.75

## Additional Information

\* To learn more about the recyclability of our products and our re[TURN], please visit [shawcontract.com/sustainability](https://shawcontract.com/sustainability).

\*\*Meets or exceeds all local and national regulations in country of manufacture.

\*\*\*This carpet is manufactured to be ADA compliant, but to be fully ADA compliant, the end-user must ensure the carpet is adhered to the floor and installed as outlined in the ADA standards.

[Installation Guidelines](#)

[Maintenance Guidelines](#)

Specifications are subject to nominal manufacturing variance. Material supply and/or manufacturing processes may necessitate changes without notice.

This product is an exclusive design and may not be duplicated in any manner. Use of this design in the creation of another product design is also strictly prohibited.

Visit [shawcontract.com/testing](https://shawcontract.com/testing) for more information.

