

Collective I Tile

| | |
|-----------------------|---|
| Product Type | Carpet Tile |
| Collection | Collective |
| Style Number | 5T438 |
| Construction | Multi-Level Pattern Loop |
| Fiber | Ecosolution Q100® Nylon |
| Dye Method | 100% Solution Dyed |
| Primary Backing | Synthetic |
| Secondary Backing | Ecoworx® Tile |
| Protective Treatments | SSP® Shaw Soil Protection |
| Recommended Adhesive | LokDots, 3000 Carpet Tile 4 Gallon, 3000 Carpet Tile 1 Gallon, 4151 Multi-Use Carpet Tile 4 Gallon, 5000 Carpet Tile 1 Gallon, LokWorx Adhesive Tabs, 3800 Indoor Outdoor Carpet Tile 4 Gallon or 5000 Carpet Tile 4 Gallon |

| | | |
|-------------------------|--------------|----------------|
| | u.s. | metric |
| Product Size | 9 in x 36 in | 23 cm x 91 cm |
| Area per Carton | 45 ft² | 4.18 m² |
| Pieces per Carton | 20 pcs | |
| Gauge | 1/12 in | 47.2 per 10 cm |
| Stitches | 8.5 per in | 33.0 per 10 cm |
| Finished Pile Thickness | 0.087 in | 2.21 mm |
| Average Density | 7862 oz/yd³ | 0.291 g/cm³ |
| Total Thickness | 0.252 in | 6.4 mm |
| Tufted Weight | 19 oz/yd² | 644.2 g/m² |



Recommended Installation Method



Performance + Testing

| | |
|----------------------------|--|
| Radiant Panel | Class I |
| NBS Smoke | Less Than 450 |
| Electrostatic Propensity | Less Than 3.5 kv |
| CRI Green Label Plus (GLP) | USA GLP9968 China GLP1263 |
| Pill Test | Pass* |
| ADA Compliance | >0.6, meets the recommended static coefficient of friction for ADA walking surfaces and accessible routes*** |

Test Reports may be included or listed by the manufacturing/inventory style number as opposed to the noted selling style number.

Warranties

Lifetime Commercial Limited Warranty

Coordinating Products

Carpet Tile: **Collective II Tile, Collective III Tile, Collective IV Tile, Collective V Tile, Hand In Hand Tile, In Common Tile, Side By Side Tile, All Together Tile, Alongside Tile, In Tune Tile**

Diversity & Inclusion

We promote supplier participation that is reflective of Shaw Industries' diverse customer base and local community. We believe having a strong Supplier Diversity Program is strategic for bringing more innovation to our businesses and opening new markets for growth.

Material Health & Environmental Certifications

Certifications below apply exclusively to the carpet tile rug itself and not the LokWorx Tabs adhesive

Health & Wellbeing

| | |
|----------------------------------|---|
| Material Ingredient Transparency | Cradle to Cradle Certified® Silver Level (Version 4.0) Health Product Declaration (HPD) 1,000 ppm Disclosure Living Building Challenge (LBC) Free of Red List Chemicals Declare LBC Compliant Declare LBC Compliant NSF 140 Gold |
| Indoor Air Quality | CRI Green Label Plus (GLP) GLP9968 |

Climate Impact

| | |
|---|--|
| Environmental Product Declaration (EPD) | 3rd Party Certified in Accordance with ISO14044, ISO14025 & EN15804 |
| Embodied Carbon (Cradle to Gate) | 3.73 kg CO₂/m² |
| Life-Cycle Carbon Emissions | Carbon Neutral |
| Total Recycled Content | 57% (Pre-Consumer 57% Post-Consumer 0%) |
| Product Packaging | 100% Recyclable |

Global Product Assessment

| | |
|--|--|
| | Singapore Green Label Certified |
| | CE Marking (EN 14041) 3rd Party Certified |
| | Environmental Guarantee* Re[turn] Reclamation Program* Through Our Environmental Guarantee, Shaw Pledges to Transport And Recycle Any Ecoworx Carpet. |
| | Country of Origin** USA & China |

WELL V2 Contribution Credit

| | |
|--|--|
| X08 Hazardous Material Reduction Part 1: Limit Hazardous Materials Optimization | C2C Silver Level (Version 4.0) |
| X10 Volatile Compound Reduction Part 1 (A): Manage Volatile Organic Compounds (VOCs) Optimization | C2C Silver Level (Version 4.0) |
| X11 Long Term Emissions Control Part 2: Flooring Optimization | Green Label Plus Certification: GLP9968 |
| X13 Enhanced Material Precaution Part 1: Select Optimized Materials Optimization | C2C Silver Level (Version 4.0) |
| X14 Material Transparency Part 1: Promote Ingredient Disclosure Optimization | C2C Silver Level (Version 4.0) |

Leed v4 Contribution Credits

MR Credit: Building Product Disclosure and Optimization
Environmental Product Declarations - Option 1: Environmental Product Declaration (EPD)

MR Credit: Building Product Disclosure and Optimization
Material Ingredients - Option 1: Material Ingredient Reporting

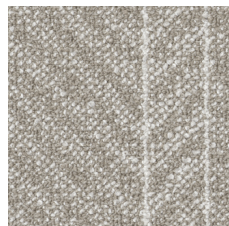
MR Credit: Building Product Disclosure and Optimization
Material Ingredients - Option 2: Material Ingredient Optimization

MR Credit: Building Product Disclosure and Optimization
Sourcing of Raw Materials - Option 2: Leadership Extraction Practices

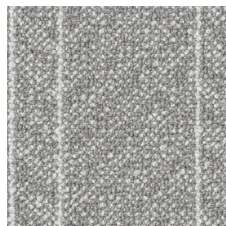
EQ Credit: Low Emitting Materials
Option 1: Product Category Calculations

MR Credit: Interiors Life-Cycle Impact Reduction
Option 3: Design for Flexibility

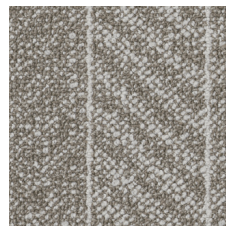
Available Colorways



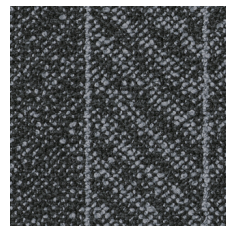
Beige 38100
LRV 29.1 | L* 60.87



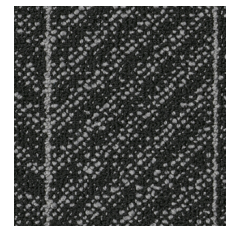
Greige 38105
LRV 29.1 | L* 60.91



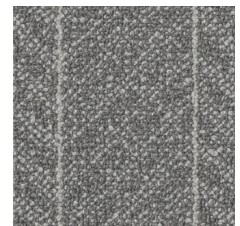
Tan 38111
LRV 18.4 | L* 50



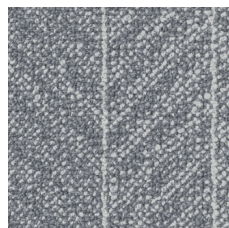
Charcoal 38500
LRV 5.5 | L* 28.04



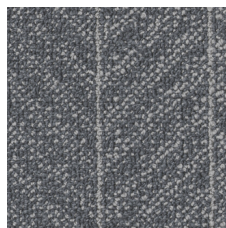
Black 38505
LRV 6.1 | L* 29.75



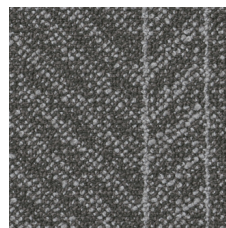
Warm Grey 38518
LRV 16.7 | L* 47.92



Cool Grey 38535
LRV 19.9 | L* 51.74



Grey 38580
LRV 11.7 | L* 40.78



Taupe 38761
LRV 8.9 | L* 35.75

Additional Information

* To learn more about the recyclability of our products and our re[TURN], please visit shawcontract.com/sustainability.

**Meets or exceeds all local and national regulations in country of manufacture.

***This carpet is manufactured to be ADA compliant, but to be fully ADA compliant, the end-user must ensure the carpet is adhered to the floor and installed as outlined in the ADA standards.

[Installation Guidelines](#)

[Maintenance Guidelines](#)

Specifications are subject to nominal manufacturing variance. Material supply and/or manufacturing processes may necessitate changes without notice.

This product is an exclusive design and may not be duplicated in any manner. Use of this design in the creation of another product design is also strictly prohibited.

Visit shawcontract.com/testing for more information.

