

Preserve Tile

製品型	Carpet Tile
コレクション	Canopy
スタイルナンバー	5T423
建設	マルチレベル パターンループ
染色法	100% 原液着色
一次バックイング	合成
二次バックイング	Ecoworx®タイル
保護治療	SSP@shaw 土壌保護保証
推奨接着剤	LokDots, 3000 Carpet Tile 4 Gallon, 3000 Carpet Tile 1 Gallon, 4151 Multi-Use Carpet Tile 4 Gallon, 5000 Carpet Tile 1 Gallon, LokWorx Adhesive Tabs, 3800 Indoor Outdoor Carpet Tile 4 Gallon or 5000 Carpet Tile 4 Gallon

	u.s.	metric
商品のサイズ	9 in x 36 in	23 cm x 91 cm
ボックスあたりの面積	45 ft ²	4.18 m ²
ボックスあたりの個数	20 pcs	
ゲージ	1/10 in	39.4 per 10 cm
ステッチ	8.0 per in	31.5 per 10 cm
完成した杭の厚さ	0.109 in	2.77 mm
平均密度	7927 oz/yd ³	0.293 g/cm ³
総厚	0.297 in	7.54 mm
房状の重量	24 oz/yd ²	813.7 g/m ²



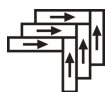
推奨インストール方法



Ashlar



Brick



Herringbone



Monolithic



Stagger

データ + テスト

放射パネル (astm E648)

Class I

Nbs煙

Less Than 450

静電気の傾向

Less Than 3.5 kv

Cri Green Label Plus (glp)

USA GLP9968 | China GLP1263

錠剤テスト

Pass*

Adaコンプライアンス

>0.6、ADA 歩行面およびアクセス可能ルート用推奨静摩擦係数の基準に合致***

Test Reports may be included or listed by the manufacturing/inventory style number as opposed to the noted selling style number.

コーディネート商品

Carpet Tile: **Elevate Tile, Balcony Tile, Habitat Tile, Suspend Tile, Above Tile, Weathered Tile, Wildwood Tile, Weathered Color Tile**
Broadloom: **Ground, Below**

属性+認定

Certifications Below Apply Exclusively To The Carpet Tile Rug Itself And Not The Lokworx Tabs Adhesive

Health & Wellbeing

Material Ingredient Transparency

Cradle to Cradle Certified® | Silver Level (Version 4.0)
Health Product Declaration (HPD) | 1,000 ppm 開示
Living Building Challenge (LBC) | レッドリスト記載化学物質無配合
Declare | LBC 準拠
Declare | LBC 準拠
NSF 140 | ゴールド
CRI Green Label Plus (GLP) | GLP9968

Indoor Air Quality

Climate Impact

Environmental Product Declaration (EPD)

ISO14044、ISO14025 および EN15804 に基づく 第三者認証取得

Embodied Carbon (Cradle to Gate)

3.83 kg CO₂/m²

Life-Cycle Carbon Emissions

Carbon Neutral

Total Recycled Content

59% (Pre-Consumer 59% | Post-Consumer 0%)

Product Packaging

100% リサイクル可能

Global Product Assessment

Singapore Green Label | 認証取得
CE Marking (EN 14041) | 第三者認証取得
Environmental Guarantee* | Re[turn] Reclamation Program* | Through Our Environmental Guarantee, Shaw Pledges to Transport And Recycle Any Ecoworx Carpet.
Country of Origin | USA & China**

Well V2 Contribution Credit

X08 Hazardous Material Reduction Part 1: Limit Hazardous Materials Optimization – 1 pt

C2C Silver Level (Version 4.0)

X10 Volatile Compound Reduction Part 1 (A): Manage Volatile Organic Compounds (VOCs) Optimization – 1 pt

C2C Silver Level (Version 4.0)

X11 Long Term Emissions Control Part 2: Flooring Optimization – 1 pt

Green Label Plus Certification: GLP9968

X13 Enhanced Material Precaution Part 1: Select Optimized Materials Optimization – max 2 pts

C2C Silver Level (Version 4.0)

X14 Material Transparency Part 1: Promote Ingredient Disclosure Optimization – max 2 pts

C2C Silver Level (Version 4.0)

グリーンリード貢献クレジット

MRクレジット：製品の開示と最適化の構築
環境製品宣言-オプション1：環境製品宣言 (EPD)

MRクレジット：製品の開示と最適化の構築
材料成分-オプション1：材料成分レポート

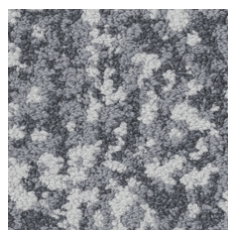
MRクレジット：製品の開示と最適化の構築
材料成分-オプション2：材料成分の最適化

MRクレジット：製品の開示と最適化の構築
原材料の調達-オプション2：リーダーシップの抽出実践

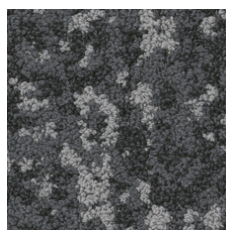
EQクレジット：低排出材料
オプション1：製品カテゴリの計算

MR Credit: Interiors Life-Cycle Impact Reduction
Option 3: Design for Flexibility

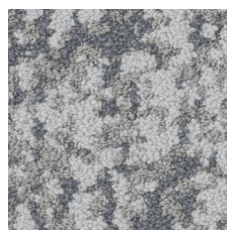
Available Colorways



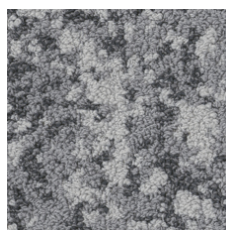
Still 88481



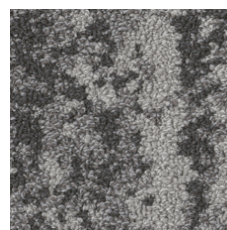
Shadow 88500



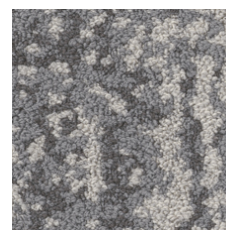
Quiet 88535



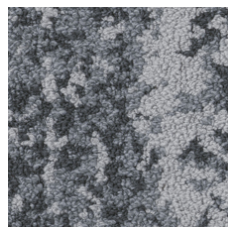
Path 88555



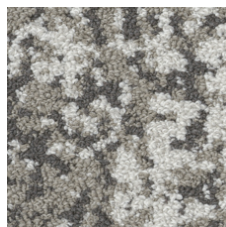
Shade 88557



Calm 88595



Filter 88596



Branch 88760

追加情報

* To learn more about the recyclability of our products and our re[TURN], please visit shawcontract.com/sustainability.

**Meets or exceeds all local and national regulations in country of manufacture.

***This carpet is manufactured to be ADA compliant, but to be fully ADA compliant, the end-user must ensure the carpet is adhered to the floor and installed as outlined in the ADA standards.

[Installation Guidelines](#)

[Maintenance Guidelines](#)

Specifications are subject to nominal manufacturing variance. Material supply and/or manufacturing processes may necessitate changes without notice.

This product is an exclusive design and may not be duplicated in any manner. Use of this design in the creation of another product design is also strictly prohibited.

Visit shawcontract.com/testing for more information.



Declare.



PVC-Free

Corporate Headquarters +1 800 257 7429 | +1 706 532 7984 | Atlanta +1 404 853 7429 | Bengaluru +91 80 6773 0202 | Beijing +86 10 6568 588 | Chicago +1 312 467 1331 | Dubai +971 4 584 6956 | Hong Kong +852 2623 0371 | London +44 207 961 4120 | Los Angeles +1 800 233 1614 | Melbourne +61 3 9939 8543 | Mexico City +55 5010 7600 | Mumbai +91 22 6284 5050 | Nantong +86 400 800 7429 | New York +1 212 953 7429 | Paris +33 (0) 1 81 22 44 39 | San Francisco +1 415 955 1920 | Shanghai +86 21 3338 4000 | Singapore +65 6733 1811 | Sydney +61 800 556 302

© 2025 Shaw Industries Group, Inc., a Berkshire Hathaway Company
April 18, 2025

3 of 3