

## Wildwood Tile

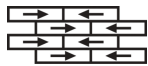
Tipo De Producto	<b>Alfombra Modular</b>	
Colección	<b>Canopy</b>	
Número De Estilo	<b>5T425</b>	
Construcción	<b>Patrón Con Bucle Multinivel</b>	
Método De Teñido	<b>100% Solution Dyed</b>	
Base Primaria	<b>Sintético</b>	
Base Secundaria	<b>Base Ecoworx®</b>	
Tratamientos Protectores	<b>SSP® Shaw Protección Para El Piso</b>	
Adhesivo Recomendado	<b>LokDots, 3000 Carpet Tile 4 Gallon, 3000 Carpet Tile 1 Gallon, 4151 Multi-Use Carpet Tile 4 Gallon, 5000 Carpet Tile 1 Gallon, LokWorx Adhesive Tabs, 3800 Indoor Outdoor Carpet Tile 4 Gallon or 5000 Carpet Tile 4 Gallon</b>	
	u.s.	metric
Tamaño Del Producto	<b>9 in x 36 in</b>	<b>23 cm x 91 cm</b>
Área Por Caja	<b>45 ft²</b>	<b>4.18 m²</b>
Piezas Por Caja	<b>20 pcs</b>	
Gauge	<b>1/10 in</b>	<b>39.4 per 10 cm</b>
Puntadas	<b>8.0 per in</b>	<b>31.5 per 10 cm</b>
Espesor De La Fibra Terminada	<b>0.118 in</b>	<b>3 mm</b>
Densidad Media	<b>7322 oz/yd³</b>	<b>0.271 g/cm³</b>
Espesor Total	<b>0.313 in</b>	<b>7.95 mm</b>
Peso De La Fibra	<b>24 oz/yd²</b>	<b>813.7 g/m²</b>



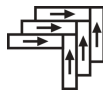
## Método De Instalación Recomendado



Ashlar



Brick



Herringbone



Monolithic



Stagger

## Datos + Pruebas

Panel Radiante (Astm E648)

Nbs Humo

Propensión Electrostática

Cri Green Label Plus (Glp)

Prueba De Pastillas (Pill)

Ada Compliance

**Class I**

**Less Than 450**

**Less Than 3.5 kv**

**USA GLP9968 | China GLP1263**

**Pass\***

**≥0.6, Cumple con las recomendaciones para el coeficiente de fricción estática para superficies transitables ADA y rutas accesibles\*\*\***

Test Reports may be included or listed by the manufacturing/inventory style number as opposed to the noted selling style number.

Productos Que Combinan

Carpet Tile: **Elevate Tile, Balcony Tile, Habitat Tile, Suspend Tile, Above Tile, Preserve Tile, Weathered Tile, Weathered Color Tile**  
Broadloom: **Ground, Below**

Atributos + Certificaciones

Certifications Below Apply Exclusively To The Carpet Tile Rug Itself And Not The Lokworx Tabs Adhesive

Health & Wellbeing

Material Ingredient Transparency	<b>Cradle to Cradle Certified®   Silver Level (Version 4.0)</b> <b>Health Product Declaration (HPD)   Divulgado 1,000 ppm</b> <b>Living Building Challenge (LBC)   Libre De Químicos Red List</b> <b>Declare   Compatible LBC</b> <b>Declare   Compatible LBC</b> <b>NSF 140   Oro</b>
Indoor Air Quality	<b>CRI Green Label Plus (GLP)   GLP9968</b>
Climate Impact	
Environmental Product Declaration (EPD)	<b>Certificado Tercerizado De Acuerdo Con La Norma ISO14044, ISO14025 &amp; EN15804</b>
Embodied Carbon (Cradle to Gate)	<b>3.83 kg CO<sub>2</sub>/m<sup>2</sup></b>
Life-Cycle Carbon Emissions	<b>Carbon Neutral</b>
Total Recycled Content	<b>59% (Pre-Consumer 59%   Post-Consumer 0%)</b>
Product Packaging	<b>100% Recyclable</b>
Global Product Assessment	<b>Singapore Green Label   Certificado</b> <b>CE Marking (EN 14041)   Certificado Tercerizado</b> <b>Environmental Guarantee*   Re[turn] Reclamation Program*   Through Our Environmental Guarantee, Shaw Pledges to Transport And Recycle Any Ecoworx Carpet.</b> <b>Country of Origin**   USA &amp; China</b>

Well V2 Contribution Credit

X08 Hazardous Material Reduction Part 1: Limit Hazardous Materials Optimization – 1 pt	<b>C2C Silver Level (Version 4.0)</b>
X10 Volatile Compound Reduction Part 1 (A): Manage Volatile Organic Compounds (VOCs) Optimization – 1 pt	<b>C2C Silver Level (Version 4.0)</b>
X11 Long Term Emissions Control Part 2: Flooring Optimization – 1 pt	<b>Green Label Plus Certification: GLP9968</b>
X13 Enhanced Material Precaution Part 1: Select Optimized Materials Optimization – max 2 pts	<b>C2C Silver Level (Version 4.0)</b>
X14 Material Transparency Part 1: Promote Ingredient Disclosure Optimization – max 2 pts	<b>C2C Silver Level (Version 4.0)</b>

## Contribución Para Créditos Leed

Crédito MR: Divulgación y optimización de productos de construcción  
Declaraciones ambientales de productos - Opción 1: Declaración ambiental de productos (EPD)

Crédito MR: Divulgación y optimización de productos de construcción  
Ingredientes de materiales - Opción 1: Informe de ingredientes de los materiales

Crédito MR: Divulgación y optimización de productos de construcción  
Ingredientes de materiales - Opción 2: Optimización de ingredientes de los materiales

Crédito MR: Divulgación y optimización de productos de construcción  
Abastecimiento de materias primas - Opción 2: Prácticas en liderazgo de extracción

Crédito EQ: Materiales de baja emisión  
Opción 1: Cálculos de categoría de producto

MR Credit: Interiors Life-Cycle Impact Reduction  
Option 3: Design for Flexibility

**3rd Party Certified in Accordance with ISO 14044, ISO 14025 & EN15804**

**C2C Silver Level (Version 4.0) or HPD (Version 2.1)**

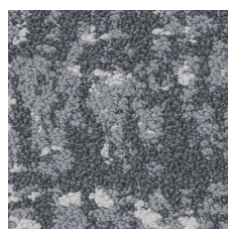
**C2C Silver Level (Version 4.0)**

**Environmental Guarantee: Re[turn] Reclamation Program\* | Through Our Environmental Guarantee, Shaw Pledges to Transport And Recycle Any Ecoworx® Carpet.**

**Green Label Plus Certification: GLP9968**

**Ecoworx® Tile with Lokdots Installation System**

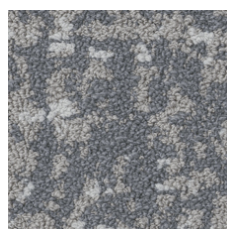
## Available Colorways



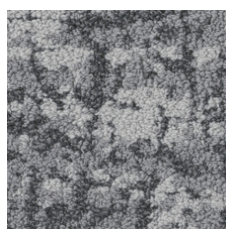
Still 88481



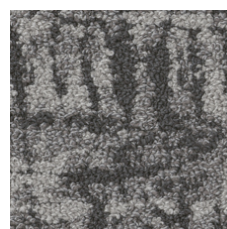
Shadow 88500



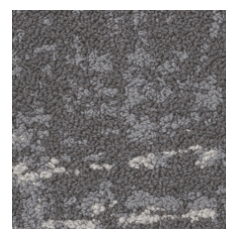
Quiet 88535



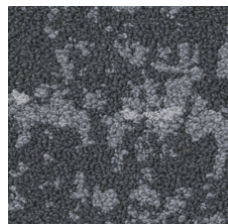
Path 88555



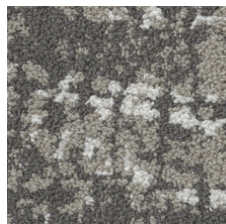
Shade 88557



Calm 88595



Filter 88596



Branch 88760

## Información Adicional

\* To learn more about the recyclability of our products and our re[TURN], please visit [shawcontract.com/sustainability](https://shawcontract.com/sustainability).

\*\*Meets or exceeds all local and national regulations in country of manufacture.

\*\*\*This carpet is manufactured to be ADA compliant, but to be fully ADA compliant, the end-user must ensure the carpet is adhered to the floor and installed as outlined in the ADA standards.

[Installation Guidelines](#)

[Maintenance Guidelines](#)

Specifications are subject to nominal manufacturing variance. Material supply and/or manufacturing processes may necessitate changes without notice.

This product is an exclusive design and may not be duplicated in any manner. Use of this design in the creation of another product design is also strictly prohibited.

Visit [shawcontract.com/testing](https://shawcontract.com/testing) for more information.

