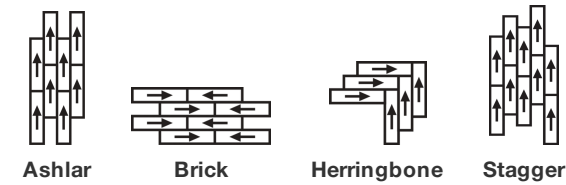


Stitched

Collection	Bottlefloor	
Style Number	5T456	
Dye Method	100% Solution Dyed	
Recommended Adhesive	4151 Multi-Use Carpet Tile 4 Gallon	
	u.s.	metric
Product Size	12 in x 48 in	30 cm x 122 cm
Area Per Carton	72 ft²	6.69 m²
Pieces Per Carton	18 pcs	
Total Thickness	0.157 in	3.99 mm
Tufted Weight	75 oz/yd²	2542.9 g/m²



Recommended Installation Method



Manufactured with a unique needle punch process. BottleFloor may show subtle shade variation and fiber blending from tile to tile.

Data + Testing

Pill Test	Pass
Radiant Panel	Class I
Nbs Smoke	Less Than 450
Cri Green Label Plus (Glp)	GLP0082
Ada Compliance	>0.6, Meets the recommended static coefficient of friction for ADA walking surfaces and accessible routes***

Test Reports may be included or listed by the manufacturing/inventory style number as opposed to the noted selling style number.

Coordinating Products

Carpet Tile: **Felted**

Material Health & Environmental Certifications

Health & Wellbeing

Material Ingredient Transparency

Cradle to Cradle Certified® | Bronze Level (Version 3.1)
NSF 140 | Platinum

Indoor Air Quality

CRI Green Label Plus (GLP) | GLP0082

Climate Impact

Environmental Product Declaration (EPD)

3rd Party Certified in Accordance with ISO14040, ISO14044, ISO21930, ISO14025 & EN15804

Product Packaging

100% Recyclable

Global Product Assessment

Environmental Guarantee* | Re[turn] Reclamation Program* | Through Our Environmental Guarantee, Shaw Pledges to Transport And Recycle Any Reworx Flooring Product Within The United States And Canada At No Cost to The Customer.

Country of Origin** | USA

Green Leed Contribution Credit

MR Credit: Building Product Disclosure and Optimization
Environmental Product Declarations - Option 1: Environmental Product Declaration (EPD)

3rd Party Certified in Accordance with ISO14040, ISO14044, ISO21930, ISO14025 & EN15804

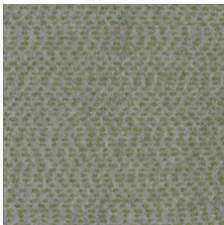
MR Credit: Building Product Disclosure and Optimization
Material Ingredients - Option 2: Material Ingredient Optimization

C2C Bronze Level (Version 3.1)

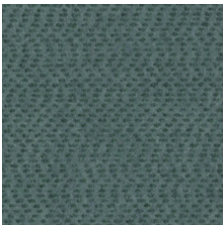
EQ Credit: Low Emitting Materials
Option 1: Product Category Calculations

Green Label Plus Certification: GLP0082

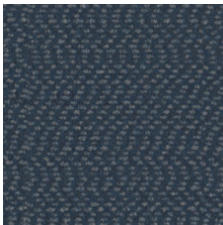
Available Colorways



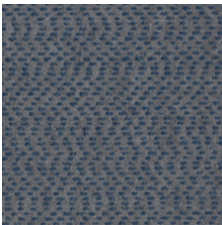
Verdure Stitch 56328



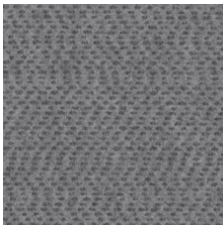
Frock Stitch 56397



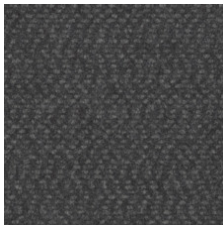
Indigo Stitch 56488



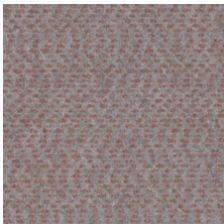
Dungaree Stitch 56490



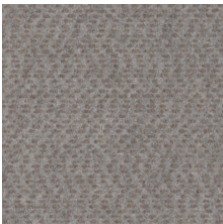
Marled Stitch 56502



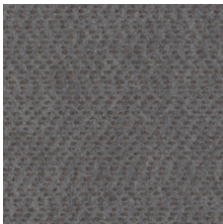
Textile Stitch 56582



Velour Stitch 56667



Twill Stitch 56762



Tricot Stitch 56764

Additional Information

* To learn more about the recyclability of our products and our re[TURN], please visit shawcontract.com/sustainability.

**Meets or exceeds all local and national regulations in country of manufacture. (Manufactured in an ISO 9001 & ISO 14001 certified facility or equivalent)

***This carpet is manufactured to be ADA compliant, but to be fully ADA compliant, the end-user must ensure the carpet is adhered to the floor and installed as outlined in the ADA standards.

[Installation Guidelines](#)

[Maintenance Guidelines](#)

Specifications are subject to nominal manufacturing variance. Material supply and/or manufacturing processes may necessitate changes without notice.

This product is an exclusive design and may not be duplicated in any manner. Use of this design in the creation of another product design is also strictly prohibited.

Visit shawcontract.com/testing for more information.



PVC-Free

Corporate Headquarters +1 800 257 7429 | +1 706 532 7984 | **Atlanta** +1 404 853 7429 | **Bengaluru** +91 80 6773 0202 | **Beijing** +86 10 6568 588 | **Chicago** +1 312 467 1331 | **Dubai** +971 4 584 6956 | **Hong Kong** +852 2623 0371 | **Latin America (Miami)** +1 305 827 5912 | **London** +44 207 961 4120 | **Los Angeles** +1 800 233 1614 | **Melbourne** +61 3 9939 8543 | **Mexico City** +55 5010 7600 | **Mumbai** +91 22 6284 5050 | **Nantong** +86 400 800 7429 | **New York** +1 212 953 7429 | **Paris** +33 (0) 1 81 22 44 39 | **San Francisco** +1 415 955 1920 | **Santiago** +562 2431 5000 x 550 | **São Paulo** +55 11 3071 1702 | **Shanghai** +86 21 3338 4000 | **Singapore** +65 6733 1811 | **Sydney** +1 800 556 302