

Accent Strataworx

产品类别	Carpet Tile	
系列	Encounter	
款型编号	5T461	
结构	高低圈绒	
纤维	Solution Q®尼龙	
染色方式	100 %原液染色	
第一层底背	合成的	
第二层底背	Strataworx®块毯	
防护处理	SSP®萧氏污渍防护成分	
	u.s.	metric
产品尺寸	24 in x 24 in	61 cm x 61 cm
每箱面积	80 ft²	7.43 m²
每盒件数	20 pcs	
隔距	1/12 in	47.2 per 10 cm
针数	8.5 per in	33.0 per 10 cm
成品簇绒厚度	0.078 in	1.98 mm
平均密度	7385 oz/yd³	0.273 g/cm³
总厚度	0.228 in	5.79 mm
簇绒重量	16 oz/yd²	542.5 g/m²



铺装建议



数据 + 测试

辐射板 (astm E648)	Class I
Nbs烟雾	Less Than 450
静电倾向	Less Than 3.5 kv
药物测试	Pass*
Ada标准	≥0.5, 符合ADA建议的地面和走廊静摩擦系数***

搭配产品

Carpet Tile: **Hub Accent Strataworx, Hub Accent Tile**

属性+认证

Certifications Below Apply Exclusively To The Carpet Tile Rug Itself And Not The Lokworx Tabs Adhesive

Health & Wellbeing

Material Ingredient Transparency

Cradle to Cradle Certified® | 银级 (3.1版)
Health Product Declaration (HPD) | 1,000 ppm披露
Living Building Challenge (LBC) | 不含红榜化学限制品
Declare | 符合LBC标准
NSF 140 | 金

Climate Impact

Environmental Product Declaration (EPD)

Total Recycled Content

通过ISO14044、ISO14025和EN15804等第三方认证
23% (Pre-Consumer 23% | Post-Consumer 0%)

Global Product Assessment

Singapore Green Label | 认证
Environmental Guarantee* | Re[turn] Reclamation Program* | Pickup & Delivery Available
Country of Origin** | 中国

Well V2 Contribution Credit

X08 Hazardous Material Reduction Part 1: Limit Hazardous Materials Optimization – 1 pt

“摇篮到摇篮”银级 (3.1版)

X10 Volatile Compound Reduction Part 1 (A): Manage Volatile Organic Compounds (VOCs) Optimization – 1 pt

“摇篮到摇篮”银级 (3.1版)

X11 Long Term Emissions Control Part 2: Flooring Optimization – 1 pt

绿色标签+认证： GLP2671

X13 Enhanced Material Precaution Part 1: Select Optimized Materials Optimization – max 2 pts

“摇篮到摇篮”银级 (3.1版)

X14 Material Transparency Part 1: Promote Ingredient Disclosure Optimization – max 2 pts

“摇篮到摇篮”银级 (3.1版)

绿色leed贡献信用

MR Credit：建立产品披露和优化
环境产品声明-选项1：环境产品声明 (EPD)

3rd Party Certified in Accordance with ISO14044, ISO14025 & EN15804

MR Credit：建立产品披露与优化
材料成分-选项1：材料成分报告

HPD (Version 2.1) or C2C Silver Level (Version 3.1)

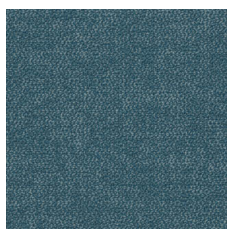
MR Credit：建立产品披露与优化
材料成分-选项2：材料成分优化

“摇篮到摇篮”银级 (3.1版)

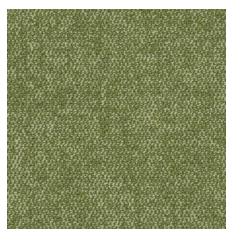
EQ信用：低排放材料
选项1：产品类别计算

绿色标签+认证： GLP2671

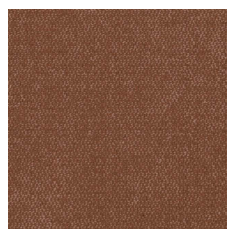
Available Colorways



Aqua 61323



Green 61370



Terracotta 61675

附加信息

* To learn more about the recyclability of our products and our Environmental Guarantee, please visit shawcontract.com/sustainability.

**Meets or exceeds all local and national regulations in country of manufacture.

***This carpet is manufactured to be ADA compliant, but to be fully ADA compliant, the end-user must ensure the carpet is adhered to the floor and installed as outlined in the ADA standards.

[Installation Guidelines](#)

[Maintenance Guidelines](#)

Specifications are subject to nominal manufacturing variance. Material supply and/or manufacturing processes may necessitate changes without notice.

This product is an exclusive design and may not be duplicated in any manner. Use of this design in the creation of another product design is also strictly prohibited.

Visit shawcontract.com/testing for more information.



Declare.



PVC-Free

Corporate Headquarters +1 800 257 7429 | +1 706 532 7984 | Atlanta +1 404 853 7429 | Bengaluru +91 80 6773 0202 | Beijing +86 10 6568 588 | Chicago +1 312 467 1331 | Dubai +971 4 584 6956 | Hong Kong +852 2623 0371 | London +44 207 961 4120 | Los Angeles +1 800 233 1614 | Melbourne +61 3 9939 8543 | Mexico City +55 5010 7600 | Mumbai +91 22 6284 5050 | Nantong +86 400 800 7429 | New York +1 212 953 7429 | Paris +33 (0) 1 81 22 44 39 | San Francisco +1 415 955 1920 | Shanghai +86 21 3338 4000 | Singapore +65 6733 1811 | Sydney +61 800 556 302

© 2025 Shaw Industries Group, Inc., a Berkshire Hathaway Company
July 2, 2025

3 of 3