

## Illusion Taskworx® Tile

Style Number	<b>5T464</b>	
Collection	<b>Kindred</b>	
Product Type	<b>Carpet Tile</b>	
Construction	<b>Standard</b>	<b>Data + Performance</b>
Type of Manufacture	<b>ISO 2424</b>	<b>tufted 1/10"   39.4 per 10cm</b>
Aspect	<b>ISO 2424</b>	<b>Multi-Level Pattern Loop</b>
Dye Method	<b>EN 994</b>	<b>100% Solution Dyed</b>
Dimensions	<b>EN 994</b>	<b>50 cm x 50 cm   20 tiles (5 m²) per box</b>
Primary Backing	<b>ISO 2424</b>	<b>Pet Non-Woven</b>
Secondary Backing	<b>ISO 2424</b>	<b>Taskworx® Tile   Polymer Modified Bitumen</b>
Pile Fibre Composition	<b>ISO 2424</b>	<b>Eco Solution Q® Polyamide 6</b>
Total Thickness	<b>ISO 1765</b>	<b>6.3 mm</b>
Effective Pile Thickness	<b>ISO 1766</b>	<b>2.1 mm</b>
Total Mass	<b>ISO 8543</b>	<b>4397 g/m²</b>
Nominal Total Pile Mass	<b>ISO 2424</b>	<b>644 g/m</b>
Effective Pile Mass	<b>ISO 8543</b>	<b>244 g/m²</b>
Pile Density	<b>ISO 8543</b>	<b>0.113 g/cm³</b>
Total Recycled Content		<b>49% (pre-consumer 49%   post-consumer 0%)</b>

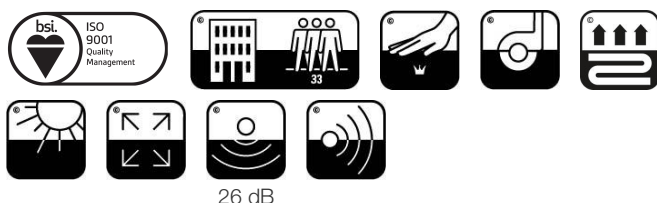
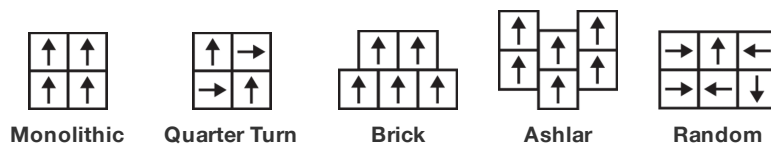


### Performance

Number of Tufts	<b>ISO 1763</b>	<b>129,000 /m²   32.8 per 10cm</b>
Electrostatic Propensity	<b>ISO 6356</b>	<b>≤ 2.0 kv (Stroll Test)</b>
Use Classification	<b>EN 1307</b>	<b>33 Commercial Heavy</b>
Luxury Class	<b>EN 1307</b>	<b>LC1</b>
Dimensional Stability	<b>EN 986</b>	<b>≤ 0.2%</b>
Impact Sound Insulation	<b>ISO 10140</b>	<b>26 Db*</b>
Sound Absorption Classification	<b>ISO 354/11654</b>	<b>0.15 Aw   Class E*</b>
Thermal Resistance m² K/W	<b>ISO 8302</b>	<b>0.066 M² K/W Tog 0.66</b>
Dry Slip Resistance	<b>ISO 13893</b>	<b>Pass / No Pulled Loops</b>
Colour Fastness To Light	<b>ISO 105-B02</b>	<b>&gt;6</b>
Flammability	<b>EN 13501-1</b>	<b>Bfl-S1 (Adhered Testing)</b>
Castor Chair	<b>EN 985</b>	<b>≥2.4 Continuous Use</b>

**15 Year Commercial Limited Warranty** subject to installation in full accordance with the manufacturer's instructions and a regular effective cleaning and maintenance programme. Second location warranties are available with the use of non-adhesive IOBAC Magtabs and Tabit accessories.

### Recommended Installation Method



Corporate Headquarters +1 800 257 7429 | +1 706 532 7984 | Atlanta +1 404 853 7429 | Bengaluru +91 80 6773 0202 | Beijing +86 10 6568 588 | Chicago +1 312 467 1331 | Dubai +971 4 584 6956 | Hong Kong +852 2623 0371 | London +44 207 961 4120 | Los Angeles +1 800 233 1614 | Melbourne +61 3 9939 8543 | Mexico City +55 5010 7600 | Mumbai +91 22 6284 5050 | Nantong +86 400 800 7429 | New York +1 212 953 7429 | Paris +33 (0) 1 81 22 44 39 | San Francisco +1 415 955 1920 | Shanghai +86 21 3338 4000 | Singapore +65 6733 1811 | Sydney +61 800 556 302

Coordinating Products

Carpet Tile: **Memory Comfortworx® Tile, Dream Comfortworx® Tile, Belong Comfortworx® Tile, Together Comfortworx® Tile, Illusion Comfortworx® Tile, Belong Taskworx® Hexagon Tile, Together Hexagon Taskworx® Tile, Dream Taskworx® Tile, Belong Taskworx® Tile, Memory Taskworx® Tile, Together Taskworx® Tile**

Product Transparency

Shaw Contract is dedicated to providing clients with a building chemistry that's safe and dependable. Working together, we will help you meet your goals as they pertain to material health. TaskWorx® products are Cradle to Cradle Certified® Bronze and assessed for impacts on human health and the environment. This product can be recycled. When it's time to replace, we can collect through our re-[TURN] scheme in EMEA.

Material Health & Environmental Certifications

Certifications below apply exclusively to the carpet tile rug itself and not the LokWorx Tabs adhesive

Cradle to Cradle Certified®	<b>Bronze Level (Version 3.1)</b>
Environmental Product Declaration (EPD)	<b>3rd Party Certified in Accordance with ISO14044, ISO14025 &amp; EN15804</b>
Environmental Guarantee*	<b>Take Back Policy Offered For All Taskworx Products</b>
ISO 9001	<b>Certified</b>
Country of Origin**	<b>United Kingdom</b>
BREEAM Contribution Credit	<b>Certificate of Approval Schools/Offices/Health/Industrial Shed Retail</b>

WELL V2 Contribution Credit

X08 Hazardous Material Reduction Part 1: Limit Hazardous Materials Optimization	<b>C2C Bronze Level (Version 3.1)</b>
X10 Volatile Compound Reduction Part 1 (A): Manage Volatile Organic Compounds (VOCs) Optimization	<b>C2C Bronze Level (Version 3.1)</b>
X10 Volatile Compound Reduction Part 2: Manage Semi-Volatile Organic Compounds (SVOCs) Optimization	<b>C2C Bronze Level (Version 3.1)</b>
X11 Long Term Emissions Control Part 2: Flooring Optimization	<b>M1&gt; Emissions Class For Building Material</b>
X13 Enhanced Material Precaution Part 1: Select Optimized Materials Optimization	<b>C2C Bronze Level (Version 3.1)</b>
X14 Material Transparency Part 1: Promote Ingredient Disclosure Optimization	<b>C2C Bronze Level (Version 3.1)</b>

Leed v4 Contribution Credits

MR Credit: Building Product Disclosure and Optimization Environmental Product Declarations - Option 1: Environmental Product Declaration (EPD)	<b>3rd Party Certified in Accordance with ISO14044, ISO14025 &amp; EN15804</b>
MR Credit: Building Product Disclosure and Optimization Material Ingredients - Option 1: Material Ingredient Reporting	<b>C2C Bronze Level (Version 3.1)</b>
MR Credit: Building Product Disclosure and Optimization Material Ingredients - Option 2: Material Ingredient Optimization	<b>C2C Bronze Level (Version 3.1)</b>
EQ Credit: Low Emitting Materials Option 1: Product Category Calculations	<b>Certified</b>

Air Quality

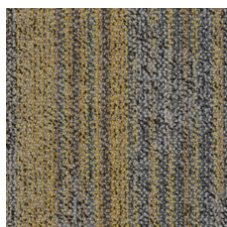
Indoor Air Comfort Gold	<b>Certified</b>
M1	<b>Certified</b>

## Memberships

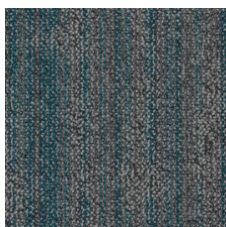
WGBC Framework  
UKGBC  
Emirates Green Building Council  
Chemsec

**WGBC Framework**  
**UKGBC**  
**Emirates Green Building Council**  
**Chemsec**

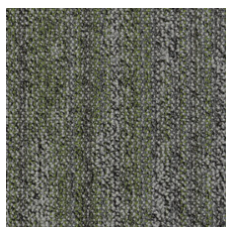
## Light Reflectance Value



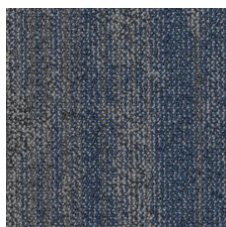
Hearten-Golden 48211  
LRV 16.2 | L\* 47.18



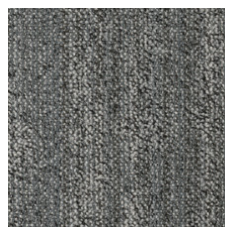
Sense-Comfort 48323  
LRV 11 | L\* 39.65



Hearten-Greener 48370  
LRV 12.4 | L\* 41.78



Sense-Serene 48486  
LRV 10.7 | L\* 39.04



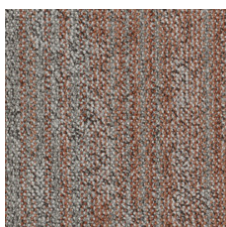
Rainstorm-Heart 48515  
LRV 13.4 | L\* 43.42



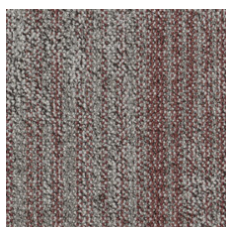
Hearten-Greige 48516  
LRV 17 | L\* 48.28



Sense-Rainstorm 48536  
LRV 13.7 | L\* 43.75



Greige-Apricot 48675  
LRV 19.8 | L\* 51.66



Greige-Rosewood 48870  
LRV 18.9 | L\* 50.56

## Additional Information

\*\*Manufactured in ISO 9001 certified facility. Meets or exceeds all local and national regulations in country of manufacture.

[Installation Guidelines](#)

[Maintenance Guidelines](#)

[15 Year Commercial Limited warranty](#)

Specifications are subject to nominal manufacturing variance. Material supply and/or manufacturing processes may necessitate changes without notice.

This product is an exclusive design and may not be duplicated in any manner. Use of this design in the creation of another product design is also strictly prohibited.

Visit [shawcontract.com/testing](http://shawcontract.com/testing) for more information.



Corporate Headquarters +1 800 257 7429 | +1 706 532 7984 | Atlanta +1 404 853 7429 | Bengaluru +91 80 6773 0202 | Beijing +86 10 6568 588 | Chicago +1 312 467 1331 | Dubai +971 4 584 6956 | Hong Kong +852 2623 0371 | London +44 207 961 4120 | Los Angeles +1 800 233 1614 | Melbourne +61 3 9939 8543 | Mexico City +55 5010 7600 | Mumbai +91 22 6284 5050 | Nantong +86 400 800 7429 | New York +1 212 953 7429 | Paris +33 (0) 1 81 22 44 39 | San Francisco +1 415 955 1920 | Shanghai +86 21 3338 4000 | Singapore +65 6733 1811 | Sydney +61 800 556 302

© 2025 Shaw Industries Group, Inc., a Berkshire Hathaway Company  
April 19, 2025

3 of 3