

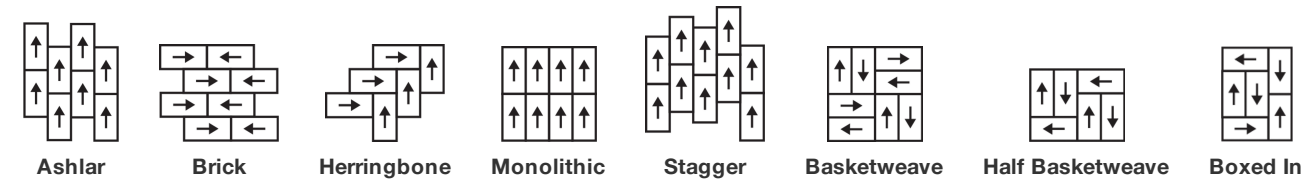
Upbeat Tile

Nom De Style	Carreaux De Tapis
Collection	New Path
Numéro De Style	5T490
Construction	Boucle De Motif à Plusieurs Niveaux
Fibre	Ecosolution Q100™ Nylon
Méthode De Teinture	Teint EN Solution
Endos Primaire	Synthétique
Endos Secondaire	Strataworx®
Traitements Protecteur	Protection Des Sols SSP® Shaw

	u.s.	metric
Dimensions Du Produit	18 in x 36 in	46 cm x 91 cm
Surface Par Carton	63 ft²	5.85 m²
Pièces Par Carton	14 pcs	
Jauge	1/12 in	47.2 per 10 cm
Compte De Mailles	8.0 per in	32.5 per 10 cm
Épaisseur Fini	0.093 in	2.36 mm
Densité	6581 oz/yd³	0.243 g/cm³
Kilotex		9.16
Poids De La Fibre Touffetée	0.220 in	5.59 mm
Poids De La Fibre Touffetée	17 oz/yd²	576.4 g/m²



Méthodes d'Installation Conseillées



Spécifications Du Rendement + Tests Et Essai

Essai Au Panneau Radiant (Astm E648)	Class I
Densité Du Fumée	Less Than 450
Statique	Less Than 3.5 kv
Label Cri Green Label Plus (Glp)	GLP2671
Inflammabilité	Pass*
Ada Conformité	≥0.6, conforme au coefficient de frottement statique pour les surfaces de passage et d'accessibilité simplifiée (ADA).***

Test Reports may be included or listed by the manufacturing/inventory style number as opposed to the noted selling style number.

Garanties

Limitée Commerciale De 15 Ans

Coordination Des Produits

Carpet Tile: **Positive Tile, Centered Tile, Calm Tile**

Attributs + Certifications

Certifications Below Apply Exclusively To The Carpet Tile Rug Itself And Not The Lokworx Tabs Adhesive

Health & Wellbeing

Material Ingredient Transparency

Cradle to Cradle Certified® | Niveau Argent (Version 3.1)
Health Product Declaration (HPD) | Divulgestion De 1 000 ppm
Living Building Challenge (LBC) | Exempt De Produits Chimiques De La
Liste Rouge
Declare | Conforme LBC
NSF 140 | or
CRI Green Label Plus (GLP) | GLP2671

Indoor Air Quality

Climate Impact

Environmental Product Declaration (EPD)

Certifié Par Une Tierce Partie Conformément Aux Normes ISO 14044,
ISO 14025 Et EN 15804
4.6 kg CO₂/m²
Low Embodied Carbon
52% (Pre-Consumer 52% | Post-Consumer 0%)
100% Recyclable

Embodied Carbon (Cradle to Gate)

Life-Cycle Carbon Emissions

Total Recycled Content

Product Packaging

Global Product Assessment

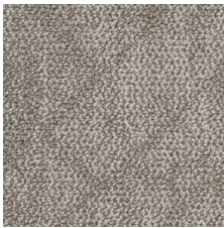
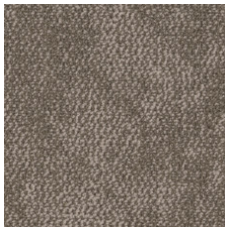
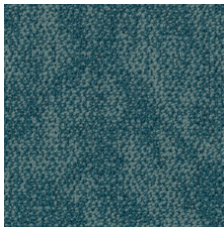
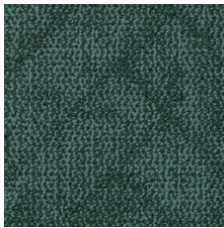
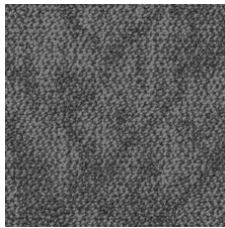
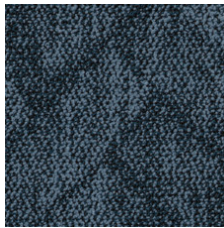
Singapore Green Label | Agréé
Environmental Guarantee* | Re[turn] Reclamation Program* | Pickup &
Delivery Available
Country of Origin** | Imported

Contribution Au Certificat Vert Leed

- « Crédit MR : Divulgestion et optimisation des produits de construction
- « Crédit MR : Divulgestion et optimisation des produits de construction
- « Crédit MR : Divulgestion et optimisation des produits de construction
- Crédit EQ : matériaux faibles émissions

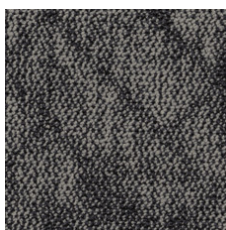
3rd Party Certified in Accordance with ISO14044, ISO14025 & EN15804
HPD (Version 2.1) or C2C Silver Level (Version 3.1)
C2C Silver Level (Version 3.1)
Green Label Plus Certification: GLP2671

Available Colorways

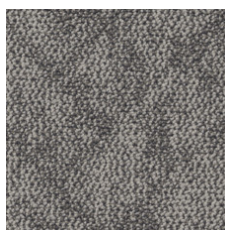
					
Bubbly 90100 LRV 27.9 L* 59.77	Satisfied 90111 LRV 18.1 L* 49.64	Refreshed 90323 LRV 12.2 L* 41.48	Optimistic 90375 LRV 8.5 L* 34.98	Strong 90481 LRV 11.6 L* 40.61	Confident 90486 LRV 7.5 L* 32.85



Mysterious 90500
LRV 5.0 | L* 26.75



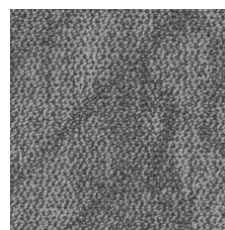
Spontaneous 90505
LRV 10.5 | L* 38.72



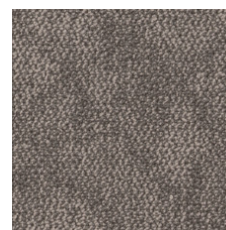
Grateful 90518
LRV 18.7 | L* 50.38



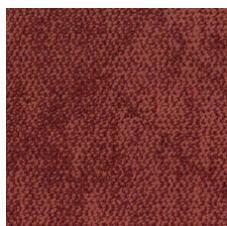
Empowered 90555
LRV 12.3 | L* 41.62



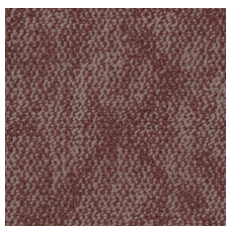
Focused 90580
LRV 18.5 | L* 50.14



Delightful 90780
LRV 16.8 | L* 47.97



Expressive 90865
LRV 7.5 | L* 32.97



Cheeky 90870
LRV 12.7 | L* 42.32

Informations Supplémentaires

* To learn more about the recyclability of our products and our Environmental Guarantee, please visit shawcontract.com/sustainability.

**Meets or exceeds all local and national regulations in country of manufacture.

***This carpet is manufactured to be ADA compliant, but to be fully ADA compliant, the end-user must ensure the carpet is adhered to the floor and installed as outlined in the ADA standards.

[Installation Guidelines](#)

[Maintenance Guidelines](#)

Specifications are subject to nominal manufacturing variance. Material supply and/or manufacturing processes may necessitate changes without notice.

This product is an exclusive design and may not be duplicated in any manner. Use of this design in the creation of another product design is also strictly prohibited.

Visit shawcontract.com/testing for more information.



PVC-Free

Corporate Headquarters +1 800 257 7429 | +1 706 532 7984 | Atlanta +1 404 853 7429 | Bengaluru +91 80 6773 0202 | Beijing +86 10 6568 588 | Chicago +1 312 467 1331 | Dubai +971 4 584 6956 | Hong Kong +852 2623 0371 | Latin America (Miami) +1 305 827 5912 | London +44 207 961 4120 | Los Angeles +1 800 233 1614 | Melbourne +61 3 9939 8543 | Mexico City +55 5010 7600 | Mumbai +91 22 6284 5050 | Nantong +86 400 800 7429 | New York +1 212 953 7429 | Paris +33 (0) 1 81 22 44 39 | San Francisco +1 415 955 1920 | Santiago +562 2431 5000 x 550 | São Paulo +55 11 3071 1702 | Shanghai +86 21 3338 4000 | Singapore +65 6733 1811 | Sydney +61 800 556 302