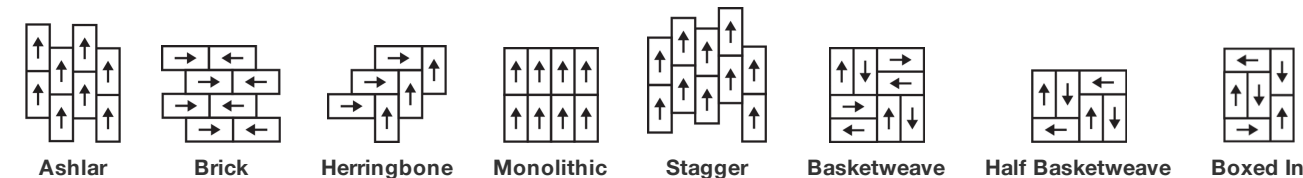


Upbeat Tile

Tipo De Produto	Carpete Em Placas	
Coleção	New Path	
Número Do Produto	5T490	
Construção	Padrão Multinível Bouclé	
Método De Tingimento	Solution Dyed	
Base Primária	Sintético	
Base Secundária	Base Strataworx®	
Tratamentos De Proteção	SSP® Shaw Proteção Anti-Manchas	
Adesivo Recomendado	LokDots, 3000 Carpet Tile 4 Gallon, 3000 Carpet Tile 1 Gallon, 4151 Multi-Use Carpet Tile 4 Gallon, 5000 Carpet Tile 1 Gallon, LokWorx Adhesive Tabs, 3800 Indoor Outdoor Carpet Tile 4 Gallon or 5000 Carpet Tile 4 Gallon	
	u.s.	metric
Tamanho Do Produto	18 in x 36 in	46 cm x 91 cm
Área Por Caixa	63 ft²	5.85 m²
Peças Por Caixa	14 pcs	
Calibre	1/12 in	47.2 per 10 cm
Pontos	8.0 per in	32.5 per 10 cm
Espessura Da Fibra Acabada	0.093 in	2.36 mm
Densidade Média	6581 oz/yd³	0.243 g/cm³
Kilotex		9.16
Espessura Total	0.220 in	5.59 mm
Peso Da Fibra	17 oz/yd²	576.4 g/m²



Método De Instalação Recomendado



Dados + Teste

Painel Radiante (Astrm E648)	Class I
Nbs Fumaça	Less Than 450
Propensão Eletrostática	Less Than 3.5 kv
Cri Green Label Plus (Bpl)	GLP2671
Teste De Ignição (Pill)	Pass*
Ada Compliance	≥0.6, Atende as recomendações do coeficiente de fricção estático para as superfícies caminháveis ADA e rotas acessíveis***

Test Reports may be included or listed by the manufacturing/inventory style number as opposed to the noted selling style number.

Garantias

15 Anos Comercial Limitada

Produtos Coordenados

Carpet Tile: **Positive Tile, Centered Tile, Calm Tile**

Atributos + Certificações

Certifications Below Apply Exclusively To The Carpet Tile Rug Itself And Not The Lokworx Tabs Adhesive

Health & Wellbeing

Material Ingredient Transparency

Cradle to Cradle Certified® | Nível Prata (Versão 3.1)
Health Product Declaration (HPD) | Divulgado 1,000 ppm
Living Building Challenge (LBC) | Livre De Químicos Do Red List
Declare | Compatível LBC
Declare | Compatível LBC
NSF 140 | Ouro
CRI Green Label Plus (GLP) | GLP2671

Indoor Air Quality

Climate Impact

Environmental Product Declaration (EPD)

Embodied Carbon (Cradle to Gate)

Life-Cycle Carbon Emissions

Total Recycled Content

Product Packaging

3rd Party Certified De Acordo Com ISO14044, ISO14025 & EN15804
3.27 kg CO₂/m²
Carbon Neutral
52% (Pre-Consumer 52% | Post-Consumer 0%)
100% Reciclável

Global Product Assessment

Singapore Green Label | Certificado
Environmental Guarantee* | Re[turn] Reclamation Program* | Pickup & Delivery Available
Country of Origin | USA & China**

Well V2 Contribution Credit

X08 Hazardous Material Reduction Part 1: Limit Hazardous Materials Optimization – 1 pt

C2C Nível Prata (Versão 3.1)

X10 Volatile Compound Reduction Part 1 (A): Manage Volatile Organic Compounds (VOCs) Optimization – 1 pt

C2C Nível Prata (Versão 3.1)

X11 Long Term Emissions Control Part 2: Flooring Optimization – 1 pt

Certificação Green Label Plus: GLP2671

X13 Enhanced Material Precaution Part 1: Select Optimized Materials Optimization – max 2 pts

C2C Nível Prata (Versão 3.1)

X14 Material Transparency Part 1: Promote Ingredient Disclosure Optimization – max 2 pts

C2C Nível Prata (Versão 3.1)

Crédito De Contribuição

MR Credit: Divulgação e otimização de produtos de construção
Declarações ambientais do produto - Opção 1: Declaração ambiental do produto (EPD)

3rd Party Certified in Accordance with ISO14044, ISO14025 & EN15804

MR Credit: Divulgação e otimização de produtos de construção
Ingredientes materiais - Opção 1: Relatório de ingredientes materiais

HPD (Version 2.1) or C2C Silver Level (Version 3.1)

MR Credit: Divulgação e otimização de produtos de construção
Ingredientes do material - Opção 2: Otimização do ingrediente do material

C2C Nível Prata (Versão 3.1)

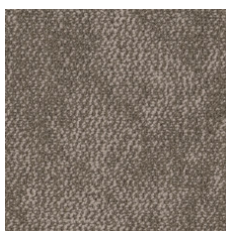
Crédito de EQ: Materiais de baixa emissão
Opção 1: cálculos de categoria de produto

Certificação Green Label Plus: GLP2671

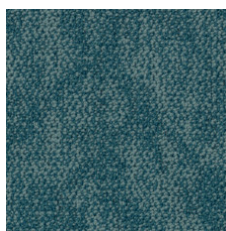
Available Colorways



Bubbly 90100
LRV 27.9 | L* 59.77



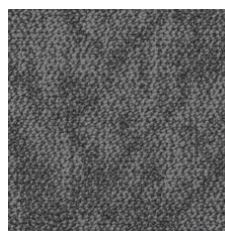
Satisfied 90111
LRV 18.1 | L* 49.64



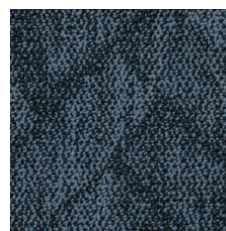
Refreshed 90323
LRV 12.2 | L* 41.48



Optimistic 90375
LRV 8.5 | L* 34.98



Strong 90481
LRV 11.6 | L* 40.61



Confident 90486
LRV 7.5 | L* 32.85



Mysterious 90500
LRV 5.0 | L* 26.75



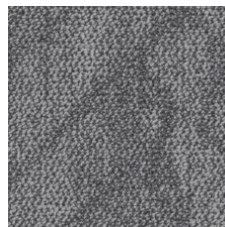
Spontaneous 90505
LRV 10.5 | L* 38.72



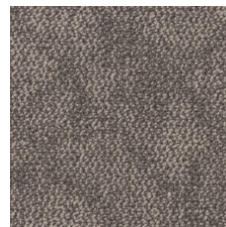
Grateful 90518
LRV 18.7 | L* 50.38



Empowered 90555
LRV 12.3 | L* 41.62



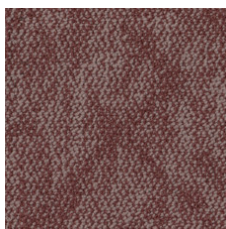
Focused 90580
LRV 18.5 | L* 50.14



Delightful 90780
LRV 16.8 | L* 47.97



Expressive 90865
LRV 7.5 | L* 32.97



Cheeky 90870
LRV 12.7 | L* 42.32

Informação Adicional

* To learn more about the recyclability of our products and our Environmental Guarantee, please visit shawcontract.com/sustainability.

**Meets or exceeds all local and national regulations in country of manufacture.

***This carpet is manufactured to be ADA compliant, but to be fully ADA compliant, the end-user must ensure the carpet is adhered to the floor and installed as outlined in the ADA standards.

[Installation Guidelines](#)

[Maintenance Guidelines](#)

Specifications are subject to nominal manufacturing variance. Material supply and/or manufacturing processes may necessitate changes without notice.

This product is an exclusive design and may not be duplicated in any manner. Use of this design in the creation of another product design is also strictly prohibited.

Visit shawcontract.com/testing for more information.



Declare.



PVC-Free

Corporate Headquarters +1 800 257 7429 | +1 706 532 7984 | Atlanta +1 404 853 7429 | Bengaluru +91 80 6773 0202 | Beijing +86 10 6568 588 | Chicago +1 312 467 1331 | Dubai +971 4 584 6956 | Hong Kong +852 2623 0371 | London +44 207 961 4120 | Los Angeles +1 800 233 1614 | Melbourne +61 3 9939 8543 | Mexico City +55 5010 7600 | Mumbai +91 22 6284 5050 | Nantong +86 400 800 7429 | New York +1 212 953 7429 | Paris +33 (0) 1 81 22 44 39 | San Francisco +1 415 955 1920 | Shanghai +86 21 3338 4000 | Singapore +65 6733 1811 | Sydney +61 800 556 302

© 2025 Shaw Industries Group, Inc., a Berkshire Hathaway Company
July 1, 2025

3 of 3