

Centered Tile

| | | |
|-------------------------|---------------------------|----------------|
| Product Type | Carpet Tile | |
| Collection | New Path | |
| Style Number | 5T492 | |
| Construction | Multi-Level Pattern Loop | |
| Fibre | Ecosolution Q100™ Nylon | |
| Dye Method | Solution Dyed | |
| Primary Backing | Polypropylene | |
| Secondary Backing | Strataworx® Tile | |
| Protective Treatments | SSP® Shaw Soil Protection | |
| | u.s. | metric |
| Product Size | 18 in x 36 in | 46 cm x 91 cm |
| Area Per Box | 63 ft² | 5.85 m² |
| Pieces Per Box | 14 pcs | |
| Gauge | 1/12 in | 47.2 per 10 cm |
| Stitches | 8.0 per in | 32.5 per 10 cm |
| Finished Pile Thickness | 0.090 in | 2.29 mm |
| Average Density | 6800 oz/yd³ | 0.252 g/cm³ |
| Kilotex | | 9.16 |
| Total Thickness | 0.215 in | 5.46 mm |
| Tufted Weight | 17 oz/yd² | 576.4 g/m² |



Recommended Installation Method



Data + Testing

| | |
|----------------------------|--|
| Radiant Panel (Astm E648) | Class I |
| Nbs Smoke | Less Than 450 |
| Electrostatic Propensity | Less Than 3.5 kv |
| Cri Green Label Plus (GLP) | GLP2671 |
| Pill Test | Pass* |
| Ada Compliance | >0.6, Meets the recommended static coefficient of friction for ADA walking surfaces and accessible routes*** |

Test Reports may be included or listed by the manufacturing/inventory style number as opposed to the noted selling style number.

Warranties

15 Year Commercial Limited

Coordinating Products

Carpet Tile: **Upbeat Tile, Positive Tile, Calm Tile**

Attributes + Certifications

Certifications Below Apply Exclusively To The Carpet Tile Rug Itself And Not The Lokworx Tabs Adhesive

Health & Wellbeing

Material Ingredient Transparency

Cradle to Cradle Certified® | Silver Level (Version 3.1)
Health Product Declaration (HPD) | 1,000 ppm Disclosure
Living Building Challenge (LBC) | Free of Red List Chemicals
Declare | LBC Compliant
NSF 140 | Gold
CRI Green Label Plus (GLP) | GLP2671

Indoor Air Quality

Climate Impact

Environmental Product Declaration (EPD)

3rd Party Certified in Accordance with ISO14044, ISO14025 & EN15804
4.6 kg CO₂/m²
Carbon Neutral
52% (Pre-Consumer 52% | Post-Consumer 0%)
100% Recyclable

Embodied Carbon (Cradle to Gate)

Life-Cycle Carbon Emissions

Total Recycled Content

Product Packaging

Global Product Assessment

Singapore Green Label | Certified
Environmental Guarantee* | Re[turn] Reclamation Program* | Pickup & Delivery Available
Country of Origin** | USA

Green Leed Contribution Credit

MR Credit: Building Product Disclosure and Optimization
Environmental Product Declarations - Option 1: Environmental Product Declaration (EPD)

3rd Party Certified in Accordance with ISO14044, ISO14025 & EN15804

MR Credit: Building Product Disclosure and Optimization
Material Ingredients - Option 1: Material Ingredient Reporting

HPD (Version 2.1) or C2C Silver Level (Version 3.1)

MR Credit: Building Product Disclosure and Optimization
Material Ingredients - Option 2: Material Ingredient Optimization

C2C Silver Level (Version 3.1)

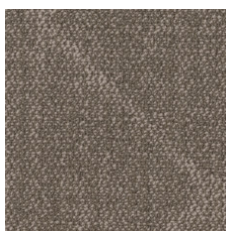
EQ Credit: Low Emitting Materials
Option 1: Product Category Calculations

Green Label Plus Certification: GLP2671

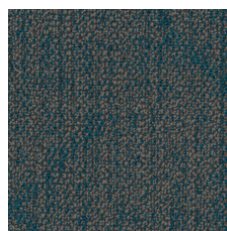
Available Colorways



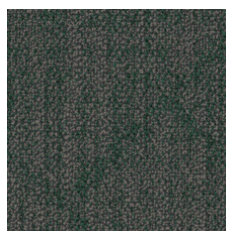
Bubbly 90100
LRV 28.0 | L* 59.91



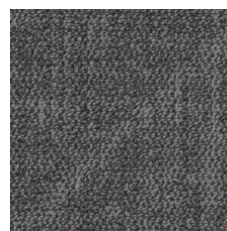
Satisfied 90111
LRV 18.8 | L* 50.41



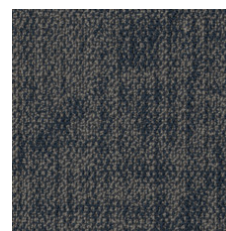
Refreshed 90323
LRV 8.1 | L* 34.27



Optimistic 90375
LRV 8.5 | L* 34.96



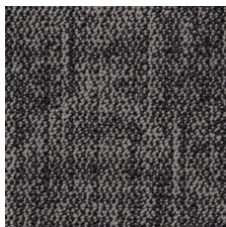
Strong 90481
LRV 11.7 | L* 40.73



Confident 90486
LRV 7.6 | L* 33.09



Mysterious 90500
LRV 4.8 | L* 26.10



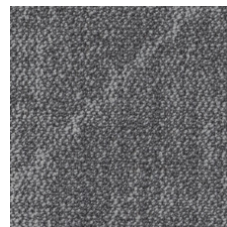
Spontaneous 90505
LRV 10.6 | L* 38.95



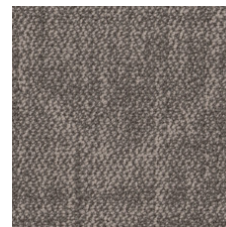
Grateful 90518
LRV 17.6 | L* 48.97



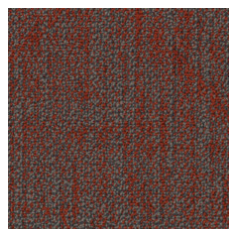
Empowered 90555
LRV 11.2 | L* 39.94



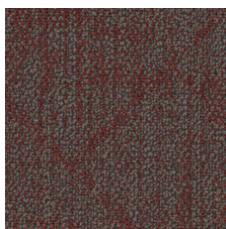
Focused 90580
LRV 17.2 | L* 48.53



Delightful 90780
LRV 15.6 | L* 46.39



Expressive 90865
LRV 8.8 | L* 35.51



Cheeky 90870
LRV 8.0 | L* 33.98

Additional Information

* To learn more about the recyclability of our products and our Environmental Guarantee, please visit shawcontract.com/sustainability.

**Meets or exceeds all local and national regulations in country of manufacture.

***This carpet is manufactured to be ADA compliant, but to be fully ADA compliant, the end-user must ensure the carpet is adhered to the floor and installed as outlined in the ADA standards.

[Installation Guidelines](#)

[Maintenance Guidelines](#)

Specifications are subject to nominal manufacturing variance. Material supply and/or manufacturing processes may necessitate changes without notice.

This product is an exclusive design and may not be duplicated in any manner. Use of this design in the creation of another product design is also strictly prohibited.

Visit shawcontract.com/testing for more information.



PVC-Free

Corporate Headquarters +1 800 257 7429 | +1 706 532 7984 | Atlanta +1 404 853 7429 | Bengaluru +91 80 6773 0202 | Beijing +86 10 6568 588 | Chicago +1 312 467 1331 | Dubai +971 4 584 6956 | Hong Kong +852 2623 0371 | Latin America (Miami) +1 305 827 5912 | London +44 207 961 4120 | Los Angeles +1 800 233 1614 | Melbourne +61 3 9939 8543 | Mexico City +55 5010 7600 | Mumbai +91 22 6284 5050 | Nantong +86 400 800 7429 | New York +1 212 953 7429 | Paris +33 (0) 1 81 22 44 39 | San Francisco +1 415 955 1920 | Santiago +562 2431 5000 x 550 | São Paulo +55 11 3071 1702 | Shanghai +86 21 3338 4000 | Singapore +65 6733 1811 | Sydney +61 800 556 302