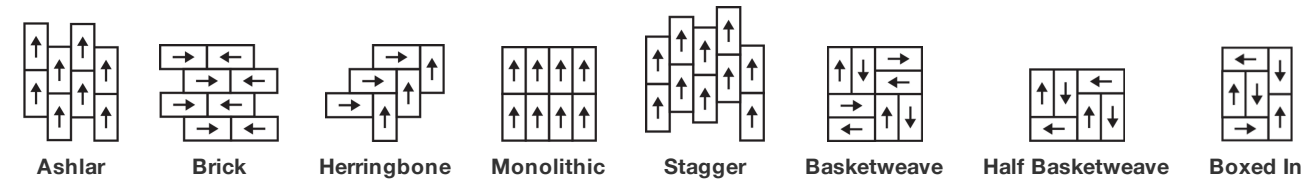


Centered Tile

|            |   |                |
|------------|---|----------------|
| 製品型        | Carpet Tile   |                |
| コレクション     | New Path  |                |
| スタイルナンバー   | 5T492   |                |
| 建設         | マルチレベル パターンループ  |                |
| 染色法        | 原液着色  |                |
| 一次バックイング   | 合成  |                |
| 二次バックイング   | Strataworx®タイル  |                |
| 保護治療       | SSP®shaw 土壌保護保証   |                |
| 推奨接着剤      | LokDots, 3000 Carpet Tile 4 Gallon, 3000 Carpet Tile 1 Gallon, 4151 Multi-Use Carpet Tile 4 Gallon, 5000 Carpet Tile 1 Gallon, LokWorx Adhesive Tabs, 3800 Indoor Outdoor Carpet Tile 4 Gallon or 5000 Carpet Tile 4 Gallon |                |
|            | u.s.  | metric         |
| 商品のサイズ     | 18 in x 36 in   | 46 cm x 91 cm  |
| ボックスあたりの面積 | 63 ft²  | 5.85 m²        |
| ボックスあたりの個数 | 14 pcs  |                |
| ゲージ        | 1/12 in   | 47.2 per 10 cm |
| ステッチ       | 8.0 per in  | 32.5 per 10 cm |
| 完成した杭の厚さ   | 0.089 in  | 2.26 mm        |
| 平均密度       | 6876 oz/yd³   | 0.254 g/cm³    |
| キロテックス     |   | 9.16           |
| 総厚         | 0.215 in  | 5.46 mm        |
| 房状の重量      | 17 oz/yd²   | 576.4 g/m²     |



推奨インストール方法



データ + テスト

|  |   |
|--|---|
| 放射パネル (astm E648)  | Class I                                   |
| Nbs煙   | Less Than 450                             |
| 静電気の傾向   | Less Than 3.5 kv                          |
| Cri Green Label Plus (glp)   | GLP2671                                   |
| 錠剤テスト  | Pass*                                     |
| Adaコンプライアンス  | >0.6、ADA 歩行面およびアクセス可能ルート用推奨静摩擦係数の基準に合致*** |
| Test Reports may be included or listed by the manufacturing/inventory style number as opposed to the noted selling style number. |   |

保証

15年の商用限定保証

コーディネート商品

Carpet Tile: **Positive Ecoworx® Tile, Calm Ecoworx® Tile, Upbeat Ecoworx® Tile, Centered Ecoworx® Tile, Upbeat Tile, Positive Tile, Calm Tile**

属性+認定

Certifications Below Apply Exclusively To The Carpet Tile Rug Itself And Not The Lokworx Tabs Adhesive

Health & Wellbeing

Material Ingredient Transparency

**Cradle to Cradle Certified® | シルバーレベル (バージョン 3.1)**  
**Health Product Declaration (HPD) | 1,000 ppm 開示**  
**Living Building Challenge (LBC) | レッドリスト記載化学物質無配合**  
**Declare | LBC 準拠**  
**Declare | LBC 準拠**  
**NSF 140 | ゴールド**  
**CRI Green Label Plus (GLP) | GLP2671**

Indoor Air Quality

Climate Impact

Environmental Product Declaration (EPD)

Embodied Carbon (Cradle to Gate)

Life-Cycle Carbon Emissions

Total Recycled Content

Product Packaging

**ISO 14044、ISO 14025 および EN15804 に基づく 第三者認証取得**  
**3.27 kg CO<sub>2</sub>/m<sup>2</sup>**  
**Carbon Neutral**  
**52% (Pre-Consumer 52% | Post-Consumer 0%)**  
**100% リサイクル可能**

Global Product Assessment

**Singapore Green Label | 認証取得**  
**Environmental Guarantee\* | Re[turn] Reclamation Program\* | Pickup & Delivery Available**  
**Country of Origin\*\* | USA & China**

Well V2 Contribution Credit

X08 Hazardous Material Reduction Part 1: Limit Hazardous Materials Optimization – 1 pt

「C2C」シルバーレベル (バージョン3.1)

X10 Volatile Compound Reduction Part 1 (A): Manage Volatile Organic Compounds (VOCs) Optimization – 1 pt

「C2C」シルバーレベル (バージョン3.1)

X11 Long Term Emissions Control Part 2: Flooring Optimization – 1 pt

**Green Label Plus Certification: GLP2671**

X13 Enhanced Material Precaution Part 1: Select Optimized Materials Optimization – max 2 pts

「C2C」シルバーレベル (バージョン3.1)

X14 Material Transparency Part 1: Promote Ingredient Disclosure Optimization – max 2 pts

「C2C」シルバーレベル (バージョン3.1)

グリーンリード貢献クレジット

MRクレジット：製品の開示と最適化の構築  
環境製品宣言-オプション1：環境製品宣言 (EPD)

**3rd Party Certified in Accordance with ISO14044, ISO14025 & EN15804**

MRクレジット：製品の開示と最適化の構築  
材料成分-オプション1：材料成分レポート

**HPD (Version 2.1) or C2C Silver Level (Version 3.1)**

MRクレジット：製品の開示と最適化の構築  
材料成分-オプション2：材料成分の最適化

「C2C」シルバーレベル (バージョン3.1)

EQクレジット：低排出材料  
オプション1：製品カテゴリの計算

**Green Label Plus Certification: GLP2671**

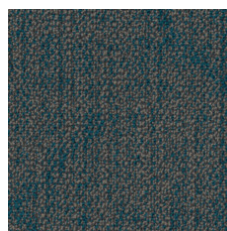
### Available Colorways



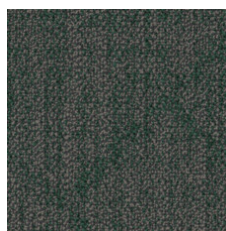
Bubbly 90100  
LRV 28.0 | L\* 59.91



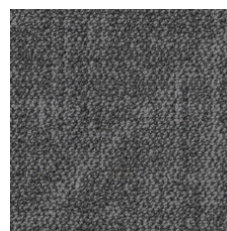
Satisfied 90111  
LRV 18.8 | L\* 50.41



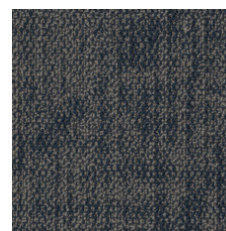
Refreshed 90323  
LRV 8.1 | L\* 34.27



Optimistic 90375  
LRV 8.5 | L\* 34.96



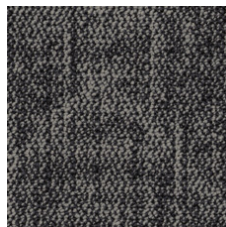
Strong 90481  
LRV 11.7 | L\* 40.73



Confident 90486  
LRV 7.6 | L\* 33.09



Mysterious 90500  
LRV 4.8 | L\* 26.10



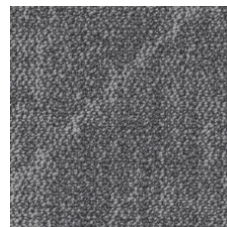
Spontaneous 90505  
LRV 10.6 | L\* 38.95



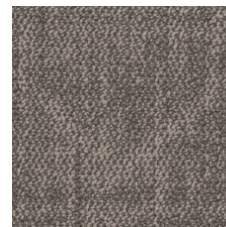
Grateful 90518  
LRV 17.6 | L\* 48.97



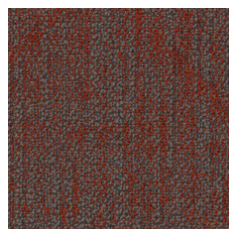
Empowered 90555  
LRV 11.2 | L\* 39.94



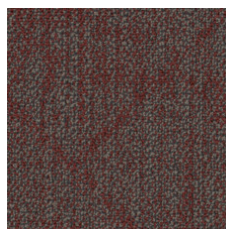
Focused 90580  
LRV 17.2 | L\* 48.53



Delightful 90780  
LRV 15.6 | L\* 46.39



Expressive 90865  
LRV 8.8 | L\* 35.51



Cheeky 90870  
LRV 8.0 | L\* 33.98

### 追加情報

\* To learn more about the recyclability of our products and our Environmental Guarantee, please visit [shawcontract.com/sustainability](https://shawcontract.com/sustainability).

\*\*Meets or exceeds all local and national regulations in country of manufacture.

\*\*\*This carpet is manufactured to be ADA compliant, but to be fully ADA compliant, the end-user must ensure the carpet is adhered to the floor and installed as outlined in the ADA standards.

[Installation Guidelines](#)

[Maintenance Guidelines](#)

Specifications are subject to nominal manufacturing variance. Material supply and/or manufacturing processes may necessitate changes without notice.

This product is an exclusive design and may not be duplicated in any manner. Use of this design in the creation of another product design is also strictly prohibited.

Visit [shawcontract.com/testing](https://shawcontract.com/testing) for more information.



**PVC-Free**

Corporate Headquarters +1 800 257 7429 | +1 706 532 7984 | Atlanta +1 404 853 7429 | Bengaluru +91 80 6773 0202 | Beijing +86 10 6568 588 | Chicago +1 312 467 1331 | Dubai +971 4 584 6956 | Hong Kong +852 2623 0371 | London +44 207 961 4120 | Los Angeles +1 800 233 1614 | Melbourne +61 3 9939 8543 | Mexico City +55 5010 7600 | Mumbai +91 22 6284 5050 | Nantong +86 400 800 7429 | New York +1 212 953 7429 | Paris +33 (0) 1 81 22 44 39 | San Francisco +1 415 955 1920 | Shanghai +86 21 3338 4000 | Singapore +65 6733 1811 | Sydney +61 800 556 302

© 2025 Shaw Industries Group, Inc., a Berkshire Hathaway Company  
July 21, 2025

3 of 3