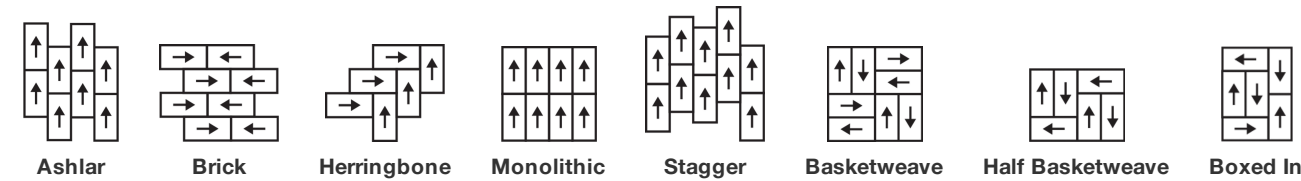


Centered Tile

产品类别	Carpet Tile	
系列	New Path	
款型编号	5T492	
结构	高低圈绒	
染色方式	原液染色	
第一层底背	合成的	
第二层底背	Strataworx®块毯	
防护处理	SSP®萧氏污渍防护成分	
胶粘剂建议	LokDots, 3000 Carpet Tile 4 Gallon, 3000 Carpet Tile 1 Gallon, 4151 Multi-Use Carpet Tile 4 Gallon, 5000 Carpet Tile 1 Gallon, LokWorx Adhesive Tabs, 3800 Indoor Outdoor Carpet Tile 4 Gallon or 5000 Carpet Tile 4 Gallon	
产品尺寸	U.S.	metric
	18 in x 36 in	46 cm x 91 cm
每箱面积	63 ft²	5.85 m²
每盒件数	14 pcs	
隔距	1/12 in	47.2 per 10 cm
针数	8.0 per in	32.5 per 10 cm
成品簇绒厚度	0.089 in	2.26 mm
平均密度	6876 oz/yd³	0.254 g/cm³
千特		9.16
总厚度	0.215 in	5.46 mm
簇绒重量	17 oz/yd²	576.4 g/m²



铺装建议



数据 + 测试

辐射板 (astm E648)	Class I
Nbs烟雾	Less Than 450
静电倾向	Less Than 3.5 kv
Cri绿色标签 (glp)	GLP2671
药物测试	Pass*
Ada标准	≥0.5, 符合ADA建议的地面和走廊静摩擦系数***

Test Reports may be included or listed by the manufacturing/inventory style number as opposed to the noted selling style number.

质保

15年商用有限质保

搭配产品

Carpet Tile: **Positive Ecoworx® Tile, Calm Ecoworx® Tile, Upbeat Ecoworx® Tile, Centered Ecoworx® Tile, Upbeat Tile, Positive Tile, Calm Tile**

属性+认证

Certifications Below Apply Exclusively To The Carpet Tile Rug Itself And Not The Lokworx Tabs Adhesive

Health & Wellbeing

Material Ingredient Transparency

Cradle to Cradle Certified® | 银级 (3.1版)  
Health Product Declaration (HPD) | 1,000 ppm披露  
Living Building Challenge (LBC) | 不含红榜化学限制品  
Declare | 符合LBC标准  
Declare | 符合LBC标准  
NSF 140 | 金  
CRI Green Label Plus (GLP) | GLP2671

Indoor Air Quality

Climate Impact

Environmental Product Declaration (EPD)

Embodied Carbon (Cradle to Gate)

Life-Cycle Carbon Emissions

Total Recycled Content

Product Packaging

通过ISO 14044、ISO 14025和EN15804等第三方认证  
3.27 kg CO<sub>2</sub>/m<sup>2</sup>  
Carbon Neutral  
52% (Pre-Consumer 52% | Post-Consumer 0%)  
100% 可回收

Global Product Assessment

Singapore Green Label | 认证  
Environmental Guarantee\* | Re[turn] Reclamation Program\* | Pickup & Delivery Available  
Country of Origin\*\* | USA & China

Well V2 Contribution Credit

X08 Hazardous Material Reduction Part 1: Limit Hazardous Materials Optimization – 1 pt

“摇篮到摇篮”银级 (3.1版)

X10 Volatile Compound Reduction Part 1 (A): Manage Volatile Organic Compounds (VOCs) Optimization – 1 pt

“摇篮到摇篮”银级 (3.1版)

X11 Long Term Emissions Control Part 2: Flooring Optimization – 1 pt

绿色标签+认证：GLP2671

X13 Enhanced Material Precaution Part 1: Select Optimized Materials Optimization – max 2 pts

“摇篮到摇篮”银级 (3.1版)

X14 Material Transparency Part 1: Promote Ingredient Disclosure Optimization – max 2 pts

“摇篮到摇篮”银级 (3.1版)

绿色leed贡献信用

MR Credit：建立产品披露和优化  
环境产品声明-选项1：环境产品声明 (EPD)

3rd Party Certified in Accordance with ISO14044, ISO14025 & EN15804

MR Credit：建立产品披露与优化  
材料成分-选项1：材料成分报告

HPD (Version 2.1) or C2C Silver Level (Version 3.1)

MR Credit：建立产品披露与优化  
材料成分-选项2：材料成分优化

“摇篮到摇篮”银级 (3.1版)

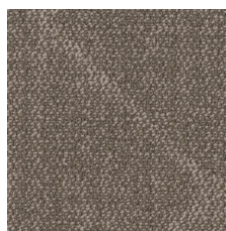
EQ信用：低排放材料  
选项1：产品类别计算

绿色标签+认证：GLP2671

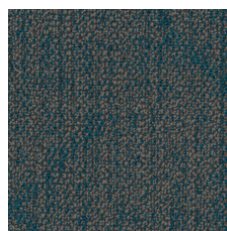
### Available Colorways



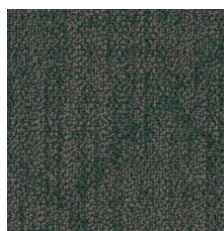
Bubbly 90100  
LRV 28.0 | L\* 59.91



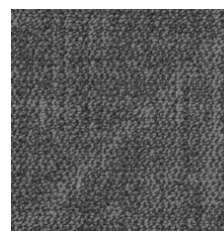
Satisfied 90111  
LRV 18.8 | L\* 50.41



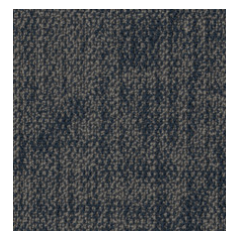
Refreshed 90323  
LRV 8.1 | L\* 34.27



Optimistic 90375  
LRV 8.5 | L\* 34.96



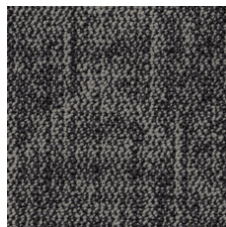
Strong 90481  
LRV 11.7 | L\* 40.73



Confident 90486  
LRV 7.6 | L\* 33.09



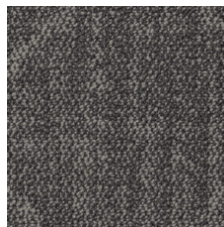
Mysterious 90500  
LRV 4.8 | L\* 26.10



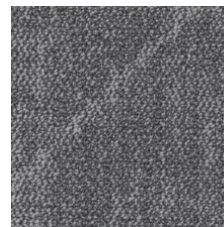
Spontaneous 90505  
LRV 10.6 | L\* 38.95



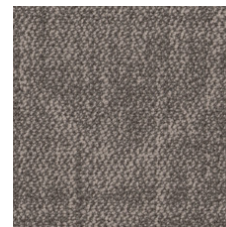
Grateful 90518  
LRV 17.6 | L\* 48.97



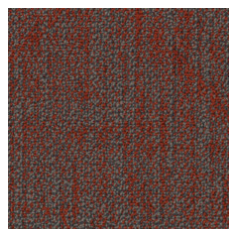
Empowered 90555  
LRV 11.2 | L\* 39.94



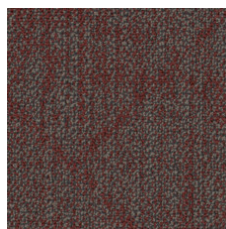
Focused 90580  
LRV 17.2 | L\* 48.53



Delightful 90780  
LRV 15.6 | L\* 46.39



Expressive 90865  
LRV 8.8 | L\* 35.51



Cheeky 90870  
LRV 8.0 | L\* 33.98

### 附加信息

\* To learn more about the recyclability of our products and our Environmental Guarantee, please visit [shawcontract.com/sustainability](https://shawcontract.com/sustainability).

\*\*Meets or exceeds all local and national regulations in country of manufacture.

\*\*\*This carpet is manufactured to be ADA compliant, but to be fully ADA compliant, the end-user must ensure the carpet is adhered to the floor and installed as outlined in the ADA standards.

[Installation Guidelines](#)

[Maintenance Guidelines](#)

Specifications are subject to nominal manufacturing variance. Material supply and/or manufacturing processes may necessitate changes without notice.

This product is an exclusive design and may not be duplicated in any manner. Use of this design in the creation of another product design is also strictly prohibited.

Visit [shawcontract.com/testing](https://shawcontract.com/testing) for more information.



**PVC-Free**

Corporate Headquarters +1 800 257 7429 | +1 706 532 7984 | Atlanta +1 404 853 7429 | Bengaluru +91 80 6773 0202 | Beijing +86 10 6568 588 | Chicago +1 312 467 1331 | Dubai +971 4 584 6956 | Hong Kong +852 2623 0371 | London +44 207 961 4120 | Los Angeles +1 800 233 1614 | Melbourne +61 3 9939 8543 | Mexico City +55 5010 7600 | Mumbai +91 22 6284 5050 | Nantong +86 400 800 7429 | New York +1 212 953 7429 | Paris +33 (0) 1 81 22 44 39 | San Francisco +1 415 955 1920 | Shanghai +86 21 3338 4000 | Singapore +65 6733 1811 | Sydney +61 800 556 302

© 2025 Shaw Industries Group, Inc., a Berkshire Hathaway Company  
July 3, 2025

3 of 3