

Alongside Tile

製品型	Carpet Tile	
コレクション	Collective	
スタイルナンバー	5T495	
建設	マルチレベル パターンループ	
染色法	100% 原液着色	
一次バックイング	合成	
二次バックイング	Ecworx®タイル	
保護治療	SSP®shaw 土壌保護保証	
	u.s.	metric
商品のサイズ	9 in x 36 in	23 cm x 91 cm
ボックスあたりの面積	45 ft²	4.18 m²
ボックスあたりの個数	20 pcs	
ゲージ	1/12 in	47.2 per 10 cm
ステッチ	8.5 per in	34.5 per 10 cm
完成した杭の厚さ	0.104 in	2.64 mm
平均密度	5885 oz/yd³	0.218 g/cm³
キロテックス		9.7
総厚	0.253 in	6.43 mm
房状の重量	17 oz/yd²	576.4 g/m²



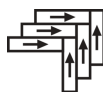
推奨インストール方法



Ashlar



Brick



Herringbone



Monolithic



Stagger

データ + テスト

放射パネル (astm E648)

Nbs煙

静電気の傾向

Cri Green Label Plus (glp)

錠剤テスト

Adaコンプライアンス

Class I

Less Than 450

Less Than 3.5 kv

USA GLP9968 | China GLP1263

Pass*

>0.6、ADA 歩行面およびアクセス可能ルート用推奨静摩擦係数の基準に合致***

Test Reports may be included or listed by the manufacturing/inventory style number as opposed to the noted selling style number.

保証

生涯商用限定保証

コーディネート商品

Carpet Tile: **Collective I Tile, Collective II Tile, Collective III Tile, Hand In Hand Tile, In Common Tile, Side By Side Tile, All Together Tile, In Tune Tile**

属性+認定

Certifications Below Apply Exclusively To The Carpet Tile Rug Itself And Not The Lokworx Tabs Adhesive

Health & Wellbeing

Material Ingredient Transparency

Cradle to Cradle Certified® | Silver Level (Version 4.0)
Health Product Declaration (HPD) | 1,000 ppm 開示
Living Building Challenge (LBC) | レッドリスト記載化学物質無配合
Declare | LBC 準拠
Declare | LBC 準拠
NSF 140 | ゴールド
CRI Green Label Plus (GLP) | GLP9968

Indoor Air Quality

Climate Impact

Environmental Product Declaration (EPD)
Embodied Carbon (Cradle to Gate)
Life-Cycle Carbon Emissions
Total Recycled Content
Product Packaging

ISO 14044、ISO 14025 および EN15804 に基づく 第三者認証取得
3.69 kg CO₂/m²
Carbon Neutral
56% (Pre-Consumer 56% | Post-Consumer 0%)
100% リサイクル可能

Global Product Assessment

Singapore Green Label | 認証取得
CE Marking (EN 14041) | 第三者認証取得
Environmental Guarantee* | Re[turn] Reclamation Program* | Through Our Environmental Guarantee, Shaw Pledges to Transport And Recycle Any Ecoworx Carpet.
Country of Origin | USA & China**

Well V2 Contribution Credit

X08 Hazardous Material Reduction Part 1: Limit Hazardous Materials Optimization – 1 pt
X10 Volatile Compound Reduction Part 1 (A): Manage Volatile Organic Compounds (VOCs) Optimization – 1 pt
X11 Long Term Emissions Control Part 2: Flooring Optimization – 1 pt
X13 Enhanced Material Precaution Part 1: Select Optimized Materials Optimization – max 2 pts
X14 Material Transparency Part 1: Promote Ingredient Disclosure Optimization – max 2 pts

C2C Silver Level (Version 4.0)
C2C Silver Level (Version 4.0)
Green Label Plus Certification: GLP9968
C2C Silver Level (Version 4.0)
C2C Silver Level (Version 4.0)

グリーンリード貢献クレジット

MRクレジット：製品の開示と最適化の構築
環境製品宣言-オプション1：環境製品宣言 (EPD)

MRクレジット：製品の開示と最適化の構築
材料成分-オプション1：材料成分レポート

MRクレジット：製品の開示と最適化の構築
材料成分-オプション2：材料成分の最適化

MRクレジット：製品の開示と最適化の構築
原材料の調達-オプション2：リーダーシップの抽出実践

EQクレジット：低排出材料
オプション1：製品カテゴリの計算

MR Credit: Interiors Life-Cycle Impact Reduction
Option 3: Design for Flexibility

Available Colorways



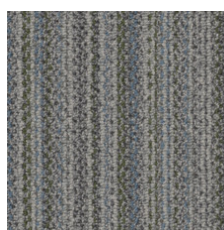
Include 50100
LRV 32.6 | L* 63.87



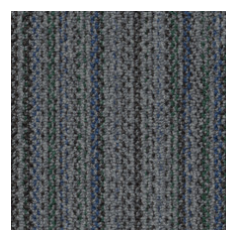
Together 50105
LRV 33.9 | L* 64.84



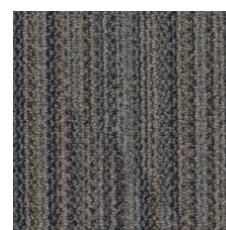
Together Color 50210
LRV 37.1 | L* 67.35



Link Color 50375
LRV 19.1 | L* 50.79



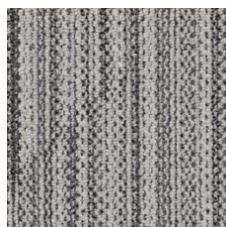
Unify Color 50485
LRV 10.9 | L* 39.42



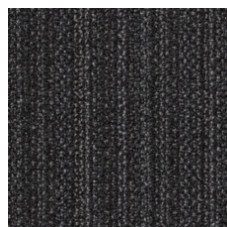
Combine 50486
LRV 13.5 | L* 43.44



Unify 50500
LRV 11.2 | L* 39.97



Connect 50505
LRV 31.5 | L* 62.93



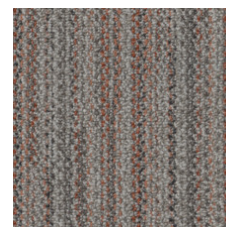
Embrace 50506
LRV 4.9 | L* 26.56



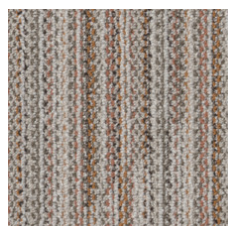
Merge 50518
LRV 21.8 | L* 53.81



Link 50580
LRV 19.4 | L* 51.11



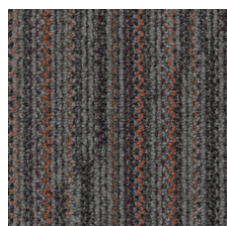
Merge Color 50675
LRV 19.7 | L* 51.49



Include Color 50678
LRV 29.8 | L* 61.44



Join 50761
LRV 9.1 | L* 36.25



Join Color 50865
LRV 9.5 | L* 36.99

3rd Party Certified in Accordance with ISO14044, ISO14025 & EN15804

C2C Silver Level (Version 4.0) or HPD (Version 2.1)

C2C Silver Level (Version 4.0)

Environmental Guarantee: Re[turn] Reclamation Program* | Through Our Environmental Guarantee, Shaw Pledges to Transport And Recycle Any Ecoworx® Carpet.

Green Label Plus Certification: GLP9968

Ecoworx® Tile with Lokdots Installation System

追加情報

* To learn more about the recyclability of our products and our re[TURN], please visit shawcontract.com/sustainability.

**Meets or exceeds all local and national regulations in country of manufacture.

***This carpet is manufactured to be ADA compliant, but to be fully ADA compliant, the end-user must ensure the carpet is adhered to the floor and installed as outlined in the ADA standards.

[Installation Guidelines](#)

[Maintenance Guidelines](#)

Specifications are subject to nominal manufacturing variance. Material supply and/or manufacturing processes may necessitate changes without notice.

This product is an exclusive design and may not be duplicated in any manner. Use of this design in the creation of another product design is also strictly prohibited.

Visit shawcontract.com/testing for more information.



Declare.



PVC-Free

Corporate Headquarters +1 800 257 7429 | +1 706 532 7984 | Atlanta +1 404 853 7429 | Bengaluru +91 80 6773 0202 | Beijing +86 10 6568 588 | Chicago +1 312 467 1331 | Dubai +971 4 584 6956 | Hong Kong +852 2623 0371 | London +44 207 961 4120 | Los Angeles +1 800 233 1614 | Melbourne +61 3 9939 8543 | Mexico City +55 5010 7600 | Mumbai +91 22 6284 5050 | Nantong +86 400 800 7429 | New York +1 212 953 7429 | Paris +33 (0) 1 81 22 44 39 | San Francisco +1 415 955 1920 | Shanghai +86 21 3338 4000 | Singapore +65 6733 1811 | Sydney +61 800 556 302