

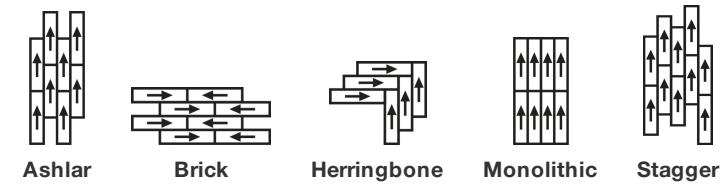
Collaboration Tile

Tipo De Producto	Alfombra Modular
Colección	Teamwork
Número De Estilo	5T497
Construcción	Patrón Con Bucle Multinivel
Método De Teñido	100% Solution Dyed
Base Primaria	Sintético
Base Secundaria	Base Ecoworx®
Tratamientos	SSP® Shaw Protección Para El Piso
Protectores	

	u.s.	metric
Tamaño Del Producto	9 in x 36 in	23 cm x 91 cm
Área Por Caja	45 ft²	4.18 m²
Piezas Por Caja	20 pcs	
Gauge	1/12 in	47.2 per 10 cm
Puntadas	9.5 per in	37.0 per 10 cm
Espesor De La Fibra Terminada	0.113 in	2.87 mm
Densidad Media	5735 oz/yd³	0.212 g/cm³
Kilotex		10.6
Espesor Total	0.247 in	6.27 mm
Peso De La Fibra	18 oz/yd²	610.3 g/m²



Método De Instalación Recomendado



Datos + Pruebas

Panel Radiante (Astm E648)	Class I
Nbs Humo	Less Than 450
Propensión Electrostática	Less Than 3.5 kv
Cri Green Label Plus (Glp)	USA GLP9968   China GLP1263
Prueba De Pastillas (Pill)	Pass*
Ada Compliance	≥0.6, Cumple con las recomendaciones para el coeficiente de fricción estática para superficies transitables ADA y rutas accesibles***

Test Reports may be included or listed by the manufacturing/inventory style number as opposed to the noted selling style number.

Garantías

Vitalicio Limitado A USo Comercial

Productos Que Combinan

Carpet Tile: **Huddle Tile, Kickoff Tile, Follow-Up Tile**

Atributos + Certificaciones

Certifications Below Apply Exclusively To The Carpet Tile Rug Itself And Not The Lokworx Tabs Adhesive

Health & Wellbeing

Material Ingredient Transparency

**Cradle to Cradle Certified® | Silver Level (Version 4.0)**  
**Health Product Declaration (HPD) | Divulgado 1,000 ppm**  
**Living Building Challenge (LBC) | Libre De Químicos Red List**  
**Declare | Compatible LBC**  
**Declare | Compatible LBC**  
**NSF 140 | Oro**  
**CRI Green Label Plus (GLP) | GLP9968**

Indoor Air Quality

Climate Impact

Environmental Product Declaration (EPD)

**Certificado Tercerizado De Acuerdo Con La Norma ISO14044, ISO14025 & EN15804**  
**3.71 kg CO<sub>2</sub>/m<sup>2</sup>**  
**Carbon Neutral**  
**57% (Pre-Consumer 57% | Post-Consumer 0%)**  
**100% Reciclable**

Embodied Carbon (Cradle to Gate)

Life-Cycle Carbon Emissions

Total Recycled Content

Product Packaging

Global Product Assessment

**Singapore Green Label | Certificado**  
**CE Marking (EN 14041) | Certificado Tercerizado**  
**Environmental Guarantee\* | Re[turn] Reclamation Program\* | Through Our Environmental Guarantee, Shaw Pledges to Transport And Recycle Any Ecoworx Carpet.**  
**Country of Origin\*\* | USA & China**

Well V2 Contribution Credit

X08 Hazardous Material Reduction Part 1: Limit Hazardous Materials Optimization – 1 pt

**C2C Silver Level (Version 4.0)**

X10 Volatile Compound Reduction Part 1 (A): Manage Volatile Organic Compounds (VOCs) Optimization – 1 pt

**C2C Silver Level (Version 4.0)**

X11 Long Term Emissions Control Part 2: Flooring Optimization – 1 pt

**Green Label Plus Certification: GLP9968**

X13 Enhanced Material Precaution Part 1: Select Optimized Materials Optimization – max 2 pts

**C2C Silver Level (Version 4.0)**

X14 Material Transparency Part 1: Promote Ingredient Disclosure Optimization – max 2 pts

**C2C Silver Level (Version 4.0)**

## Contribución Para Créditos Leed

Crédito MR: Divulgación y optimización de productos de construcción  
Declaraciones ambientales de productos - Opción 1: Declaración ambiental de productos (EPD)

Crédito MR: Divulgación y optimización de productos de construcción  
Ingredientes de materiales - Opción 1: Informe de ingredientes de los materiales

Crédito MR: Divulgación y optimización de productos de construcción  
Ingredientes de materiales - Opción 2: Optimización de ingredientes de los materiales

Crédito MR: Divulgación y optimización de productos de construcción  
Abastecimiento de materias primas - Opción 2: Prácticas en liderazgo de extracción

Crédito EQ: Materiales de baja emisión  
Opción 1: Cálculos de categoría de producto

MR Credit: Interiors Life-Cycle Impact Reduction  
Option 3: Design for Flexibility

**3rd Party Certified in Accordance with ISO 14044, ISO 14025 & EN15804**

**C2C Silver Level (Version 4.0) or HPD (Version 2.1)**

**C2C Silver Level (Version 4.0)**

**Environmental Guarantee: Re[turn] Reclamation Program\* | Through Our Environmental Guarantee, Shaw Pledges to Transport And Recycle Any Ecoworx® Carpet.**

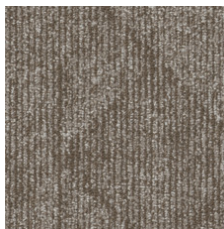
**Green Label Plus Certification: GLP9968**

**Ecoworx® Tile with Lokdots Installation System**

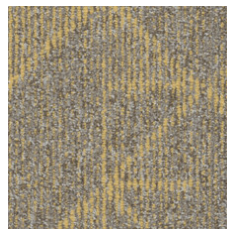
## Available Colorways



Impact 97100  
LRV 26.6 | L\* 58.63



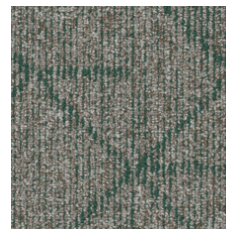
High Impact 97111  
LRV 19.2 | L\* 50.92



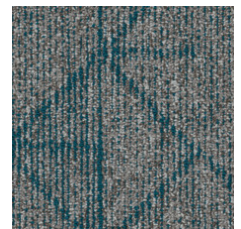
Purposeful Impact 97211  
LRV 28.5 | L\* 60.36



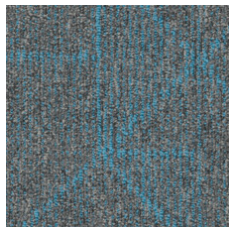
Efficient Progress 97375  
LRV 17.4 | L\* 48.74



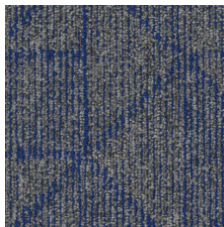
Strategic Impact 97396  
LRV 18.6 | L\* 50.2



Rapid Progress 97405  
LRV 15.9 | L\* 46.88



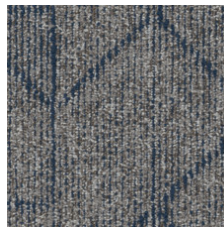
Influence Outcomes 97411  
LRV 16.2 | L\* 47.19



Influence Results 97429  
LRV 11.7 | L\* 40.73



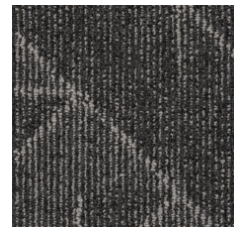
Clear Impact 97485  
LRV 19 | L\* 50.63



True Progress 97496  
LRV 16.4 | L\* 47.53



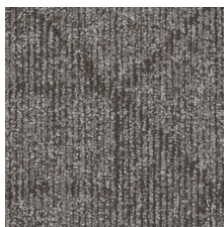
Contribute 97500  
LRV 4.5 | L\* 25.35



Innovate 97505  
LRV 8.5 | L\* 34.91



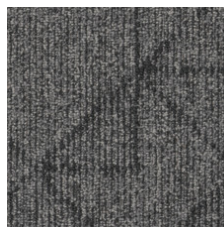
Progress 97515  
LRV 26 | L\* 58.04



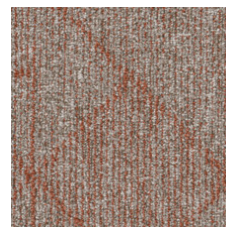
Steady Progress 97518  
LRV 17.4 | L\* 48.77



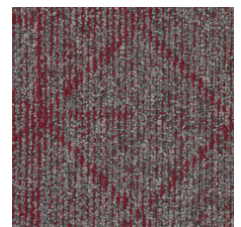
Influence 97535  
LRV 19.9 | L\* 51.68



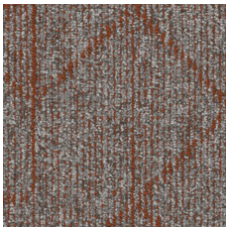
Influence Others 97555  
LRV 11.6 | L\* 40.63



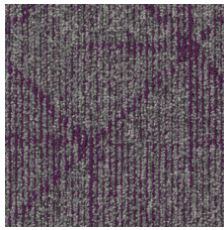
Positive Impact 97676  
LRV 19.2 | L\* 50.88



Influence Process 97855  
LRV 11.8 | L\* 40.97



Meaningful Progress 97865  
LRV 17.4 | L\* 48.71



Influence Change 97979  
LRV 10.5 | L\* 38.65

### Información Adicional

\* To learn more about the recyclability of our products and our re[TURN], please visit [shawcontract.com/sustainability](https://shawcontract.com/sustainability).

\*\*Meets or exceeds all local and national regulations in country of manufacture.

\*\*\*This carpet is manufactured to be ADA compliant, but to be fully ADA compliant, the end-user must ensure the carpet is adhered to the floor and installed as outlined in the ADA standards.

[Installation Guidelines](#)

[Maintenance Guidelines](#)

Specifications are subject to nominal manufacturing variance. Material supply and/or manufacturing processes may necessitate changes without notice.

This product is an exclusive design and may not be duplicated in any manner. Use of this design in the creation of another product design is also strictly prohibited.

Visit [shawcontract.com/testing](https://shawcontract.com/testing) for more information.



**PVC-Free**

Corporate Headquarters +1 800 257 7429 | +1 706 532 7984 | Atlanta +1 404 853 7429 | Bengaluru +91 80 6773 0202 | Beijing +86 10 6568 588 | Chicago +1 312 467 1331 | Dubai +971 4 584 6956 | Hong Kong +852 2623 0371 | London +44 207 961 4120 | Los Angeles +1 800 233 1614 | Melbourne +61 3 9939 8543 | Mexico City +55 5010 7600 | Mumbai +91 22 6284 5050 | Nantong +86 400 800 7429 | New York +1 212 953 7429 | Paris +33 (0) 1 81 22 44 39 | San Francisco +1 415 955 1920 | Shanghai +86 21 3338 4000 | Singapore +65 6733 1811 | Sydney +61 800 556 302

© 2025 Shaw Industries Group, Inc., a Berkshire Hathaway Company  
July 2, 2025

4 of 4