

In Tune Tile

Product Type	Carpet Tile	
Collection	Collective	
Style Number	5T496	
Construction	Multi-Level Pattern Loop	
Fiber	Ecosolution Q100™ Nylon	
Dye Method	100% Solution Dyed	
Primary Backing	Synthetic	
Secondary Backing	Ecoworx® Tile	
Protective Treatments	SSP® Shaw Soil Protection	
	u.s.	metric
Product Size	9 in x 36 in	23 cm x 91 cm
Area Per Carton	45 ft²	4.18 m²
Pieces Per Carton	20 pcs	
Gauge	1/12 in	47.2 per 10 cm
Stitches	8.5 per in	34.5 per 10 cm
Finished Pile Thickness	0.100 in	2.54 mm
Average Density	6120 oz/yd³	0.226 g/cm³
Kilotex		9.69
Total Thickness	0.242 in	6.15 mm
Tufted Weight	17 oz/yd²	576.4 g/m²



Recommended Installation Method



Data + Testing

Radiant Panel	Class I
Nbs Smoke	Less Than 450
Electrostatic Propensity	Less Than 3.5 kv
Cri Green Label Plus (Glp)	GLP9968
Pill Test	Pass*
Ada Compliance	>0.6, Meets the recommended static coefficient of friction for ADA walking surfaces and accessible routes***

Test Reports may be included or listed by the manufacturing/inventory style number as opposed to the noted selling style number.

Warranties

Lifetime Commercial Limited

Coordinating Products

Carpet Tile: **Collective I Tile, Collective II Tile, Collective III Tile, Collective IV Tile, Collective V Tile, Hand In Hand Tile, In Common Tile, Side By Side Tile, All Together Tile, Alongside Tile**

Material Health & Environmental Certifications

Certifications Below Apply Exclusively To The Carpet Tile Rug Itself And Not The Lokworx Tabs Adhesive

Health & Wellbeing

Material Ingredient Transparency

Cradle to Cradle Certified® | Silver Level (Version 4.0)
Health Product Declaration (HPD) | 1,000 ppm Disclosure
Living Building Challenge (LBC) | Free of Red List Chemicals Declare | LBC Compliant
NSF 140 | Gold
Greenhealth Approved | Yes
CRI Green Label Plus (GLP) | GLP9968

Indoor Air Quality

Climate Impact

Environmental Product Declaration (EPD)

3rd Party Certified in Accordance with ISO14044, ISO14025 & EN15804

Total Recycled Content

56% (Pre-Consumer 56% | Post-Consumer 0%)

Product Packaging

100% Recyclable

Global Product Assessment

Singapore Green Label | Certified
CE Marking (EN 14041) | 3rd Party Certified
Environmental Guarantee* | Re[turn] Reclamation Program* | Through Our Environmental Guarantee, Shaw Pledges to Transport And Recycle Any Ecoworx Carpet.
Country of Origin | USA**

Green Leed Contribution Credit

MR Credit: Building Product Disclosure and Optimization
Environmental Product Declarations - Option 1: Environmental Product Declaration (EPD)

3rd Party Certified in Accordance with ISO14044, ISO14025 & EN15804

MR Credit: Building Product Disclosure and Optimization
Material Ingredients - Option 1: Material Ingredient Reporting

C2C Silver Level (Version 4.0) or HPD (Version 2.1)

MR Credit: Building Product Disclosure and Optimization
Material Ingredients - Option 2: Material Ingredient Optimization

C2C Silver Level (Version 4.0)

MR Credit: Building Product Disclosure and Optimization
Sourcing of Raw Materials - Option 2: Leadership Extraction Practices

Environmental Guarantee: Re[turn] Reclamation Program* | Through Our Environmental Guarantee, Shaw Pledges to Transport And Recycle Any Ecoworx Carpet.

Green Label Plus Certification: GLP9968

EQ Credit: Low Emitting Materials
Option 1: Product Category Calculations

MR Credit: Interiors Life-Cycle Impact Reduction
Option 3: Design for Flexibility

Ecoworx Tile with Lokdots Installation System

Available Colorways



Include 50100



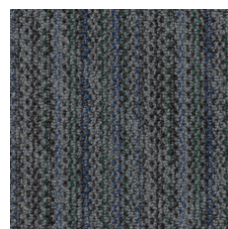
Together 50105



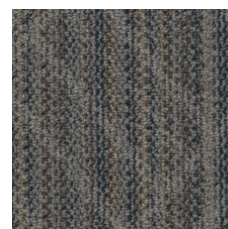
Together Color 50210



Link Color 50375



Unify Color 50485



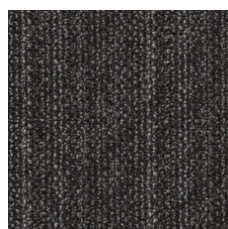
Combine 50486



Unify 50500



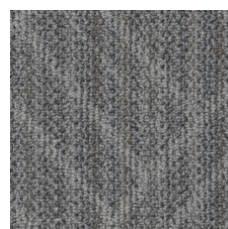
Connect 50505



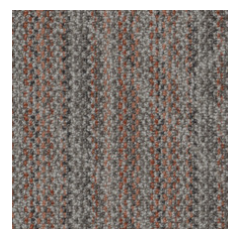
Embrace 50506



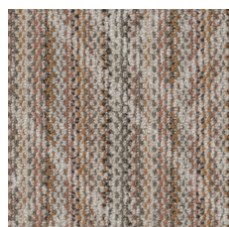
Merge 50518



Link 50580



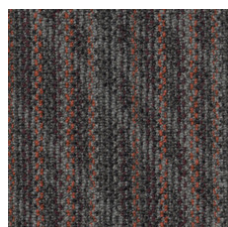
Merge Color 50675



Include Color 50678



Join 50761



Join Color 50865

Additional Information

* To learn more about the recyclability of our products and our re[TURN], please visit shawcontract.com/sustainability.

**Meets or exceeds all local and national regulations in country of manufacture.

***This carpet is manufactured to be ADA compliant, but to be fully ADA compliant, the end-user must ensure the carpet is adhered to the floor and installed as outlined in the ADA standards.

[Installation Guidelines](#)

[Maintenance Guidelines](#)

Specifications are subject to nominal manufacturing variance. Material supply and/or manufacturing processes may necessitate changes without notice.

This product is an exclusive design and may not be duplicated in any manner. Use of this design in the creation of another product design is also strictly prohibited.

Visit shawcontract.com/testing for more information.



Corporate Headquarters +1 800 257 7429 | +1 706 532 7984 | Atlanta +1 404 853 7429 | Bengaluru +91 80 6773 0202 | Beijing +86 10 6568 588 | Chicago +1 312 467 1331 | Dubai +971 4 584 6956 | Hong Kong +852 2623 0371 | Latin America (Miami) +1 305 827 5912 | London +44 207 961 4120 | Los Angeles +1 800 233 1614 | Melbourne +61 3 9939 8543 | Mexico City +55 5010 7600 | Mumbai +91 22 6284 5050 | Nantong +86 400 800 7429 | New York +1 212 953 7429 | Paris +33 (0) 1 81 22 44 39 | San Francisco +1 415 955 1920 | Santiago +562 2431 5000 x 550 | São Paulo +55 11 3071 1702 | Shanghai +86 21 3338 4000 | Singapore +65 6733 1811 | Sydney +61 800 556 302

© 2024 Shaw Industries Group, Inc., a Berkshire Hathaway Company
November 21, 2024

3 of 3