

## In Tune Tile

製品型	<b>Carpet Tile</b>	
コレクション	<b>Collective</b>	
スタイルナンバー	<b>5T496</b>	
建設	<b>マルチレベルパターンループ</b>	
染色法	<b>100% 原液着色</b>	
一次バックイング	<b>合成</b>	
二次バックイング	<b>Ecoworx®タイル</b>	
保護治療	<b>SSP@shaw 土壌保護保証</b>	
	u.s.	metric
商品のサイズ	<b>9 in x 36 in</b>	<b>23 cm x 91 cm</b>
ボックスあたりの面積	<b>45 ft<sup>2</sup></b>	<b>4.18 m<sup>2</sup></b>
ボックスあたりの個数	<b>20 pcs</b>	
ゲージ	<b>1/12 in</b>	<b>47.2 per 10 cm</b>
ステッチ	<b>8.5 per in</b>	<b>34.5 per 10 cm</b>
完成した杭の厚さ	<b>0.100 in</b>	<b>2.54 mm</b>
平均密度	<b>6120 oz/yd<sup>3</sup></b>	<b>0.226 g/cm<sup>3</sup></b>
キロテックス		<b>9.69</b>
総厚	<b>0.242 in</b>	<b>6.15 mm</b>
房状の重量	<b>17 oz/yd<sup>2</sup></b>	<b>576.4 g/m<sup>2</sup></b>



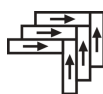
## 推奨インストール方法



Ashlar



Brick



Herringbone



Monolithic



Stagger

## データ + テスト

放射パネル (astm E648)

Class I

Nbs煙

Less Than 450

静電気の傾向

Less Than 3.5 kv

Cri Green Label Plus (glp)

USA GLP9968 | China GLP1263

錠剤テスト

Pass\*

Adaコンプライアンス

&gt;0.6、ADA 歩行面およびアクセス可能ルート用推奨静摩擦係数の基準に合致\*\*\*

Test Reports may be included or listed by the manufacturing/inventory style number as opposed to the noted selling style number.

## 保証

生涯商用限定保証

コーディネート商品

Carpet Tile: **Collective I Tile, Collective II Tile, Collective III Tile, Hand In Hand Tile, In Common Tile, Side By Side Tile, All Together Tile, Alongside Tile**

属性+認定

Certifications Below Apply Exclusively To The Carpet Tile Rug Itself And Not The Lokworx Tabs Adhesive

Health & Wellbeing

Material Ingredient Transparency	<b>Cradle to Cradle Certified®   Silver Level (Version 4.0)</b> <b>Health Product Declaration (HPD)   1,000 ppm 開示</b> <b>Living Building Challenge (LBC)   レッドリスト記載化学物質無配合</b> <b>Declare   LBC 準拠</b> <b>Declare   LBC 準拠</b> <b>NSF 140   ゴールド</b> <b>CRI Green Label Plus (GLP)   GLP9968</b>
Indoor Air Quality	

Climate Impact

Environmental Product Declaration (EPD)	<b>ISO14044、ISO14025 および EN15804 に基づく 第三者認証取得</b>
Embodied Carbon (Cradle to Gate)	<b>3.69 kg CO<sub>2</sub>/m<sup>2</sup></b>
Life-Cycle Carbon Emissions	<b>Carbon Neutral</b>
Total Recycled Content	<b>56% (Pre-Consumer 56%   Post-Consumer 0%)</b>
Product Packaging	<b>100% リサイクル可能</b>

Global Product Assessment

	<b>Singapore Green Label   認証取得</b> <b>CE Marking (EN 14041)   第三者認証取得</b> <b>Environmental Guarantee*   Re[turn] Reclamation Program*   Through Our Environmental Guarantee, Shaw Pledges to Transport And Recycle Any Ecoworx Carpet.</b> <b>Country of Origin**   USA &amp; China</b>
--	---

Well V2 Contribution Credit

X08 Hazardous Material Reduction Part 1: Limit Hazardous Materials Optimization – 1 pt	<b>C2C Silver Level (Version 4.0)</b>
X10 Volatile Compound Reduction Part 1 (A): Manage Volatile Organic Compounds (VOCs) Optimization – 1 pt	<b>C2C Silver Level (Version 4.0)</b>
X11 Long Term Emissions Control Part 2: Flooring Optimization – 1 pt	<b>Green Label Plus Certification: GLP9968</b>
X13 Enhanced Material Precaution Part 1: Select Optimized Materials Optimization – max 2 pts	<b>C2C Silver Level (Version 4.0)</b>
X14 Material Transparency Part 1: Promote Ingredient Disclosure Optimization – max 2 pts	<b>C2C Silver Level (Version 4.0)</b>

## グリーンリード貢献クレジット

MRクレジット：製品の開示と最適化の構築  
環境製品宣言-オプション1：環境製品宣言 (EPD)

MRクレジット：製品の開示と最適化の構築  
材料成分-オプション1：材料成分レポート

MRクレジット：製品の開示と最適化の構築  
材料成分-オプション2：材料成分の最適化

MRクレジット：製品の開示と最適化の構築  
原材料の調達-オプション2：リーダーシップの抽出実践

EQクレジット：低排出材料  
オプション1：製品カテゴリの計算

MR Credit: Interiors Life-Cycle Impact Reduction  
Option 3: Design for Flexibility

## Available Colorways



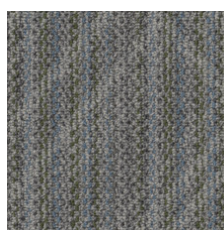
Include 50100



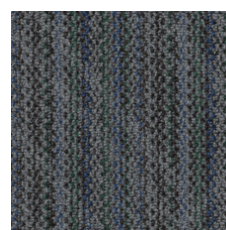
Together 50105



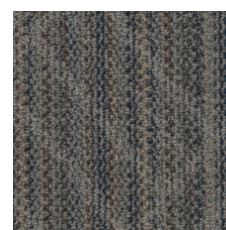
Together Color 50210



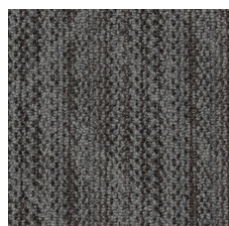
Link Color 50375



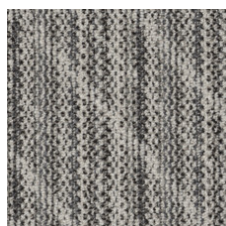
Unify Color 50485



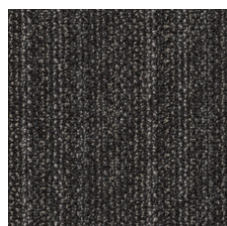
Combine 50486



Unify 50500



Connect 50505



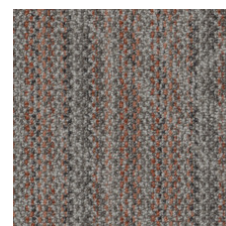
Embrace 50506



Merge 50518



Link 50580



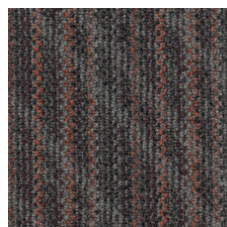
Merge Color 50675



Include Color 50678



Join 50761



Join Color 50865

## 追加情報

\* To learn more about the recyclability of our products and our re[TURN], please visit [shawcontract.com/sustainability](https://shawcontract.com/sustainability).

\*\*Meets or exceeds all local and national regulations in country of manufacture.

\*\*\*This carpet is manufactured to be ADA compliant, but to be fully ADA compliant, the end-user must ensure the carpet is adhered to the floor and installed as outlined in the ADA standards.

[Installation Guidelines](#)

[Maintenance Guidelines](#)

Specifications are subject to nominal manufacturing variance. Material supply and/or manufacturing processes may necessitate changes without notice.

This product is an exclusive design and may not be duplicated in any manner. Use of this design in the creation of another product design is also strictly prohibited.

Visit [shawcontract.com/testing](https://shawcontract.com/testing) for more information.

Corporate Headquarters +1 800 257 7429 | +1 706 532 7984 | Atlanta +1 404 853 7429 | Bengaluru +91 80 6773 0202 | Beijing +86 10 6568 588 | Chicago +1 312 467 1331 | Dubai +971 4 584 6956 | Hong Kong +852 2623 0371 | London +44 207 961 4120 | Los Angeles +1 800 233 1614 | Melbourne +61 3 9939 8543 | Mexico City +55 5010 7600 | Mumbai +91 22 6284 5050 | Nantong +86 400 800 7429 | New York +1 212 953 7429 | Paris +33 (0) 1 81 22 44 39 | San Francisco +1 415 955 1920 | Shanghai +86 21 3338 4000 | Singapore +65 6733 1811 | Sydney +61 800 556 302

© 2025 Shaw Industries Group, Inc., a Berkshire Hathaway Company  
July 2, 2025

3 of 4

