

Kickoff Tile

| | |
|------------------------|--|
| Nom De Style | Carreaux De Tapis |
| Collection | Teamwork |
| Numéro De Style | 5T499 |
| Construction | Boucle De Motif à Plusieurs Niveaux |
| Fibre | Ecosolution Q100™ Nylon |
| Méthode De Teinture | 100% Teint EN Solution |
| Endos Primaire | Synthétique |
| Endos Secondaire | Ecworx® Tile |
| Traitements Protecteur | Protection Des Sols SSP® Shaw |

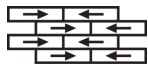
| | | |
|-----------------------|---------------------|-----------------------|
| | u.s. | metric |
| Dimensions Du Produit | 9 in x 36 in | 23 cm x 91 cm |
| Surface Par Carton | 45 ft² | 4.18 m² |
| Pièces Par Carton | 20 pcs | |
| Jauge | 1/12 in | 47.2 per 10 cm |
| Compte De Mailles | 9.5 per in | 38.5 per 10 cm |
| Épaisseur Fini | 0.113 in | 2.87 mm |
| Densité | 5735 oz/yd³ | 0.212 g/cm³ |
| Kilotex | | 10.98 |
| Poids De La Fibre | 0.247 in | 6.27 mm |
| Touffetée | | |
| Poids De La Fibre | 18 oz/yd² | 610.3 g/m² |
| Touffetée | | |



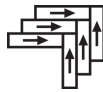
Méthodes d'Installation Conseillées



Ashlar



Brick



Herringbone



Monolithic



Stagger

Spécifications Du Rendement + Tests Et Essai

| | |
|--------------------------------------|--|
| Essai Au Panneau Radiant (Astm E648) | Class I |
| Densité Du Fumée | Less Than 450 |
| Statique | Less Than 3.5 kv |
| Label Cri Green Label Plus (Glp) | USA GLP9968 China GLP1263 |
| Inflammabilité | Pass* |
| Ada Conformité | ≥0.6, conforme au coefficient de frottement statique pour les surfaces de passage et d'accessibilité simplifiée (ADA).*** |

Test Reports may be included or listed by the manufacturing/inventory style number as opposed to the noted selling style number.

Garanties

Commerciale Limitée

Coordination Des Produits

Carpet Tile: **Collaboration Tile, Huddle Tile, Follow-Up Tile**

Attributs + Certifications

Certifications Below Apply Exclusively To The Carpet Tile Rug Itself And Not The Lokworx Tabs Adhesive

Health & Wellbeing

Material Ingredient Transparency

Cradle to Cradle Certified® | Silver Level (Version 4.0)
Health Product Declaration (HPD) | Divulgarion De 1 000 ppm
Living Building Challenge (LBC) | Exempt De Produits Chimiques De La
Liste Rouge
Declare | Conforme LBC
Declare | Conforme LBC
NSF 140 | or
CRI Green Label Plus (GLP) | GLP9968

Indoor Air Quality

Climate Impact

Environmental Product Declaration (EPD)

Certifié Par Une Tierce Partie Conformément Aux Normes ISO 14044,
ISO 14025 Et EN 15804
3.71 kg CO₂/m²
Low Embodied Carbon
57% (Pre-Consumer 57% | Post-Consumer 0%)
100% Recyclable

Embodied Carbon (Cradle to Gate)

Life-Cycle Carbon Emissions

Total Recycled Content

Product Packaging

Global Product Assessment

Singapore Green Label | Agréé
CE Marking (EN 14041) | Certifié Par Un Tiers
Environmental Guarantee* | Re[turn] Reclamation Program* | Through
Our Environmental Guarantee, Shaw Pledges to Transport And
Recycle Any Ecoworx Carpet.
Country of Origin | USA & China**

Well V2 Contribution Credit

X08 Réduction des matières dangereuses Partie 1 : Optimisation des limites des matières dangereuses – 1 pt **C2C Silver Level (Version 4.0)**

X10 Réduction des composés volatils Partie 1 (A) : Gérer l'optimisation des composés organiques volatils (COV) - 1 pt **C2C Silver Level (Version 4.0)**

X11 Contrôle des émissions à long terme Partie 2 : Optimisation des revêtements de sol – 1 pt **Green Label Plus Certification: GLP9968**

X13 Enhanced Material Precaution Part 1: Select Optimized Materials Optimization - max 2 pts **C2C Silver Level (Version 4.0)**

X14 Transparence des matériaux Partie 1 : Promouvoir l'optimisation de la divulgation des ingrédients - max 2 pts **C2C Silver Level (Version 4.0)**

Contribution Au Certificat Vert Leed

- « Crédit MR : Divulcation et optimisation des produits de construction
- « Crédit MR : Divulcation et optimisation des produits de construction
- « Crédit MR : Divulcation et optimisation des produits de construction
- « Crédit MR : Divulcation et optimisation des produits de construction

Crédit EQ : matériaux faibles émissions

MR Credit: Interiors Life-Cycle Impact Reduction
Option 3: Design for Flexibility

Available Colorways



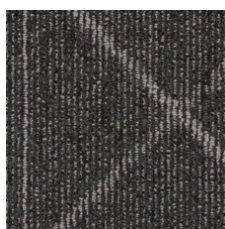
Impact 97100
LRV 23 | L* 57.99



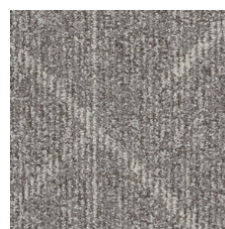
High Impact 97111
LRV 19.6 | L* 51.39



Contribute 97500
LRV 4.4 | L* 24.81



Innovate 97505
LRV 6.6 | L* 30.85



Progress 97515
LRV 24.5 | L* 56.63



Steady Progress 97518
LRV 18.1 | L* 49.64



Influence 97535
LRV 18.2 | L* 49.69



Influence Others 97555
LRV 12.1 | L* 41.36

**3rd Party Certified in Accordance with ISO14044, ISO14025 & EN15804
C2C Silver Level (Version 4.0) or HPD (Version 2.1)**

C2C Silver Level (Version 4.0)

Environmental Guarantee: Re[turn] Reclamation Program* | Through Our Environmental Guarantee, Shaw Pledges to Transport And Recycle Any Ecoworx® Carpet.

Green Label Plus Certification: GLP9968

Ecoworx® Tile with Lokdots Installation System

Informations Supplémentaires

* To learn more about the recyclability of our products and our re[TURN], please visit shawcontract.com/sustainability.

**Meets or exceeds all local and national regulations in country of manufacture.

***This carpet is manufactured to be ADA compliant, but to be fully ADA compliant, the end-user must ensure the carpet is adhered to the floor and installed as outlined in the ADA standards.

[Installation Guidelines](#)

[Maintenance Guidelines](#)

Specifications are subject to nominal manufacturing variance. Material supply and/or manufacturing processes may necessitate changes without notice.

This product is an exclusive design and may not be duplicated in any manner. Use of this design in the creation of another product design is also strictly prohibited.

Visit shawcontract.com/testing for more information.



Declare.



PVC-Free

Corporate Headquarters +1 800 257 7429 | +1 706 532 7984 | Atlanta +1 404 853 7429 | Bengaluru +91 80 6773 0202 | Beijing +86 10 6568 588 | Chicago +1 312 467 1331 | Dubai +971 4 584 6956 | Hong Kong +852 2623 0371 | London +44 207 961 4120 | Los Angeles +1 800 233 1614 | Melbourne +61 3 9939 8543 | Mexico City +55 5010 7600 | Mumbai +91 22 6284 5050 | Nantong +86 400 800 7429 | New York +1 212 953 7429 | Paris +33 (0) 1 81 22 44 39 | San Francisco +1 415 955 1920 | Shanghai +86 21 3338 4000 | Singapore +65 6733 1811 | Sydney +61 800 556 302

© 2025 Shaw Industries Group, Inc., a Berkshire Hathaway Company
July 29, 2025

3 of 3