

For reference purposes only if printed or downloaded.

Coordinating Products

Carpet Tile: **Stonework Tile, Grit Tile, Zest Tile, Zeal Tile, Spark Tile**  
Broadloom: **Verve, Colca, Kista By Lindsay Stead, Stone, Flame, Shale, Diamonds**

Diversity & Inclusion

We promote supplier participation that is reflective of Shaw Industries' diverse customer base and local community. We believe having a strong Supplier Diversity Program is strategic for bringing more innovation to our businesses and opening new markets for growth.

Material Health & Environmental Certifications

Certifications below apply exclusively to the carpet tile rug itself and not the LokWorx Tabs adhesive

Health & Wellbeing

Material Ingredient Transparency

**Cradle to Cradle Certified® | Silver Level (Version 4.0)**  
**Health Product Declaration (HPD) | 1,000 ppm Disclosure**  
**Living Building Challenge (LBC) | Free of Red List Chemicals**  
**Declare | LBC Compliant**  
**Declare | LBC Compliant**  
**NSF 140 | Gold**  
**CRI Green Label Plus (GLP) | GLP9968**

Indoor Air Quality

Climate Impact

Environmental Product Declaration (EPD)  
Embodied Carbon (Cradle to Gate)  
Life-Cycle Carbon Emissions  
Total Recycled Content  
Product Packaging

**3rd Party Certified in Accordance with ISO14044, ISO14025 & EN15804**  
**3.89 kg CO<sub>2</sub>/m<sup>2</sup>**  
**Carbon Neutral**  
**60% (Pre-Consumer 60% | Post-Consumer 0%)**  
**100% Recyclable**

Global Product Assessment

**Singapore Green Label | Certified**  
**CE Marking (EN 14041) | 3rd Party Certified**  
**Environmental Guarantee\* | Re[turn] Reclamation Program\* | Through Our Environmental Guarantee, Shaw Pledges to Transport And Recycle Any Ecoworx Carpet.**  
**Country of Origin\*\* | USA & China**

WELL V2 Contribution Credit

X08 Hazardous Material Reduction  
Part 1: Limit Hazardous Materials Optimization  
X10 Volatile Compound Reduction  
Part 1 (A): Manage Volatile Organic Compounds (VOCs) Optimization  
X11 Long Term Emissions Control  
Part 2: Flooring Optimization  
X13 Enhanced Material Precaution  
Part 1: Select Optimized Materials Optimization  
X14 Material Transparency  
Part 1: Promote Ingredient Disclosure Optimization

**C2C Silver Level (Version 4.0)**  
**C2C Silver Level (Version 4.0)**  
**Green Label Plus Certification: GLP9968**  
**C2C Silver Level (Version 4.0)**  
**C2C Silver Level (Version 4.0)**

## Leed v4 Contribution Credits

MR Credit: Building Product Disclosure and Optimization  
Environmental Product Declarations - Option 1: Environmental Product Declaration (EPD)

MR Credit: Building Product Disclosure and Optimization  
Material Ingredients - Option 1: Material Ingredient Reporting

MR Credit: Building Product Disclosure and Optimization  
Material Ingredients - Option 2: Material Ingredient Optimization

MR Credit: Building Product Disclosure and Optimization  
Sourcing of Raw Materials - Option 2: Leadership Extraction Practices

EQ Credit: Low Emitting Materials  
Option 1: Product Category Calculations

MR Credit: Interiors Life-Cycle Impact Reduction  
Option 3: Design for Flexibility

**3rd Party Certified in Accordance with ISO 14044, ISO 14025 & EN15804**

**C2C Silver Level (Version 4.0) or HPD (Version 2.1)**

**C2C Silver Level (Version 4.0)**

**Environmental Guarantee: Re[turn] Reclamation Program\* | Through Our Environmental Guarantee, Shaw Pledges to Transport And Recycle Any Ecoworx Carpet.**

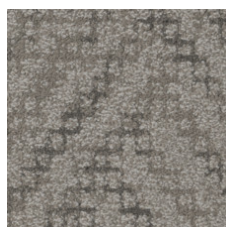
**Green Label Plus Certification: GLP9968**

**Ecoworx Tile with Lokdots Installation System**

## Available Colorways



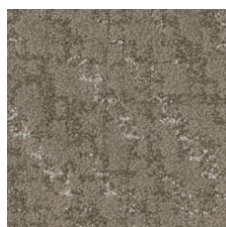
Marble 84100  
LRV 44.1 | L\* 72.31



Granite 84105  
LRV 21.6 | L\* 53.56



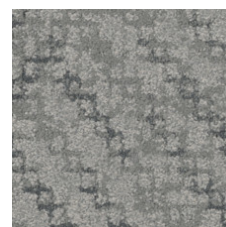
Pebble 84111  
LRV 33 | L\* 64.16



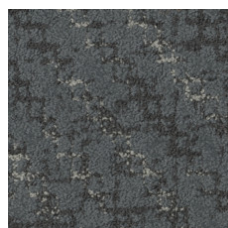
Clay 84506  
LRV 17.2 | L\* 48.5



Slate 84518  
LRV 13.6 | L\* 43.68



Mineral 84535  
LRV 23.5 | L\* 55.57



Graphite 84580  
LRV 9.3 | L\* 36.6



Flint 84761  
LRV 7.6 | L\* 33.17

## Additional Information

\* To learn more about the recyclability of our products and our re[TURN], please visit [shawcontract.com/sustainability](https://shawcontract.com/sustainability).

\*\*Meets or exceeds all local and national regulations in country of manufacture.

\*\*\*This carpet is manufactured to be ADA compliant, but to be fully ADA compliant, the end-user must ensure the carpet is adhered to the floor and installed as outlined in the ADA standards.

[Installation Guidelines](#)

[Maintenance Guidelines](#)

Specifications are subject to nominal manufacturing variance. Material supply and/or manufacturing processes may necessitate changes without notice.

This product is an exclusive design and may not be duplicated in any manner. Use of this design in the creation of another product design is also strictly prohibited.

Visit [shawcontract.com/testing](https://shawcontract.com/testing) for more information.

